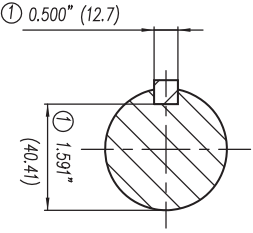
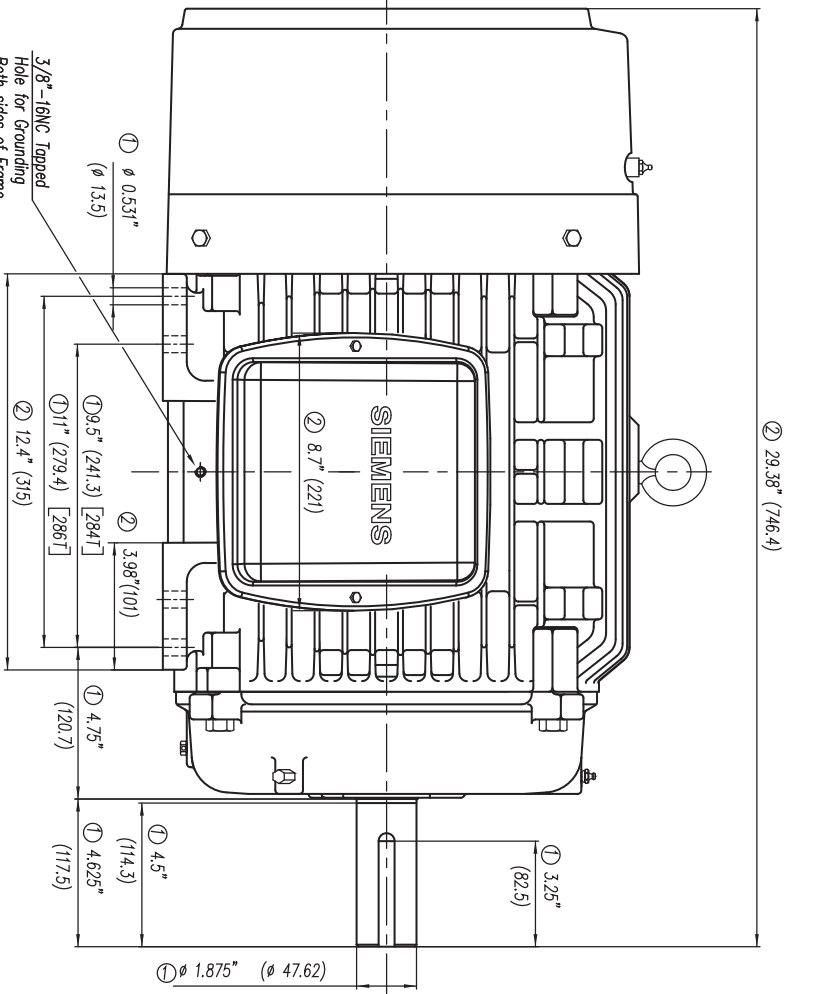


- ① Tolerances According to NEMA Std.
- ② All these dimensions corresponding to assemblies and castings shall have a tolerance as per DIN standard 1686-GTB-19.
- ③ Not According to NEMA Std.

- ① Tolerancias acorde a NEMA Std.
- ② Todos estos dimensiones correspondientes a ensambles y fundición en bruto tendrán una tolerancia según DIN 1686-GTB-19.
- ③ No Acorde a NEMA Std.

CERTIFIED PRINT / CERTIFICACION			
CUSTOMER/CLIENT			
PARTICULAR COMPANY		SUBORDINATED CENTER	
IP	SPM	FRAME/CLASS	TYPE/PRO
		WATTS	PHASES
			Hz



Keyseat detail
Detalle Cuiñero

Tol. in mm, acc. to/Tol. en mm. según DIN-1686-GTB-19		European Projection/Proyeccion Europea	
Over/desde To/hasta		Modific.	
18	± 4.5		
30	± 4.7		
50	± 5		
80	± 5.5		
120	± 6		
180	± 6.5		
250	± 7		
315	± 7.5		
400	± 8		
500	± 8.5		
630	± 9.5		
800	± 10		

Dim. in inches/Dim. en pulg.	Date/Fecha	Name/Nombre
	08/04/10	A. Perez
Draw/Elab.	08/04/10	A. Perez
Check/Rev.	08/04/10	A. Reol
Std.Cdd./Aut		

SIEMENS
GUADALAJARA FACTORY

Outline/Dimensiones
Long Shaft/ Espiga Larga
Type/ GP100 mNP FRAME/ARM. 284/286T 2..8. Pol. Tipo: 284/286T 2..8. Pol.

3MSE 710 1410

Ref. 3MSE 710 1155 Rep. /