

Data sheet for SIMOTICS S-1FK7



Figure similar

MLFB-Ordering data

1FK7015-5AK74-1SH3

Client order no. :

Order no. :

Offer no. :

Remarks :

Item no. :

Consignment no. :

Project :

Engineering data		Mechanical data			
Rated speed (100 K)	6000 rpm	Motor type	Permanent-magnet synchronous motor		
Number of poles	8	Motor type	Compact		
Rated torque (100 K)	0.2 Nm	Shaft height	20		
Rated current	1.0 A	Cooling	Natural cooling		
Static torque (60 K)	0.29 Nm	Radial runout tolerance	0.000 mm		
Static torque (100 K)	0.3 Nm	Concentricity tolerance	0.00 mm		
Stall current (60 K)	1.20 A	Axial runout tolerance	0.00 mm		
Stall current (100 K)	1.50 A	Vibration severity grade	Grade A		
Moment of inertia	0.102 kgcm ²	Connector size	0.5		
Efficiency	68.0 %	Degree of protection	IP54		
Physical constants		Design acc. to Code I	IM B5 (IM V1, IM V3)		
		Torque constant	0.24 Nm/A	Temperature monitoring	Pt1000 temperature sensor
		Voltage constant at 20° C	16.0 V/1000*min ⁻¹	Electrical connectors	Connectors for signals and power rotatable
		Winding resistance at 20° C	4.30 Ω	Color of the housing	Standard (Anthracite RAL 7016)
		Rotating field inductance	8.4 mH	Holding brake	with holding brake
		Electrical time constant	2.00 ms	Shaft extension	Plain shaft
		Mechanical time constant	1.90 ms	Encoder system	Multi-pole resolver (number of pole pairs corresponds to number of pole pairs of the motor)
		Thermal time constant	16 min		
		Shaft torsional stiffness	1300 Nm/rad		
		Net weight of the motor	1.2 kg		

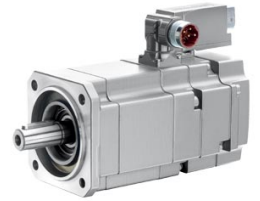


Figure similar

MLFB-Ordering data

1FK7015-5AK74-1SH3

Optimum operating point

Optimum speed	5000 rpm
Optimum power	0.1 kW

Limiting data

Max. permissible speed (mech.)	8000 rpm
Max. permissible speed (inverter)	8000 rpm
Maximum torque	1.0 Nm
Maximum current	4.2 A

Holding brake

Holding brake version	Permanent-magnet brake
Holding torque	0.4 Nm
Power supply voltage	DC 24 V \pm 10 %
Coil current	0.3 A
Opening time	30 ms
Closing time	20 ms
Highest braking work	2 J

Recommended Motor Module

Rated inverter current	3 A
Maximum inverter current	6 A
Maximum torque	1.00 Nm