



## Spectra Series™ Power Panelboards

Type APN and APNB Panelboard Interiors into  
Type APB Panelboard Enclosures

### Installation



**WARNING:** Danger of electrical shock or injury. Turn OFF power ahead of the panelboard or switchboard before working inside the equipment or removing any component. Equipment is to be installed and maintained by properly trained and qualified personnel only.

These instructions describe the installation of Type APN and APNB panelboard interiors into Type APB panelboard enclosures. Figure 1 shows a typical panel with four-piece trim. Figure 2 shows a typical panel with a dead front and the door removed.

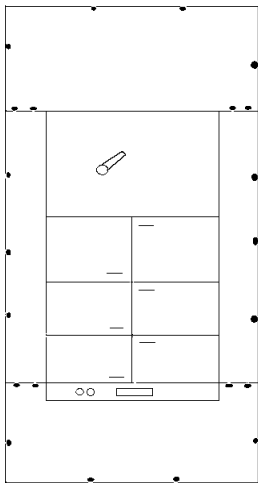


Figure 1. Typical panel with four-piece trim.

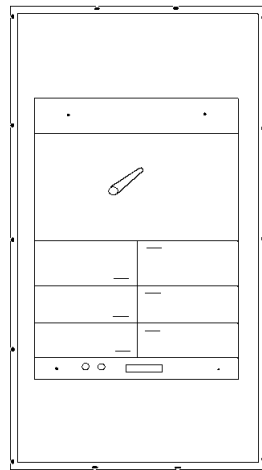


Figure 2. Typical panel with a dead front.

1. For ease of installation, it is necessary to remove the filler plates and, if provided, the deadfront assembly. When removing the deadfront, remove only the side rails and line-end filler plate, leaving the mounting posts and load-end filler attached, as shown in Figure 3. Follow the instructions for removal provided with each device, and set aside.

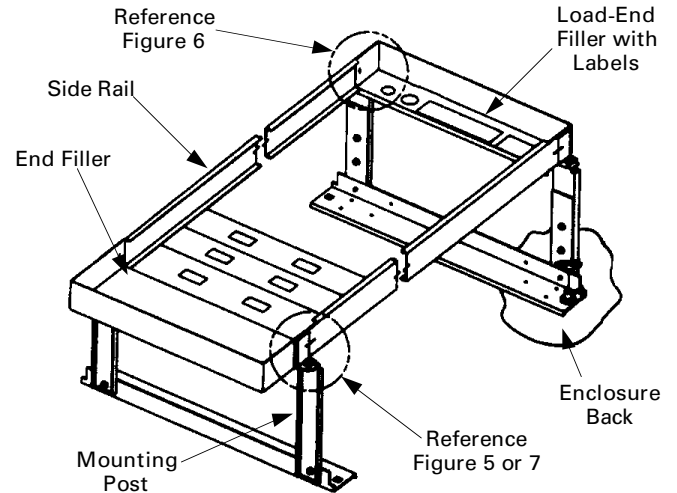


Figure 3. Deadfront assembly removed.

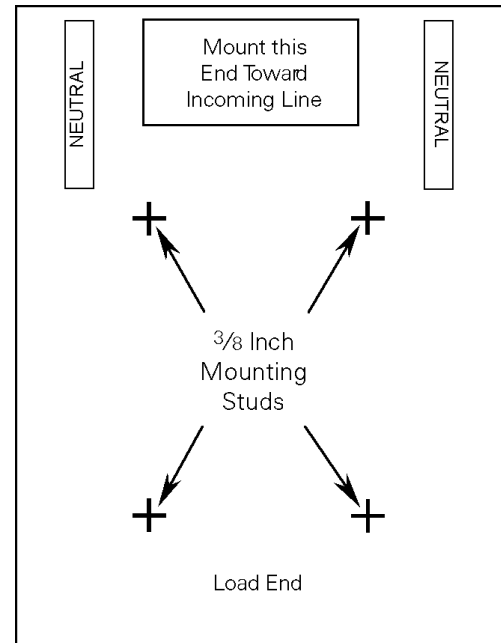


Figure 4. Panelboard mounting studs.

**NOTE:** For panels not assembled at the factory, but that require a deadfront, attach the mounting posts provided with the deadfront kit at this time, following the instructions provided with the kit.

2. Remove the four wing nuts and washers from the  $\frac{3}{8}$ " interior mounting studs on the back wall of the enclosure.
3. Locate the panel mounting studs that align with the panelboard interior mounting holes, as shown in Figure 4. The line end of the panel must be installed toward the line end of the box.
4. Place the interior on the studs, and replace the washer and wing nuts. Tighten the wing nuts.
5. Reinstall any filler plates removed earlier, starting at the lower end of the interior. For device installation, refer to the instructions furnished with the device. Once installation is complete, wiring may be brought to the main and branch devices. See the aluminum termination caution below.

## Panels with Full-Height Door Fronts

6. If a full-height door front is to be used on the panel, it is necessary to reinstall the deadfront once the wiring has been brought into the panel. (These instructions are also provided with the door front.)

**27- and 31-inch-wide panels.** To replace or install the deadfront, first install the top and bottom ends to the mounting post, as shown in Figure 5. Tighten the 1/4-20 hex-head screws to 50–60 in-lb.

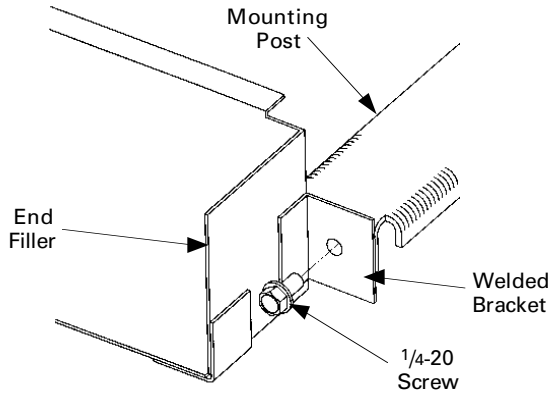


Figure 5. Installing the ends to the mounting post.

**27–44-inch-wide panels.** Fasten the end filler plates to the side plates with the 1/4-turn fasteners shown in Figure 6. The end filler plate with labeling attached must be placed at the load end of the panel, opposite to the incoming power.

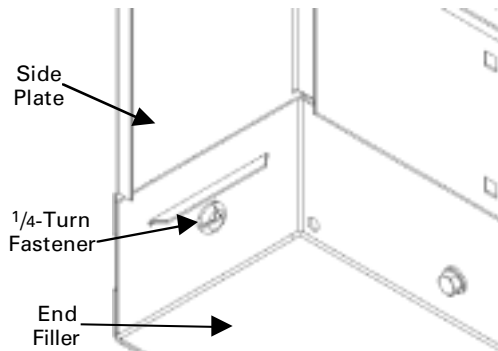


Figure 6. Fastening the end filler to the side plate.

**36–44-inch-wide panels.** Refasten the end fillers to the mounting posts, tightening the 1/4-20 screws to 50–60 in-lb, as shown in Figure 7. The end filler plate with labeling attached must be placed at the load end of the panel, opposite to the incoming power.

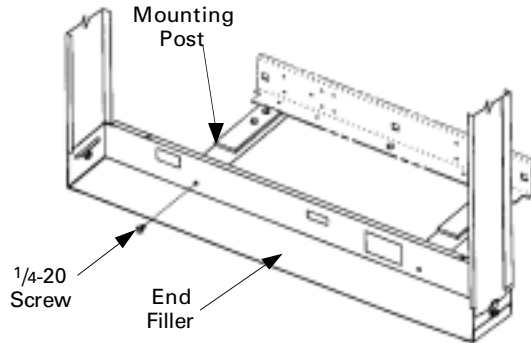


Figure 7. Fastening the end fillers to the mounting posts.

## After Installing the Interior

Do not discard the remaining contents of the bag that contained these instructions. The circuit identification tabs should be used, as applicable, at the time the circuit protective devices are installed. The NEMA instruction sheet provided should be retained for use by maintenance personnel.

If plug-in devices are used, the area above the device-mounting latches should be kept clear of any wires running through the side gutters. This facilitates the future removal of a device, if necessary.

## Attention – Procedure for Aluminum Terminations

1. Strip the insulation, being careful to not nick the wire.
2. Clean the wire strands with a wire brush.
3. Thoroughly coat the stripped conductor with a suitable antioxidant compound, such as ALNOX or PENETROX A13.
4. Insert the conductor and tighten the connector screw to the required torque, as indicated on the rating label.

These instructions do not cover all details or variations in equipment nor do they provide for every possible contingency that may be met in connection with installation, operation, or maintenance. Should further information be desired or should particular problems arise that are not covered sufficiently for the purchaser's purposes, the matter should be referred to the GE Company.



GE Industrial Systems

General Electric Company  
41 Woodford Ave., Plainville, CT 06062