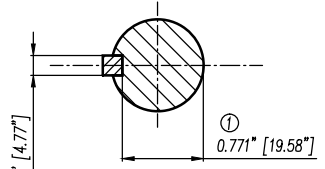


1/4"-20NC Tapped Hole for Grounding both sides of Frame.



Keyseat detail

- ① Tolerances According to NEMA Std.
- ② All these dimensions corresponding to assemblies and castings shall have a tolerance as per DIN standard 1686-GTB-19.

CERTIFIED PRINT									
CUSTOMER									
POM					SOW				
HP	BPM	FRAME	TYPE	VOLTS	PH	HZ			

FR00155

Tolerance in mm. according to DIN-1686-GTB-19	Quantity	Parts and Measure	Drawing No. Norm No.	Item No.	Material	Weight Lbs.
to 18	± 4.5					
Over 18 to 30	± 4.7					
Over 30 to 50	± 5					
Over 50 to 80	± 5.5					
Over 80 to 120	± 6					
Over 120 to 180	± 6.5					
Over 180 to 250	± 7					
Over 250 to 315	± 7.5					
Over 315 to 400	± 8					
Over 400 to 500	± 8.5					
Over 500 to 630	± 9.5					
Over 630 to 800	± 10					
Remark		European Projection		Modific		
		Dimensions in inches		Name		
		Date		R. Kaiser		
		Drawn		25/11/15		
		Checked				
		Std. Ckd				
		SIEMENS		Dimension Drawing NEMA		Scale
		GUADALAJARA FACTORY		Type: SD100 IEEE 143/145TC W/F FRAME		W/O
				3MSE 220 1596		2/2
				Ref. 3MSE 220 1596		Replace.