



Figure similar

MLFB-Ordering data

1FK7042-2AF71-1EA1

Client order no. :

Order no. :

Offer no. :

Remarks :

Item no. :

Consignment no. :

Project :

### Engineering data

Rated speed (100 K)	3000 rpm
Number of poles	8
Rated torque (100 K)	2.6 Nm
Rated current	2.0 A
Static torque (60 K)	2.50 Nm
Static torque (100 K)	3.0 Nm
Stall current (60 K)	1.80 A
Stall current (100 K)	2.20 A
Moment of inertia	2.900 kgcm <sup>2</sup>
Efficiency	89.0 %

### Physical constants

Torque constant	1.38 Nm/A
Voltage constant at 20° C	90.0 V/1000*min <sup>-1</sup>
Winding resistance at 20° C	4.67 Ω
Rotating field inductance	35.0 mH
Electrical time constant	7.50 ms
Mechanical time constant	2.15 ms
Thermal time constant	30 min
Shaft torsional stiffness	15500 Nm/rad
Net weight of the motor	4.6 kg

### Mechanical data

Motor type	Permanent-magnet synchronous motor
Motor type	Compact
Shaft height	48
Cooling	Natural cooling
Radial runout tolerance	0.040 mm
Concentricity tolerance	0.08 mm
Axial runout tolerance	0.08 mm
Vibration severity grade	Grade A
Connector size	1
Degree of protection	IP65
Design acc. to Code I	IM B5 (IM V1, IM V3)
Temperature monitoring	KTY84 temperature sensor in the stator winding
Electrical connectors	Connectors for signals and power rotatable
Color of the housing	Standard (Anthracite RAL 7016)
Holding brake	without holding brake
Shaft extension	Feather key
Encoder system	Encoder AM2048S/R: absolute encoder 2048 S/R, 4096 revolutions multi-turn, with EnDat interface

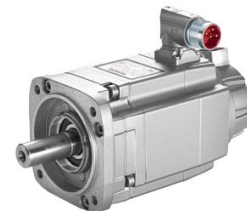


Figure similar

MLFB-Ordering data

1FK7042-2AF71-1EA1

Optimum operating point		Recommended Motor Module	
Optimum speed	3000 rpm	Rated inverter current	3 A
Optimum power	0.8 kW	Maximum inverter current	9 A
Limiting data		Maximum torque	10.50 Nm
Max. permissible speed (mech.)	9000 rpm		
Max. permissible speed (inverter)	6400 rpm		
Maximum torque	10.5 Nm		
Maximum current	7.6 A		