

## Catalog Numbers

Catalog No.	Amperage Rating	Max. Interrupting Rating
<b>1 PHASE, 3 WIRE, 120/240V AC MAX</b>		
WS1800CUNH	800	100,000
<b>3 PHASE, 4 WIRE, 240V AC MAX</b>		
WS3800CUNH	800	100,000

- FOR OVERHEAD OR UNDERGROUND SERVICE
- TYPE 3R OUTDOOR ENCLOSURE
- USE CLASS T (300V) FUSES ONLY

## Additional Modules, Accessories and Lug Kits

FOR USE WITH:	
Module Description	Siemens Series#
Main Breakers	(W)MC, WB, WEB, WXB, WBT
Switches	WMP, WMS, WS, WES
Tap/Terminal Boxes	WMTB, WTB, WET, WT_PU
Pull Boxes	WMMB
Meter Module	(W)MM, WxMM, (W)MT, (W)ML, (W)MK, (W)MLZ(F)
Meter Combinations	WC, WCL, WCT
Extension Box	WMEX, WSP, WSPD
Bussed Elbow	BE, WELB

Siemens Accessories	Catalog Number
Hub Cover Plate	EC56933S
Type HD Hub 2"	EC56854
Type HD Hub 2-1/2"	EC56855
Type HD Hub 3"	EC56856
Type HD Hub 3-1/2"	EC56857
Type HD Hub 4"	EC56858

Connect Modules Using	Catalog Number / Torque
QuickConnect	QC1 (1ph) or QC4 (3ph) 400-440 lb-in (35-36 ft.-lb.) Torque

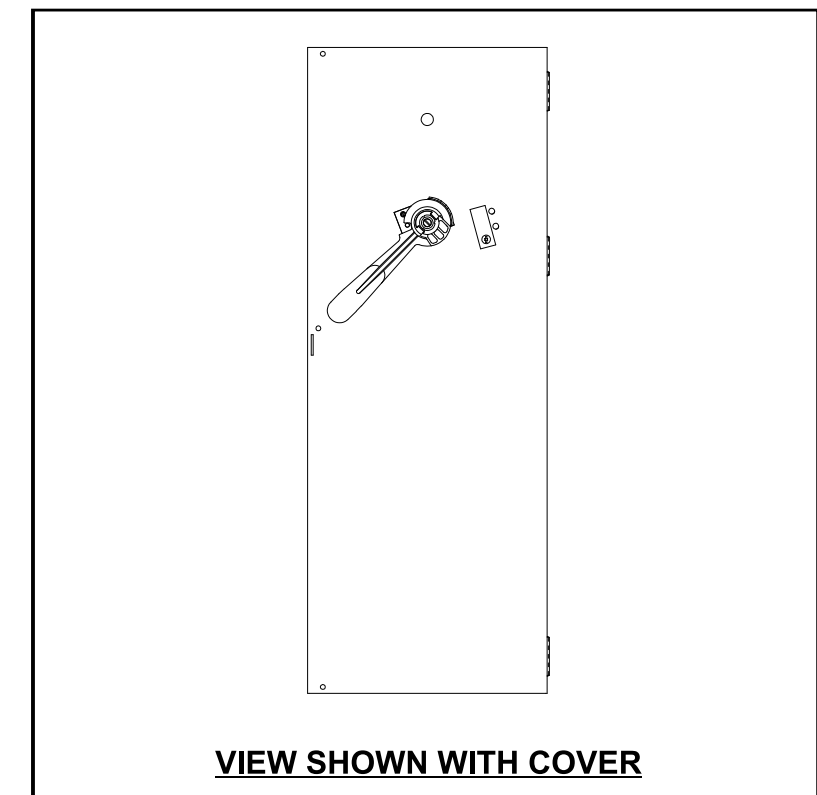
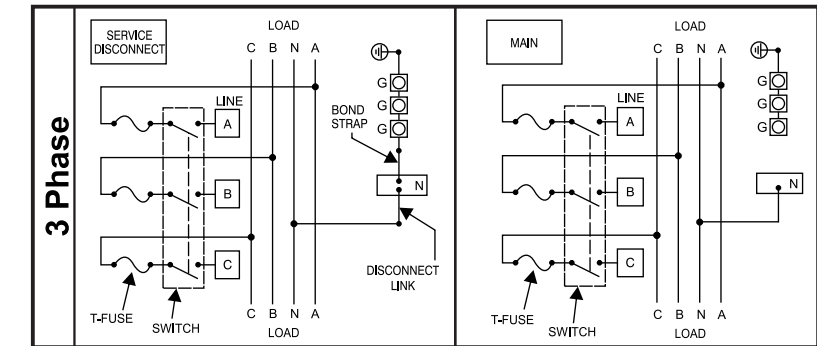
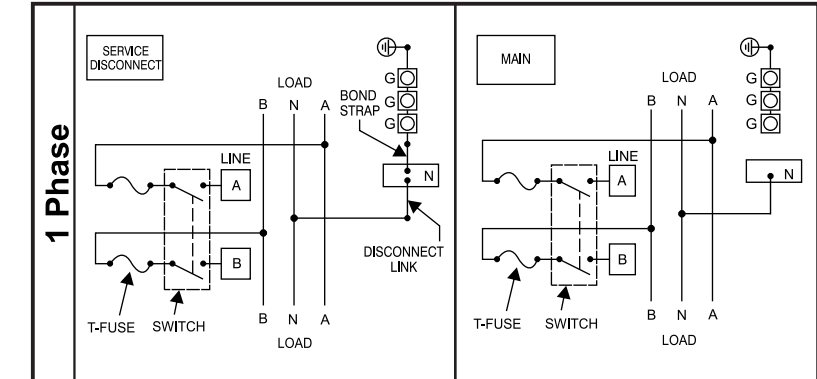
1 Phase: Lugs for Phase and Neutral Connections (not supplied)						
NEMA Lug <sup>①</sup>	MFG	Wire Range	Type	No. Wires per phase	Torque (lb.-in.)	
LK12750N2	Siemens	300-750 kcmil	Mechanical	2	500	
LK12600N2	Siemens	#2-600 kcmil	Mechanical	2	375	
LK13500N2	Siemens	1/0-500 kcmil	Mechanical	1	375	②
				2	500	②
2ACL-500	ILSCO	500 kcmil	Compression	3	NA	③
2ACL-600	ILSCO	600 kcmil	Compression	2	NA	③
2ACL-750	ILSCO	750 kcmil	Compression	2	NA	③

3 Phase: Lugs for Phase and Neutral Connections (not supplied)						
LK32750N2	Siemens	300-750 kcmil	Mechanical	2	500	
LK32600N2	Siemens	#2-600 kcmil	Mechanical	2	375	
LK33500N2	Siemens	1/0-500 kcmil	Mechanical	1	375	②
				2	500	②
2ACL-500	ILSCO	500 kcmil	Compression	3	NA	③
2ACL-600	ILSCO	600 kcmil	Compression	2	NA	③
2ACL-750	ILSCO	750 kcmil	Compression	2	NA	③

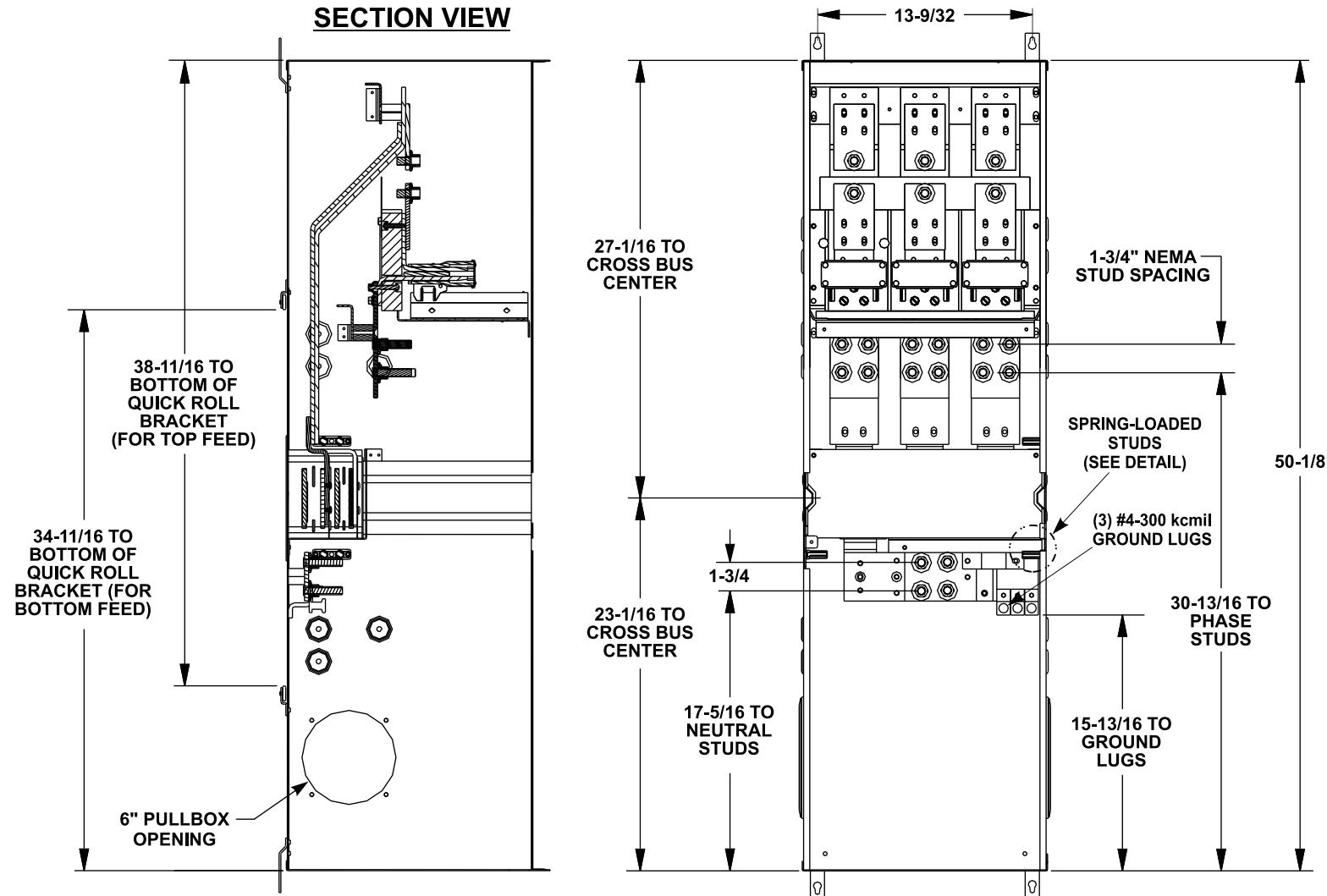
- ① Order one mechanical lug kit for main breaker and neutral conversions. Contact lug manufacturer for compression lug quantities supplied for each kit.
- ② Kit contains more than one lug type. Reference kit instruction sheet for the actual torque value for each lug type.
- ③ See lug manufacturer's instruction sheet supplied with the connector for tool, die, and number of crimps.

## Schematics

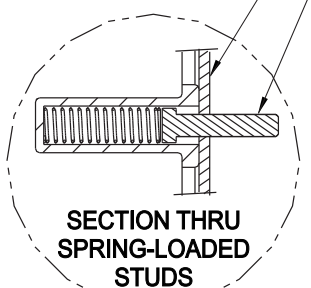


**WS3800CUNH (3 Phase) SHOWN**  
VIEWS SHOWN WITHOUT COVER  
SHOWN IN BOTTOM FEED POSITION

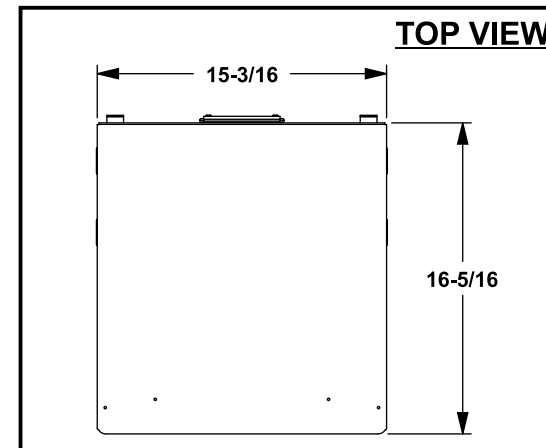
### SECTION VIEW



#10-32 x 7/8 SCREWS  
ENCLOSURE WALL



### TOP VIEW



© 2015 Copyright Siemens Industry, Inc.

**SIEMENS**  
Siemens Industry, Inc.

**PowerMod™ Switch Mains**

Description: **WS1800CUNH - WS3800CUNH, No Hub Openings, Service Entrance Switch Mains**

KAM 1/31/18 DO NOT SCALE DRAWING Dwg. No. **800A\_SE\_Switch\_MainsNH**