

Data sheet for SIMOTICS S-1FT7

MLFB-Ordering data

1FT7136-5AC71-1CG1

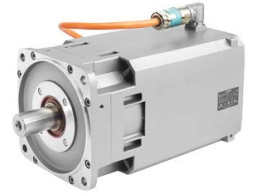


Figure similar

Client order no. :
Order no. :
Offer no. :
Remarks :

Item no. :
Consignment no. :
Project :

Engineering data		Mechanical data	
Rated speed	2000 rpm	Motor type	Permanent-magnet synchronous motor
Number of poles	8	Design of the motor type	Compact
Rated torque (100 K)	71.0 Nm	Shaft height	132 mm
Rated current	23.0 A	Cooling	Natural cooling
Static torque (60 K)	115.00 Nm	Radial runout tolerance	N
Static torque (100 K)	140.0 Nm	Vibration severity grade	Grade A
Stall current (60 K)	35.0 A	Degree of protection	IP65
Stall current (100 K)	43.0 A	Design acc. to Code I	IM B5 (compatible with 1FT6)
Rotor moment of inertia	0.0748000 kgm ²	Temperature monitoring	Pt1000 temperature sensor
Efficiency	94.0 %	Color of the housing	
Physical constants		Holding brake version	no value
Torque constant	3.27 Nm/A	Shaft end type	Plain shaft
Voltage constant at 20° C	215.0 V/1000*min ⁻¹	Sensor design	Encoder AM24DQI: Absolute encoder 24 bit (resolution 16777216, encoder-internal 2048 S/R) + 12 bit Multiturn (traversing range 4096 revolutions) - with signal connection RJ45
Winding resistance at 20° C	0.07 Ω	Electrical connectors	Transverse facing to right site
Rotating field inductance	2.8 mH	Connector size	3
Electrical time constant	39.00 ms		
Mechanical time constant	1.50 ms		
Thermal time constant	90 min		
Shaft torsional stiffness	210000 Nm/rad		
Net weight of the motor	109.0 kg		

Data sheet for SIMOTICS S-1FT7

MLFB-Ordering data

1FT7136-5AC71-1CG1

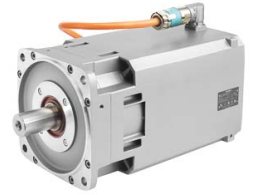


Figure similar

Optimum operating point		Recommended Motor Module	
Optimum speed	1840 rpm	Rated inverter current	45 A
Optimum power	15.2 kW	Maximum inverter current	85 A
Limiting data		Maximum torque	265.00 Nm
Max. permissible speed (mech.)	3600 rpm		
Max. permissible speed (inverter)	2650 rpm		
Maximum torque	490.0 Nm		
Maximum current	183.0 A		