

## Data sheet for SIMOTICS S-1FT7

MLFB-Ordering data

1FT7132-5AC71-1CG0

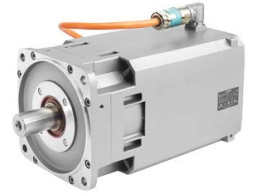


Figure similar

Client order no. :  
Order no. :  
Offer no. :  
Remarks :

Item no. :  
Consignment no. :  
Project :

Engineering data		Mechanical data	
Rated speed	2000 rpm	Motor type	Permanent-magnet synchronous motor
Number of poles	8	Design of the motor type	Compact
Rated torque (100 K)	55.0 Nm	Shaft height	132 mm
Rated current	18.7 A	Cooling	Natural cooling
Static torque (60 K)	75.00 Nm	Radial runout tolerance	N
Static torque (100 K)	90.0 Nm	Vibration severity grade	Grade A
Stall current (60 K)	24.5 A	Degree of protection	IP64
Stall current (100 K)	29.5 A	Design acc. to Code I	IM B5 (compatible with 1FT6)
Rotor moment of inertia	0.0459000 kgm <sup>2</sup>	Temperature monitoring	Pt1000 temperature sensor
Efficiency	94.0 %	Color of the housing	Standard (pearl dark gray similar to RAL 9023)
Physical constants		Holding brake version	no value
Torque constant	3.07 Nm/A	Shaft end type	Plain shaft
Voltage constant at 20° C	202.0 V/1000*min <sup>-1</sup>	Sensor design	Encoder AM24DQI: Absolute encoder 24 bit (resolution 16777216, encoder-internal 2048 S/R) + 12 bit Multiturn (traversing range 4096 revolutions) - with signal connection RJ45
Winding resistance at 20° C	0.14 Ω	Electrical connectors	Connector turnable
Rotating field inductance	4.3 mH	Connector size	1.5
Electrical time constant	32.00 ms		
Mechanical time constant	2.00 ms		
Thermal time constant	75 min		
Shaft torsional stiffness	231000 Nm/rad		
Net weight of the motor	76.0 kg		

## Data sheet for SIMOTICS S-1FT7

MLFB-Ordering data

1FT7132-5AC71-1CG0

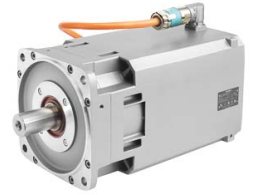


Figure similar

Optimum operating point		Recommended Motor Module	
Optimum speed	2000 rpm	Rated inverter current	30 A
Optimum power	11.5 kW	Maximum inverter current	90 A
Limiting data		Maximum torque	235.00 Nm
Max. permissible speed (mech.)	3600 rpm		
Max. permissible speed (inverter)	2850 rpm		
Maximum torque	290.0 Nm		
Maximum current	117.0 A		