

Figure similar

MLFB-Ordering data 1FG1501-6RC36-4FB2-Z
D21+G23+H04+K07+X60

Client order no. :
Order no. :
Offer no. :
Remarks :

Item no. :
Consignment no. :
Project :

Gearbox data

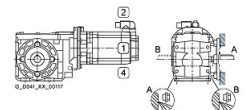
Gear box type	B29	Radial force maximum	4130 N
Gearbox basic type	Bevel geared	Max. permissible radial force with Mmax	4120 N
Gearbox size	29	Moment of inertia	0.04 kgcm ²
Transmission stages	2	Torsional stiffness	13 Nm/°
Transmission (ratio)	46.85	Efficiency	0.92
Gear number relation	1265/27	Mounting position	M1-B
Output moment maximum (short-time)	112 Nm	Mounting type	Flange version (A type)
max. input speed (briefly)	4500 rpm	Output shaft version	Hollow shaft standard II
Output speed short-time	96 rpm	Output shaft dimension	H25 mm
Emergency off output moment (1000 cycles)	187 Nm	Gearbox flange diameter	160 mm
		Output shaft bearing	No
		Figure 2 torque support	-

General tech. specifications

Degree of protection	IP65
Color of the housing	Blue gray RAL 7031
Specification	CE / UL / CSA / EAC / cRUus
Net weight	8.56 kg
1m-sound pressure level L _{pA} (ToI.+3dB(A))	65
Plug position	top (default) (2)
Connector size	1

Lubrication and sealing

Gear oil	Polyglycol oil CLP ISO PG VG220
Output shaft sealing	Seal longer service life
Oil charge	0.25 l



MLFB-Ordering data 1FG1501-6RC36-4FB2-Z
D21+G23+H04+K07+X60

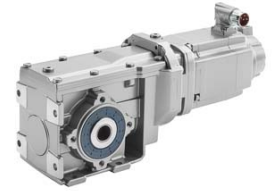


Figure similar

Motor data		Limiting data	
Motor type	Permanent-magnet synchronous motor	Maximum speed (short-time)	10000 rpm
Motor type	High Dynamic	Maximum torque	4.30 Nm
DC-link voltage, max.	510...720V	Motor current short term	7.6 A
Shaft height	36 mm	Optimum operating point	
Cooling	Natural cooling	Optimum speed	6000 rpm
Rated speed	6000 rpm	Optimum power	0.48 kW
Rated torque (100K)	0.77 Nm	Recommended Motor Module	
Rated power	0.49 kW	Rated inverter current	3.0 A
Rated current (100K)	1.43 A	Maximum inverter current	9.0 A
Static torque	1.13 Nm	Maximum torque	4.3 Nm
Static current	1.92 A		
Moment of inertia	0.25 kgcm ²		
Efficiency η	88 %		
Temperature monitoring	Pt1000 temperature sensor		
Encoder system	Encoder AM20DQI: absolute encoder 20 bits (resolution 1048576, encoder-internal 512 S/R) + 12 bits multi-turn (traversing range 4096 revolutions)		

Info servo geared motor

Outside the standard temperature range of -10 to +40 °C, further selectable options must be observed, in addition to the lubricant selection.

Further, you have to check the suitability of the components and options used for the requested temperature range.

MLFB-Ordering data 1FG1501-6RC36-4FB2-Z
D21+G23+H04+K07+X60

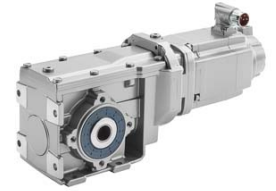


Figure similar

Options

D21	M1-B for bevel and worm gearboxes
G23	Seal longer service life
H04	Gearbox flange diameter 160mm
K07	Polyglycol oil CLP ISO PG VG220
X60	Paint finish: Blue gray RAL 7031

Standards

Compliance with standards CE / UL / CSA / EAC / cRUus

CE marking EN 60034