

Selection and Application Guide For use in Wisconsin

meter mounting EQUIPMENT



LANDIS & GYR



Contents

| Service | Rating | Positions | Terminals | Page |
|--|----------|-----------|-----------|--------|
| Introduction and General Information | - | - | - | 3-7 |
| Residential, 1 Phase, 3 Wire | 135A | 1 | 4 & 5 | 8 |
| Residential, 1 Phase, 3 Wire | 200A | 1 | 4 & 5 | 9 |
| Residential, 1 Phase, 3 Wire | 100/150A | 2-4 | 4 & 5 | 10 |
| Residential, 1 Phase, 3 Wire | 200A | 2-6 | 4 & 5 | 11 |
| Residential/Commercial, 1 Phase, 3 Wire | 200A | 1 | 4 | 12 |
| Residential/Commercial/Industrial, 1 Ph, 3W, 1&3 Ph, 3W, 3Ph, 4W | 200A | 1 | 4, 5 & 7 | 13 |
| Residential/Commercial, 1 Ph, 3 Wire, 1&3 Ph, 3 Wire, 3 Ph, 4 Wire | 320A | 1 | 4, 5 & 7 | 14 |
| Residential, 1 Phase, 3 Wire | 200A | 2-6 | 5 & 7 | 15 |
| Residential, Meter Mains, 1 Phase, 3 Wire | 100-200A | 1 | 4 & 5 | 16 |
| Residential, Pedestal, 1 Phase, 3 Wire | 100/200A | 1 | 4 or 5 | 17 |
| Residential/Commercial/Industrial, Pedestal, 3 Ph, 3 W, 3 Ph, 4 W | 200A | 1 | 4 or 5 | 18 |
| Residential/Commercial, 1 Phase, 3 Wire | 400A | 1 | 4 | 19 |
| Residential/Commercial/Industrial, Polyphase, 3 or 4 Wire | 400/480A | 1 | 7 | 20 |
| Air Conditioning Disconnects | - | - | - | 21 |
| Spa Panels | - | - | - | 22 |
| Lugs | - | - | - | 23, 24 |
| Socket Accessories | - | - | - | 25 |
| Repair Parts, Terms of Sale | - | - | - | 26 |
| Applications | - | - | - | 27 |

Represented by:

Lesco, Inc.
 5359 N. 118th Court
 Milwaukee, WI 53225

Phone:(414) 393-1428
 Fax: (414) 438-0741

LANDIS & GYR

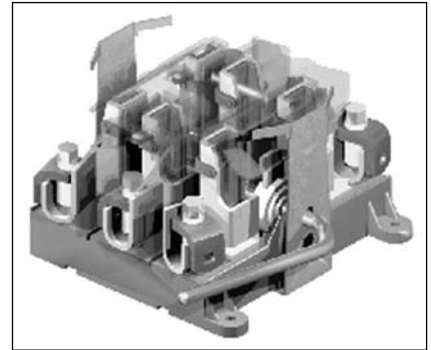


The Standard for Quality

For more than 50 years, Landis & Gyr has been manufacturing high quality meter mounting devices. From our proprietary K-Base to our heavy duty HQ lever bypass socket, Landis & Gyr is known throughout the industry for innovation and quality.

Landis & Gyr meter sockets are built for safety, ease of installation, and long term quality. That's why we use stainless steel hardware, polyester powder coat paint for long lasting protection, and Type G-90 galvanized steel or 3003 grade aluminum for all of our enclosures. It's also why we use an all-copper current path in our commercial sockets. All of this adds up to why utilities, OEM's, and contractors recognize Landis & Gyr across the country as the leader in design, quality, and workmanship. Quality is the reason many utilities and electricians specify Landis & Gyr.

Landis & Gyr- the standard for quality and design.



HQ-7 Block Assembly - The Standard for Quality

General Information

Materials:

16 gauge, galvanized steel, G-90
14 gauge, galvanized steel, G-90
14 gauge, aluminum
12 gauge, aluminum

Enclosures:

NEMA 3R

Finish:

Steel - Light gray, baked on powder polyester
Aluminum - Mill finish

Latches:

All swing latches are stainless steel

Block Material:

AS/AT, CQ, HQ, K-4 and K-7 - Glass reinforced polyester

Terminals:

AS/AT - Tin-plated aluminum extrusions 6061-T6
CQ, HQ, - Tin-plated copper

Standards:

Products cataloged herein meet or exceed the following standards: UL 486B, UL 414, NEMA 250, ANSI C12.7 Florida Meter Group requirements

Voltage:

All devices are rated at 600V AC
Type K-4 rated at 300V AC





Meter Socket Terminology

Maximum and Continuous Ampacity

UL and NEMA standards allow most electrical devices to be tested at one amp level ("continuous"), then allowed 125% rating as "maximum". For example, a "400 Amp" socket may either mean 400 Amps continuous (K-4) or 400A Max, 320A continuous which is also made by most competitors.

Wire Sizes - Ampacity

Connectors accept a fairly wide variety of wire sizes. On the AT socket, a 350 MCM connector accepts conductors from #6 up to 350 MCM. The NEC specifies the ampacity of each wire size and type, also taking into account how the wire is installed in conduit.

Lay-in & Stud Terminals

Lay-in terminals are fixed and may not be modified in the field to accept other wire sizes or parallel conductors. Stud terminals accept either lugs (see Product Schedule 497) or compression fittings (not available from Landis & Gyr). Common uses for studs include where the field wiring may be either single or parallel. Terminals may be mixed on the line and load sides, e.g. stud on the line and lay-in on the load side.

Ringless/Ring Style

Ring-type is an older, vanishing concept requiring a sealing ring. Landis & Gyr recently added tooling to build this type of socket for the few remaining utilities that require them. In ringless design, the seal is made not on a sealing ring but using the cover and "swing latch" as the point of sealing.

Overhead/Underground

Sockets for UG service are usually wider in order to provide space for the conductors to loop around the block to the top connectors. Since more material is required in the enclosure, UG sockets are more expensive than OH sockets. Quite popular are combination units (OH/UG) which may be used in either service, and require a cover plate if used with UG feed.

Hubs and Cover Plates

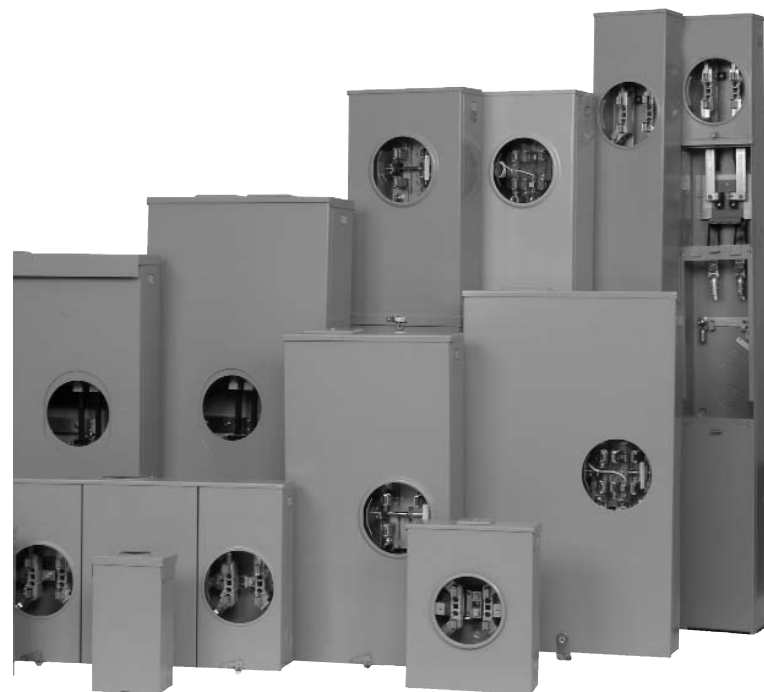
Top of socket with hub opening has a flanged lip to keep out moisture. This requires a hub or cover plate to close. There are two sizes of openings: "small" for conduit hubs with sizes of 1", 1-1/4", 1-1/2", 2", and 2-1/2"; and "large" for conduit hubs with sizes 3", 3-1/2", and 4". See Product Schedule 499. Landis & Gyr hub openings conform to ANSI C12.7 specs and are interchangeable with other socket manufacturers, but are not interchangeable with panel board style hubs.

Bypass Types

A self-contained meter completes the circuit between the utility and the customer. In order to change the meter, the circuit must be broken, turning off the power to the customer. This is not acceptable in commercial establishments, or in many other types of services. A bypass allows a parallel path for the current flow, un-metered, while the meter is pulled.

Types are:

- a) Lever-operated jaw release, also known as jaw clamping lever bypass (Landis & Gyr type HQ). The best, because the meter cannot accidentally be pulled unless the bypass is engaged. Pulling the meter would also be a major safety hazard if there is a 480V installation and/or a large load in place, as the meter would then act as a switch, and cause arc.
- b) Lever-operated non-jaw release (Landis & Gyr type CQ). Lever bypasses the meter, but the meter may be removed with the bypass open.
- c) Horn bypass (option on residential sockets). Tangs on line and load connectors allow for jumper leads to be fitted over them before the meter is pulled.
- d) Manual bypass (K-4, K-5, K-7) uses separate "links", which are clamped onto special studs before the meter is removed. K-7 also uses a "rotating link" type bypass.
- e) Other types not made by Landis & Gyr include: slide links, screw type, and automatic circuit closers.





Q & A Product Sheets

Q. How can I find a missing "lug" for a (Catalog No. _____) meter socket?

A. If the socket is a residential type, the customer usually needs the nut/screw assembly that clamps the wire into place in a lay-in style connector. There are different types of nut/screws. You will need to determine the catalog number of the device, and if it is to be used on the line side, load side or neutral. With a commercial device, the customer may look for a ground lug or mechanical lug for a stud type meter socket. In these cases the customer should contact a technical support person, or refer to the specification sheet for the correct lug.

The customer may mistake the number, that is stamped on the part, (e.g. "6T0350") as the catalog number. This is actually the wire size that is stamped into the nut/screw assembly for a HQ style device. "6 TO 350" refers to the wire size range of the connector.

Q. How can I find a replacement insulator, block, or porcelain/ceramic insulator?

A. First, determine the catalog number of the device. After the device has been identified you can then inquire if it is "left hand or right hand", and if it is used on a side wired device or a multi-position gang socket. On standard residential sockets, the right and left hand blocks are identical, and are mounted in a mirror image of each other.

Q. What size hub can I use on a RX or HD hub opening?

A. A RX style hub opening will accept a 1" to 2-1/2" hub. A HD style hub opening will accept a 3" to 4" hub.

Q. How can I permanently close the meter opening of my meter socket without a meter in place?

A. A round black plastic disk (Catalog No. 39968) is available. It is located between the meter socket block assembly and the meter socket cover. The cover holds the disk into place. This is used on residential and most commercial sockets that have embossed meter openings in the socket cover.

Q. What do I use to close the meter opening, and also permanently jumper the meter socket so that the end user still gets power, although unmetered?

A. For all devices with jaws, use jumper (Catalog No.36479). Two jumpers are needed for a single phase device and three for a three phase device.

Q. What if I need an isolated neutral?

A. Some applications require the neutral connection to be isolated or insulated. Isolated neutral kits are available for CQ and HQ (Catalog No. 64685-1) and K-7 devices (Catalog No.69685-1).

Q. What if I need a 5th Jaw or 5th Terminal?

A. Residential sockets (type UAXXXX) use two different types of field installable 5th terminals. Catalog No. 659-0121 for a grounded 5th terminal is most commonly used. Use Catalog No. 659-0120 when the 5th terminal does not need to be grounded. The 5th terminal for a HQ device (Catalog No. 35815-2) is in the form of a polycarbonate, safety shield with the 5th terminal located in the 9 o'clock position.

Q. What lugs should I use for a particular meter socket?

A. Lugs are included on most residential devices. A limited number of residential devices are available with stud connections. Commercial devices (HQ, CQ, K Base) have either the lug as an integral part of the socket (200amp HQ only) or have 3/8" or 1/2" stud connections. The catalog page for each commercial device with stud connections includes a list of recommended lugs. Lugs with an opening size of 13/32" are for 3/8" studs and lugs with an opening of 9/16" are for 1/2" studs. Lugs should be chosen based on the size and number of conductors being pulled to the socket. Some lugs are for specific types of sockets (K Base or HQ). Please refer to the accessories page for more details.



Q & A Product Sheets

Q. What is the voltage rating for Landis & Gyr meter sockets?

A. All meter sockets manufactured by Landis & Gyr are rated for up to 600 volts, with the exception of type K-4, which is rated at 300 volts.

Q. What material is used for the Landis & Gyr meter socket enclosures?

A. Landis & Gyr uses type G-90 galvanized steel and aluminum for its enclosures. Pedestals used in Chicago use G-210 steel.

Q. What type of finish is applied to the enclosures?

A. Landis & Gyr has a high quality reputation for its gray, baked on polyester powder coat, which is long lasting and withstands salt spray testing. Aluminum enclosures are normally supplied unpainted, but can be supplied with the same polyester coating as used on steel.

Q. What rating do Landis & Gyr meter socket enclosures carry?

A. Landis & Gyr enclosures have a NEMA type 3R rating.

Q. Are Landis & Gyr meter sockets UL listed?

A. Landis & Gyr offers all of its product lines with the UL listing. On occasion, we supply special devices that are not UL listed, to utilities that do not require the UL label.

Q. What label information can be found on the inside of the meter socket?

A. Every Landis & Gyr meter socket has a white information label, approximately 2-1/2" x 4" in size. It is located on the upper left hand inside wall of the enclosure. This label contains the following information: Catalog Number, Socket Type (UAT4, HQ-7U etc.), Number of Terminals (jaws), Continuous/Maximum Amperage, Voltage Rating, Service (single phase or three phase), Short Circuit Withstand Rating, Other UL Information, Included lay-in connector sizes or recommended lugs if stud type, Conduit Hub Kit Options and Accessories, where the device is manufactured and the date it was manufactured.

Q. How do I find the production date code for a Landis & Gyr meter socket?

A. The date code is printed towards the center of the bottom of the interior label. The date code will specify the month and year the socket was manufactured.

Q. What is the difference between 320 Amp sockets with 3/8" studs and those with 1/2" studs?

A. Landis & Gyr was the pioneer of class 320 metering. Originally it was believed that a socket with heavy duty connectors and jaw assemblies were needed to withstand this "high" amperage. Landis & Gyr introduced the HQ-D type block which features heavy plated copper connectors and 1/2" studs for mounting mechanical lugs. After receiving requests for a lighter-duty socket Landis & Gyr introduced the HQ-S type block. This block features the same heavy-duty connectors, but has 3/8" studs for mounting the mechanical lugs. Check with your local utility to see which block style is preferred.

Q. What is an anti-inversion clip?

A. The anti-inversion clip (Catalog No. 59676) is a specially formed wire that is inserted into the upper right hand jaw of a 320A meter socket. The purpose of the clip is to disallow a 200A meter to be inserted into the 320A meter socket. Class 320 meters are built with a narrow blade that will fit into a jaw that has the anti-inversion clip installed. The anti-inversion clip also restricts a class 320 meter from being inserted upside down.



Q & A Product Sheets

Q. What type of information can I find in the Landis & Gyr catalog?

- A. Landis & Gyr publishes two types of catalogs. Our general catalog has Product Schedules containing detailed information for each type of product Landis & Gyr manufactures. Product Schedule #400 outlines the complete product offering and guides the user to the correct Product Schedule based on criteria such as: electrical service, form of meter being used, number of terminals (jaws), amperage, etc. Special accessories schedules near the back of the catalog show bypasses, tools, hubs and cover plates, 5th terminal kits, isolated neutral kits and ring-type socket sealing rings.

Landis & Gyr also publishes special catalogs for NEMRA trade territories, based on utility requirements. These catalogs are provided for the Contractor and Industrial (C & I) distribution market by authorized Landis & Gyr manufacturer representative organizations. These catalogs show only the products that pertain to the specific service territory. The C & I catalogs also include special accessories and lug information on the back pages. For detailed product information, customers can be referred to the corresponding Product Schedule in the general catalog.

Q. What is K-base?

- A. K-base is the term used for a special way of metering continuous amperages of 400A or higher. Before the introduction of K-base metering, which was pioneered by Landis & Gyr, all loads over 320A had to use transformer rated metering. The K-base concept employs a meter with internal transformers to accept loads of up to 600A maximum and a meter-mounting device with heavy-duty bussing that holds the meter in place with the use of bolts. K-base meters and mounting devices are available for single phase, network and three phase applications. The K-base concept is continually growing as new utilities approve its usage each year.

Q. Which socket do I choose for a 400 Amp application?

- A. There are 3 ways of metering a 400A application. Some utilities prefer a 320A meter socket, some prefer a 400A K base, still others prefer to use current transformers. Your local utility could use one or a combination of any of these methods. Please contact your local utility prior to purchasing a socket to ensure you have the right device for your application.

Q. What is the difference between an RX hub and a HD hub?

- A. The RX hub is a small base ANSI compliant hub. The size ranges from 3/4" to 2-1/2". The HD hub is a large base ANSI compliant hub. The size ranges from 3" to 4". An HD size opening may be reduced to an RX size using an accessory adaptor plate.



135A Meter Mounting Equipment, Residential ①②

4 & 5 Terminal for 1 Phase, 3 Wire

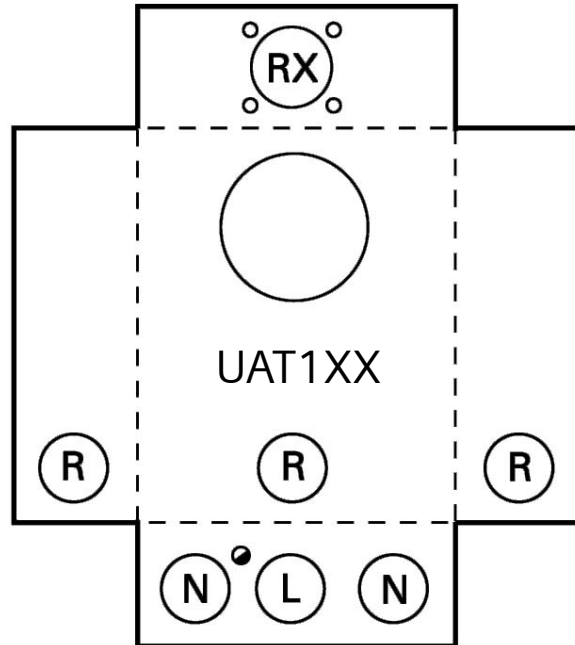
| Cont. Amp Rating | Service | Connectors Line | Connectors Load | Dimensions (inches) | | | Hub Opening | Bypass | Catalog Number |
|---|---------|-----------------|-----------------|---------------------|------|-----|---------------------|--------|----------------|
| | | | | W | H | D | | | |
| 135 | OH/UG | #14-2/0 | #14-2/0 | 8.0 | 11.7 | 3.6 | RX Opening | None | UAT111-0G |
| <i>Approved for Wisconsin Public Service, Wisconsin Electric Power Co, Madison Gas & Electric, and Wisconsin Power & Light (Alliant Energy)</i> | | | | | | | | | |
| 135 | OH/UG | #14-2/0 | #14-2/0 | 8.0 | 11.7 | 3.6 | 1.25" Hub Installed | Horn | UAT111-BPQG |
| 135 | OH/UG | #14-2/0 | #14-2/0 | 8.0 | 11.7 | 3.6 | RX Opening | Horn | UAT111-0PQG |

① All units are UL listed and include a quad neutral.

② 5th terminal for field installation: H659-0121.



UAT111-0G



KNOCKOUTS (inches):

| | |
|-----|---------------------------|
| ○: | 1/4 |
| L: | 1/2, 3/4, 1, 1-1/4, 1-1/2 |
| N: | 3/4, 1, 1-1/4, 1-1/2, 2 |
| R: | 1, 1-1/4, 1-1/2, 2 |
| RX: | Ø2.750 HUB OP |



200A Meter Mounting Equipment, Residential ①②

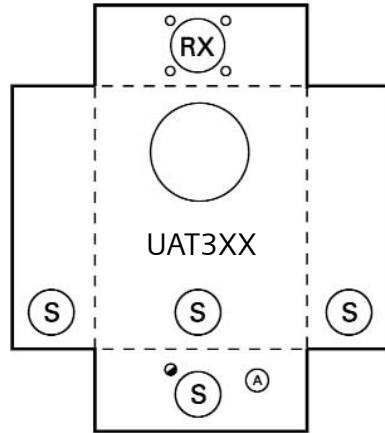
4 & 5 Terminal for 1 Phase, 3 Wire

| Cont. Amp Rating | Service | Connectors Line | Connectors Load | Dimensions (inches) | | | Hub Opening | Bypass | Catalog Number |
|---|---------|-----------------|-----------------|---------------------|------|-----|------------------|--------|----------------|
| | | | | W | H | D | | | |
| 200 | OH | #6-350 kcmil | #6-350 kcmil | 8.0 | 15.0 | 4.5 | RX Opening | None | UAT317-0G |
| 200 | OH/UG | #6-350 kcmil | #6-350 kcmil | 11.0 | 15.0 | 4.5 | RX Opening | None | UAT417-0G |
| 200 | OH/UG | #6-350 kcmil | #6-350 kcmil | 11.0 | 15.0 | 4.5 | RX Cl. Plate | None | UAT417-XG |
| 200 | UG | #6-350 kcmil | #6-350 kcmil | 11.0 | 15.0 | 4.5 | Blank | None | UAT417-PG |
| Approved for Wisconsin Public Service, Wisconsin Electric Power Co, Madison Gas & Electric, and Wisconsin Power & Light (Alliant Energy) | | | | | | | | | |
| 200 | OH | #6-350 kcmil | #6-350 kcmil | 8.0 | 15.0 | 4.5 | RX Opening | Horn | UAT317-0PQG |
| 200 | OH | #6-350 kcmil | #6-350 kcmil | 8.0 | 15.0 | 4.5 | 2" Hub Installed | Horn | UAT317-DPQG |
| Approved for Wisconsin Electric Power Co, Madison Gas & Electric, and Wisconsin Power & Light (Alliant Energy) | | | | | | | | | |
| 200 | OH/UG | #6-350 kcmil | #6-350 kcmil | 11.0 | 15.0 | 4.5 | RX Opening | Horn | UAT417-0PQG |
| 200 | OH/UG | #6-350 kcmil | #6-350 kcmil | 11.0 | 15.0 | 4.5 | RX Cl. Plate | Horn | UAT417-XPQG |

- ① All units are UL listed and include a quad neutral.
 ② 5th terminal for field installation: 659-0121.

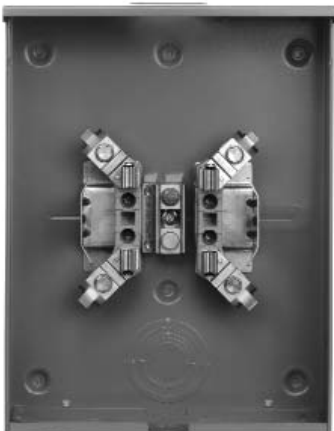


UAT317-0G

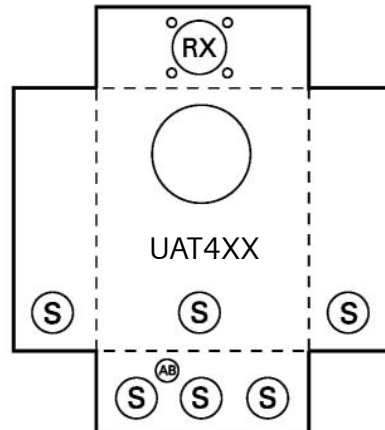


KNOCKOUTS (inches):

| | |
|-----|---------------------------|
| ●: | 1/4 |
| A: | 1/2 |
| S: | 1, 1-1/4, 1-1/2, 2, 2-1/2 |
| AB: | 1/4, 1/2, 7/8 |
| RX: | ∅2.750 HUB OP |



UAT417-0PQG





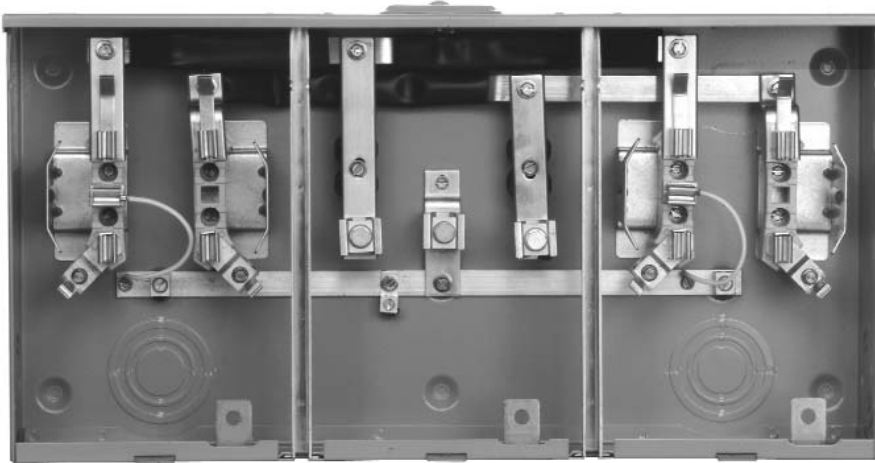
100A/150A Meter Mounting Equipment, Horizontal Gang, Residential ①②③

4 & 5 Terminal for 1 Phase, 3 Wire

| No. Pos. | Cont. Amp Rating | Overall Ampacity | Service | Connectors Line | Connectors Load | Dimensions (in.) | | | Hub Opening | Bypass | Catalog Number |
|---|------------------|------------------|---------|-----------------|-----------------|------------------|------|-----|-------------|--------|----------------|
| | | | | | | W | H | D | | | |
| 2 | 100 | 100 | OH/UG | #6-350 kcmil | #14-2/0 | 24.0 | 12.0 | 4.5 | RX Opening | None | UA2311-0G |
| 2 | 150 | 150 | OH/UG | #6-350 kcmil | #6-350 kcmil | 24.0 | 12.0 | 4.5 | RX Opening | None | UA2313-0G |
| 3 | 150 | 203 | OH/UG | #6-350 kcmil | #6-350 kcmil | 32.0 | 12.0 | 4.5 | RX Opening | None | UA3313-0G |
| 4 | 150 | 270 | OH/UG | #6-350 kcmil | #6-350 kcmil | 40.0 | 12.0 | 4.5 | RX Opening | None | UA4313-0G |
| <i>Approved for Wisconsin Public Service, Wisconsin Electric Power Co, Madison Gas & Electric, and Wisconsin Power & Light (Alliant Energy)</i> | | | | | | | | | | | |
| 2 | 100 | 100 | OH/UG | #6-350 kcmil | #14-2/0 | 24.0 | 12.0 | 4.5 | RX Opening | Horn | UA2311-0PQG ③ |
| 3 | 100 | 135 | OH/UG | #6-350 kcmil | #14-2/0 | 32.0 | 12.0 | 4.5 | RX Opening | Horn | UA3311-0PQG ③ |
| 4 | 100 | 180 | OH/UG | #6-350 kcmil | #14-2/0 | 40.0 | 12.0 | 4.5 | RX Opening | Horn | UA4311-0PQG ③ |

- ① All units are UL listed and are equipped with a ground lug.
- ② 5th Terminal Kit for field installation: H659-0121.
- ③ Sockets with "QG" suffix are equipped with 2 ground lugs.

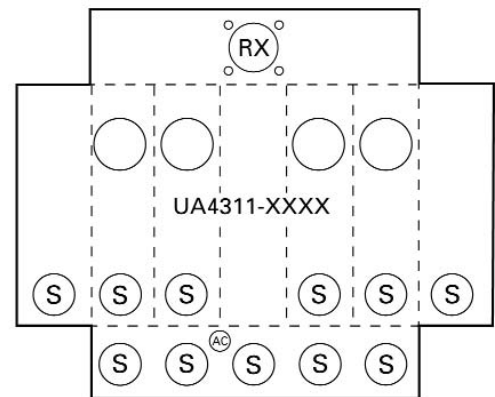
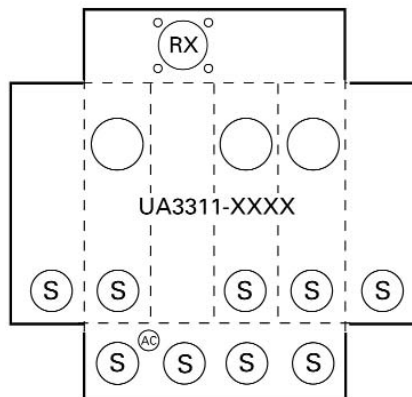
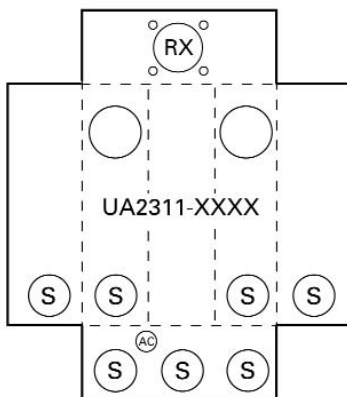
Residential
100/150A - 4 & 5 Jaw - Ringless



UA2311-0PQG with H659-0121 installed

KNOCKOUTS (inches):

S: 1, 1-1/4, 1-1/2, 2, 2-1/2
 AC: 1/4, 1/2
 RX: Ø2.750 HUB OP





200A/Position Meter Mounting Equipment, Horizontal Gang, Residential ①②

4 & 5 Terminal for 1 Phase, 3 Wire

| No. Pos. | Cont. Per Pos. | Amps | Overall Ampacity | Service Line | Connectors | Connectors Load | Dimensions (in.) | | | Hub Opening | Bypass | Enclosure Material | Catalog Number |
|----------|----------------|------|------------------|--------------|-------------------|-----------------|------------------|------|-----|-----------------|--------|--------------------|----------------|
| 2 | 200 | 200 | 200 | OH/UG | 1/0-600 kcmil | #6-350 kcmil | 24.0 | 14.5 | 5.1 | HD Opening | None | Steel | UA2717-YG |
| 2 | 200 | 200 | 200 | OH/UG | 1/0-600 kcmil | #6-350 kcmil | 24.0 | 14.5 | 5.1 | HD Opening | Horn | Steel | UA2717-YPQG ③ |
| 3 | 200 | 270 | 270 | OH/UG | 1/0-600 kcmil | #6-350 kcmil | 32.0 | 14.5 | 5.1 | HD Opening | Horn | Steel | UA3717-YPQG ③ |
| 4 | 200 | 360 | 360 | OH/UG | 1/0-600 kcmil | #6-350 kcmil | 43.0 | 14.5 | 5.1 | HD Opening | Horn | Steel | UA4717-YPQG ③ |
| 5 | 200 | 450 | 450 | OH/UG | (2) 1/0-600 kcmil | #6-350 kcmil | 51.0 | 14.5 | 5.1 | (2) HD Openings | Horn | Steel | UA5719-KPQG ③ |
| 6 | 200 | 528 | 528 | OH/UG | (2) 1/0-600 kcmil | #6-350 kcmil | 59.0 | 14.5 | 5.1 | (2) HD Openings | Horn | Steel | UA6719-KPQG ③ |
| 2 | 200 | 200 | 200 | | 3/8" Stud | #6-350 KCMIL | 27.0 | 17.0 | 5.1 | HD Opening | Horn | | UA291A-YFG |
| 3 | 200 | 270 | 270 | | 3/8" Stud | #6-350 KCMIL | 35.0 | 17.0 | 5.1 | HD Opening | Horn | | UA391A-YFG |
| 4 | 200 | 360 | 360 | | 3/8" Stud | #6-350 KCMIL | 46.0 | 17.0 | 5.1 | HD Opening | Horn | | UA491A-YFG |

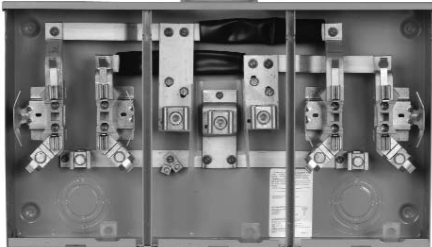
Approved for Wisconsin Public Service, Wisconsin Electric Power Co, Madison Gas & Electric, and Wisconsin Power & Light (Alliant Energy)

| | | | | | | | | | | | | | |
|---|-----|-----|-----|-------|-------------------|--------------|----|------|-----|-----------------|------|-------|-------------|
| 2 | 200 | 200 | 200 | OH/UG | 1/0-600 kcmil | #6-350 kcmil | 24 | 14.5 | 5.1 | HD Opening | Horn | Steel | UA2717-YPCH |
| 3 | 200 | 270 | 270 | OH/UG | 1/0-600 kcmil | #6-350 kcmil | 32 | 14.5 | 5.1 | HD Opening | Horn | Steel | UA3717-YPCH |
| 4 | 200 | 360 | 360 | OH/UG | 1/0-600 kcmil | #6-350 kcmil | 43 | 14.5 | 5.1 | HD Opening | Horn | Steel | UA4717-YPCH |
| 5 | 200 | 450 | 450 | OH/UG | (2) 1/0-600 kcmil | #6-350 kcmil | 51 | 14.5 | 5.1 | (2) HD Openings | Horn | Steel | UA5719-KPCH |
| 6 | 200 | 528 | 528 | OH/UG | (2) 1/0-600 kcmil | #6-350 kcmil | 59 | 14.5 | 5.1 | (2) HD Openings | Horn | Steel | UA6719-KPCH |

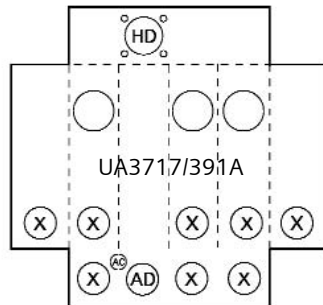
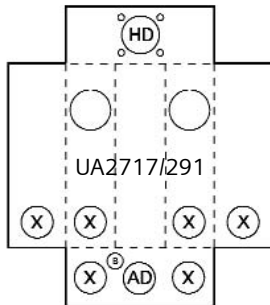
① All units are UL listed and are equipped with a ground lug.

③ Sockets with "QG" suffix are supplied with 2 ground lugs.

② 5th Terminal Kit for field installation: H659-0121.

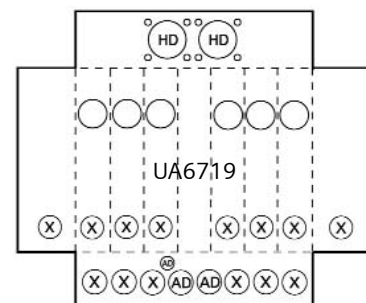
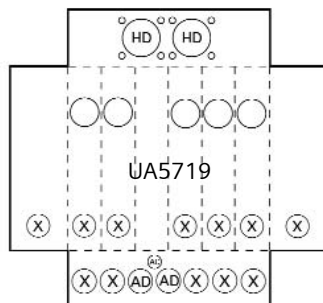
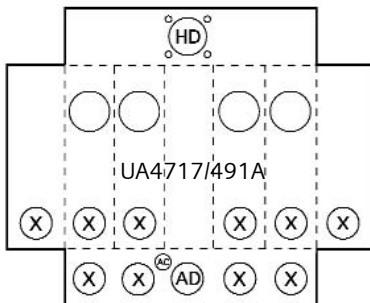


UA2717-YPQG



KNOCKOUTS (inches):

| | |
|-----|---------------------------|
| B: | 1/2, 3/4 |
| X: | 1-1/4, 1-1/2, 2, 2-1/2 |
| AC: | 1/4, 1/2 |
| AD: | 1-1/4, 1-1/2, 2, 2-1/2, 3 |
| HD: | Ø4.281 HUB ØP |





200A Meter Mounting Equipment, Type CQ: Non-Jaw Clamping, Residential/Commercial ①②③ 4 Terminal for 1 Phase, 3 Wire • 7 Terminal for 3 Phase, 4 Wire

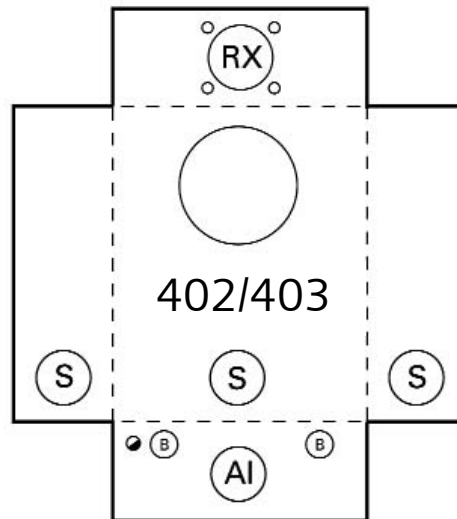
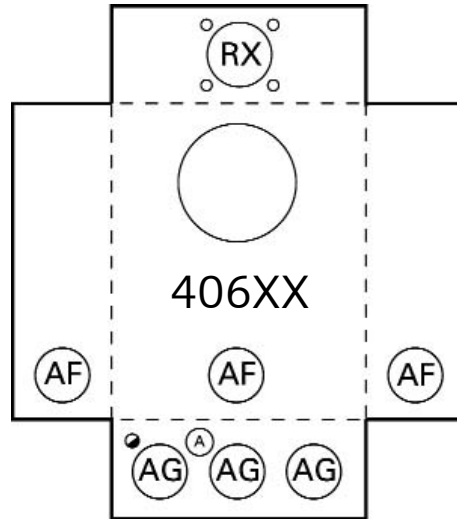
| Cont. Amp Rating | Service | Connectors | Dimensions (in.) | | | Hub Opening | No. of Term. | Catalog Number |
|------------------|---------|--------------|------------------|------|-----|--------------|--------------|----------------|
| | | | W | H | D | | | |
| 200 | OH/UG | #6-300 kcmil | 13.0 | 19.0 | 5.2 | RX Cl. Plate | 4 | 40604-025 |
| 200 | OH | #6-300 kcmil | 10.0 | 17.5 | 5.2 | RX Opening | 4 | 40204-01 |
| 200 | OH | #6-300 kcmil | 10.0 | 17.5 | 5.2 | RX Opening | 7 | 40307-01NU |
| 200 | OH/UG | #6-300 kcmil | 13.0 | 19.0 | 5.2 | RX Opening | 7 | 40607-01NU |

- ① All units are UL listed.
- ② Type CQ bypass mechanism is lever-operated, non-jaw clamping.
- ③ Disconnect sleeves should not be used with these devices.

Residential/Commercial
200 Amp - 4 & 7 Jaw - Ringless



40607-01NU



KNOCKOUTS (inches):

| | |
|-----|-----------------------------------|
| ●: | 1/4 |
| A: | 1/2 |
| B: | 1/2, 3/4 |
| S: | 1, 1-1/4, 1-1/2, 2, 2-1/2 |
| AF: | 1, 1-1/2, 2, 2-1/2, 3 |
| AG: | 3/4, 1, 1-1/4, 1-1/2, 2, 2-1/2, 3 |
| AI: | 1, 1-1/4, 1-1/2, 2, 2-1/2, 3 |
| RX: | ∅2.750 HUB OP |

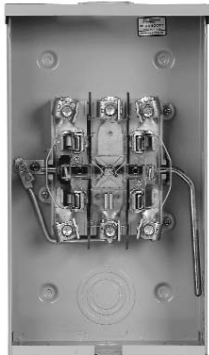


200A Continuous Meter Mounting Equipment, Type HQ, Residential/Commercial/Industrial ①②

4 Terminal for 1 Phase, 3 Wire • 5 Terminal for 1 Phase & 3 Phase, 3 Wire • 7 Terminal for 3 Phase, 4 Wire

| Cont./Max Amp Rating | Type | Service | Connectors Line | Connectors Load | Dimensions (in.) W H D | | | Hub Opening | No. of Terminals | Catalog Number |
|---|---------|---------|--------------------|--------------------|---------------------------|------|-----|----------------|---------------------|-------------------|
| <i>Approved for Wisconsin Public Service and Wisconsin Electric Power Co. for 3 Phase, 3 Wire Service</i> | | | | | | | | | | |
| 200 | HQ-5NDU | OH/UG | #6-350 kcmil | #6-350 kcmil | 13.0 | 19.0 | 5.2 | RX Cl. Plate | 5 | 9804-8592 ③ |
| <i>Approved for Wisconsin Public Service, Madison Gas & Electric, and Wisconsin Electric Power Co.</i> | | | | | | | | | | |
| 200 | HQ-4 | OH | #6-350 kcmil | #6-350 kcmil | 10.0 | 17.5 | 5.2 | RX Opening | 4 | 40804-01QG ④ |
| <i>Approved for Wisconsin Public Service, Madison Gas & Electric, Wisconsin Electric Power Co, and Wisconsin Power & Light (Alliant Energy)</i> | | | | | | | | | | |
| 200 | HQ-4U | OH/UG | #6-350 kcmil | #6-350 kcmil | 13.0 | 19.0 | 5.2 | RX Cl. Plate | 4 | 40404-02QG ④ |
| 200 | HQ-5 | OH | #6-350 kcmil | #6-350 kcmil | 10.0 | 17.5 | 5.2 | RX Opening | 5 | 40005-01QG ③④ |
| 200 | HQ-5U | OH/UG | #6-350 kcmil | #6-350 kcmil | 13.0 | 19.0 | 5.2 | RX Cl. Plate | 5 | 40405-02QG ③④ |
| 200 | HQ-7 | OH | #6-350 kcmil | #6-350 kcmil | 10.0 | 17.5 | 5.2 | RX Opening | 7 | 40007-01QG ④ |
| 200 | HQ-7U | OH/UG | #6-350 kcmil | #6-350 kcmil | 13.0 | 19.0 | 5.2 | RX Cl. Plate | 7 | 40407-02QG ④ |
| <i>Approved for Xcel Energy</i> | | | | | | | | | | |
| 200 | HQ-5S | OH/UG | 3/8-24 Stud | 3/8-24 Stud | 13.0 | 19.0 | 5.2 | RX Cl. Plate | 5 | 42505-025 ③ |
| 200 | HQ-5U | OH/UG | #6-350 kcmil | #6-350 kcmil | 13.0 | 19.0 | 5.2 | RX Cl. Plate | 5 | 40405-02CO ⑤ |
| 200 | HQ-7 | OH | #6-350 kcmil | #6-350 kcmil | 10.0 | 17.5 | 5.2 | RX Opening | 7 | 40007-01F |
| 200 | HQ-7U | OH/UG | #6-350 kcmil | #6-350 kcmil | 13.0 | 19.0 | 5.2 | RX Cl. Plate | 7 | 40407-025 |

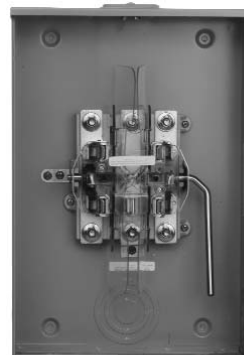
- ① All units are UL listed and are not suitable for use with disconnect sleeves.
- ② Bypass mechanism is lever-operated, jaw pressure release with 100% bypass capacity
- ③ Devices have 5th terminal in the 6 o'clock position and are not for use with 3 phase, 4 wire service. Neutral can be isolated by removing the ground strap.
- ④ Sockets with "QG" suffix are supplied with 2 ground lugs.
- ⑤ Devices have 5th terminal in the 9 o'clock position and are not for use with 3 phase, 4 wire service.



40005-01QG



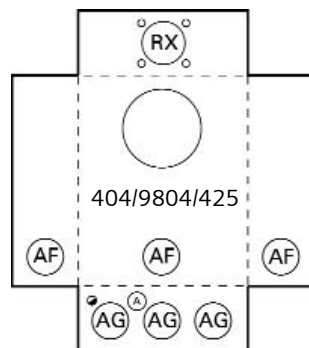
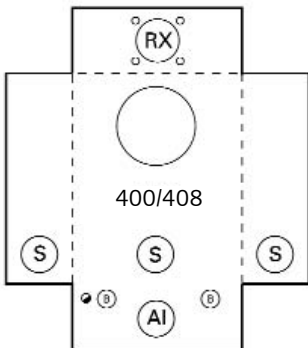
40405-02CO



42505-025



40407-025



KNOCKOUTS (inches):

- : 1/4
- A: 1/2
- B: 1/2, 3/4
- S: 1, 1-1/4, 1-1/2, 2, 2-1/2
- AF: 1, 1-1/2, 2, 2-1/2, 3
- AG: 3/4, 1, 1-1/4, 1-1/2, 2, 2-1/2, 3
- AI: 1, 1-1/4, 1-1/2, 2, 2-1/2, 3
- RX: ∅2.750 HUB OP



320A Continuous/400A Maximum, Meter Mounting Equipment, Type HQ Residential/Commercial ①②

4 Terminal for 1 Phase, 3 Wire • 5 Terminal for 1 Phase & 3 Phase, 3 Wire • 7 Terminal for 3 Phase, 4 Wire

| Cont. Amp Rating | Type | Service | Connectors Line | Connectors Load | Dimensions (in.) | | | Hub Opening | No. of Term. | Catalog Number |
|--|---------|---------|-----------------|-----------------|------------------|------|-----|--------------|--------------|----------------|
| | | | | | W | H | D | | | |
| 320 | HQ-4SWT | OH/UG | 3/8-24 Stud | 3/8-24 Stud | 16.0 | 31.0 | 5.0 | HD Cl. Plate | 4 | 48104-02 |
| 320 | HQ-4ST | UG | 3/8-24 Stud | 3/8-24 Stud | 13.0 | 28.0 | 5.0 | None | 4 | 48504-92 |
| 320 | HQ-5D | OH/UG | 1/2-20 Stud | 1/2-20 Stud | 14.0 | 28.0 | 6.0 | HD Opening | 5 | 47705-01FL ③ |
| Approved for Wisconsin Electric Power Co. | | | | | | | | | | |
| 320 | HQ-4SWT | OH/UG | 3/8-24 Stud | 3/8-24 Stud | 16.0 | 31.0 | 5.0 | HD Cl. Plate | 4 | 48104-82WI ④ |
| Approved for Xcel Energy | | | | | | | | | | |
| 320 | HQ-4SWT | OH/UG | #4-600 kcmil | #4-600 kcmil | 16.0 | 31.0 | 5.0 | HD Cl. Plate | 5 | 4810F-02FL ⑥ |
| 320 | HQ-7D | OH/UG | 1/2-20 Stud | 1/2-20 Stud | 14.0 | 28.0 | 6.0 | HD Opening | 7 | 47707-01FL |
| Approved for Wisconsin Power & Light (Alliant Energy) | | | | | | | | | | |
| 320 | HQ-7DSW | OH/UG | 3/0-800 kcmil | 1/2-20 Stud | 20.0 | 34.0 | 6.0 | HD Cl. Plate | 7 | 44707-02PP ⑤ |

- ① All units are UL listed with lever operated, jaw pressure release bypass mechanism rated at 100%.
- ② Disconnect sleeves should not be used with these devices.
- ③ 5th terminal in 6 o'clock position. Not for use with 3 phase, 4 wire service.
- ④ Includes anti-inversion clip.
- ⑤ Line neutral limited to 500 kcmil wire.
- ⑥ Requires addition of anti-inversion clip H59676 for Xcel. 5th terminal in 9 o'clock position. Not for use with 3 phase, 4 wire service.

Residential/Commercial
320 Amp - 4, 5 & 7 Jaw - Ringless



47707-01FL

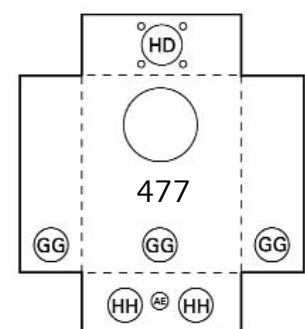
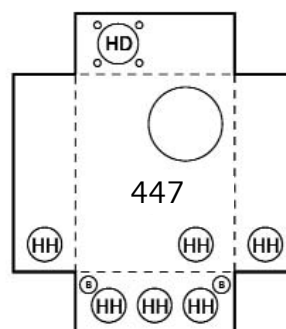
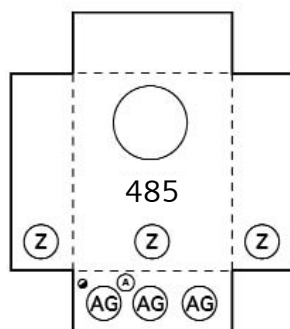
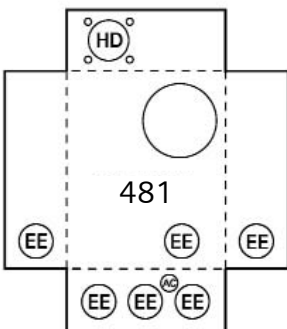


48504-92



44707-02PP

| KNOCKOUTS (inches): | |
|---------------------|-----------------------------------|
| ● | 1/4 |
| A: | 1/2 |
| B: | 1/2, 3/4 |
| Z: | 1-1/2, 2, 2-1/2 |
| EE: | 2, 2-1/2, 3 |
| GG: | 2-1/2, 3, 3-1/2 |
| HH: | 2-1/2, 3, 3-1/2, 4 |
| AC: | 1/4, 1/2 |
| AE: | 1/4, 1/2, 3/4, 1, 1-1/4 |
| AG: | 3/4, 1, 1-1/4, 1-1/2, 2, 2-1/2, 3 |
| HD: | ∅4.281 HUB OP |

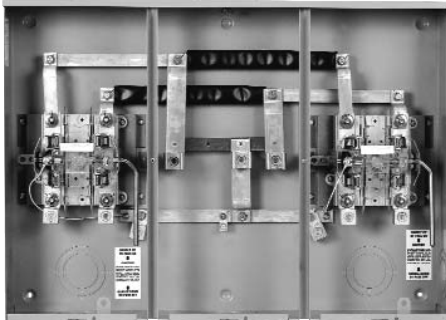




200A/Position Meter Mounting Equipment, Horizontal Gang, Residential ①② 5 & 7 Terminal for 1 Phase, 3 Wire

| No. Pos. | Cont. Amp Rating | Overall Ampacity | Service | Connectors Line | Connectors Load | Dimensions (in.) | | | Hub Opening | No. of Term. | Bypass | Enclosure Material | Catalog Number |
|----------|------------------|------------------|---------|-------------------|-----------------|------------------|------|-----|-----------------|--------------|--------|--------------------|----------------|
| | | | | | | W | H | D | | | | | |
| 2 | 200 | 250 | OH/UG | 1/0-500 kcmil | #6-350 kcmil | 32.8 | 23.2 | 6.0 | HD Opening | 5 | Lever | Steel | 404052-023NU ③ |
| 2 | 200 | 250 | OH/UG | 1/0-500 kcmil | #6-350 kcmil | 32.8 | 23.2 | 6.0 | HD Opening | 7 | Lever | Steel | 404053-023NU |
| 3 | 200 | 300 | OH/UG | 1/0-500 kcmil | #6-350 kcmil | 43.9 | 23.2 | 6.0 | HD Opening | 5 | Lever | Steel | 404054-223NU ③ |
| 3 | 200 | 300 | OH/UG | 1/0-500 kcmil | #6-350 kcmil | 43.9 | 23.2 | 6.0 | HD Opening | 7 | Lever | Steel | 404055-223NU |
| 4 | 200 | 410 | OH/UG | (2) 1/0-500 kcmil | #6-350 kcmil | 61.0 | 23.2 | 6.0 | (2) HD Openings | 5 | Lever | Steel | 404056-223NU ③ |
| 4 | 200 | 410 | OH/UG | (2) 1/0-500 kcmil | #6-350 kcmil | 61.0 | 23.2 | 6.0 | (2) HD Openings | 7 | Lever | Steel | 404072-023NU |
| 5 | 200 | 500 | OH/UG | (2) 1/0-500 kcmil | #6-350 kcmil | 72.1 | 23.2 | 6.0 | (2) HD Openings | 5 | Lever | Steel | 404073-023NU ③ |
| 5 | 200 | 500 | OH/UG | (2) 1/0-500 kcmil | #6-350 kcmil | 72.1 | 23.2 | 6.0 | (2) HD Openings | 7 | Lever | Steel | 404074-223NU |
| 6 | 200 | 620 | OH/UG | (2) 1/0-500 kcmil | #6-350 kcmil | 83.2 | 23.2 | 6.0 | (2) HD Openings | 5 | Lever | Steel | 404075-223NU ③ |
| 6 | 200 | 608 | OH/UG | (2) 1/0-500 kcmil | #6-350 kcmil | 83.2 | 23.2 | 6.0 | (2) HD Openings | 7 | Lever | Steel | 404076-223NU |

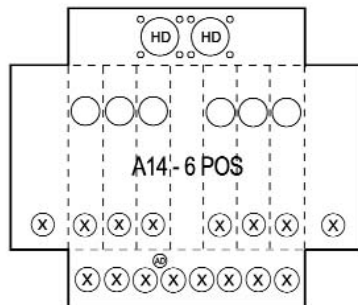
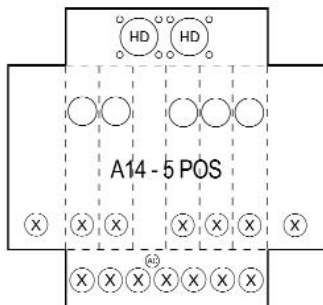
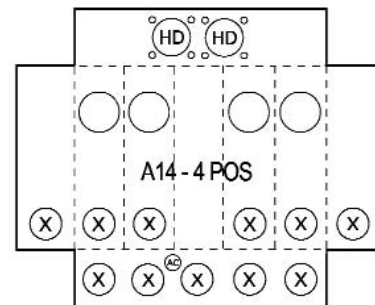
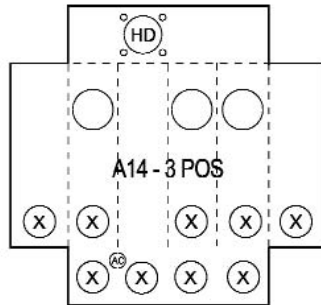
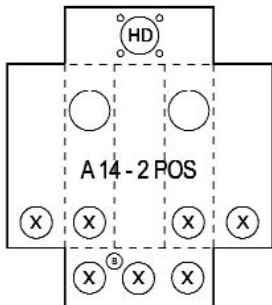
- ① All units are UL listed and are equipped with a ground lug.
- ② Bypass is clamp jaw, lever operated and is rated for 100%.
- ③ 5th Terminal included in the 9 o'clock position.



404052-023NU



404073-023NU



KNOCKOUTS (inches):

| | |
|-----|--------------------|
| B: | 1/2, 3/4 |
| X: | 2, 2-1/2, 3, 3-1/2 |
| AC: | 1/4, 1/2 |
| HD: | Ø4.281 HUB OP |



100A/200A Meter Mounting Equipment, Meter Main, Residential ①

4 & 5 Terminal for 1 Phase, 3 Wire

| Rating | Service Line | Connectors | Connectors Load | Dimensions (in.) | | | Hub Opening | Main Breaker | No. Term. Bypass | Cover Style | Catalog Number |
|--------|--------------|--------------|--------------------|------------------|------|-----|--------------|--------------|------------------|-------------|----------------------|
| | | | | W | H | D | | | | | |
| 125 | OH/UG | #6-250 KCMIL | #2-1/0 CU, 2/0 AL | 18.5 | 17.0 | 5.1 | RX Cl. Plate | 125A inst. 5 | Horn | Ringless | LGMM0202B1125RJXB ②⑤ |
| 150 | OH/UG | #6-250 KCMIL | #1-300 KCMIL | 18.5 | 17.0 | 5.1 | RX Cl. Plate | 150A inst. 5 | Horn | Ringless | LGMM0202B1150RJXB ②⑤ |
| 200 | OH/UG | #6-250 KCMIL | #1-300 KCMIL | 18.5 | 17 | 5.1 | RX Cl. Plate | 200A inst. 5 | Horn | Ringless | LGMM0202B1200RJXB ②⑤ |
| 100 | OH | #14-2/0 | #6-350 KCMIL | 8.0 | 28.5 | 4.5 | RX Opening | 125A Prov.4 | Horn | Ringless | UAB111-0PCH ③④ |
| 200 | OH | #6-350 KCMIL | see breaker rating | 8.0 | 28.5 | 4.5 | RX Opening | 200A inst. 4 | Horn | Ringless | UAB317-0PCH ③⑤ |
| 150 | OH/UG | #6-250 KCMIL | #1-300 KCMIL | 16.0 | 17.0 | 5.1 | RX Cl. Plate | 150A inst. 4 | None | Ring | LGMM0202B1150 |
| 200 | OH/UG | #6-250 KCMIL | #1-300 KCMIL | 16.0 | 17.0 | 5.1 | RX Cl. Plate | 200A inst. 4 | None | Ring | LGMM0202B1200 |

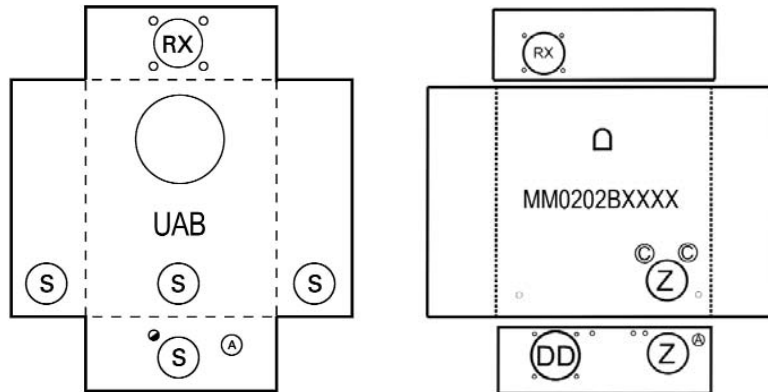
- ① All units are UL listed.
- ② 5th terminal factory installed
- ③ 5th terminal for field installation: 659-0121.
- ④ UAB111-0PCH has a provision for a 125 amp max. circuit breaker. See breaker table for details.
- ⑤ Breaker factory installed. See breaker table for replacement circuit breakers.

Breaker Table

| Amps | Circuit Breaker |
|--------------------|-----------------|
| 100 | Q2100 |
| 125 | Q2125 |
| 150 | QN2150 |
| 200 | QN2200 |
| UAB317 only | |
| 200 | QJ22B200 |



UAB317-0PCH



KNOCKOUTS (inches):

| | |
|-----|---------------------------|
| ●: | 1/4 |
| A: | 1/2 |
| C: | 1/2, 3/4, 1 |
| S: | 1, 1-1/4, 1-1/2, 2, 2-1/2 |
| Z: | 1-1/2, 2, 2-1/2 |
| DD: | 1-1/4, 1-1/2, 2, 2-1/2, 3 |
| RX: | ∅2.750 HUB OP |



100A/200A Meter Mounting Equipment, Pedestal, Residential ①②

4 or 5 Terminal for 1 Phase, 3 Wire

| Amp Rating | Service | Connectors Line | Connectors Load | Dimensions (in.) | | | Main Breaker | Bypass ② | No. of Positions | Catalog Number |
|---|---------|-----------------|-----------------|------------------|------|-----|-------------------|----------|------------------|----------------|
| W | H | D | | | | | | | | |
| <i>Approved for Wisconsin Electric Power Co, Madison Gas & Electric, and Wisconsin Power & Light (Alliant Energy)</i> | | | | | | | | | | |
| 100/200 | UG | #6-350 kcmil | #6-350 kcmil | 8.0 | 64.5 | 4.5 | none | Horn | 1 | UAP317-PPWI |
| 100/200 | UG | #6-350 kcmil | #6-350 kcmil | 8.0 | 64.5 | 4.5 | 200 amp provision | Horn | 1 | UAPB317-PPWI③ |
| 100/200 | UG | #6-350 kcmil | #6-350 kcmil | 8.9 | 74.0 | 4.8 | none | Horn | 2 | UAP2317-PPWI |

① Pedestals are UL listed.

② 5th terminal kit for field installation: H659-0121.

③ UAPB317-PPWI has a provision for a 100-200 amp circuit breaker. See breaker table for details.

Breaker Table

| Amps | Circuit Breaker |
|------|-----------------|
| 100 | Q2100 |
| 125 | Q2125 |
| 150 | Q2150B |
| 200 | Q2200B |

1 Gang Pedestal Accessories

| Item | Catalog Number |
|---|----------------|
| Bottom plate for free standing installation | 5007714 |
| 15" Extension Kit | 5007718 |
| 30" Extension Kit | 5007725 |

2 Gang Pedestal Accessories

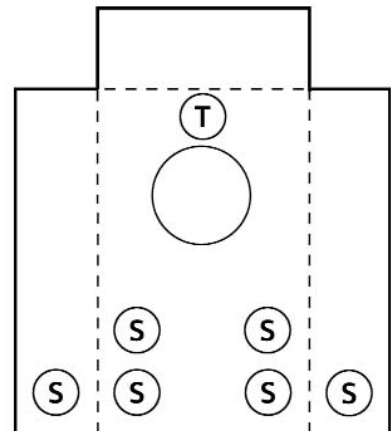
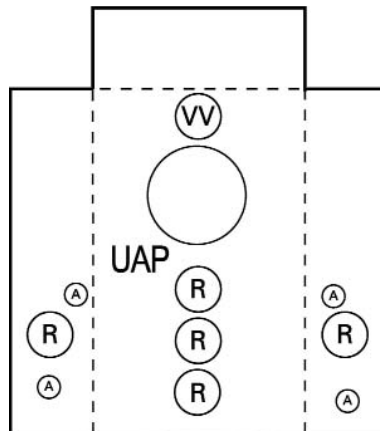
| Item | Catalog Number |
|-------------------|----------------|
| 15" Extension Kit | 5007715 |
| Stabilizer | 5007716 |



UAPB317-PPCH



UAP317-PPWI



KNOCKOUTS (inches):

- A: 1/2
- R: 1, 1-1/4, 1-1/2, 2
- S: 1, 1-1/4, 1-1/2, 2, 2-1/2
- T: 1-1/4
- VV: 2



200A/320A Continuous Meter Mounting Equipment, Pedestal, Type HQ Residential/Commercial/Industrial ①②③

4 Terminal for 1 Phase, 3 Wire • 5 Terminal for 3 Phase, 3 Wire • 7 Terminal for 3 Phase, 4 Wire

| Amp Rating | Type | Service | Connectors Line | Connectors Load | Dimensions (in.) | | | Breaker | No. of Positions | Main Bypass ② | Catalog Number |
|---|---------|---------|-----------------|--------------------|------------------|------|-----|----------|------------------|---------------|----------------|
| | | | | | W | H | D | | | | |
| 320 | HQ-4SPB | UG | (2)#6-350 kcmil | see breaker rating | 13.0 | 56.0 | 5.0 | 2-200amp | 1 | Lever | 47604PB-9CH ⑤ |
| <i>Approved for Wisconsin Public Service, Wisconsin Electric Power Co, Xcel Energy, and Wisconsin Power & Light (Alliant Energy)</i> | | | | | | | | | | | |
| 200 | HQ-5P | UG | #6-350 kcmil | #6-350 kcmil | 11.0 | 56.0 | 6.0 | none | 1 | Lever | 40405P-9WI ④ |
| 200 | HQ5P2 | UG | 3/8-24 stud | 3/8-24 stud | 9.8 | 8.0 | 6.5 | none | 2 | Lever | 404052P-936 ⑦ |
| 200 | HQ-7P | UG | #6-350 kcmil | #6-350 kcmil | 11.0 | 56.0 | 6.0 | none | 1 | Lever | 40407P-9WI |
| <i>Approved for Wisconsin Public Service, Wisconsin Electric Power Co, Madison Gas & Electric, and Wisconsin Power & Light (Alliant Energy)</i> | | | | | | | | | | | |
| 320 | HQ-4SP | UG | (2)#6-350 kcmil | (2)#6-350 kcmil | 13.0 | 56.0 | 5.0 | none | 1 | Lever | 47604P-9WI ④ |

- ① Pedestals are UL listed.
- ② Bypass mechanism is lever-operated, jaw pressure release with 100% bypass capacity.
- ③ These devices are not rated for use with disconnect sleeves
- ④ HQ-5 for 3 wire service only. Includes center phase disconnect. 5th terminal in 9 o'clock position.
- ⑤ (2) Siemens type QJ breakers installed.
- ⑥ Includes H59676 anti-inversion clip. Use H60162 line lugs for Wisconsin Power & Light.
- ⑦ No knockouts in enclosure.

Accessories

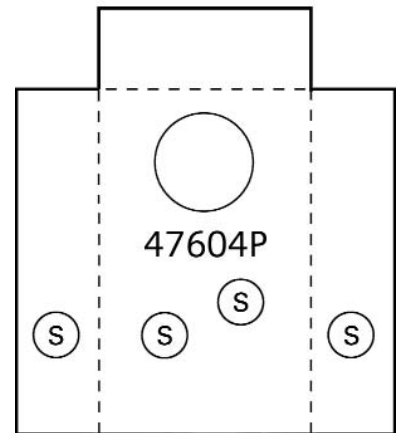
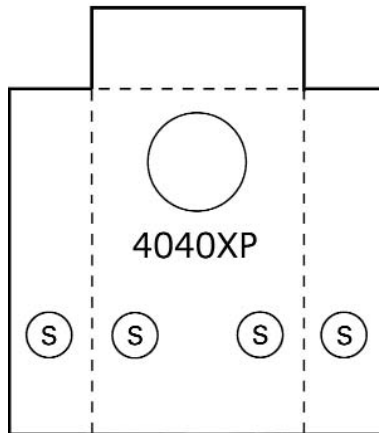
| Item | Catalog Number |
|------------------------|----------------|
| Extension Kit for 200A | 5007720 |
| Extension Kit for 320A | 5007719 |



HQ-7P



HQ-4SP



KNOCKOUTS (inches):

S: 1, 1-1/4, 1-1/2, 2, 2-1/2



400A Meter Mounting Equipment, Type K4UT, Residential/Commercial ①

4 Terminal for 1 Phase, 3 Wire

| Cont./Max Amp Rating | Type | Service | Connectors Line | Connectors Load | Dimensions (in.) | | | Hub Opening | Bypass ② | Catalog Number |
|--|------|---------|--------------------|--------------------|------------------|------|-----|----------------|----------|-------------------|
| | | | | | W | H | D | | | |
| <i>Approved for Wisconsin Public Service</i> | | | | | | | | | | |
| 400/400 | K4UT | OH/UG | (2) #6-350 kcmil | (2) #6-350 kcmil | 18.0 | 36.0 | 6.1 | HD Cl. Plate | H56495 | 9810-8502 |
| 400/400 | K4UT | OH/UG | 3/8-24 Stud | 3/8-24 Stud | 18.0 | 36.0 | 6.1 | HD Cl. Plate | H56495 | 9810-8507 |

① All units are UL listed.

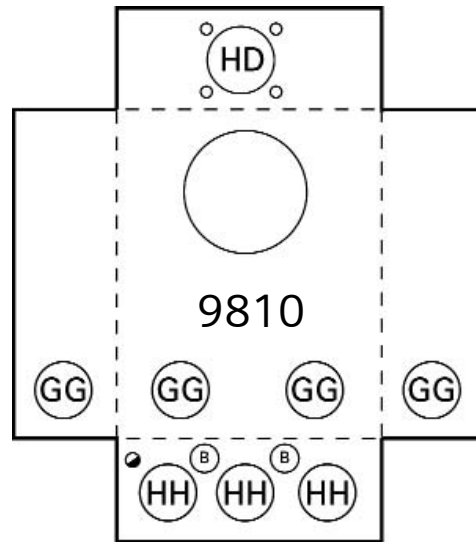
② Optional Manual Bypass H56495 available, normally for utility use only - 2 required.

Included Lugs

| Lug Position | Parallel Catalog No. |
|--------------|-------------------------|
| Line | H56427 |
| Load | H56425 |
| Neutral | (1) H56426 |



9810-8507



KNOCKOUTS (inches):

| | |
|-----|--------------------|
| B: | 1/2, 3/4 |
| GG: | 2-1/2, 3, 3-1/2 |
| HH: | 2-1/2, 3, 3-1/2, 4 |
| HD: | Ø4.281 HUB OP |



400A/480A Meter Mounting Equipment, Type K-7, Residential/Commercial/Industrial ① 7 Terminal for Polyphase, 3 or 4 Wire, Wye or Delta

| Cont./Max Amp Rating | Type | Service | Connectors Line | Connectors Load | Dimensions (in.) | | | Hub Opening | Bypass ② | Enclosure Material | Catalog Number |
|--|------|---------|--------------------|--------------------|------------------|----|---|----------------|----------|-----------------------|-------------------|
| | | | | | W | H | D | | | | |
| 400/400 | K7T | OH/UG | 1/2-20 Stud | 1/2-20 Stud | 20 | 43 | 6 | HD Cl. Plate | 58888 | Steel | 9817-8512 |
| Approved for Wisconsin Public Service | | | | | | | | | | | |
| 400/400 | K7 | OH/UG | (2)#6-350 kcmil | (2)#6-350 kcmil | 20 | 34 | 6 | HD Cl. Plate | 58888 | Steel | 9817-8013 |
| 400/400 | K7 | OH/UG | 1/2-20 Stud | 1/2-20 Stud | 20 | 34 | 6 | HD Cl. Plate | 58888 | Steel | 9817-8031 |

① All units are UL listed.

② Optional Manual Bypass H58888 available, normally for utility use only (3 required).

Recommended Lugs for 9817-8512

| Lug Position | Single OH Lugs | | Parallel UG Lugs | |
|--------------|-------------------------|------|-------------------------|------|
| | Catalog No. | Type | Catalog No. | Type |
| Line | H56732 or H56732-M Std. | | H58853 or H56427-M S.E. | |
| Load | H56732 or H56732-M Std. | | H56732 or H56732-M Std. | |
| Neutral | H56732 or H56732-M Std. | | H56732 or H56732-M Std. | |

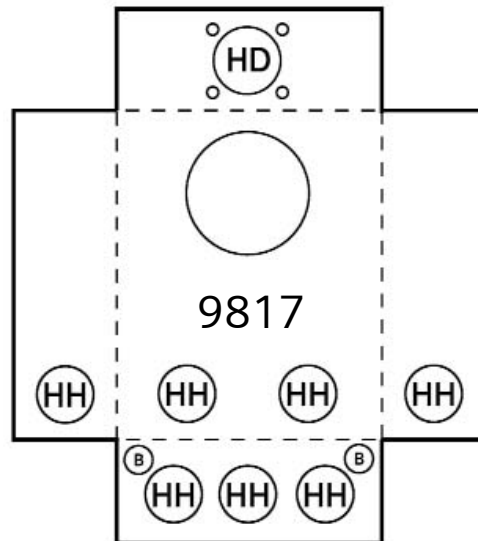
Std.: In-line lugs for end entry.

S.E.: Side entry lugs for 90° installation.

Residential/Commercial/Industrial
400 Amp - 7 Jaw - Ringless



9817-8031



KNOCKOUTS (inches):

| | |
|-----|--------------------|
| B: | 1/2, 3/4 |
| HH: | 2-1/2, 3, 3-1/2, 4 |
| HD: | Ø4.281 HUB OP |



Air Conditioning Disconnects

Fused[®] and Non-Fused

Features

Flexibility

- 30-60 amperes
- 240 volts A.C.
- Padlock provisions
- Horsepower rated
- 10,000 A.I.C.
- New models available with internal GFCI receptacle
- Removable Door
- Ample Wiring Space

Rugged Durability

- Noryl[®] thermoplastic and powder coated G90 steel enclosure is corrosion resistant and extremely durable giving long maintenance free service
- Copper conductors
- Raised mounting embosses



Steel AC Disconnects

| Ampere Rating | Disconnect Type | Catalog No. | Horse Power Rating | Dimensions (inches) | | |
|---------------|----------------------|-------------|--------------------|---------------------|-----|-----|
| | | | | H | W | D |
| 30 | Fused Pullout | LF2030 | 3 | 7.3 | 5.0 | 2.1 |
| 60 | Fused Pullout | LF2060 | 10 | 8.0 | 5.0 | 2.1 |
| 60 | Non-Fused Pullout | LN2060 | 10 | 7.3 | 5.0 | 2.1 |
| 60 | Non-Automatic Switch | LNAS2060 | 10 | 7.3 | 5.0 | 2.1 |



Plastic AC Disconnects

| Ampere Rating | Disconnect Type | Catalog No. | Horse Power Rating | Dimensions (inches) | | |
|---------------|-------------------|-------------|--------------------|---------------------|-----|-----|
| | | | | H | W | D |
| 30 | Fused Pullout | LF2030PL | 3 | 8.0 | 5.3 | 3.1 |
| 60 | Fused Pullout | LF2060PL | 10 | 8.0 | 5.3 | 3.1 |
| 60 | Non-Fused Pullout | LN2060PL | 10 | 7.3 | 5.0 | 2.1 |



Steel AC Disconnects with 15 Amp GFCI Receptacle

| Ampere Rating | Disconnect Type | Catalog No. | Horse Power Rating | Dimensions (inches) | | |
|---------------|----------------------|--------------|--------------------|---------------------|-----|-----|
| | | | | H | W | D |
| 30 | Fused Pullout | LF2030GFCI | 3 | 9.0 | 6.1 | 5.1 |
| 60 | Fused Pullout | LF2060GFCI | 10 | 9.0 | 6.1 | 5.1 |
| 60 | Non-Fused Pullout | LN2060GFCI | 10 | 7.1 | 5.8 | 5.1 |
| 60 | Non-Automatic Switch | LNAS2060GFCI | 10 | 7.1 | 5.8 | 5.1 |

Wire Range Table

| Connector | Copper | | Aluminum | |
|--------------|--------|----------|----------|----------|
| | Solid | Stranded | Solid | Stranded |
| Line | #14-8 | #14-3 | #12-8 | #12-3 |
| Load | #14-8 | #14-3 | #12-8 | #12-3 |
| Neutral | #12-8 | #12-2 | #12-8 | #12-2 |
| Equip. Grnd. | #12-8 | #12-2 | #12-8 | #12-2 |



Spa Panel

For use as Spa/Hot Tub service disconnect

| 2-Pole GFCI Breaker | Dimensions (inches) | | | Catalog Number |
|------------------------|---------------------|------|------|-------------------|
| | H | W | D | |
| 50A | 12.25 | 6.00 | 4.50 | LGSPA50 |
| 60A | 12.25 | 6.00 | 4.50 | LGSPA60 |



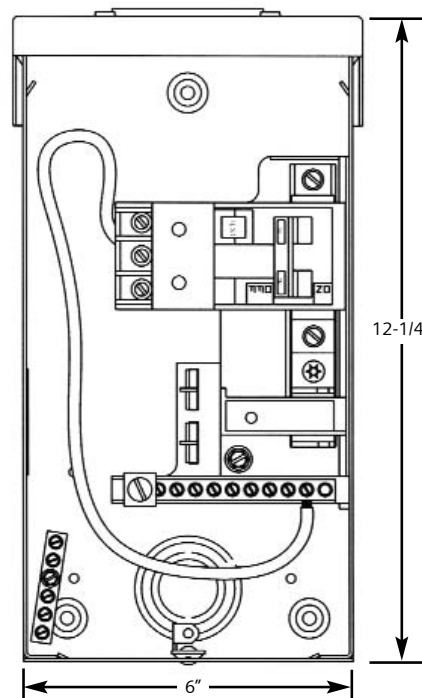
Dead Front



Enclosure



Hub Cover Plate



Features and Benefits

- UL Listed
- Factory installed, 2-pole 50A GFCI breaker for 240V ground fault protection
- NEMA Type 3R outdoor enclosure
- 2 extra spaces (4 circuits maximum) for additional circuit breakers
- 125 Amp rated interior
- Factory installed 5 position ground bar
- Closure plate included
- Compact enclosure size
- Convenient standard package of 1
- Uses reliable Siemens circuit breakers



Connector Lugs

| | | | |
|--|--|--|---|
|  H55890 #6-350 KCMIL 3/8" Stud |  H55890-1 #6-350 KCMIL 3/8" Stud |  H56734 #6-250 KCMIL 1/2" Stud |  H37892 #4-500 KCMIL 1/2" Stud |
|  H57606-K #6-350 KCMIL 3/8" Stud |  H56476 #3/0-800 KCMIL 1/2" Stud |  H60162 (1) #4-600 KCMIL 1/2" Stud |  H61300 (2) 1/0-250 KCMIL 1/2" Stud |
|  H58022 (2) #6-250 KCMIL |  H56732 (2) #4-350 KCMIL 1/2" Stud |  H56732-1 (2) #4-350 KCMIL 1/2" Stud |  H56732-2 (2) #4-350 KCMIL 1/2" Stud |
|  H56732-M (2) #4-500 KCMIL 1/2" Stud |  H68752-1 (3) #6-250 KCMIL 1/2" Stud |  H56426 (4) #6-350 KCMIL 1/2" Stud |  H56477 3/0-800 KCMIL 1/2" Stud |
|  H56425 (2) #6-350 KCMIL 1/2" Stud |  H56425-M (2) #4-500 KCMIL 1/2" Stud |  H58852 3/0-800 KCMIL 1/2" Stud |  H56733 3/0-800 KCMIL 1/2" Stud |
|  H56427 (2) #6-350 KCMIL 1/2" Stud |  H56427-M (2) #4-500 KCMIL 1/2" Stud |  H58853 (2) #6-350 KCMIL 1/2" Stud |  H59299-1 1/2" Stud |



Connector Lugs Lug Extender

Pressure type lugs for Landis & Gyr's stud type meter mounting devices are made of 6061-T6 aluminum to provide high strength and high conductivity. All lugs are tin-plated to ensure low contact resistance and to reduce corrosion.

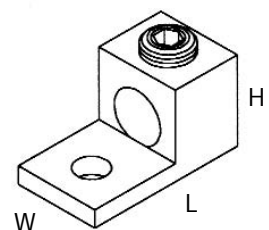
Allen or hex head pressure screws are furnished to provide excellent conductor spread for maximum binding action with the lug. All Landis & Gyr lugs are listed with Underwriters Laboratories.

Pressure Lug Connectors For Meter Mounting Devices

| Device Type | Anti-Rotation Feature | Conductor Size | Stud Opening | Pressure Screw Head | Dimensions* (inches) | | | Landis & Gyr Catalog Number |
|----------------|-----------------------|------------------------|--------------|---------------------|----------------------|---------|---------|-----------------------------|
| | | | | | L | W | H | |
| HQ-4S | No | #6-350 MCM | 13/32" | 9/16" Hex | 2-1/4 | 1-1/8 | 1-1/4 | H55890 |
| HQ-5 S | No | #6-350 MCM | 13/32" | 5/16" Allen | 2-1/4 | 1-1/8 | 1-1/4 | H55890-1 |
| HQ-7S | No | #6-350 MCM | 13/32" | 3/8" Allen | 2-1/4 | 1-1/8 | 1-1/4 | H57606-K |
| HQ-4D | No | (2) #6-250 MCM | 13/32" | 5/16" Allen | 2-3/16 | 1-5/8 | 1-3/16 | H58022 |
| HQ-5DM | Yes | #4-500 MCM | 9/16" | 3/8" Allen | 2-13/16 | 1-1/2 | 1-9/16 | H37892 |
| HQ-7D | | (1) #4-600 MCM | 9/16" | 1/2" Allen | 2-13/16 | 1-3/8 | 1-13/16 | H60162 |
| HQ-7DF | No | or (2) #1/0-250 MCM | 9/16" | 1/2" Allen | 2-13/16 | 1-3/8 | 1-13/16 | H61300 |
| K-4,5,7 | No | (2) #6-350 MCM | 9/16" | 5/16" Allen | 2-7/8 | 1-57/64 | 1-1/4 | H56425 |
| K-4,5,7 | No | (2) #4-500 MCM | 9/16" | 3/8" Allen | 2-13/16 | 2-1/16 | 1-9/16 | H56425-M |
| K-4 | No | (4) #6-350 MCM | 9/16" | 5/16" Allen | 2-7/8 | 3-15/16 | 1-1/4 | H56426 |
| K-4,5,7 | Yes | (2) #6-350 MCM | 9/16" | 5/16" Allen | 4-15/16 | 1-1/8 | 2-1/16 | H56427 |
| K-4,5,7 | Yes | (2) #2-500 MCM | 9/16" | 3/8" Allen | 4-1/4 | 1-1/8 | 1-13/16 | H56427-M |
| K-5,7 | Yes | #3/0-800 MCM | 9/16" | 1/2" Allen | 3-1/4 | 1-5/16 | 1-13/16 | H56476 |
| K-4,5,7 | Yes | #3/0-800 MCM | 9/16" | 1/2" Allen | 3-1/4 | 1-5/16 | 1-13/16 | H56477 |
| K-5,7 | No | (2) #4-500 MCM | 9/16" | 3/8" Allen | 2-13/16 | 2-5/32 | 1-9/16 | H56490 |
| K-5,7 | Yes | (2) #4-350 MCM | 9/16" | 5/16" Allen | 2-7/8 | 1-59/64 | 1-1/4 | H56732 |
| K-5,7 | No | (2) #4-350 MCM | 9/16" | 5/16" Allen | 2-7/8 | 1-59/64 | 1-1/4 | H56732-1 |
| K-5,7 | Yes | (2) #4-500 MCM | 9/16" | 3/8" Allen | 2-13/16 | 2-5/32 | 1-13/16 | H56732-M |
| K-4,5,7 | Yes | #3/0-800 MCM | 9/16" | 1/2" Allen | 4-3/16 | 1-3/4 | 2-3/8 | H56733 |
| K-4,5,7 (Grd.) | No | #6-250 MCM | 9/16" | 5/16" Allen | 2-9/16 | 1-9/32 | 1-3/16 | H56734 |
| K-4,5,7 | Yes | #3/0-800 MCM | 9/16" | 1/2" Allen | 3-15/16 | 1-3/4 | 1-13/16 | H58852 |
| K-4,5,7 | Yes | (2) #6-350 MCM | 9/16" | 5/16" Allen | 3-15/16 | 1-1/8 | 1-1/2 | H58853 |
| K-4,5,7 | Yes | (3) #6-250 MCM | 9/16" | 5/16" Allen | 2-7/8 | 2-31/64 | 1-7/16 | H68752-1 |
| K-4 extender | Yes | 1/2-20 x 1-7/8" Stud | 9/16" | None | 4-1/4 | 1-1/4 | 2-3/8 | H59299-1 |

Lug Extender

| Device Type | Stud Opening | Stud Size | Dimensions (inches) | | | Landis & Gyr Catalog Number |
|-------------|--------------|-----------------|---------------------|-------|-------|-----------------------------|
| | | | W | H | D | |
| K-4 | 9/16" | 1/2-20 x 1-7/8" | 4-1/4 | 1-1/4 | 2-3/8 | H59299-1** |





* Dimensions do not include height of pressure screw with conductor installed.
 ** Includes nut and washer assembly and washer.






Accessories

Removable Hub Kits

| | Conduit Size (inches) | Catalog Number |
|--|---------------------------|----------------|
|  Removable Hub | RX Type Hubs Small | |
| | 1 | H38596-2 |
| | 1-1/4 | H38597-2 |
| | 1-1/2 | H38598-2 |
| | 2 | H38599-2 |
| | 2-1/2 | H38600-2 |
|  Cover Plate | HD Type Hubs Large | |
| | 3 | H56856-2 |
| | 3-1/2 | H56857-2 |
| | 4 | H56858-2 |
| | Cover Plate - Steel | H56933 |
| | Cover Plate - Aluminum | H56933-1 |

Sealing Rings

| | Description | Catalog Number |
|--|---|----------------|
|  | Stainless Steel Snap Type | H54602 |
|  | Stainless Steel Screw Type *Requires 9738-8003 Locking Clip | 9738-8001* |
|  | Stainless Steel Screw Type | 9738-8002 |

Accessories

| | Description | Catalog Number |
|---|---|----------------|
|  | Insulated 5th Terminal Kit - Type AS, AT only | H659-0120 |
|  | Grounded 5th Terminal Kit - Type AS, AT only | H659-0121 |
|  | HQ 5th Terminal Kit - 6:00 | H35815-3 |
| | HQ 5th Terminal Kit - 9:00 | H35815-2 |
|  | Large to Small Adaptor - Steel HD to RX | H9747-1113 |
| | Large to Small Adaptor - Aluminum HD to RX | H9747-1112 |
| | Black Plastic Meter Opening Cover | H39968 |
| | Clear Plastic Meter Opening Cover (with plug-in feet) | H659-0162 |
| | Solid Sliding Cover for K4 Sockets | HA-300579-3 |
| | Solid Sliding Cover for K7 Sockets | HA-300529-4 |

| | Description | Catalog Number |
|--|--|----------------|
|  | HQ Isolated Neutral Kit *Includes Neutral and Isolation Block | H64685-1* |
|  | Neutral Isolation Kit for HQ *Isolates Existing Neutral | H64690-1* |
|  | Insulated Jumper | H36479 |
| | Insulated Neutral for K7 Sockets | H69685-1 |
| | Add-on Grounding Lug for HQ/HQU | H55303 |



**Repair Parts
Terms Of Sale**

Repair Parts

| Catalog Number | Block Assembly | Neutral Assembly | Connector Screw Assembly | Neutral Screw Assembly |
|-----------------------|----------------|------------------|---------------------------|------------------------|
| UAT111-0G | 5005800H | 5005000-H | 1012013 (Screw Only) | 1012013 (Screw Only) |
| UAT317-0G | 5015830-2 | 5005070-3 | 200007-1 (Screw Only) | 200009-1 (Screw Only) |
| UAT417-0G | 5005830-2 | 5005070-3 | 200007-1 | 200009-1 |
| UAT417-PG | 5005830-2 | 5005070-3 | 200007-1 | 200009-1 |
| UAT417-XG | 5005830-2 | 5005070-3 | 200007-1 | 200009-1 |
| All 200A Gang Sockets | | | (Load Side Only) 200008-1 | 200009-1 |

Transportation Charges: Prices listed are F.O.B. factory with freight prepaid and allowed on all shipments of orders of \$1,000 net or more for single shipments to one location.

Minimum Billing: \$100 net plus transportation charges.

Cancellation: Orders accepted by the factory can be cancelled only with the factory's consent and upon payment to the seller of reasonable charges incurred by the seller which will indemnify the seller against loss.

Returns: Goods may not be returned to Landis & Gyr without written authorization from the factory. A minimum 20% restocking charge will be applicable on all returned goods. Credit will be given only for current production items in unopened cartons. All transportation charges paid by Landis & Gyr will be deducted from such credit.

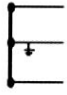


Terms: Standard/Stock Products:

2% 10th net 25th for invoices dated the 1st through the 15th of the month.

2% 25th net 10th for invoices dated the 16th through the 31st of the month.



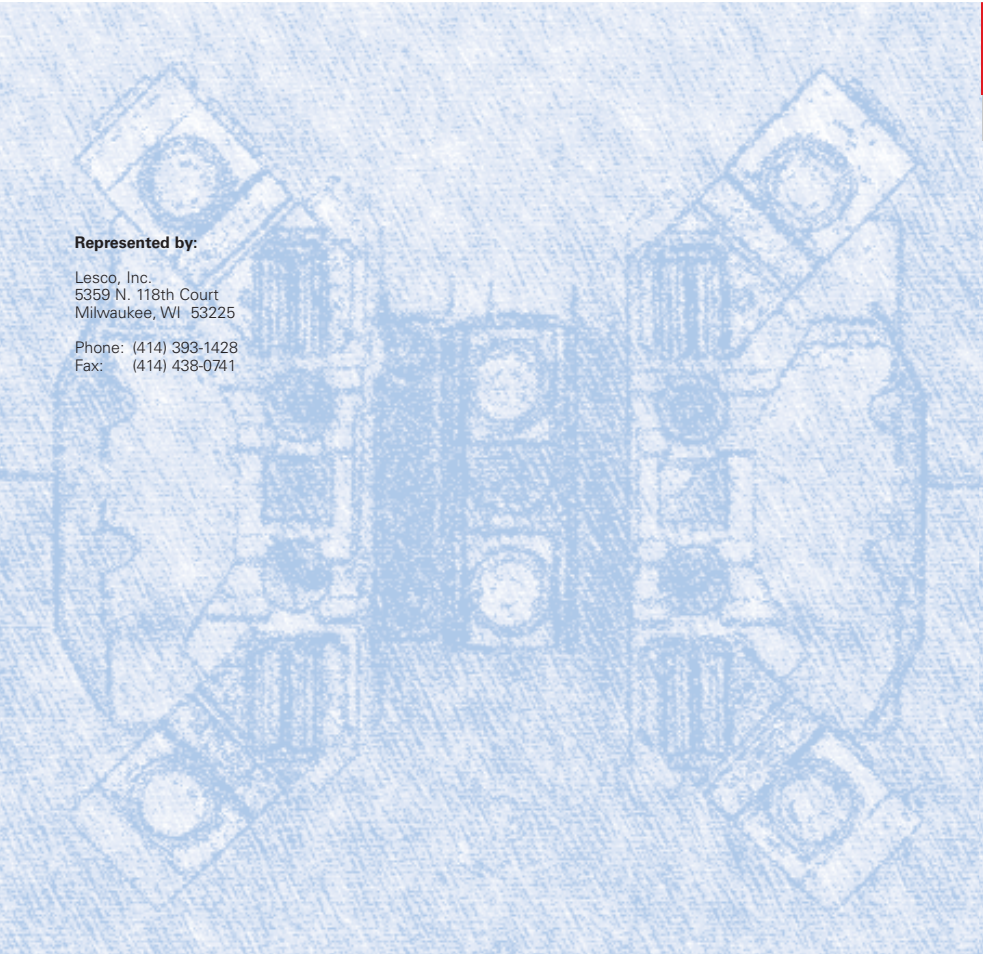
Meter Mounting Device Applications

| Electrical Service | Service Type | Meter Form | Socket Type | Standard Socket Catalog Number | Product Schedule |
|--|---|---------------|--------------------|--------------------------------|--|
| 1-Phase  | Self-contained, 3 wire | 2S | 4 jaw 100A | AT-1 | 402, 415, 453 |
| | | | 4 jaw 200A | AT-3, AT-4, CQ-4, HQ-4 | 410, 411, 412, 415, 417 419, 425, 453, 456, 458 |
| | Self-contained, bolt-in Transformer-rated, 2 wire Transformer-rated, 3 wire | 2SE | 4 jaw 320A | HQ-4S, HQ-4D | 426, 430, 435 |
| | | 2K | K-4 400/480A | K-4, K-4UT | 440 |
| | | 3SI | 5 jaw 20A | HQ-6T, HQ-6TS, PTS-6 | 469, 470, 465 |
| 4SI | 6 jaw 20A | HQ-6T, HQ-6TS | 469, 470, 465 | | |
| 3-Phase 3-Wire or Network  | Self-contained | 12S | 5 jaw 100A | CQ-5, HQ-5 | 417, 419, 421, 425 |
| | | 12S | 5 jaw 200A | CQ-5, HQ-5 | 417, 419, 421, 425 |
| | | 12SE | 5 jaw 320A | HQ-5SWT, HQ-5D | 430, 435 |
| | Self-contained, bolt-in | 12K | K-5 480/600A | K-5 | 447 |
| | Transformer-rated | 5S | 8 jaw 20A | HQ-8T, HQ-8TS, PTS-8 | 469, 470, 465 |
| 3-Phase 4-Wire  Wye or Delta | Self-contained | 14S | 7 jaw 100/200/320A | CQ-7, HQ-7 | 417, 419, 425, 426, 435 |
| | | 15S | | | |
| | | 16S | | | |
| | Self-contained, bolt-in | 14K | K-7 480/600A | K-7, K-7T | 447 |
| | | 15K | | | |
| | | 16K | | | |
| | Transformer-rated | 6S | 13 jaw 20A | HQ-13T, HQ-13TS, PTS-13 | 469, 470, 465 |
| | | 8S | | | |
| | | 9S | | | |

*Meter Form also applies to comparable types of mechanical demand or electronic meters.

! Sockets to be used with instrument transformer installations should, in general, be equipped with circuit closing devices.


Care should be taken when using sockets without circuit closing devices. (Check current transformer specifications).



Represented by:

Lesco, Inc.
5359 N. 118th Court
Milwaukee, WI 53225

Phone: (414) 393-1428
Fax: (414) 438-0741



Landis & Gyr Meter Mounting Devices

Siemens Energy & Automation, Inc.
3333 Old Milton Parkway
Alpharetta, GA 30005

© 2005 Siemens Energy & Automation, Inc. All Rights Reserved.

Siemens is a registered trademark of Siemens AG. Product names mentioned may be trademarks or registered trademarks of their respective companies. Specifications are subject to change without notice.