

MLFB-Ordering data 1FG1102-9RD06-2AR1-Z
D01+H1G+K12

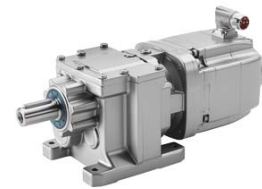


Figure similar

Client order no. :

Order no. :

Offer no. :

Remarks :

Item no. :

Consignment no. :

Project :

Gearbox data

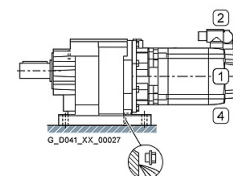
Gear box type	Z29	Radial force maximum	2090 N
Gearbox basic type	Helical geared	Max. permissible radial force with Mmax	1950 N
Gearbox size	29	Moment of inertia	0.16 kgcm ²
Transmission stages	2	Torsional stiffness	9 Nm/°
Transmission (ratio)	17.67	Efficiency	0.94
Gear number relation	972/55	Mounting position	M1
Output moment maximum (short-time)	84 Nm	Mounting type	Foot-mounted
max. input speed (briefly)	4500 rpm	Output shaft version	Solid shaft without feather key
Output speed short-time	255 rpm	Output shaft dimension	VG25x50 mm
Emergency off output moment (1000 cycles)	235 Nm	Gearbox flange diameter	-/-
		Output shaft bearing	No
		Figure 2 torque support	-

General tech. specifications

Degree of protection	IP65
Color of the housing	Standard painting (Anthracite RAL 7016)
Specification	CE / UL / CSA / EAC / cRUus
Net weight	8.00 kg
1m-sound pressure level L _{pA} (ToI.+3dB(A))	65
Plug position	top (default) (2)
Adapter flange position	top (default) (2)

Lubrication and sealing

Gear oil	Poly-alpha-olefin oil CLP ISO PAO VG220
Output shaft sealing	Standard
Oil charge	0.20 l



MLFB-Ordering data 1FG1102-9RD06-2AR1-Z
D01+H1G+K12

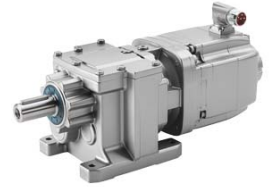


Figure similar

Motor data		Limiting data	
Motor type	Permanent-magnet synchronous motor	Maximum speed (short-time)	9000 rpm
Motor type	Compact	Maximum torque	5.10 Nm
DC-link voltage, max.	510...720V	Motor current short term	7.7 A
Shaft height	48 mm	Optimum operating point	
Cooling	Natural cooling	Optimum speed	6000 rpm
Rated speed	6000 rpm	Optimum power	0.60 kW
Rated torque (100K)	0.96 Nm	Recommended Motor Module	
Rated power	0.60 kW	Rated inverter current	3.0 A
Rated current (100K)	1.63 A	Maximum inverter current	9.0 A
Static torque	1.47 Nm	Maximum torque	5.1 Nm
Static current	2.25 A		
Moment of inertia	1.60 kgcm ²		
Efficiency η	87 %		
Temperature monitoring	Pt1000 temperature sensor		
Connector size	1		
Encoder system	Encoder AM20DQI: absolute encoder 20 bits (resolution 1048576, encoder-internal 512 S/R) + 12 bits multi-turn (traversing range 4096 revolutions)		

Info servo geared motor

Outside the standard temperature range of -10 to +40 °C, further selectable options must be observed, in addition to the lubricant selection.

Further, you have to check the suitability of the components and options used for the requested temperature range.

MLFB-Ordering data 1FG1102-9RD06-2AR1-Z
D01+H1G+K12

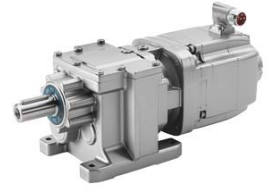


Figure similar

Options

D01	M1 for helical and parallel shaft gearboxes
H1G	Solid shaft without feather key
K12	Poly-alpha-olefin oil CLP ISO PAO VG220

Standards

Compliance with standards CE / UL / CSA / EAC / cRUus

CE marking EN 60034