

30mm Command/52, Chrome Finish Heavy Duty, Watertight/Oiltight Complete Metal Unit Illuminated Push-Pull Operator Full Voltage, 24V AC/DC LED Lamp Mushroom Head Cap Small 1 3/4" (44.5 mm) Plastic, Red 3 Position Pull-Momentary/ Push-Maintained 1 N.C.+1 N.C. Extra Late Break Heavy Duty Contacts, A600/P600 UL Listed, CSA Certified NEMA 1,3,3R,4,4X,12,13 & Automotive Standards

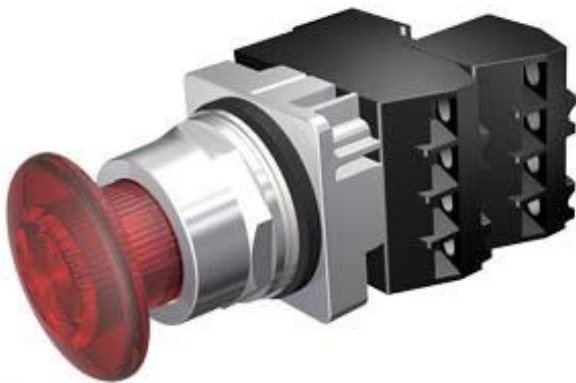


Figure similar

| Enclosure | |
|---|---------------------------|
| Number of command points | 1 |
| Delivery state | |
| • as a kit | No |
| Actuator | |
| Product extension optional Light source | Yes |
| Material of the actuating element | plastic |
| Number of contact modules | 2 |
| Type of unlocking device | pull-to-unlatch mechanism |
| Number of switching positions | 3 |
| Front ring | |
| Product component front ring | Yes |
| Design of the front ring | standard |
| Material of the front ring | metal |
| Contact block/ lampholder | |
| Number of lampholders | 1 |

| Display | |
|---|----------------------|
| Number of LED modules | 1 |
| General technical data | |
| Product function | |
| • positive opening | No |
| Product component | |
| • lamp transformer | No |
| • Light source | Yes |
| Insulation voltage | |
| • rated value | 600 V |
| Type of voltage | |
| • of the operating voltage | AC/DC |
| • of the input voltage | AC/DC |
| Surge voltage resistance rated value | 4 kV |
| Protection class IP | IP66 |
| • of the terminal | IP20 |
| Thermal current | 10 A |
| Supply voltage | |
| Type of voltage of the supply voltage | |
| • of the light source | AC/DC |
| Supply voltage of the light source at AC | |
| • at 60 Hz rated value | 28 ... 24 V |
| Supply voltage of the light source at DC | |
| • rated value | 28 ... 24 V |
| Auxiliary circuit | |
| Number of NC contacts for auxiliary contacts | 2 |
| Number of NO contacts for auxiliary contacts | 0 |
| Operating current at AC-15 | |
| • at 110 V rated value | 60 A |
| • at 230 V rated value | 30 A |
| • at 400 V rated value | 15 A |
| • at 500 V rated value | 12 A |
| Connections/ Terminals | |
| Type of electrical connection | screw-type terminals |
| Tightening torque of the screws in the bracket | 20 N·m |
| Tightening torque [lbf·in] | |
| • with screw-type terminals | 8 ... 8 lbf·in |
| Lamp | |
| Color of the light source | red |
| Ambient conditions | |

Ambient temperature

- during operation -35 ... +70 °C
- during storage -40 ... +85 °C

Installation/ mounting/ dimensions

Shape of the installation opening round

Certificates/ approvals

Further information

Information- and Downloadcenter (Catalogs, Brochures,...)

<https://www.siemens.com/ic10>

Industry Mall (Online ordering system)

<https://mall.industry.siemens.com/mall/en/en/Catalog/product?mlfb=US2:52PP7DRUB>

Cax online generator

<http://support.automation.siemens.com/WW/CAXorder/default.aspx?lang=en&mlfb=US2:52PP7DRUB>

Service&Support (Manuals, Certificates, Characteristics, FAQs,...)

<https://support.industry.siemens.com/cs/ww/en/ps/US2:52PP7DRUB>

Image database (product images, 2D dimension drawings, 3D models, device circuit diagrams, EPLAN macros, ...)

http://www.automation.siemens.com/bilddb/cax_de.aspx?mlfb=US2:52PP7DRUB&lang=en

last modified:

02/14/2020