

# Slug-Out™ Individual Punch & Die

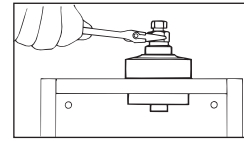
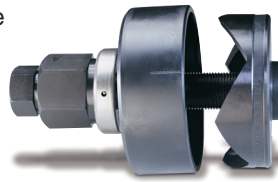
1/2" to 4" conduit size.

- A complete selection of 11 individual punch, die and drive screw sets from 1/2" - 4".
- Four-point design allows slug to drop automatically without splitting.
- Punches up to 10-gauge mild steel and 12-gauge stainless steel.

KOM300 Apart



KOM300 Assembled



Part #	Weight	Pipe Size	Hole Size	Punch #	Weight	Die #	Weight	Drive Screw #	Weight	Drive Nut #
KOS-500B	1.5 lbs	1/2"	7/8"	KP500B	.4 lb	KD500B	1 lb	KSB50B	1 lb	—
KOS-750B	1.5 lbs	3/4"	1 9/32"	KP750B	.4 lb	KD750B	1 lb	KS752B	1 lb	—
KOS-1000B	1.8 lbs	1"	1 11/32"	KP1000B	1 lb	KD1000B	1 lb	KS752B	1 lb	—
KOS-1250B	1.75 lbs	1 1/4"	1 11/16"	KP1250B	2 lbs	KD1250B	2 lbs	—	—	—
KOS-1250DS	1.8 lbs	1 1/4"	1 11/16"	KP1250B	2 lbs	KD1250B	2 lbs	KS752B	1 lb	—
KOS-1500B	1.8 lbs	1 1/2"	1 15/16"	KP1500B	2 lbs	KD1500B	2 lbs	—	—	—
KOS-1500DS	1.9 lbs	1 1/2"	1 15/16"	KP1500B	2 lbs	KD1500B	2 lbs	KS752B	1 lb	—
KOM1732	3 lbs	—	1 7/32"	KP1732B	.3 lb	KD1732B	.3 lb	KS752B	1 lb	—
KOM200	2 lbs	2"	2 3/8"	KP2000B	2 lbs	KD2000B	2 lbs	KS752B	1 lb	—
KOM250	4 lbs	2 1/2"	2 7/8"	KP2500	3 lbs	KD2500	3 lbs	KS2530	1.5 lbs	KSN2530
KOM300	5 lbs	3"	3 1/2"	KP3000	4 lbs	KD3000	4 lbs	KS2530	1.5 lbs	KSN2530
KOM350	10 lbs	3 1/2"	4"	KP3500	4 lbs	KD3500	4 lbs	KS3540	4 lbs	KSN3540
KOM400	11 lbs	4"	4 1/2"	KP4000	4 lbs	KD4000	4 lbs	KS3540	4 lbs	KSN3540
KKT316	Keyway Tool (for use with KOM1732)									

# Individual Slug-Out™ Components

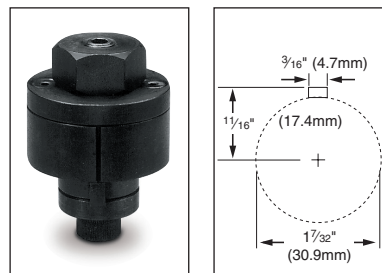
1/2" to 4" conduit size.

- Four-point design allows slug to drop automatically without splitting.
- Punches up to 10-gauge mild steel and 12-gauge stainless steel.

Part #	Description	Hole Size	Weight
KP500B	1/2" Punch	7/8"	.4 lb
KD500B	1/2" Die	7/8"	1 lb
KSB50B	Drive Screw for 1/2" Punch & Die	—	1 lb
KP750B	3/4" Punch	1 9/32"	.4 lb
KD750B	3/4" Die	1 9/32"	1 lb
KS752B	Drive Screw for 3/4" thru 2" Punch & Die	—	1 lb
KP1000B	1" Punch	1 11/32"	1 lb
KD1000B	1" Die	1 11/32"	1 lb
KP1250B	1 1/4" Punch	1 11/16"	2 lbs
KD1250B	1 1/4" Die	1 11/16"	2 lbs
KP1500B	1 1/2" Punch	1 15/16"	2 lbs
KD1500B	1 1/2" Die	1 15/16"	2 lbs
KP1732B	1 7/32" Punch	1 7/32"	2 lbs
KD1732B	1 7/32" Die	1 7/32"	2 lbs
KP2000B	2" Punch	2 3/8"	2 lbs
KD2000B	2" Die	2 3/8"	2 lbs
KP2500	2 1/2" Punch	2 7/8"	3 lbs
KD2500	2 1/2" Die	2 7/8"	3 lbs
KSN2530	Drive Screw for 2 1/2" & 3" Punch & Die	—	1.5 lbs
KP3000	3" Punch	3 1/2"	4 lbs
KD3000	3" Die	3 1/2"	4 lbs
KP3500	3 1/2" Punch	4"	4 lbs
KD3500	3 1/2" Die	4"	4 lbs
KSN3540	Drive Screw for 3 1/2" & 4" Punch & Die	—	4 lbs
KP4000	4" Punch	4 1/2"	4 lbs
KD4000	4" Die	4 1/2"	4 lbs



## KEYWAY TOOL



Punches holes for oil-tight electrical switches. Keyway tool (Part # KKT316) forms 3/16" notch in punched hole to prevent rotary movement of switch.