

Data sheet for SIMOTICS S-1FK7

MLFB-Ordering data

1FK7022-5AK21-1TB3

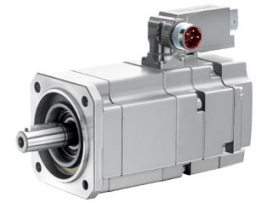


Figure similar

Client order no. :

Order no. :

Offer no. :

Remarks :

Item no. :

Consignment no. :

Project :

Engineering data

Rated speed (100 K)	6000 rpm
Number of poles	6
Rated torque (100 K)	0.6 Nm
Rated current	1.4 A
Static torque (60 K)	0.70 Nm
Static torque (100 K)	0.8 Nm
Stall current (60 K)	1.50 A
Stall current (100 K)	1.80 A
Moment of inertia	0.350 kgcm ²
Efficiency	86.0 %

Physical constants

Torque constant	0.46 Nm/A
Voltage constant at 20° C	29.0 V/1000*min ⁻¹
Winding resistance at 20° C	4.20 Ω
Rotating field inductance	9.1 mH
Electrical time constant	2.20 ms
Mechanical time constant	1.70 ms
Thermal time constant	18 min
Shaft torsional stiffness	3000 Nm/rad
Net weight of the motor	2.0 kg

Mechanical data

Motor type	Permanent-magnet synchronous motor
Motor type	Compact
Shaft height	28
Cooling	Natural cooling
Radial runout tolerance	0.035 mm
Concentricity tolerance	0.08 mm
Axial runout tolerance	0.08 mm
Vibration severity grade	Grade A
Connector size	1
Degree of protection	IP64
Design acc. to Code I	IM B5 (IM V1, IM V3)
Temperature monitoring	KTY84 temperature sensor in the stator winding
Electrical connectors	Connectors for signals and power rotatable
Color of the housing	Standard (Anthracite RAL 7016)
Holding brake	with holding brake
Shaft extension	Feather key
Encoder system	Resolver 2-pole

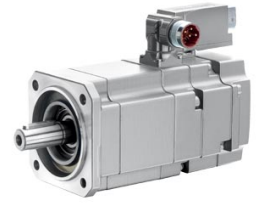


Figure similar

MLFB-Ordering data

1FK7022-5AK21-1TB3

Optimum operating point

Optimum speed	6000 rpm
Optimum power	0.4 kW

Limiting data

Max. permissible speed (mech.)	10000 rpm
Max. permissible speed (inverter)	9990 rpm
Maximum torque	3.4 Nm
Maximum current	8.0 A

Holding brake

Holding brake version	Permanent-magnet brake
Holding torque	1.0 Nm
Power supply voltage	DC 24 V \pm 10 %
Coil current	0.3 A
Opening time	30 ms
Closing time	20 ms
Highest braking work	8 J

Recommended Motor Module

Rated inverter current	2 A
Maximum inverter current	5 A
Maximum torque	2.00 Nm