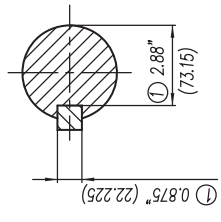


- ① Tolerancias acorde a NEMA Std.
- ② All these dimensions corresponding to assemblies and castings shall have a tolerance as per DIN standard 1686-GTB 19.
- ③ Not According to NEMA Std.



Keyseat detail
Detalle Cuñero

CERTIFIED PRINT / CERTIFICACION			
CUSTOMER/CLIENTE			
PART/ORDER NUMBER	SIZE/MOTOR CENTER		
IP	FRANK/ARK	TYPE/PRO	WVLS
			REV

Tol. in mm. acc. to Tol. en mm. según DIN-1686-GTB-19	Over/desde	To/hasta
--	18	± 4.5
	30	± 4.7
	50	± 5
	80	± 5.5
	120	± 6
	180	± 6.5
	250	± 7
	315	± 7.5
	400	± 8
	500	± 8.5
	630	± 9.5
	800	± 10

European Projection / Proyeccion Europea
 Dim. in inches/Dim. en pulg.
 Date/Fecha: 16/01/09
 Drawn/Elab.: J. Carvajal
 Check/Rev.:
 Std/Cad./Aut.:

SIEMENS
 GUADALAJARA FACTORY
 Ref. 3MSE 750 0418
 Type/ Tipo: SD100 IEEE mNP FRAME/ARM. 444/445T
 Outline/Dimensiones: 3MSE 750 1283
 Scale/ Escala: -/-

NOTE: Changed the type of motor
 NOTA: Se cambio el tipo de motor

① ϕ 0.812" (ϕ 20.6)
 1/2"-13NC Tapped Hole for Grounding Both sides of Frame
 Barreno 1/2"-13NC para Tierra, en ambos lados de la Carcasa