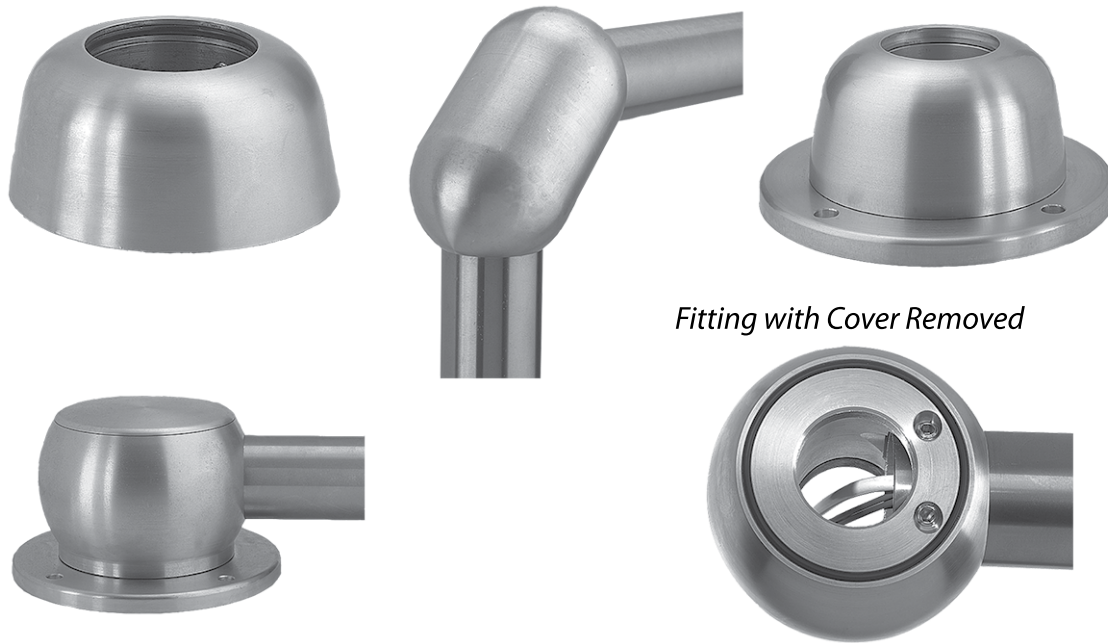


CS600 STAINLESS STEEL PENDANT ARM SYSTEM



Fitting with Cover Removed

INDUSTRY STANDARDS

IEC 60529, IP66

APPLICATION

Like the CS480 System, the CS600 Stainless Steel Pendant Arm System performs extremely well in applications that require corrosion resistance and suspension of process and control equipment for easy cleaning and washdown. CS600 is recommended for use with Stainless Steel HMI Enclosures with CS600 pendant cutout. Also like the CS480 System, the CS600 System has a wide variety of available components and a high degree of design configuration flexibility. (For possible design combinations, see the System Combinations Drawings.)

The difference between the CS480 System and the CS600 System is that CS600 is used for heavier loads, with a load rating at 3.3 ft. (1 m) of 134.89 lb. (61.3 kg). Ratings for other loads are shown in the Load Capacity chart.

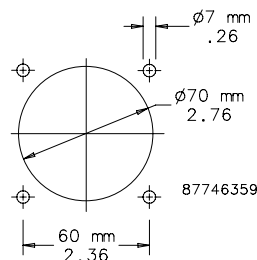
SPECIFICATIONS

- Tubing clamps into position for easy assembly and smooth appearance
- No external screws to trap dirt
- Fixed or swivel mounting, straight or at a 15-degree angle
- 90-degree fittings have a removable cover that allows easy access for wiring
- Anti-vibration capability
- The coupling hole geometries for enclosure machining are shown in the Coupling Hole diagram

FINISH

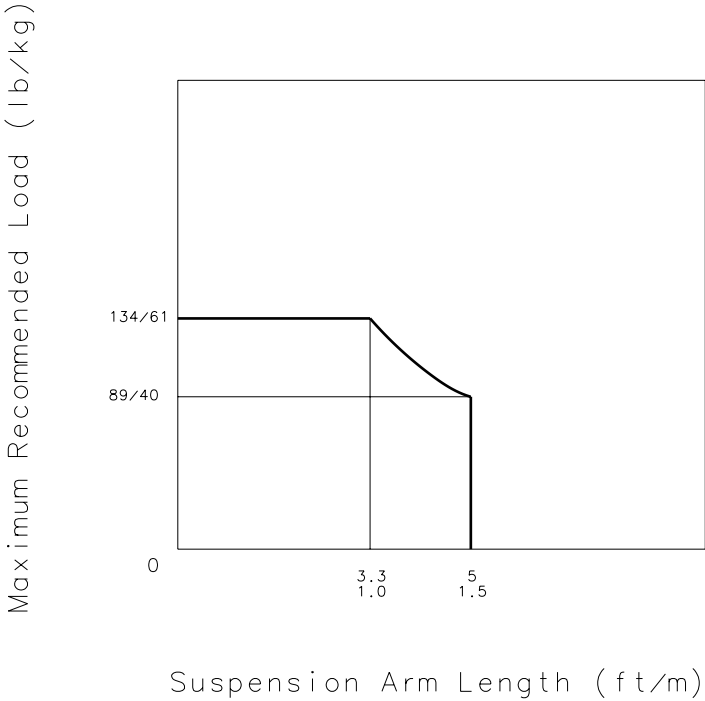
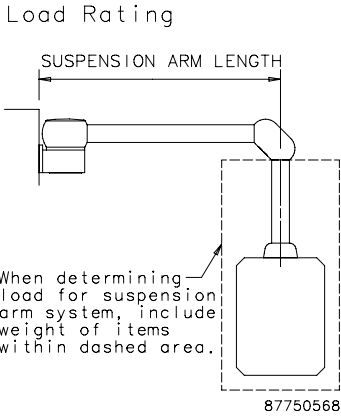
Tubing: Type 304 Stainless Steel
Fittings: Type 304 Stainless Steel

Coupling Hole Geometry for Enclosure Machining



SYSTEM LOAD CAPACITY

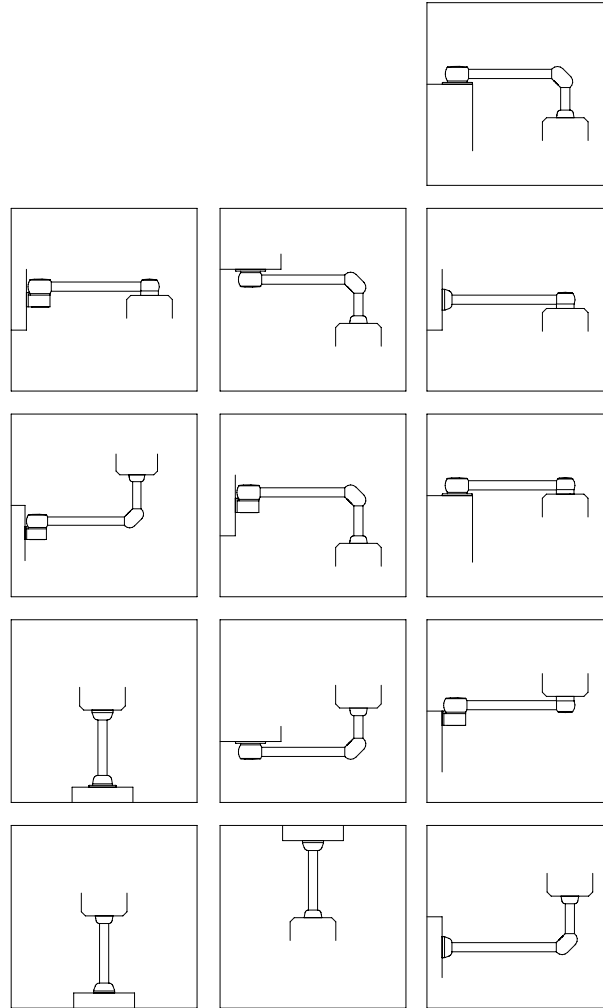
The load capacity of the CS600 Pendant Arm System is shown in the chart and diagram.



89001157

SYSTEM COMBINATIONS

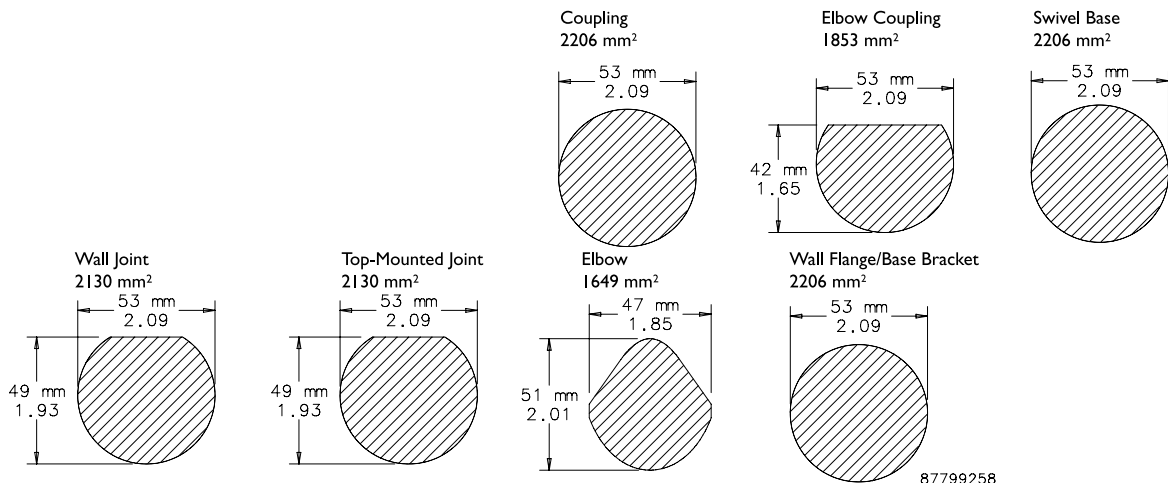
The wide variety of components permits a high level of flexibility in configuring the system. Some possible combinations are shown here.



87746360

CABLE ENTRY SPACE

Different fittings offer different amounts of space for cables and leads. The drawing diagram shows the dimensions at the narrowest point inside each fitting.



87799258

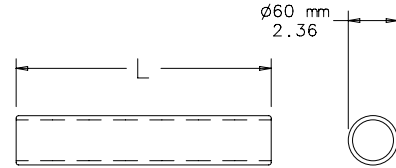
TUBING



Tubes have 60.3-mm (2.37-in.) outer diameter and are made from 3.6-mm wall thickness stainless steel.

BULLETIN: CCR6

Catalog Number	L mm/in.	Product Weight (kg)	Product Weight (lb.)
CCSST25	250 9.84	1.18	2.6
CCSST50	500 19.69	2.36	5.2
CCSST75	750 29.53	3.40	7.5
CCSST100	1000 39.37	4.63	10.2
CCSST125	1250 49.21	5.85	12.9
CCSST150	1500 59.06	15.30	6.94



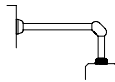
87799239

COUPLING

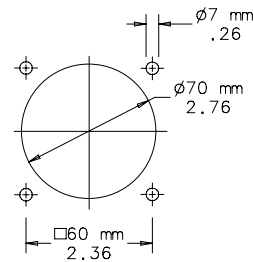
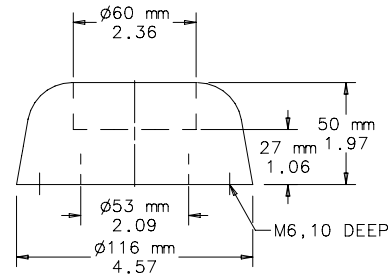


Flange coupling for mounting enclosures. Turns through 300 degrees with rotation limiter. Preset torque. Maintenance-free bearings. Includes gaskets and mounting hardware.

BULLETIN: CCR6



Catalog Number	Description	Product Weight (kg)	Product Weight (lb.)
CCSSFC	Stainless steel	2.18	4.8



87746361

NOTE: Recommended mounting hole size shown.

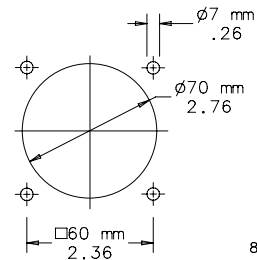
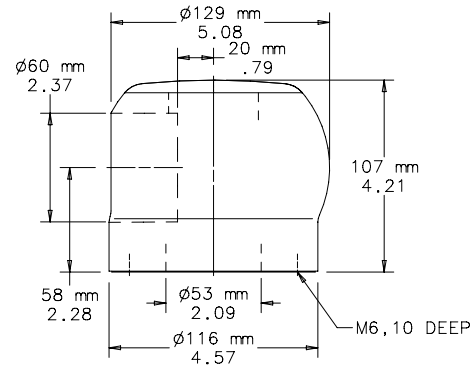


Flange Elbow Coupling for attaching enclosures. Assembly aperture cover conceals screws for easier cleaning. Turns through 300 degrees with rotation limiter. Preset torque. Maintenance-free bearings. Includes gaskets and mounting hardware.

BULLETIN: CCR6



Catalog Number	Description	Product Weight (kg)	Product Weight (lb.)
CCSSEC	Stainless Steel	6.49	14.3



87799241

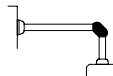
NOTE: Recommended mounting hole size shown.

ELBOW

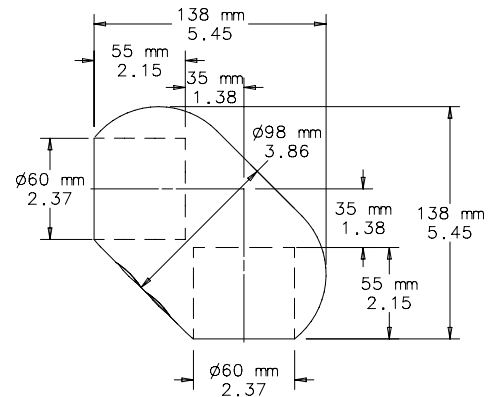


Elbow for connecting two tubes at 90 degrees. Includes screw cover and gaskets.

BULLETIN: CCR6



Catalog Number	Description	Product Weight (kg)	Product Weight (lb.)
CCSSE	Stainless Steel	4.45	9.8



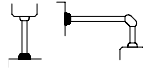
87746362

BASE BRACKET/WALL FLANGE

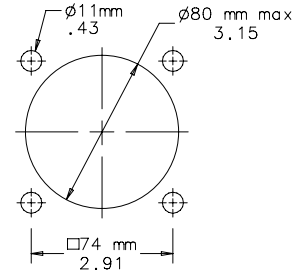
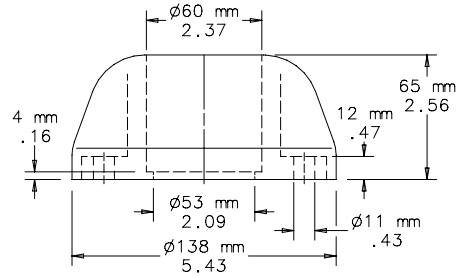


Base Bracket or Wall Flange for mounting to horizontal and vertical surfaces. Includes gaskets. Base-mounting fasteners not provided.

BULLETIN: CCR6



Catalog Number	Description	Product Weight (kg)	Product Weight (lb.)
CCSSWFB	Stainless Steel	3.67	8.1



87746363

NOTE: Recommended mounting hole size shown.

TOP-MOUNTED JOINT

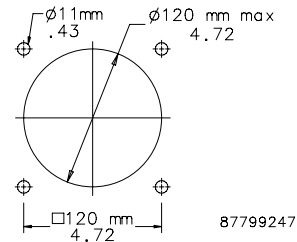
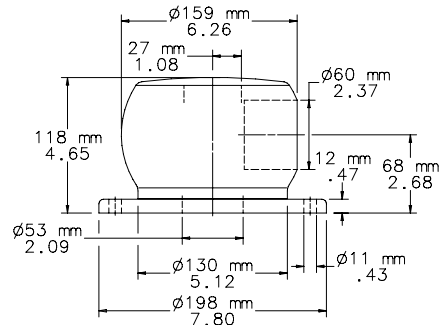


Top-Mounted Joint for mounting to horizontal surfaces. Assembly aperture cover conceals screws for easier cleaning. Turns through 300 degrees with rotation limiter. Preset torque. Maintenance-free bearings. Includes gaskets. Wall-mounting fasteners not provided.

BULLETIN: CCR6



Catalog Number	Description	Product Weight (kg)	Product Weight (lb.)
CCSSSJ	Stainless steel	13.65	30.1



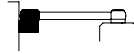
87799247

NOTE: Recommended mounting hole size shown.

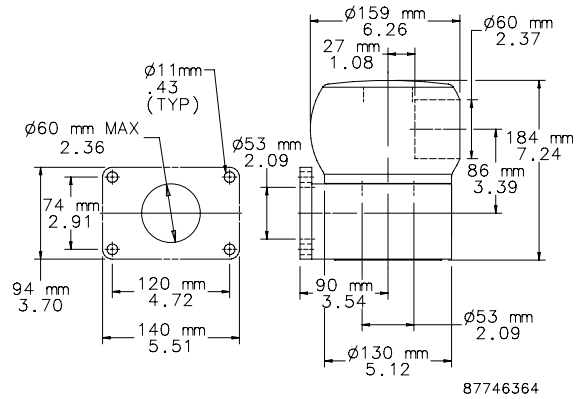


Wall Joint for mounting to vertical surfaces. Assembly aperture cover conceals screws for easier cleaning. Turns through 300 degrees with rotation limiter. Preset torque. Maintenance-free bearings. Includes gaskets. Wall-mounting fasteners not provided.

BULLETIN: CCR6



Catalog Number	Description	Product Weight (kg)	Product Weight (lb.)
CCSSWJ	Stainless steel	16.01	35.3



Notes