

# Technical data sheet - LÜTZE CABLEFIX® ONE

## Cable Entry System for cables

Cable fittings and accessories



<b>Identification</b>	Type	CABLEFIX ONE 10
	Part-No.	606502

### Use/Application/Properties

Application	<ul style="list-style-type: none"><li>• Cable entry system for cables with or without pre-installed connectors</li></ul>
Properties	<ul style="list-style-type: none"><li>• Kit includes frame, hardware and seal inserts to cover the entire clamping range specified for each entry point</li><li>• Simplified ordering process using a single part number for each kit</li><li>• Seal inserts have a layered design with defined clamping ranges accommodating a wide range of cable diameters</li><li>• Unused seals are closed by default, eliminating the need for blanking plugs</li><li>• Protects up to UL Type 4X, 12, 13 and IP 65</li><li>• Strong strain relief per DIN EN 62444</li><li>• Compact design provides space savings compared to using individual cable glands</li><li>• Acc. to UL 50E and 508A</li></ul>

### Technical data

Dimensions (w x h x d)	156.5 x 75.5 x 27.5 mm
Number of cables x cable diameter	10 x 3.5 – 15.5 mm
Number of cables	10
Clamping range S1	3.5 – 5.5 mm 5.5 – 7.5 mm 7.5 – 9.5 mm

19.03.2020 – Subject to technical modification

Part-No. 606502

USA: LUTZE INC.

13330 South Ridge Drive • Charlotte, NC 28273, USA  
Tel. +1 (704) 504-0222 • Fax +1 (704) 504-0223  
www.lutze.com • info@lutze.com

United Kingdom: LÜTZE Ltd.

Unit 3, Sandy Hill Park  
Sandy Way, Amington • GB-Tamworth, Staffs B77 4DU  
Tel. +44 (0)1827 31333-0 • Fax +44 (0)1827 31333-2  
www.lutze.com • sales.gb@lutze.co.uk



SYSTEMATIC TECHNOLOGY

# Technical data sheet - LÜTZE CABLEFIX® ONE

## Cable Entry System for cables

Clamping range S2	9.5 – 11.5 mm 11.5 – 13.5 mm 13.5 – 15.5 mm
Certifications	UL Type 4X UL Type 12 UL Type 13 UL CCN NITW2 NITW8
Burning behavior according to	UL 94 HB
Oil resistant according to	UL/NEMA Typ 13
Strain relief according to	EN 62444
Temperature range	-40 °C ... +80 °C
Protection class	IP66

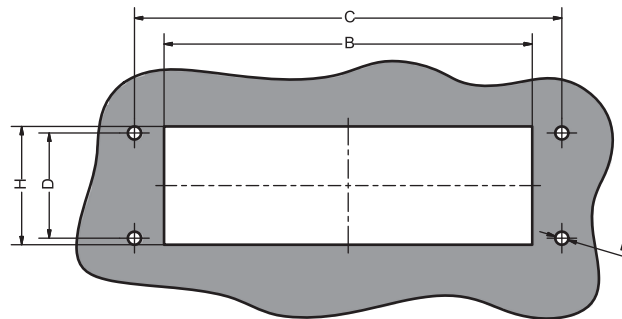
### Construction

Description	LÜTZE CABLEFIX® ONE 10
Material	PA 6 glass fiber reinforced
Material sealing element	CR
Material seal	PUR
Bolt material	Steel
Material characteristics	Silicone-free
Color	black

### General

PU	1 piece
Note	UL approval and sealing according to UL, in progress. Available in the 2nd half of the year.

### Dimensions



Cut-out (B×H)	112 × 46 mm
C	130.0 mm
D	32.0 mm
E	5.0 mm

19.03.2020 – Subject to technical modification

Part-No. 606502

USA: LUTZE INC.

13330 South Ridge Drive • Charlotte, NC 28273, USA  
Tel. +1 (704) 504-0222 • Fax +1 (704) 504-0223  
www.lutze.com • info@lutze.com

United Kingdom: LÜTZE Ltd.

Unit 3, Sandy Hill Park  
Sandy Way, Amington • GB-Tamworth, Staffs B77 4DU  
Tel. +44 (0)1827 31333-0 • Fax +44 (0)1827 31333-2  
www.lutze.com • sales.gb@lutze.co.uk



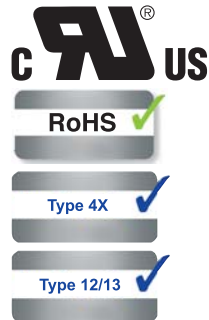
SYSTEMATIC TECHNOLOGY

# Technical data sheet - LÜTZE CABLEFIX® ONE

## Cable Entry System for cables

---

Logo



19.03.2020 – Subject to technical modification

Part-No. 606502

USA: LUTZE INC.

13330 South Ridge Drive • Charlotte, NC 28273, USA  
Tel. +1 (704) 504-0222 • Fax +1 (704) 504-0223  
www.lutze.com • info@lutze.com

United Kingdom: LÜTZE Ltd.

Unit 3, Sandy Hill Park  
Sandy Way, Amington • GB-Tamworth, Staffs B77 4DU  
Tel. +44 (0)1827 31333-0 • Fax +44 (0)1827 31333-2  
www.lutze.com • sales.gb@lutze.co.uk