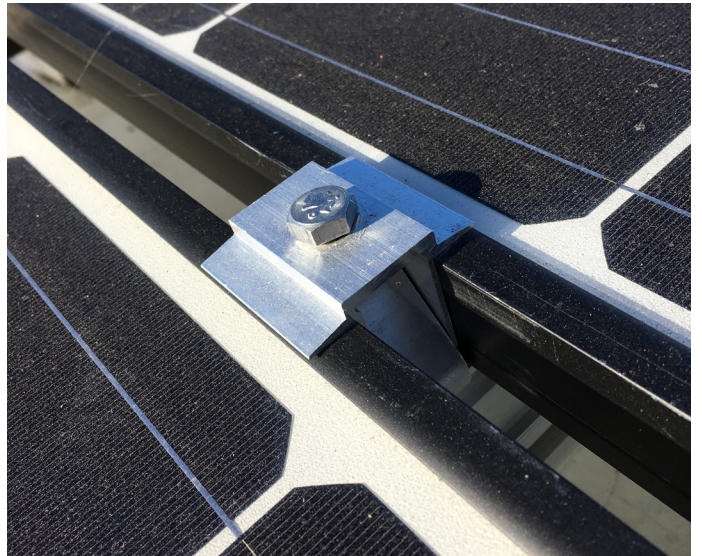
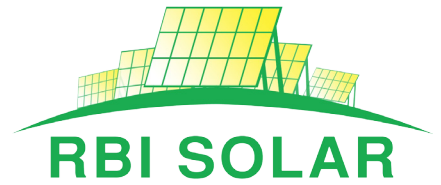


2017 Product Guide





About Page

By acquisition in 2014, RBI Solar is pleased to introduce Renusol America products as our own. Our roof mount engineers design with the customer's best interests in mind and are proud of their background and innovation in the industry. Utilizing our configurator as well as our knowledgeable team, we will help guide you to a mounting solution that is easy to install on your project. Whether you're looking for a commercial, industrial, or private use system, our roof mount solutions are designed to meet your PV roof needs.

All our roof solutions include the following benefits:

- Pre-assembled mounting components
- Made in America
- Proprietary "one-size-fits-all" height-adjustable end clamps and snap-in-place mid-clamps
- UL2703 Listed for bonding and grounding





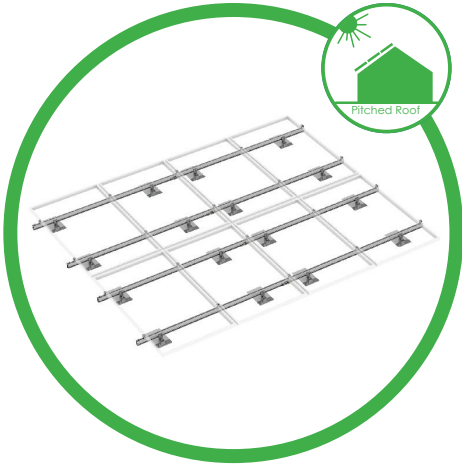
Table of Contents

Product Portfolio.....	4
RBI Veratile Roof Mount Solution RS-VS.....	6
Rails & Splice Connectors (East).....	7
Rails & Splice Connectors (West).....	8
End & Mid Clamps.....	9
L-Feet.....	10
Roof Attachment & Flashing Components.....	11
Accessories & Grounding Components.....	12
RBI Tilted Roof Mount Solution RS-TL.....	14
Ground Mount Adapter Kits.....	16
RBI Metal Roof Mount Solution RS-MS.....	17
Clamp Bases.....	18
End & Mid Clamps.....	19
Accessories & Grounding Components.....	20
RBI One Piece Mounting Solution GM-GS.....	21
HMWPE Base Components & Accessories.....	22
Frameless Clamps for VS & Pulin Mount.....	23
Frameless Module Clamps.....	24
Limited Availability Items.....	25

Thank you for choosing RBI Solar mounting solutions!

Price and specifications are subject to change without notice. RBI Solar will attempt to notify you on a regular basis of the overall price sheet updates and changes. If you are working with a distributor, contact them for final pricing. If you are a distributor and need assistance with your pricing, please contact your sales representative or call us at +1 (513) 618-7240.

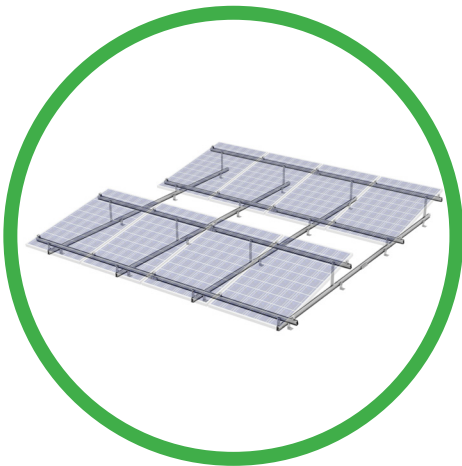
Pitched Roof



Versatile Solution | RS-VS

- Universal end & mid clamps
- UL2703 listed
- UL1703 class A fire rating for type 1, 2, & 3 PV modules
- Pre-assembled clamps & L-feet
- Stion frameless clamps
- Fastener-free splices
- Integrated bonding clamps & splices

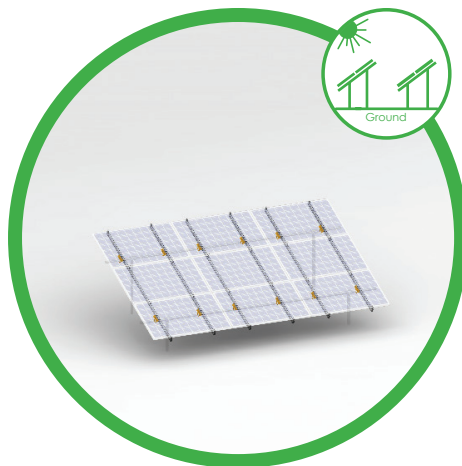
Roof Mount



Tilted Solution | RS-TL

- Pre-assembled tilt legs for VS system
- 10° tilt for portrait orientation
- 5° tilt for portrait orientation
- 10° tilt for landscape orientation
- Single-rail and double-rail configuration
- UL2703 listed
- UL1703 class A fire rating for type 1, 2, and 3 PV modules

Ground Mount



Ground Mount | GM-Kit

With Ground Mount Adapter

- Angle adapters are pre-assembled with t-bolts
- Two sizes of U-bolts for varying pipe sizes
- Fits 1.5", 2.0", 2.5" and 3.0" schedule 40 pipe
- Modules can be mounted at any tilt up to 45°
- Compatible with all VS rails

Metal Solutions | RS-MS

- Rail-less system for trapezoidal sheet metal roofs
- Clamp base fastens directly to sheet metal; no rails needed
- UL 2703 listed
- Self-piercing / self-tapping screws
- Triple protection from leaks
- Universal end & mid clamps
- Compact packaging
- Engineered for wind speeds up to 170 mph



Pitched Roof

One Piece Solution | GM-GS

- One-piece, universal ground-mount system for 72-cell modules
- Non-penetrating, distributed-load system
- Low PSF make it a great solution for landfills, brownfield sites, and other challenging terrain
- Stackable, easy to transport to & stage at the job site
- UV resistant HMWPE material with 25-year warranty



Ground Mount

For more information

You can find our intake form and project configurator on our website:

Intake Form: <http://renusolamerica.com/>

Project Configurator: <http://web.renusolamerica.com/>



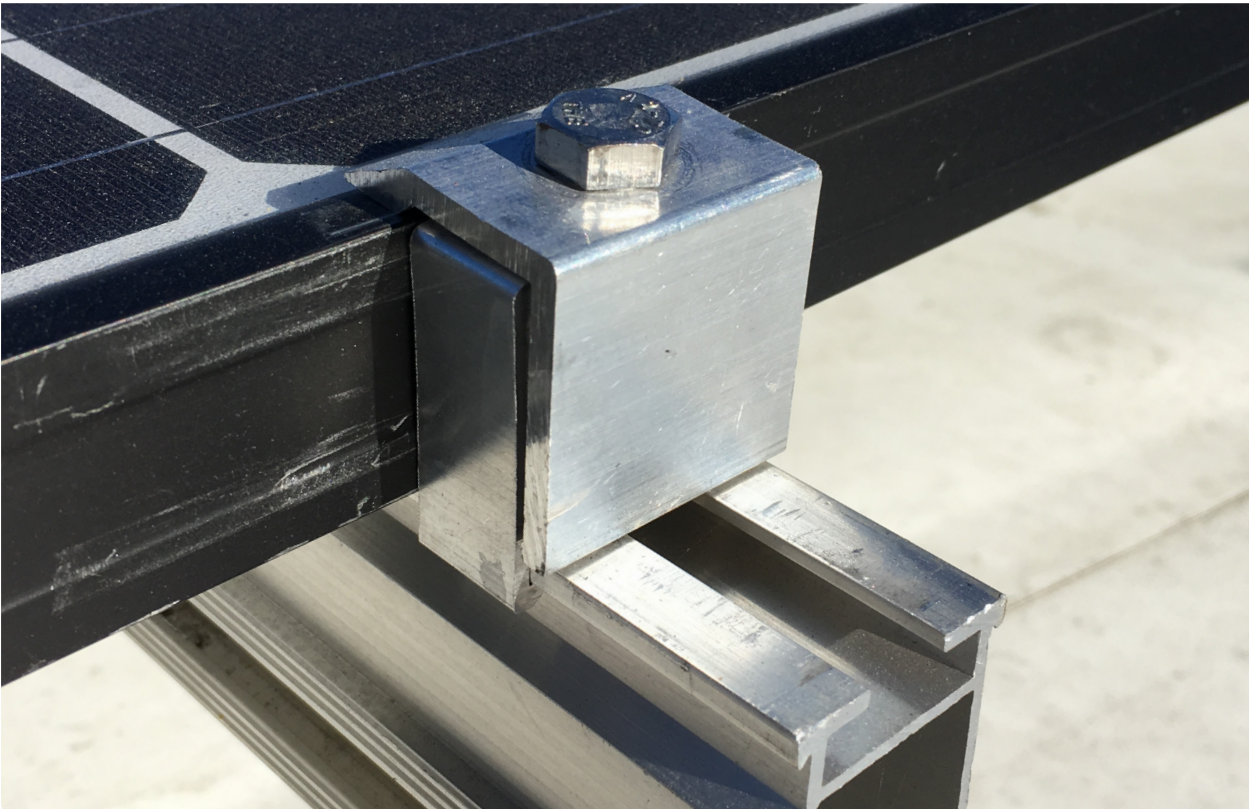
Versatile Roof Mount Solution | RS-VS

Pre-Assembled, Height-Adjustable, One-Size-Fits-All, Pitched-Roof Mounting System

The RBI Solar Versatile Roof Mount Solution (RS-VS) system is a light, flexible on-roof system for pitched roofs suited for all roofing materials and most current PV modules. Whether you have a commercial or residential application, this system can easily handle the challenges of the project.

Thanks to height-adjustable mounting elements, you can quickly adjust the system for different size modules or variations in the roof surface. Rails have continuous spans up to 12 feet and are available in a variety of lengths up to 282.5". The installation of the few, pre-assembled components is fast and easy.

RS-VS components come in both mill finish and black anodized to blend in with the roof surface or solar module frame.



- Simple, minimal system components
- Preassembled mounting components
- Only one tool (13mm socket) required for installation
- Integrated bonding clamps & splices
- UL 1703 Class A fire rating for Type 1, Type 2, and Type 3 modules
- UL 2703 listed
- Easily movable clamps and rails quickly expand or change to desired rooftop panel design
- L-Feet insert anywhere without sliding, complete with alignment indicator ensuring proper installation
- Stronger rails with 20% less weight
- Maximum rail spans up to 12 feet
- Product is available in mill finish and black anodized



Picture	Part #	Description	QTY	Weight
---------	--------	-------------	-----	--------

Available from Inventory "Eastern" US

	460443	VS-R Rail 123" (mill)	100-pack	616 lbs.
	460444	VS-R Rail 163.5" (mill)	100-pack	819 lbs.
	460445	VS-R Rail 204" (mill)	100-pack	1,022 lbs.
	460168	VS-C Rail 123" (mill)	100-pack	697 lbs.
	460170	VS-C Rail 163.5" (mill)	100-pack	926 lbs.
	460347	VS-C Rail 204" (mill)	100-pack	1,156 lbs.

Special Order Items (3-5 week lead time)

Minimum Order Quantity is 2,000 lbs.

Various lengths can be ordered with a 500 lb. minimum per variation

Exact count fee of \$350 unless a deviation +/- 15% is accepted

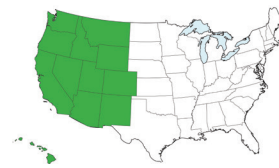
	400443	VS-R Rail 123" (mill)	1-pc	6.2 lbs.
	400444	VS-R Rail 163.5" (mill)	1-pc	8.2 lbs.
	400445	VS-R Rail 204" (mill)	1-pc	10.2 lbs.
	400167	VS-C Rail 123" (mill)	1-pc	7 lbs.
	400169	VS-C Rail 163.5" (mill)	1-pc	9.3 lbs.
	400198	VS-C Rail 204" (mill)	1-pc	11.6 lbs.
	430443	VS-R Rail 123" (black)	1-pc	6.2 lbs.
	430444	VS-R Rail 163.5" (black)	1-pc	8.2 lbs.
	430445	VS-R Rail 204" (black)	1-pc	10.2 lbs.
	400194	VS-C Rail 123" (black)	1-pc	7 lbs.
	400195	VS-C Rail 163.5" (black)	1-pc	9.3 lbs.
	400251	VS-C Rail 204" (black)	1-pc	11.6 lbs.

*Custom rail lengths are available by inquiry only. Lead time and minimum order quantities apply.

Picture	Part #	Description	QTY	Weight	Composed of
---------	--------	-------------	-----	--------	-------------

Be sure to contact us for the correct Splice Connector based on rail being used in your system

	560401	VS IB Splice Connector (black - preassembled)	60-pack	29 lbs.	<ul style="list-style-type: none"> • 60x VS IB mill finish splice • 240x 25mm serrated T-bolts • 240x M8 serrated flange nut
		Integrated Bonding			
	420346	VS-R Splice Connector	8-pack	4.4 lbs.	<ul style="list-style-type: none"> • 8x VS-R splice
		Used for thermal expansion ONLY			
	460173	VS-C Splice Connector	8-pack	4.8 lbs.	<ul style="list-style-type: none"> • 8x VS-C splice
		Used for thermal expansion ONLY			



Picture	Part #	Description	QTY	Weight
---------	--------	-------------	-----	--------

Available from Inventory "Western" US

	460343	Renusol VS-R Rail 123" (mill)	50-pack	276 lbs.
	460344	Renusol VS-R Rail 163.5" (mill)	50-pack	367 lbs.
	460345	Renusol VS-R Rail 204" (mill)	50-pack	457 lbs.
	490343	Renusol VS-R Rail 123" (black)	50-pack	276 lbs.
	490344	Renusol VS-R Rail 163.5" (black)	50-pack	367 lbs.
	490345	Renusol VS-R Rail 204" (black)	50-pack	457 lbs.
	460168	Renusol VS-C Rail 123" (mill)	100-pack	697 lbs.
	460170	Renusol VS-C Rail 163.5" (mill)	100-pack	926 lbs.
	460347	Renusol VS-C Rail 204" (mill)	100-pack	1,156 lbs.

Special Order Items (3-5 week lead time)

Minimum Order Quantity is 2,000 lbs.

Various lengths can be ordered with a 500 lb. minimum per variation

Exact count fee of \$200 will be applied unless an overage (up to 15%) is accepted by Customer

	400343	Renusol VS-R Rail 123" (mill)	1-pc	5.5 lbs.
	400344	Renusol VS-R Rail 163.5" (mill)	1-pc	7.3 lbs.
	400345	Renusol VS-R Rail 204" (mill)	1-pc	9.2 lbs.
	400350	Renusol VS-C Rail 123" (mill)	1-pc	7 lbs.
	400351	Renusol VS-C Rail 163.5" (mill)	1-pc	9.3 lbs.
	400352	Renusol VS-C Rail 204" (mill)	1-pc	11.6 lbs.
	430343	Renusol VS-R Rail 123" (black)	1-pc	5.5 lbs.
	430344	Renusol VS-R Rail 163.5" (black)	1-pc	7.3 lbs.
	430345	Renusol VS-R Rail 204" (black)	1-pc	9.2 lbs.
	430350	Renusol VS-C Rail 123" (black)	1-pc	7 lbs.
	430351	Renusol VS-C Rail 163.5" (black)	1-pc	9.3 lbs.
	430352	Renusol VS-C Rail 204" (black)	1-pc	11.6 lbs.

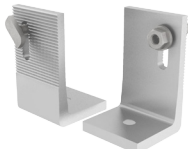
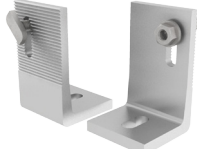

*Custom rail lengths are available by inquiry only. Lead time and minimum order quantities apply.

Picture	Part #	Description	QTY	Weight	Composed of
---------	--------	-------------	-----	--------	-------------

Be sure to contact us for the correct Splice Connector based on rail being used in your system

	560401	Renusol VS IB Splice Connector (black - preassembled)	60-pack	29 lbs.	<ul style="list-style-type: none"> 60x VS IB mill finish splice 240x 25mm serrated T-bolts 240x M8 serrated flange nut
		Integrated Bonding			
	420346	Renusol VS-R Splice Connector	8-pack	4.4 lbs.	<ul style="list-style-type: none"> 8x VS-R splice
		Used for thermal expansion ONLY			
	460173	Renusol VS-C Splice Connector	8-pack	4.8 lbs.	<ul style="list-style-type: none"> 8x VS-C splice
		Used for thermal expansion ONLY			

Picture	Part #	Description	QTY	Weight	Composed of
Mill Finish Mid & End Clamps					
	460381	End Clamp V3, 30-50mm (preassembled)	12-pack	1.5 lbs.	<ul style="list-style-type: none"> • 12x end clamp V3, 30-50mm • Stainless steel HHCS
	460382	Mid Clamp V3, 30-50mm (preassembled)	42-pack	4.8 lbs.	<ul style="list-style-type: none"> • 42x mid clamp V3, 30-50mm • Stainless steel HHCS
	560402	IB Mid Clamp, 30-40mm Integrated bonding	42-pack	7.2 lbs.	<ul style="list-style-type: none"> • 42x IB mid clamp • 42x M8 serrated flange nuts • 42x 58mm serrated T-bolts
	460302	IB Mid Clamp, 40-50mm (preassembled) Integrated bonding	42-pack	4.0 lbs.	<ul style="list-style-type: none"> • 42x IB mid clamp • 42x M8 serrated flange nuts • 42x 68mm serrated T-bolts
Black Anodized Mid & End Clamps					
	490303	IB Mid Clamp, 30-40mm (preassembled) Integrated Bonding	42-pack	7.2 lbs.	<ul style="list-style-type: none"> • 42x IB mid clamp • 42x M8 serrated flange nuts • 42x58mm serrated T-bolts
	490304	IB Mid Clamp, 40-50mm (preassembled) Integrated Bonding	42-pack	7.2 lbs.	<ul style="list-style-type: none"> • 42x IB mid clamp • 42x M8 serrated flange nuts • 42x68mm serrated T-bolts
	461000	End Clamp V3, 30-50mm (preassembled)	12-pack	1.5 lbs.	<ul style="list-style-type: none"> • 12x end clamp V3, 30-55mm • Stainless steel HHCS w/ black head
	461001	Mid Clamp V3, 30-50mm (preassembled)	42-pack	4.8 lbs.	<ul style="list-style-type: none"> • 42x middle clamp V3, 30-50mm • stainless steel HHCS w/ black head

Picture	Part #	Description	QTY	Weight	Composed of
	461008	GF L-Foot Assembly (mill - preassembled)	25-pack	8.0 lbs.	<ul style="list-style-type: none"> • 25x mill finish GF L-feet • 25x 25mm T-bolt • 25x M8 serrated flange nut
	461009	L-Foot Assembly V2 (mill - preassembled) North-South Adjustability	20-pack	6.6 lbs.	<ul style="list-style-type: none"> • 20x mill finish L-feet • 20x 25mm T-bolt • 20x M8 serrated flange nut
	470128	L-Foot Assembly V2 (black - preassembled) North-South Adjustability	20-pack	6.6 lbs.	<ul style="list-style-type: none"> • 20x black L-feet • 20x 25mm T-bolt • 20x M8 serrated flange nut

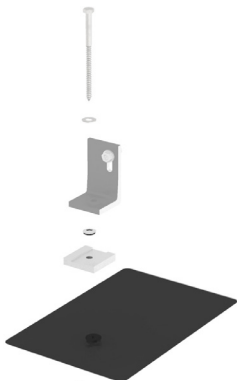
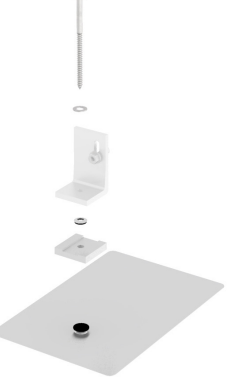


Pitched Roof

Roof Attachment & Flashing Components

Pitched Roof

Picture	Part #	Description	QTY	Weight	Composed of
---------	--------	-------------	-----	--------	-------------

Below is a list of roof attachment & flashing components that will assist your team with the VS installation. All items can be purchased through RBI Solar. Separate components are available and can be purchased by inquiry only.

	461011	Flashing Set with Lag Bolts (black)	Set of 50 (Assembly required)	29 lbs.	<ul style="list-style-type: none"> • 50x black 8"x 12" Ecofasten GF1-BLK-0812 shingle flashing • 50x RSA-CP-SQ square adapter • 50x 5/16x5 lag bolt • 50x flat washer • 50x bonded washer • (L-foot sold separately)
	460216	Flashing Set with Lag Bolts (mill)	Set of 50 (Assembly required)	29 lbs.	<ul style="list-style-type: none"> • 50x mill finish 8"x 12" Ecofasten GF1-MLL-0812 shingle flashing • 50x RSA-CP-SQ square adapter • 50x 5/16x5 lag bolt • 50x flat washer • 50x bonded washer • (L-foot sold separately)
	560067	Flashing Set with Hanger Bolts (mill)	Set of 50 (Assembly required)	29 lbs.	<ul style="list-style-type: none"> • 50x mill finish 8"x 12" Ecofasten GF1-MLL-0812 shingle flashing • 50x Ecofasten F-111-A adapter • 50x 5/16x6 hanger bolt • 50x flange nut • 50x hex nut • 50x bonded washer • (L-foot sold separately)
	461012	GF Flashing Set with Lag Bolts (mill) This is to be used with the GF L-foot ONLY (part# 461008)	Set of 50 (Assembly required)	20 lbs.	<ul style="list-style-type: none"> • 50x mill finish 8"x 12" Ecofasten GF1-MLL-0812 shingle flashing • 50x 5/16x5 lag bolt • 50x bonded washer • (GF L-foot sold separately)

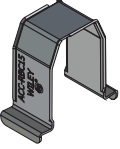


Picture	Part #	Description	QTY	Weight	Composed of
---------	--------	-------------	-----	--------	-------------

Below is a list of grounding & wire management products that will assist your team with the RS-VS Installation.
All items can be purchased through RBI Solar.

	460014	WEEB-CCR 2	100-Pack	1 lb.	<ul style="list-style-type: none"> • 100x stainless WEEB CCR 2
	921005	WEEB-Lug-8.0 Set V2 including hardware	20-Pack	3.2 lbs.	<ul style="list-style-type: none"> • 20x grounding lug WEEB 8.0 • 20x stainless M8 x 20mm T-bolt • 20x M8 serrated flange
	921006	WEEB Bonding Jumper 8.0 Set V2 including hardware	10-Pack	2 lbs.	<ul style="list-style-type: none"> • 10x bonding jumper WEEB 8.0 • 20x stainless M8 x 20 mm T-bolt • 20x M8 serrated flange nut
	921014	Microinverter Mounting Hardware Kit, V2 WEEB-CCR2 required	20-Pack	1.4 lbs.	<ul style="list-style-type: none"> • 20x stainless M8 x 20 mm T-bolt • 20x large stainless flat washer • 20x M8 serrated flange nut
	921013	IB T-bolt Hardware Kit	20-pack	1.4 lbs.	<ul style="list-style-type: none"> • 20x stainless M8 x 25 mm serrated T-bolt • 20x M8 serrated flange nut
	960121	Module Jumper 8.0	25-pack	1 lb.	<ul style="list-style-type: none"> • 25x DynoBond (8")
	960014	Module Jumper 12.0 To be used on SolarWorld Modules	25-pack	1 lb.	<ul style="list-style-type: none"> • 25x DynoBond (12")

Picture	Part #	Description	QTY	Weight	Composed of
---------	--------	-------------	-----	--------	-------------

Below is a list of grounding & wire management products that will assist your team with the RS-VS Installation.
All items can be purchased through RBI Solar.

	961003	VS Wire Management Clip	100-pack	1 lb.	<ul style="list-style-type: none"> • 100x corrosion resistant 304 stainless steel Wiley clips
	960197	Large Cable Clip	100-pack	1 lb.	<ul style="list-style-type: none"> • 100 x large stainless steel cable clips • Holds 1 or 2 PV cables • Attaches to module frame
	920043	Black Rail End Cap (Left & Right) for VS-R rail	50-pack	1 lb.	<ul style="list-style-type: none"> • 50 sets of black end caps



Tilted Roof Mount Solution | **RS-TL**

The RBI Solar Tilted Roof Mount Solutions (RS-TL) are available in 5° or 10° tilt angles. The tilted system is designed to accommodate multiple types of low slope or flat roofs. With both preassembled components and true one-tool installation, this cost-effective system is quick and easy to install.

Pitched Roof



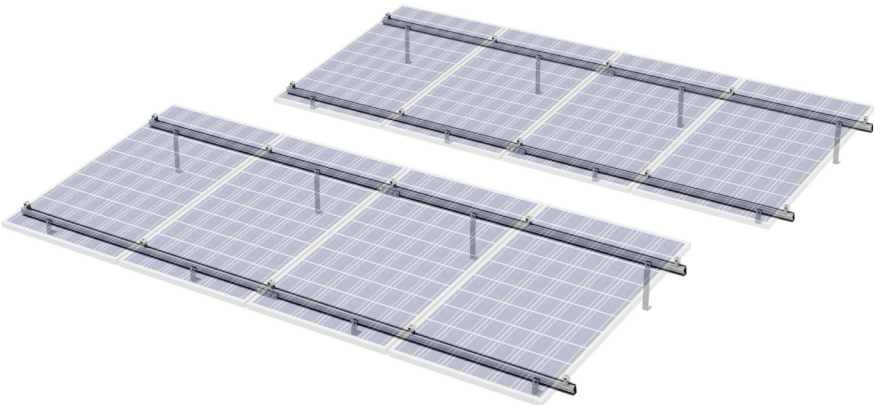
- Preassembled tilt legs compatible with the RBI RS-VS Roof Mount Solution
- 5° and 10° tilt options for portrait orientation
- Single rail and double rail configuration available
- UL 1703 Class A fire rating for Type 1, Type 2, and Type 3 modules
- UL 2703 listed for bonding and grounding

The RS-VS Tilt System pricing is project-specific. Please contact the RBI Solar office for design, engineering, and quote.

Flat Roof

Single Rail Application

One-piece tilt legs come pre-assembled and attach directly to roof attachments.

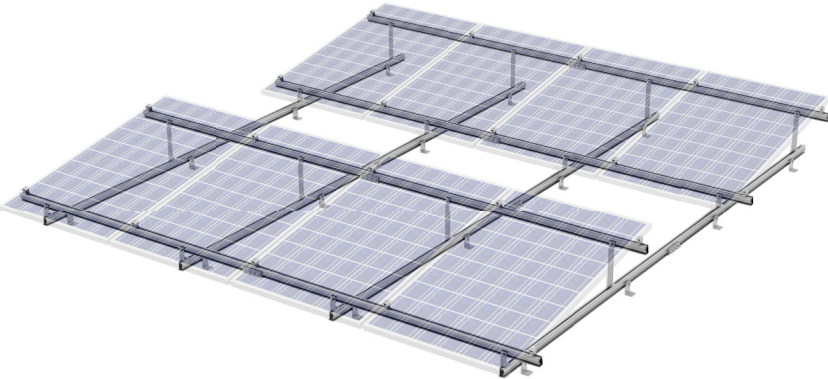


Tilt Legs

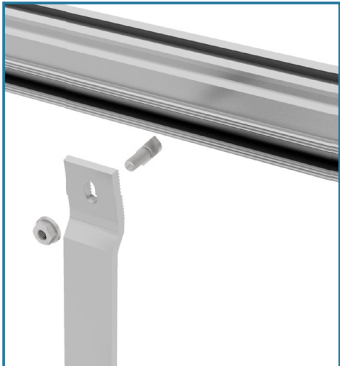


Double Rail Application

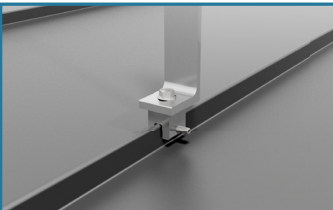
Certain roofing compositions will require that a double-rail assembly be used to apply the proper angle toward the sun. In this scenario, a second rail is placed under the tilt legs perpendicular to the main rails.



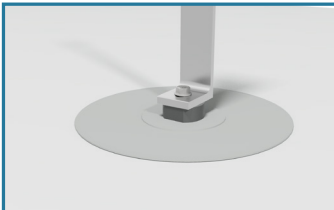
Rail Attachment



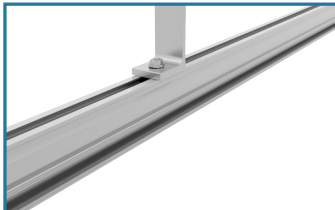
Tilt-Leg Attachment Methods



Metal Roof Attachment



Membrane Attachment


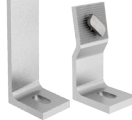



Rail Attachment

**Landscape and custom tilt options available after engineering review.*

Picture	Part #	Description	QTY	Weight	Composed of
---------	--------	-------------	-----	--------	-------------

The RS-TL Pricing is project specific. Please contact RBI Solar office for design, engineering, & quote.

	461013	Portrait Orientation 10 ° Tilt	20-pack	20 lb.	<ul style="list-style-type: none"> • 20x large tilt leg portrait 10° • 20x small tilt leg portrait 10° • 40x serrated 25mm t-bolts • 40x M8 serrated hex nut
	461021	Portrait Orientation 5 ° Tilt	20-pack	18 lb.	<ul style="list-style-type: none"> • 20x large tilt leg portrait 5° • 20x small tilt leg portrait 5° • 40x serrated 25mm t-bolts • 40x M8 serrated hex nut
	461014	Landscape Orientation 10 ° Tilt	20-pack	20 lb.	<ul style="list-style-type: none"> • 20x large tilt leg landscape 10° • 20x small tilt leg landscape 10° • 40x serrated 25mm t-bolts • 40x M8 serrated hex nut • 20pcs assembly hardware bag


Ground Mount Adapter

Ground Mount Adapter Kits


Ground Mount

Picture	Part #	Description	QTY	Weight	Composed of
---------	--------	-------------	-----	--------	-------------

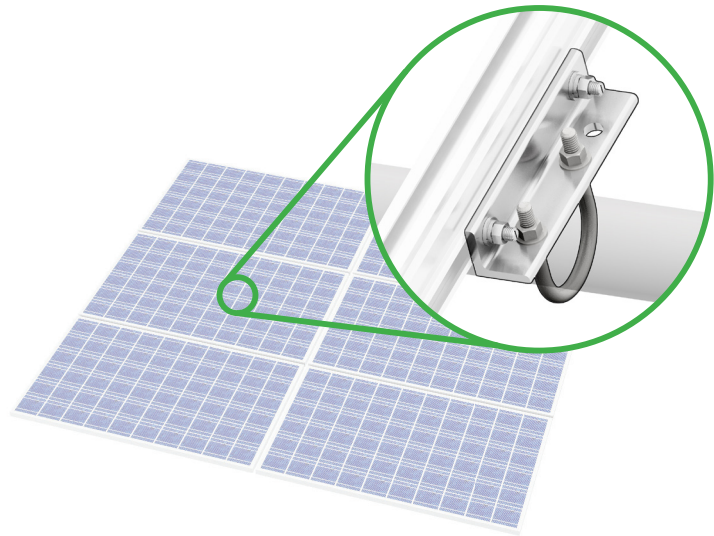
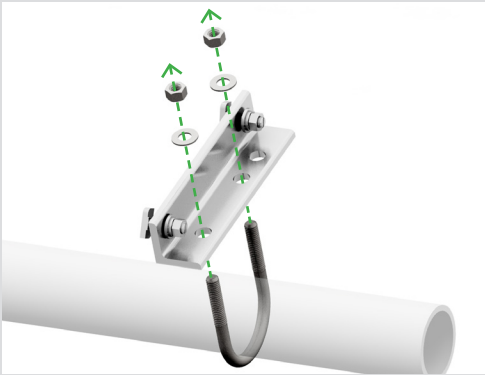
Below is a list of ground mount adapter kits that provide RS-VS rail connection to customer-engineered Schedule 40 pipe structures. The ground mount adapter can be used with all VS rails.

	460082	Ground Mount Adapter Kit w/ Small U-Bolt	12-Pack	9.8 lb.	<ul style="list-style-type: none"> • 12x angle adapter • 24x T-bolt • 24x M8 Nut • 12x small U-bolt • 24x flat washer • 24x nut
---	--------	---	---------	---------	---

Compatible with 1.5" & 2.0" Schedule 40 Pipe

	460148	Ground Mount Adapter Kit w/ Large U-Bolt	12-Pack	10.6 lbs.	<ul style="list-style-type: none"> • 12x angle adapter • 24x T-bolt • 24x M8 Nut • 12x large U-bolt • 24x flat washer • 24x nut
---	--------	---	---------	-----------	---

Compatible with 2.5" & 3.0" Schedule 40 Pipe



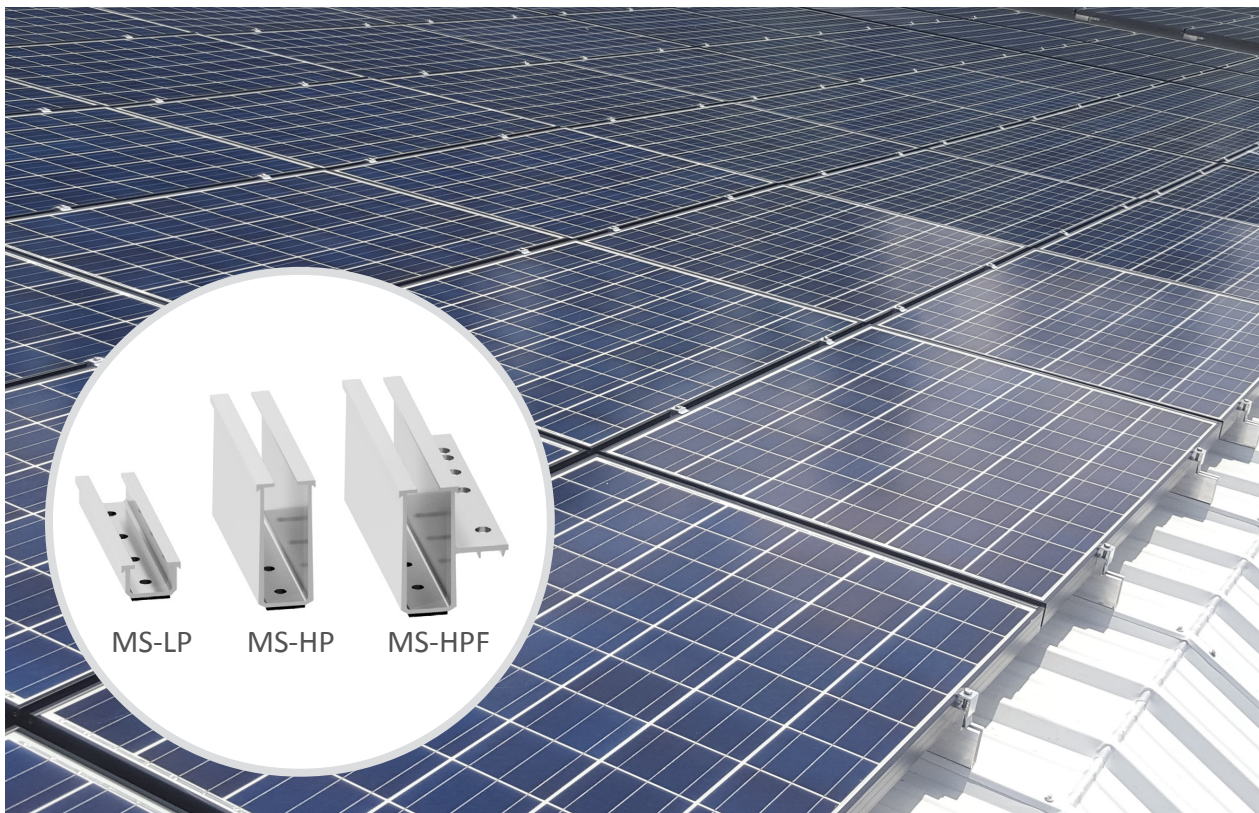


Metal Roof Mount Solution | RS-MS




Simple, Compact, and Versatile Pitched-Roof PV Mounting Systems for Trapezoidal Metal Roofs





The RBI Solar Metal Roof Mount Solution (RS-MS) system has been developed to easily install PV modules on steel trapezoidal sheet metal roofs. RS-MS is compatible with all widely used sheet metal roofs 26-gauge or thicker with flat trapezoidal peaks at least $\frac{3}{4}$ " width.

The RS-MS clamp base fastens directly to the sheet metal, eliminating the need for attachment to purlins and rafters. With the elimination of rails, this compact system can easily be shipped direct to the job site. Both clamp bases and fasteners feature pre-assembled EPDM gaskets for double protection against leaks.




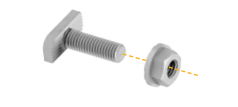
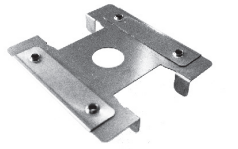




- Various heights for clamp bases
- Pre-assembled clamps for quick installation
- Compatible with Stion frameless clamps
- Self-piercing/self-tapping screws with hardened tips to eliminate drilling
- ICC and UL approvals for fast permitting
- UL 2703 Listed (MS-HP and MS-HPF systems)
- Compact packaging to reduce shipping costs; a shoebox holds a 5kW system

Picture	Part #	Description	QTY	Weight	Composed of
	460194	MS-LP Clamp base set	50-pack	7.8 lbs.	<ul style="list-style-type: none"> • 50 x MS-LP clamp base • 100 x screws with bonded washer
	460300	MS-HP Clamp base set	50-pack	17.4 lbs.	<ul style="list-style-type: none"> • 50 x MS-HP clamp base • 100 x screws with bonded washer
	460301	MS-HPF Clamp base set Integrated flange for microinverter/ optimizer mounting	50-pack	25.4 lbs.	<ul style="list-style-type: none"> • 50 x MS-HPF clamp base • 100 x screws with bonded washer

Picture	Part #	Description	QTY	Weight	Composed of
Mill Finish Mid & End Clamps					
	460381	End clamp V3, 30-50mm (preassembled)	12-pack	1.5 lbs.	<ul style="list-style-type: none"> • 12x end clamp V3, 30-50mm • Stainless steel HHCS
	460382	Mid clamp V3, 30-50mm (preassembled)	42-pack	4.8 lbs.	<ul style="list-style-type: none"> • 42x mid clamp V3, 30-50mm • Stainless steel HHCS
Black Anodized Mid & End Clamps					
	461000	End Clamp V3, 30-50mm (preassembled)	12-pack	1.5 lbs.	<ul style="list-style-type: none"> • 12x end clamp V3, 30-50mm • Stainless steel HHCS w/ black head
	461001	Mid Clamp V3, 30-50mm (preassembled)	42-pack	4.8 lbs.	<ul style="list-style-type: none"> • 42x middle clamp V3, 30-50mm • Stainless steel HHCS w/ black head

Pitched Roof

Picture	Part #	Description	QTY	Weight	Composed of
	960223	MS Screws Only needed for projects where additional screws are required.	100-pack	1.4 lbs.	<ul style="list-style-type: none"> 100x screws with bonded washer
	960197	Large Cable Clip	100-Pack	1 lb.	<ul style="list-style-type: none"> 100 x large stainless steel cable clips Holds 1 or 2 PV cables Attaches to module frame
	961002	MS Wire Management Clip	100-pack	1 lb.	<ul style="list-style-type: none"> 100 x corrosion resistant 304 stainless steel Wiley clips
	921013	IB T-bolt Hardware Kit	20-Pack	1.4 lbs.	<ul style="list-style-type: none"> 20x stainless M8 x 25 mm serrated T-bolt 20x M8 serrated flange nut
	460014	WEEB-CCR 2	100-Pack	1 lb.	<ul style="list-style-type: none"> 100x stainless WEEB CCR 2
	960121	Module Jumper 8.0	25-Pack	1 lb.	<ul style="list-style-type: none"> 25x DynoBond (8")
	960014	Module Jumper 12.0 To be used on SolarWorld modules.	25-Pack	1 lb.	<ul style="list-style-type: none"> 25x DynoBond (12")

Pitched Roof



One Piece Mounting Solution | GM-GS

Simple and Fast One-Piece Ground-Mount Ballasted PV Mounting System

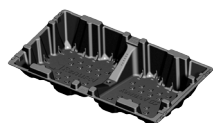
The RBI Solar One Piece Mounting Solution (GM-GS) is a non-penetrating one-piece mounting system for ground-mount applications available in a 10° tilt. The product is made from a 100% recycled high molecular weight polyethylene (HMWPE). This durable system transports easily and sets up quickly. The non-penetrating GS is a great application for landfills, brownfield sites, and other challenging terrain. One PV module mounts directly to one GM-GS; no complex project design or complicated assembly required. The universal design accommodates all common 72-cell modules. The mounting system requires no grounding since it is made of non-conductive material. The simplicity of the GM-GS saves installation time and overall cost.



- One piece mounting system for all common 72-cell framed modules
- Quick installation with approximately 20 units per man hour on large projects
- Stackable product for compact, easy shipping
- Exact ballast placement per unit; when and where needed
- Most advanced wind tunnel testing up to 150 MPH in accordance with ASCE 7-05/7-10
- Made in America

Picture	Part #	Description	QTY	Weight	Composed of
---------	--------	-------------	-----	--------	-------------

The GM-GS can be purchased with mounting holes pre-drilled at an additional cost (minimum order quantities apply).
 Lead time for standard GM-GS: Up to 8 weeks, check for availability



560300	GS- 10° Tilt 100% recycled material	10-pack	250 lbs.	<ul style="list-style-type: none"> 10x GS 10° HMWPE base and mounting hardware
	72-cell modules ONLY			

560301	GS- 10° Tilt 100% recycled material	60-pack	1,250 lbs.	<ul style="list-style-type: none"> 60x GS 10° HMWPE base and mounting hardware
	72-cell modules ONLY			

RBI Solar GM-GS Accessories



520150	Drill Jig	Each	27 lbs.	<ul style="list-style-type: none"> 1x adjustable drill jig for proper hole placement
--------	------------------	------	---------	---



921014	Microinverter Mounting Hardware Kit	20-Pack	1.4 lbs.	<ul style="list-style-type: none"> 20x stainless M8 x 20 mm T-bolt 20x large stainless flat washer 20x M8 flange nut
--------	--	---------	----------	---



600404	GS Assembly Tool Kit	Each	1.4 lbs.	<ul style="list-style-type: none"> 1x right-angled drive attachment 1x 7/16" drive socket 1x bit adapter
--------	-----------------------------	------	----------	---



960121	Module Jumper 8.0	25-Pack	1 lb.	<ul style="list-style-type: none"> 25x DynoBond (8")
--------	--------------------------	---------	-------	---



960014	Module Jumper 12.0	25-Pack	1 lb.	<ul style="list-style-type: none"> 25x DynoBond (12")
	To be used on SolarWorld 2.5 frame modules.			



960197	Large Cable Clip	100-Pack	1 lb.	<ul style="list-style-type: none"> 100x large stainless steel cable clips Holds 1 or 2 PV cables Attaches to module frame
--------	-------------------------	----------	-------	--



Frameless Solutions | **RS-FR**

Frameless Module Clamps for VS, and Purlin-Mount Applications

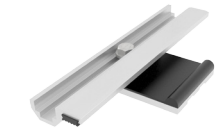
Stion co-developed specialized clamps for Stion's frameless modules. The frameless clamps have been developed to mount frameless PV modules on either pitched roofs or Z-purlins. These clamps are specifically designed for Stion STL modules ranging between 5.8mm and 6mm in thickness. The frameless clamps are compatible with the RS-VS, RS-MS, and purlin-based ground-mount applications.



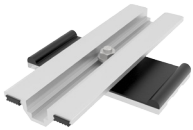
- Co-developed with Stion's frameless module design limitations
- UL 1703 Class A fire rating for Type 3 PV modules with RS-VS
- Available in black anodized and mill finish
- Universal T-bolt hardware for multiple-system compatibility
- Indicator line on T-bolts allow for proper orientation and engagement
- Stamped engineering span charts available
- Made in America

Picture	Part #	Description	QTY	Weight	Composed of
---------	--------	-------------	-----	--------	-------------

Frameless clamps- pitched-roof mounting (Roof mount RS-VS & RS-MS)



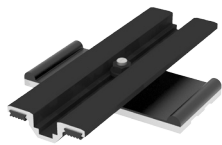
461002	Stion Frameless End Clamp, roof-mount (mill) incl. adapter plate	16-pack	9.0 lbs.	<ul style="list-style-type: none"> • 16x mill finish frameless end clamp w/ top contact • 16x end adapter plate w/ insulator • 16x stainless M8 x 25 mm T-bolt • 16x small stainless washer • 16x M8 flange nut w/ patch
--------	---	---------	----------	---



461003	Stion Frameless Mid Clamp, roof-mount (mill) incl. adapter plate	30-pack	23.0 lbs.	<ul style="list-style-type: none"> • 30x mill finish frameless mid clamp w/ top contacts • 30x mid adapter plate w/ insulator • 30x stainless M8 x 25 mm T-bolt • 30x small stainless washer • 30x M8 flange nut w/ patch
--------	---	---------	-----------	--



461004	Stion Frameless End Clamp, roof-mount (black) incl. adapter plate	16-pack	9.0 lbs.	<ul style="list-style-type: none"> • 16x black frameless end clamp w/ top contact • 16x end adapter plate w/ insulator • 16x stainless M8 x 25 mm T-bolt • 16x small stainless washer • 16x M8 flange nut w/ patch
--------	--	---------	----------	---



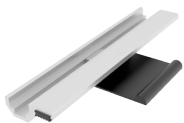
461005	Stion Frameless Mid Clamp, roof-mount (black) incl. adapter plate	30-pack	23.0 lbs.	<ul style="list-style-type: none"> • 30x black frameless mid clamp w/ top contacts • 30x mid adapter plate w/ insulator • 30x stainless M8 x 25 mm T-bolt • 30x small stainless washer • 30x M8 flange nut w/ patch
--------	--	---------	-----------	--

Power Optimizer/Microinverter Mounting (See installation instructions for more details)

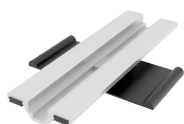


460377	Accessory Mounting Bracket Kit	20-pack	8.4 lbs.	<ul style="list-style-type: none"> • 20x accessory mounting brackets • 84x 20mm T-bolt' • 84x M8 flange nut • 42x small washer • 20x WEEB-DSK
--------	---------------------------------------	---------	----------	--

Frameless clamps- groundmounting



461006	Stion Frameless End Clamp, purlin-mount (mill)	80-pack	33.1 lbs.	<ul style="list-style-type: none"> • 80x mill finish framless end clamp w/ top contact • 80x end insulator • 80x stainless M8 x 25mm T-bolt • 80x small washer • 80x M8 flange nut
--------	--	---------	-----------	---



461007	Stion Frameless Mid Clamp, purlin-mount (mill)	80-pack	41.6 lbs.	<ul style="list-style-type: none"> • 80x mill finish framless mid clamp w/ top contact • 80x mid insulator • 80x stainless M8 x 25mm T-bolt • 80x small washer • 80x M8 flange nut
--------	--	---------	-----------	---

Pitched Roof

Ground Mount

Limited Availability Items

Picture	Part #	Description	QTY	Weight	Composed of
---------	--------	-------------	-----	--------	-------------

Below is a list of items that have been discontinued. Check with the RBI Solar office for availability.
See individual product sections for modified parts.

	460013	VS End Clamp V2 Button-head bolts	10-pack	1.2 lbs.	<ul style="list-style-type: none"> • 10x end clamp V2 30-50mm • stainless steel bolt
	470013	VS End Clamp V2 Button-head bolts	10-pack	1.2 lbs.	<ul style="list-style-type: none"> • 10x end clamp V2 30-50mm • stainless steel bolt
	490011	VS Mid Clamp V2 Button-head bolts	40-pack	3.6 lbs.	<ul style="list-style-type: none"> • 40x middle clamp V2 30-50mm • stainless steel bolt
	420193	WEEB 8.0 Lug Set including hardware	20-Pack	3.2 lbs.	<ul style="list-style-type: none"> • 20x grounding lug WEEB 8.0 • 20x T-bolt M8 x 20 mm • 20x M8 serrated flange nut
	420192	WEEB 8.0 Jumper Set including hardware	10-Pack	2 lbs.	<ul style="list-style-type: none"> • 10x bonding jumper WEEB 8.0 • 20x stainless M8 x 20 mm T-bolt • 20x M8 serrated flange nut
	560094	Anchor Bracket Kit Flashing and roof screws are NOT included. These components need to be selected based on specific roof construction.	8-pack	28 lb.	<ul style="list-style-type: none"> • 8x anchor bracket assembly for roof anchoring
	520095	Anchor Bracket Kit Flashing and roof screws are NOT included. These components need to be selected based on specific roof construction.	Each	3.5 lbs.	<ul style="list-style-type: none"> • 1x anchor bracket assembly for roof anchoring



Warehouse Locations

RBI Solar | **Atlanta, GA Warehouse**

RBI Solar | Atlanta

1292 Logan Circle NW

Atlanta, GA 30318

P: +1 513-618-7240

E: Info@rbisolar.com

RBI Solar | **Temecula, CA Warehouse**

RBI Solar | Temecula

2771 Diaz Road

Suite B

Temecula, CA 92590

P: +1 513-618-7240

E: Info@rbisolar.com