

Non-reversing NEMA contactor, Size 8, Three phase full voltage, Contactor amp rating 1215A, 3 wire (NO aux included), 100-250V 50-60Hz/DC coil, Non-combination type, Enclosure NEMA type (open), No enclosure



Figure similar

General technical data

Weight [lb]	110 lb
Height x Width x Depth [in]	15.41 × 17.23 × 9.6 in
Protection against electrical shock	Main circuit (not finger-safe); Control circuit (finger-safe)
Installation altitude [ft] at height above sea level maximum	6560 ft
Ambient temperature [°F] during storage	-22 ... +149 °F
Ambient temperature [°F] during operation	-4 ... +104 °F
Ambient temperature during storage	-30 ... +65 °C
Ambient temperature during operation	-20 ... +40 °C
Country of origin	Switzerland

Horsepower ratings

Yielded mechanical performance [hp] for three-phase AC motor	
<ul style="list-style-type: none"> • at 200/208 V rated value • at 220/230 V rated value • at 460/480 V rated value 	<p>0 hp</p> <p>450 hp</p> <p>900 hp</p>

- at 575/600 V rated value

900 hp

Contactors

Number of NO contacts for main contacts	3
Operating voltage for main current circuit at AC at 60 Hz maximum	600 V
Operating current at AC at 600 V rated value	1215 A
Mechanical service life (switching cycles) of the main contacts typical	500000

Auxiliary contact

Number of NC contacts at contactor for auxiliary contacts	1
Number of NO contacts at contactor for auxiliary contacts	1
Number of total auxiliary contacts maximum	8
Contact rating of auxiliary contacts of contactor according to UL	10A@240VAC (A300), 2.5A@250VDC (Q300)

Coil

Type of voltage of the control supply voltage	AC/DC
Control supply voltage	
<ul style="list-style-type: none"> • at DC rated value • at AC at 60 Hz rated value • at AC at 50 Hz rated value 	100 ... 250 V 100 ... 250 V 100 ... 250 V
Holding power at AC minimum	17 W
Apparent pick-up power of magnet coil at AC	1900 V·A
Apparent holding power of magnet coil at AC	48 V·A
Operating range factor control supply voltage rated value of magnet coil	0.85 ... 1.1
Percental drop-out voltage of magnet coil related to the input voltage	55 %
Switch-on delay time	50 ... 80 ms
Off-delay time	35 ... 55 ms

Enclosure

Degree of protection NEMA rating of the enclosure	Open device (no enclosure)
Design of the housing	NA

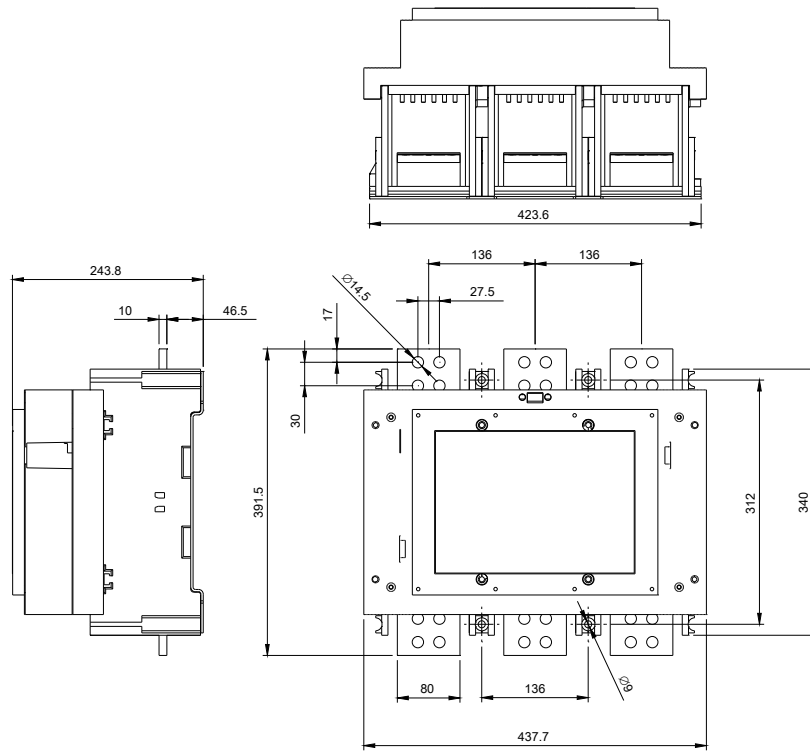
Mounting/wiring

Mounting position	Vertical
Mounting type	Surface mounting and installation
Type of electrical connection for supply voltage line-side	Bus bar (M12 screws/bolts)
Tightening torque [lbf·in] for supply	398 ... 398 lbf·in
Type of connectable conductor cross-sections at line-side at AWG conductors single or multi-stranded	1/0 AWG ... 750 MCM

Temperature of the conductor for supply maximum permissible	75 °C
Material of the conductor for supply	CU
Type of electrical connection for load-side outgoing feeder	bus bar (M12 screws/bolts)
Tightening torque [lbf·in] for load-side outgoing feeder	398 ... 398 lbf·in
Type of connectable conductor cross-sections at AWG conductors for load-side outgoing feeder single or multi-stranded	1/0 AWG ... 750 MCM
Temperature of the conductor for load-side outgoing feeder maximum permissible	75 °C
Material of the conductor for load-side outgoing feeder	CU
Type of electrical connection of magnet coil	Screw-type terminals
Tightening torque [lbf·in] at magnet coil	7 ... 10 lbf·in
Type of connectable conductor cross-sections of magnet coil at AWG conductors single or multi-stranded	2x (18 ... 14 AWG)
Temperature of the conductor at magnet coil maximum permissible	75 °C
Material of the conductor at magnet coil	CU
Type of electrical connection at contactor for auxiliary contacts	Screw-type terminals
Tightening torque [lbf·in] at contactor for auxiliary contacts	9 ... 9 lbf·in
Type of connectable conductor cross-sections at contactor at AWG conductors for auxiliary contacts single or multi-stranded	2x (18 ... 14 AWG)
Temperature of the conductor at contactor for auxiliary contacts maximum permissible	75 °C
Material of the conductor at contactor for auxiliary contacts	CU

Short-circuit current rating

Design of the fuse link for short-circuit protection of the main circuit required	85kA@600V (Class R or L)
Design of the short-circuit trip	Thermal magnetic circuit breaker
Maximum short-circuit current breaking capacity (Icu)	
• at 240 V	0 A
• at 480 V	0 A
• at 600 V	0 A



last modified:

12/07/2016