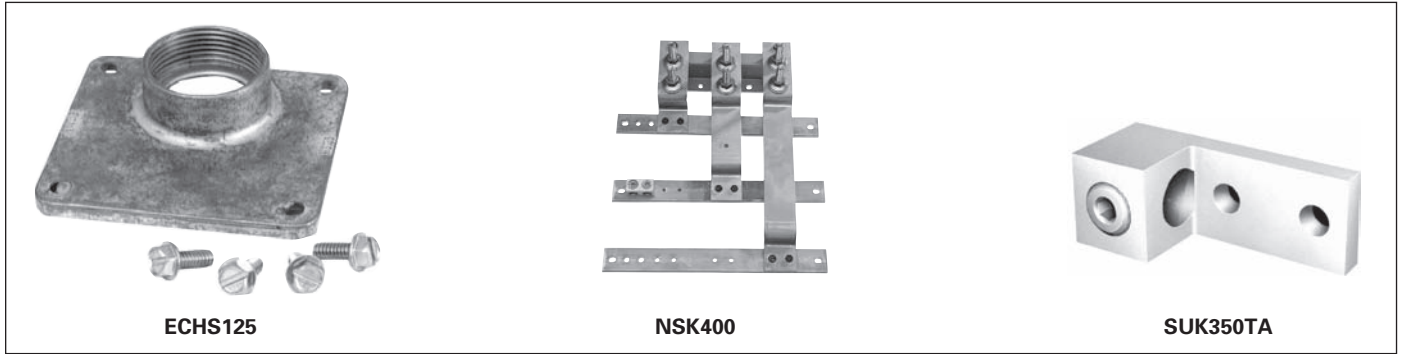


# Meter Centers

## Uni-PAK Metering: Accessories

• Revised •  
02/18/14

*Selection*



ECHS125

NSK400

SUK350TA

2  
METER  
CENTERS

### Uni-PAK Lug Kits

Catalog Number	Description
<b>Mechanical Lugs for NEMA Stud Kits</b>	
SUK350TA	(2) #6-350 kcmil
SUK600TA	(1) #2-600 kcmil
SUK1000TA	(2) 500-1000 kcmil
<b>Uni-PAK NEMA Stud Kits (WEP ONLY)<sup>②</sup></b>	
WPSK400	Fits 300 - 400A
WPSK600	Fits 500 - 600A
WPSK800	800A
WPSK1000	1000A
<b>Uni-PAK Alternate Lug Kits (WP ONLY)</b>	
WPLK2400	400A Bus Lug Kit (2) #4-250
WPLK2600	600A Bus Lug Kit (3) #6-250

### Old PAK Accessories

Description	Catalog Number	
<b>5th Jaw Kit<sup>①</sup></b>		
All Types	Grounded	ECMM5J
	Insulated	ECMMI5J
<b>Bypass Kits<sup>①</sup></b>		
Horn Bypass Kit	ECHBK	
<b>NEMA Stud Kits (Meets EUSERC Requirements)<sup>①</sup></b>		
400 Amp Bus NEMA Stud Kit	NSK400	
600 Amp Bus NEMA Stud Kit <sup>②</sup>	NSK600	
<b>Alternate Lug Kits<sup>①</sup></b>		
400 Amp Bus Lug Kit (2) #4-250	PLK400	
600 Amp Bus Lug Kit (3) #6-250	PLK600	

### Accessories for All-In-One Units

Description	Catalog Number
<b>Lugs for NEMA Stud Kits<sup>①</sup></b>	
(2) #6-350 kcmil	SUK350TA
(1) #2-600 kcmil	SUK600TA
(2) #500-1000 kcmil	SUK1000TA
<b>NEMA Stud Kits<sup>⑤</sup></b>	
400 Amp Bus NEMA Stud Kit	WPSK400
600 Amp Bus NEMA Stud Kit	WPSK600
800 Amp Bus NEMA Stud Kit	WPSK800
1000 Amp Bus NEMA Stud Kit	WPK1000
<b>Type "HD" Conduit Hubs</b>	
2" Conduit Hub <sup>④</sup>	EC56854
2½" Conduit Hub <sup>④</sup>	EC56855
3" Conduit Hub	EC56856
3½" Conduit Hub	EC56857
4" Conduit Hub	EC56858
Closure Plate	EC56933S
<b>Type "RX" Conduit Hubs</b>	
¾" Conduit Hub	EC38594
1" Conduit Hub	EC38596
1¼" Conduit Hub	EC38597
1½" Conduit Hub	EC38598
2" Conduit Hub	EC38599
2½" Conduit Hub	EC38600
Closure Plate	EC38595
Adapter plate for HD/RX <sup>③</sup>	EC9747-1113
<b>Cover Plate</b>	
Plastic Ring Style <sup>①</sup>	ECPP
Plastic Ringless Style	ECPP3
<b>Filler Plates</b>	
1" Filler Plate	ECQF3
4" to 2" Filler Plate	ECPP3U <sup>①</sup>

① Not for use on lever bypass units.

② Order NSK600 and PLK600 kits for use with 800 Amp PAK. CU Cable only approved with 800A device.

③ Use Adapter plate with RX hubs for PAK units.

④ These items made of Adapter plate and equivalent RX hub.

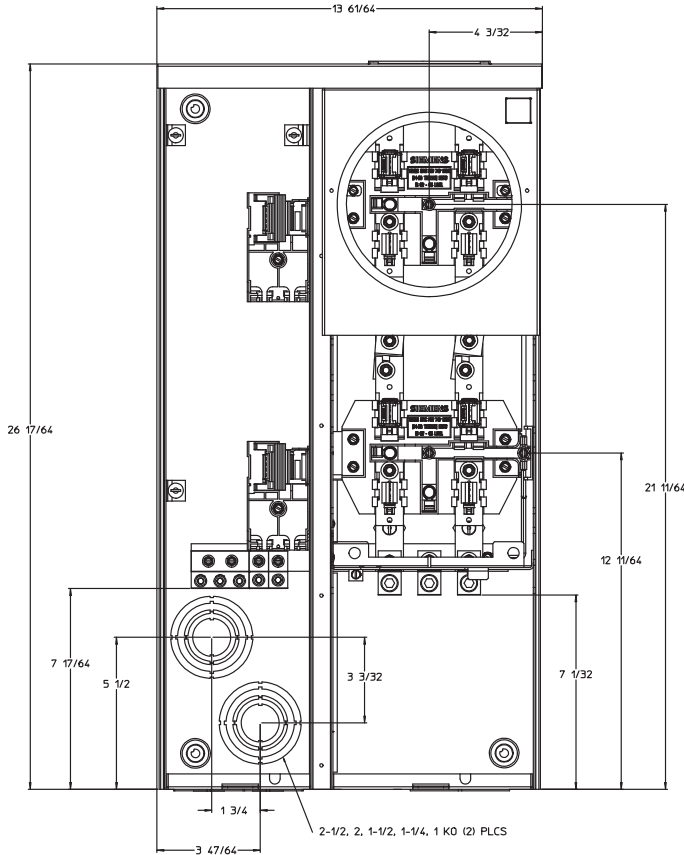
⑤ For use on WEP units only

Multi-family  
Metering

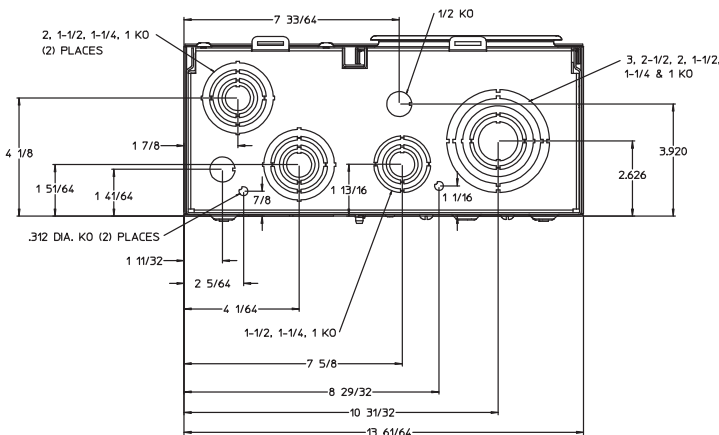
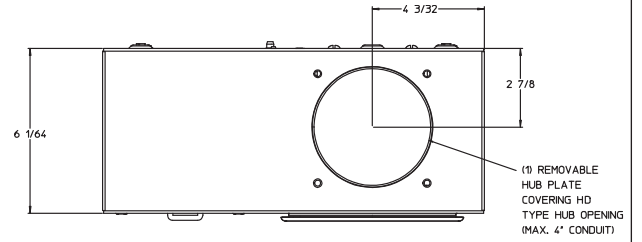
# Meter Centers

## Uni-PAK Metering: Dimensional & Knockout Diagrams

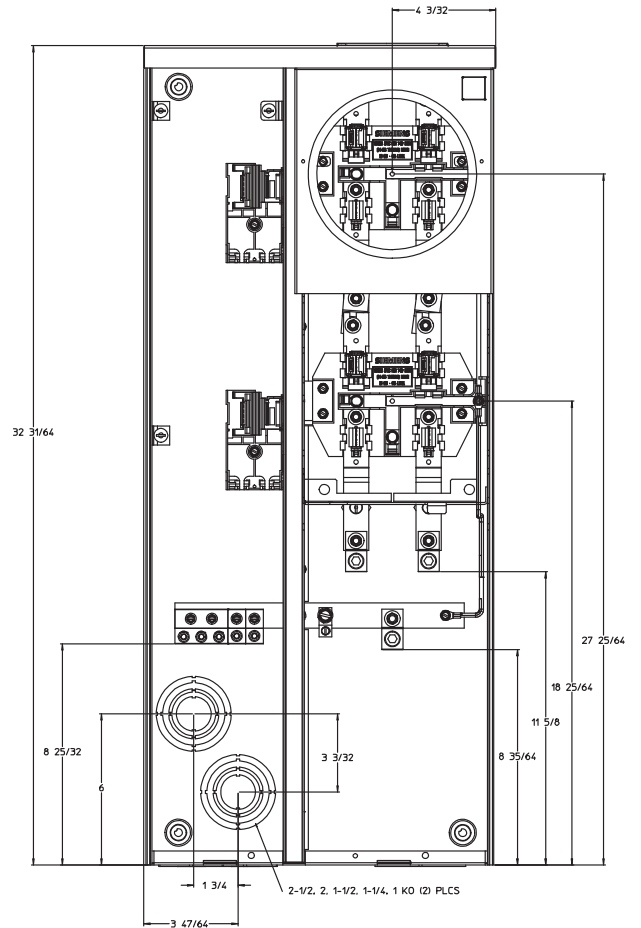
WP2211



Top view for  
WP2211 and WEP2211



Bottom view for  
WP2211 and WEP2211



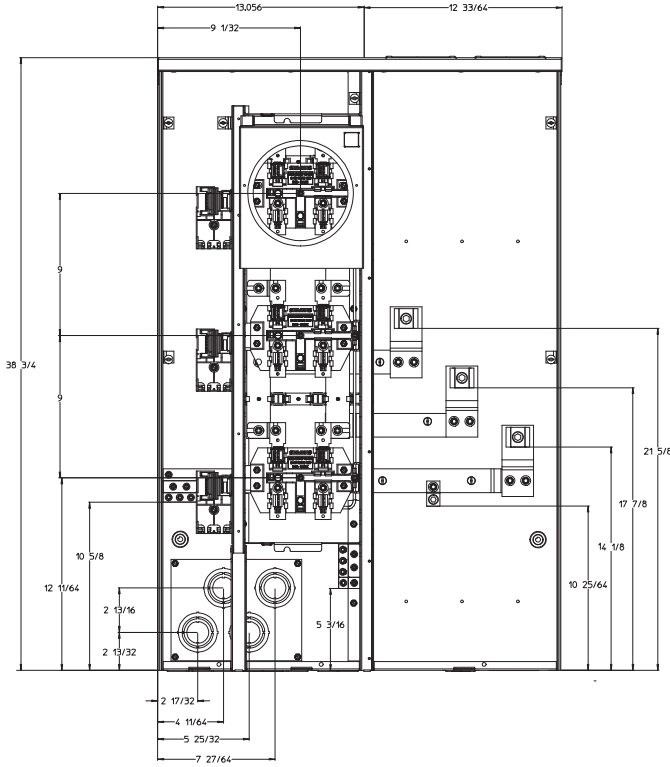
WEP2211

# Meter Centers

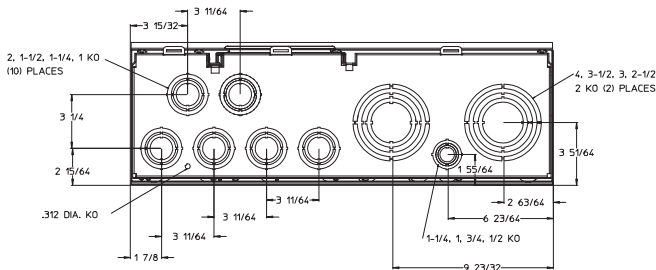
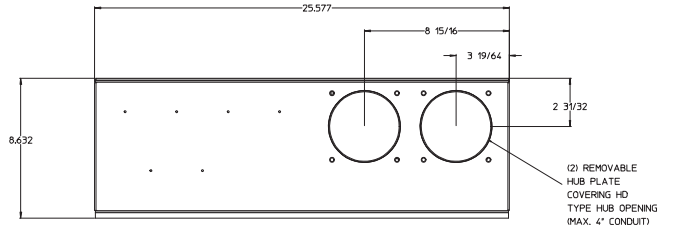
## Uni-PAK Metering: Dimensional & Knockout Diagrams

• Revised •  
12/15/11

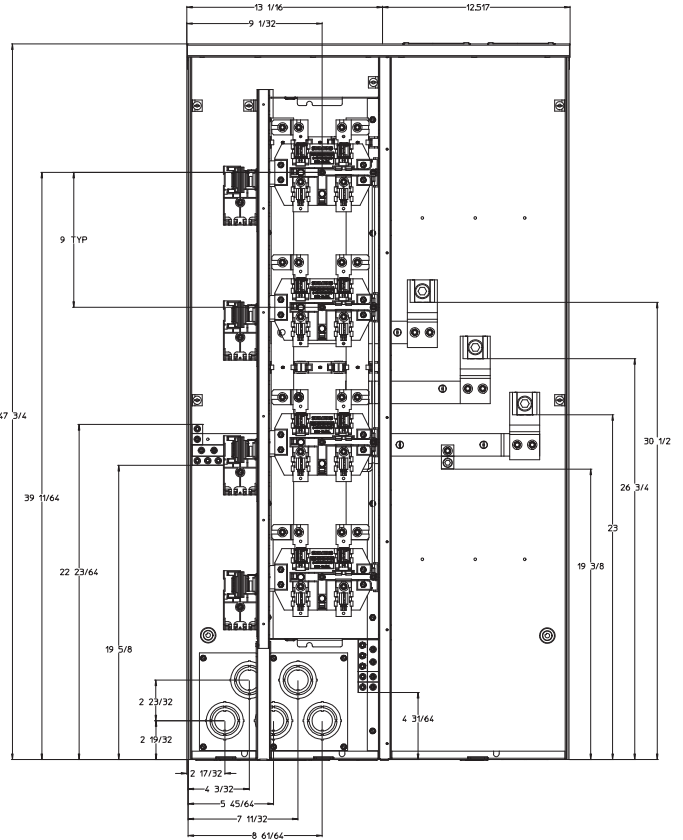
**WP3311  
WEP3311**



**Top view for  
WP3311, WP4411, WEP3311 and WEP4411**



**Bottom view for  
WP3311, WP4411, WEP3311 and WEP4411**

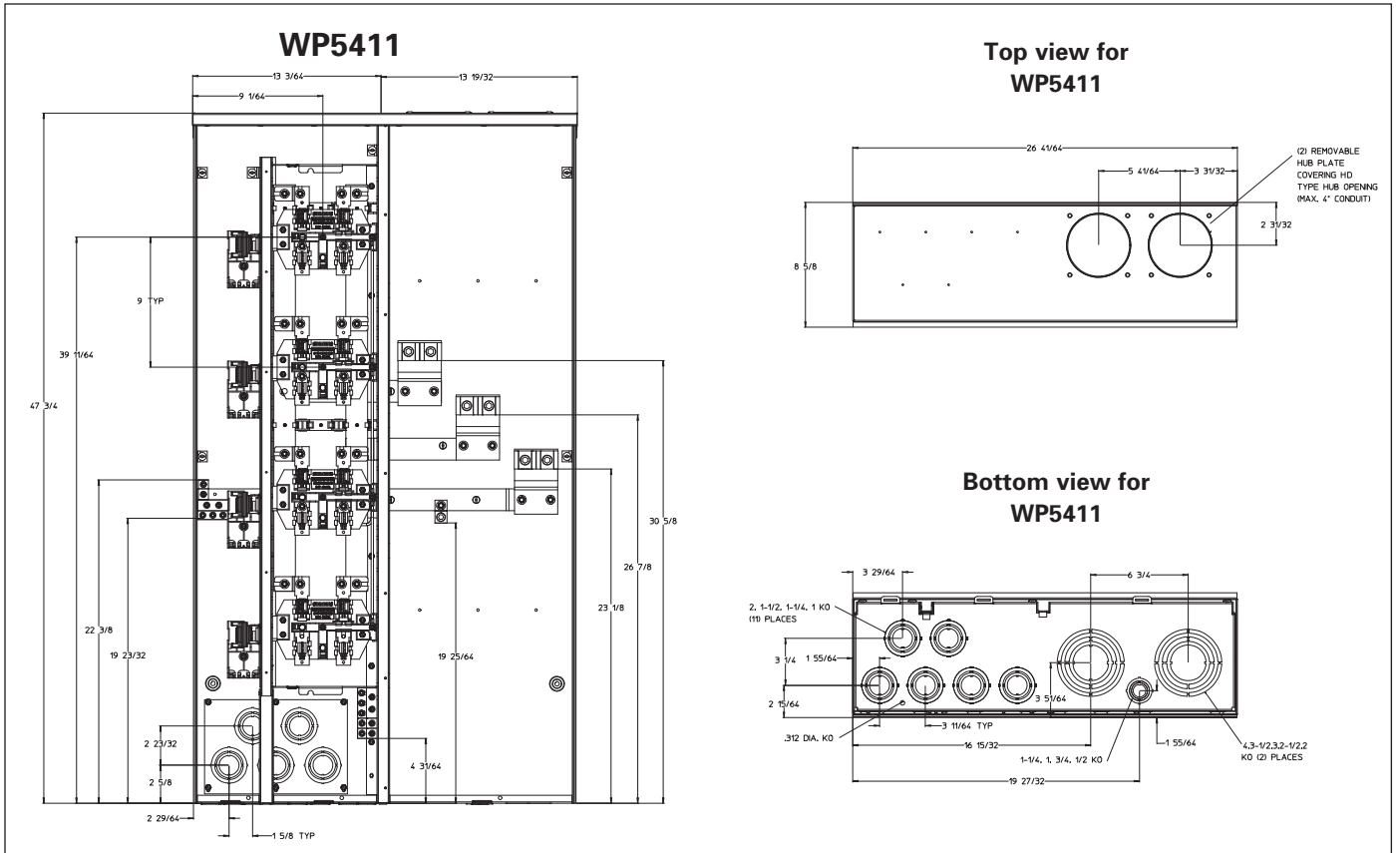


**WP4411  
WEP4411**

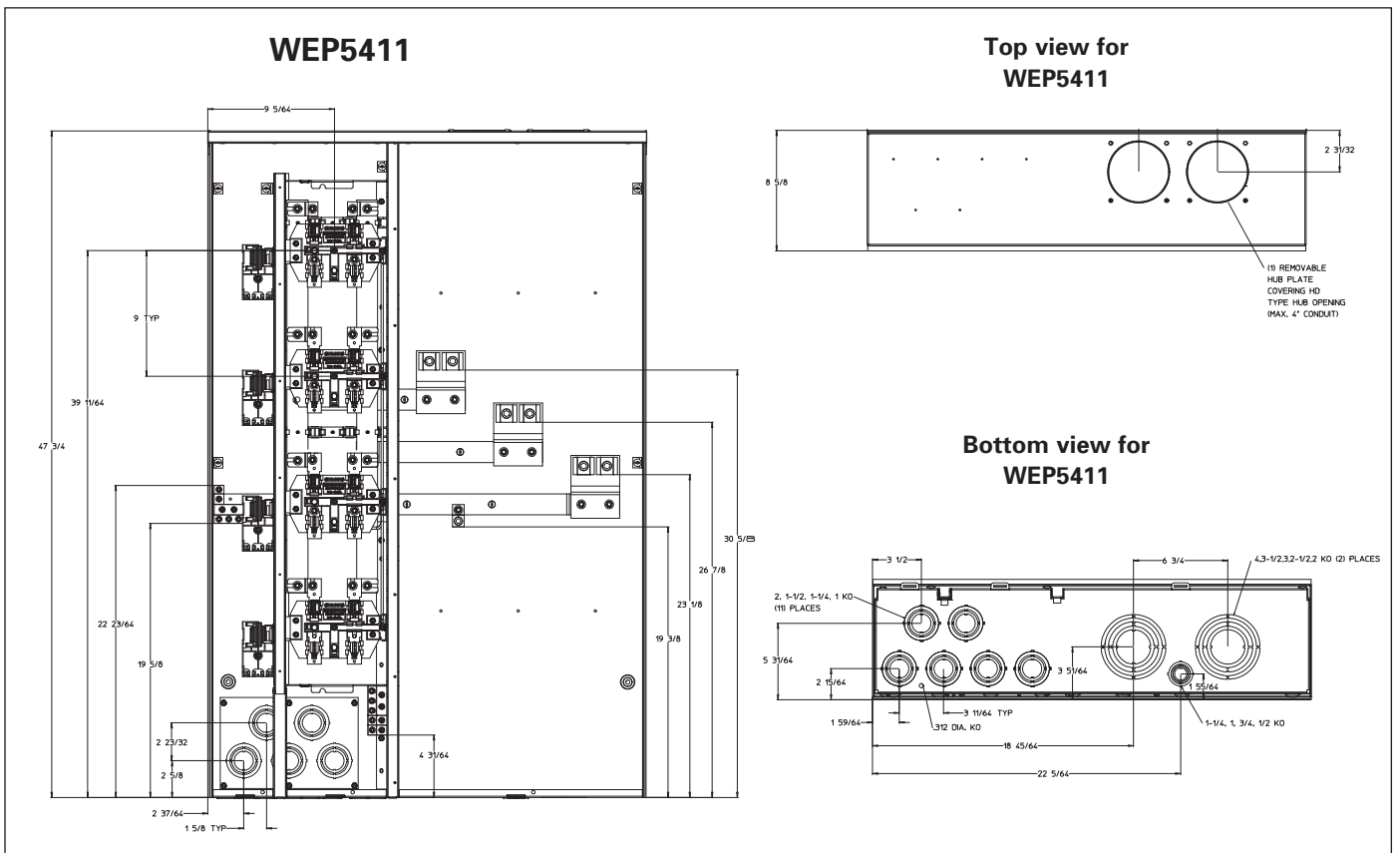
# Meter Centers

## Uni-PAK Metering: Dimensional & Knockout Diagrams

METER CENTERS  
2



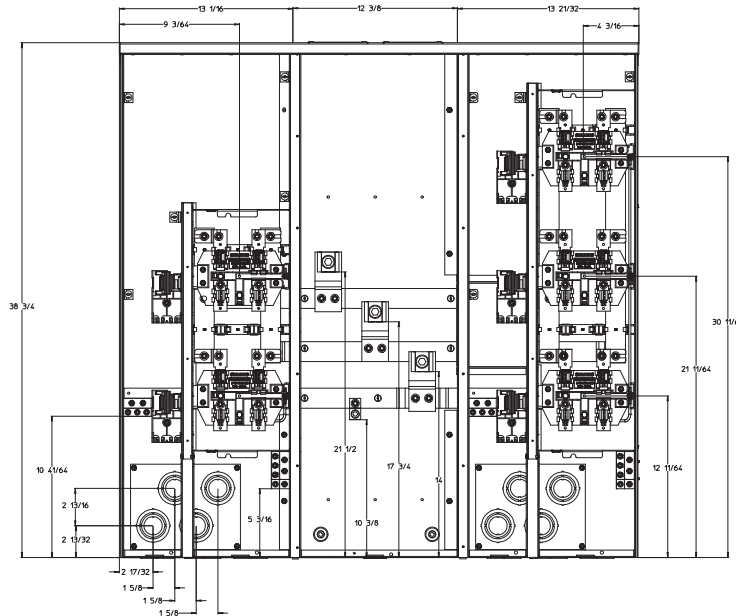
Multi-family Metering



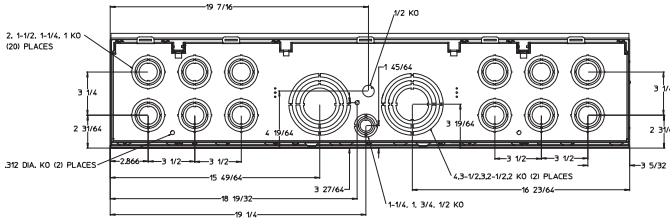
# Meter Centers

## Uni-PAK Metering: Dimensional & Knockout Diagrams

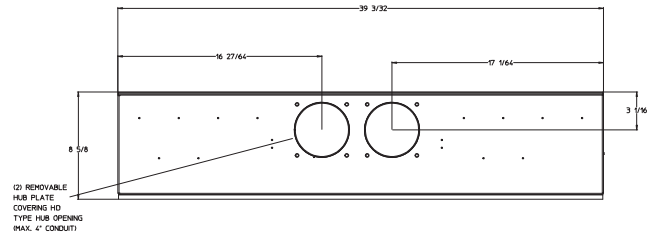
**WP4511  
WEP4511**



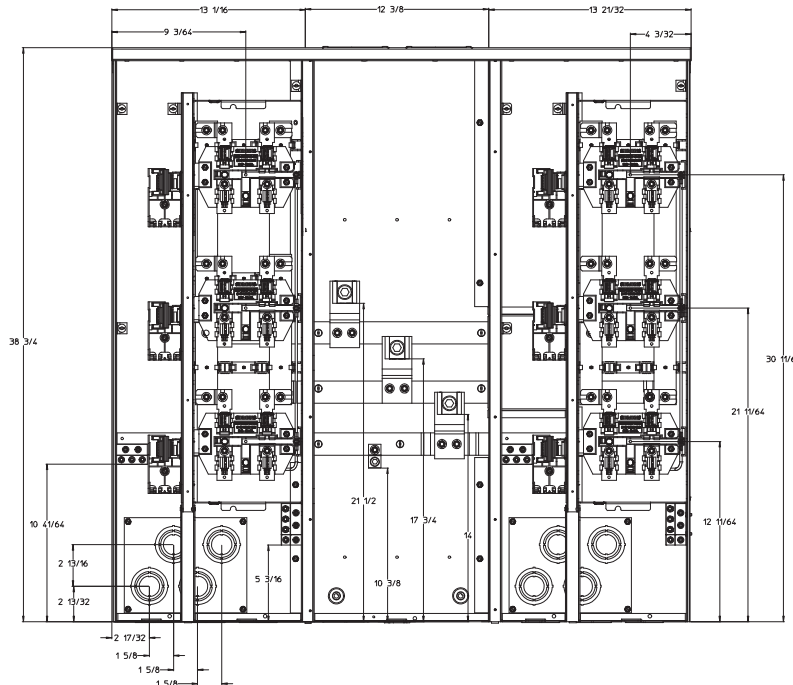
**Bottom view for  
WP4511, WP4611, WEP4511 and WEP4611**



**Top view for  
WP4511, WP4611, WEP4511 and WEP4611**



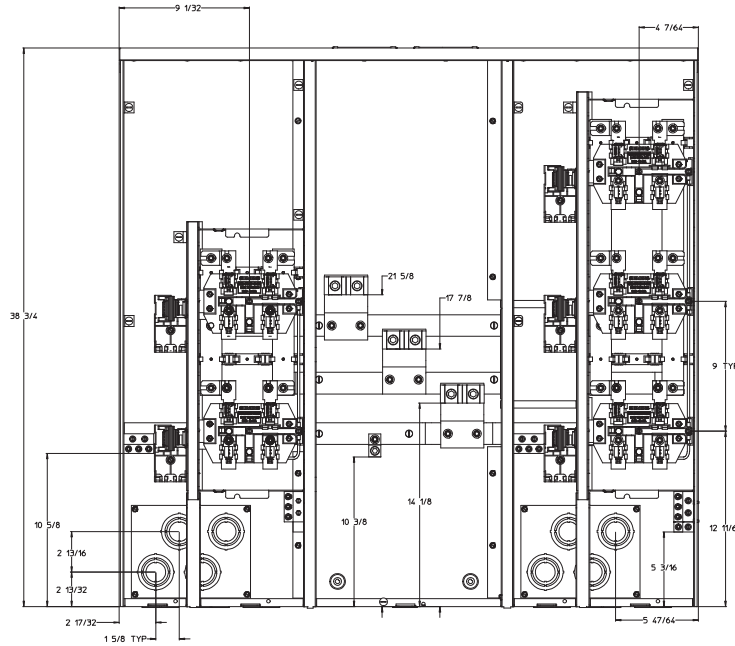
**WP4611  
WEP4611**



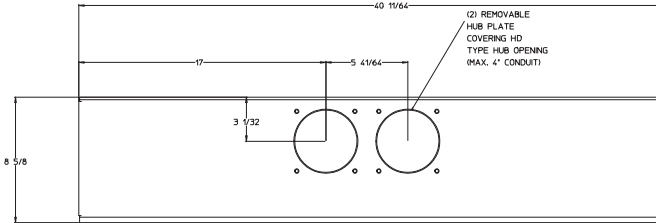
# Meter Centers

## Uni-PAK Metering: Dimensional & Knockout Diagrams

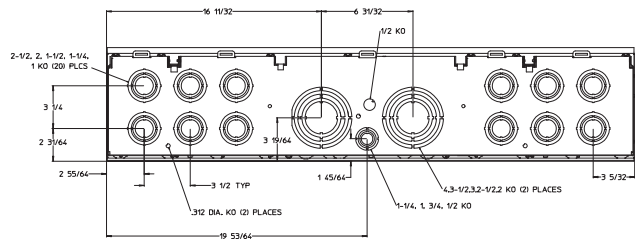
WP6511



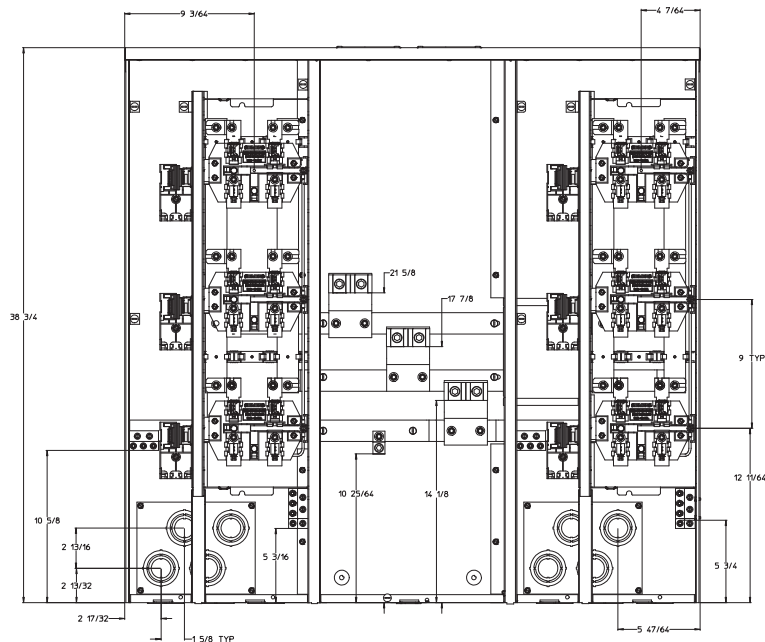
Top view for WP6511 and WP6611



Bottom view for WP6511 and WP6611



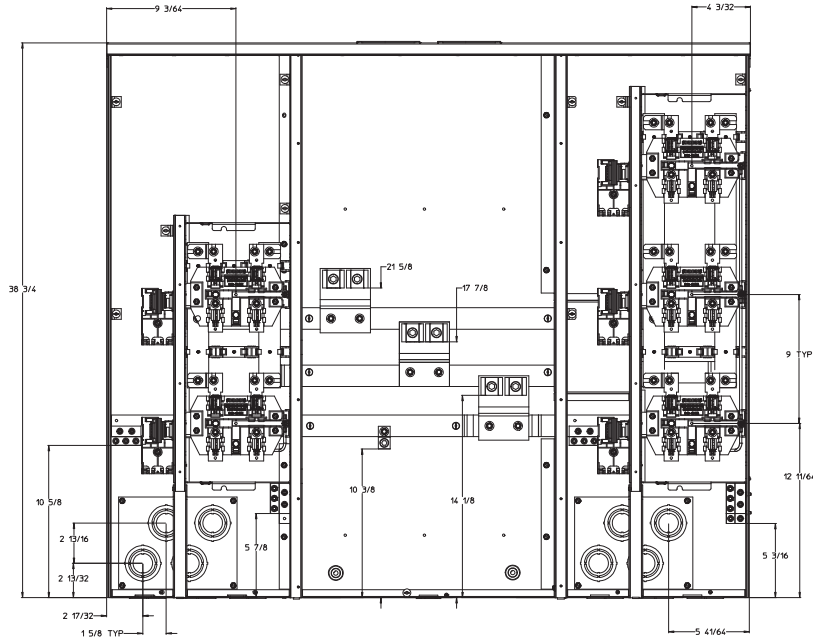
WP6611



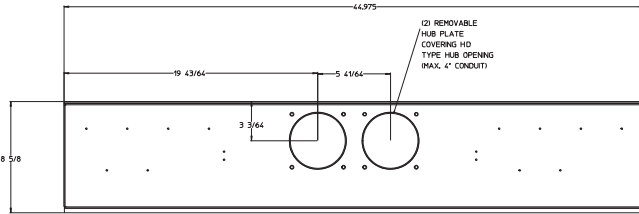
# Meter Centers

## Uni-PAK Metering: Dimensional & Knockout Diagrams

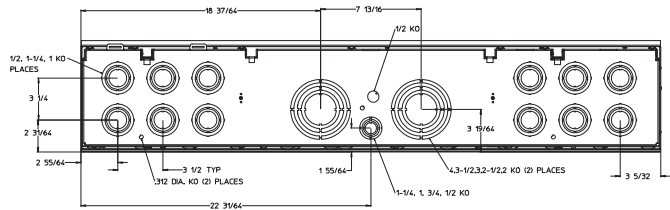
WEP6511



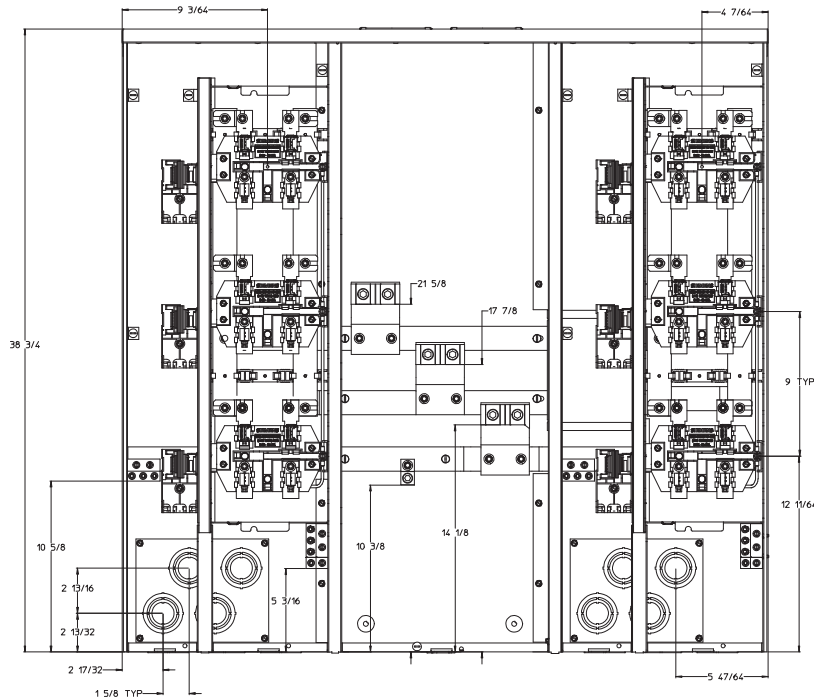
Top view for WEP6511 and WEP6611



Bottom view for WEP6511 and WEP6611



WEP6611

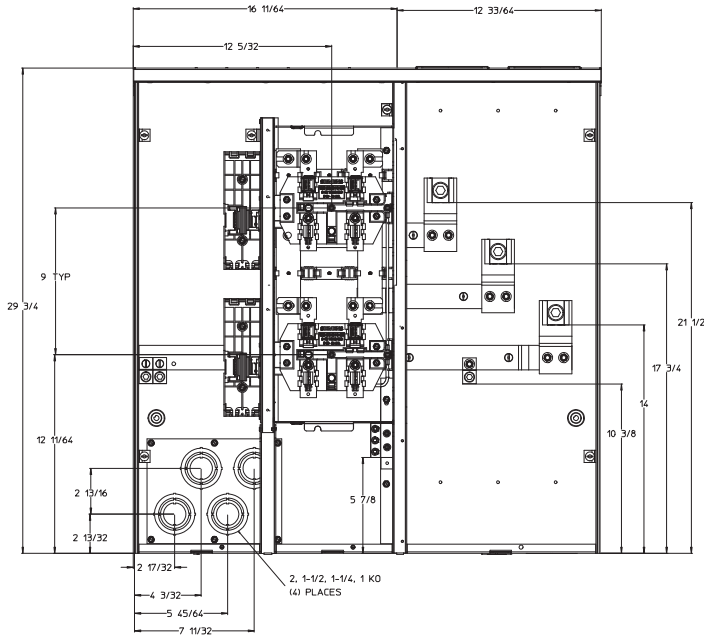


# Meter Centers

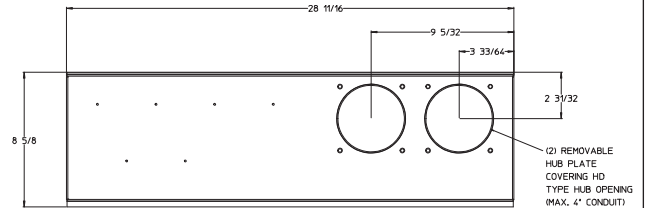
## Uni-PAK Metering: Dimensional & Knockout Diagrams

METER CENTERS  
2

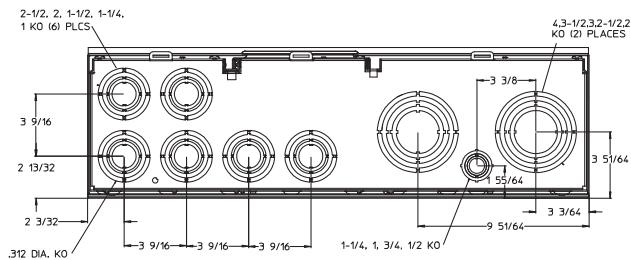
**WP4212  
WEP4212**



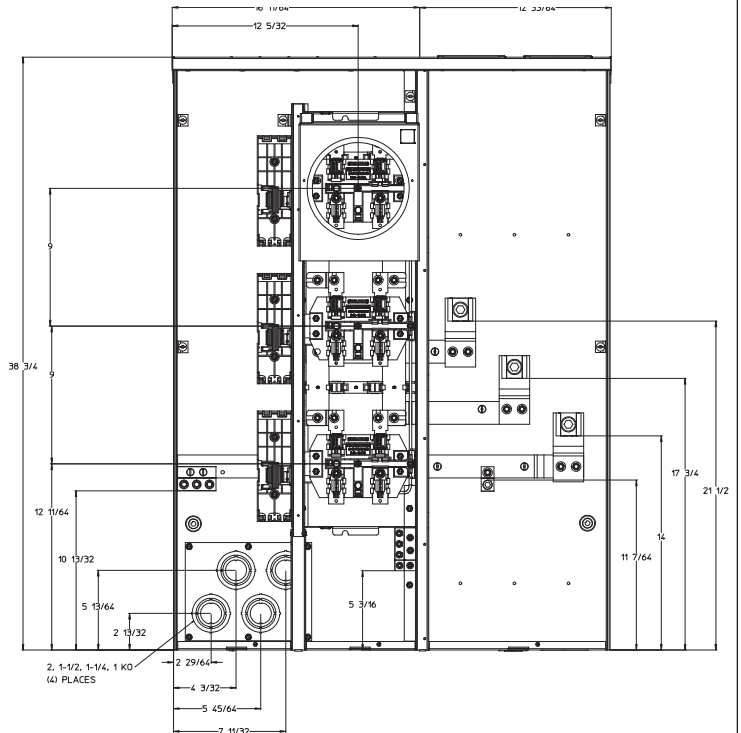
Top view for  
WP4212, WEP4212, WP4312 and WEP4312



Multi-family  
Metering



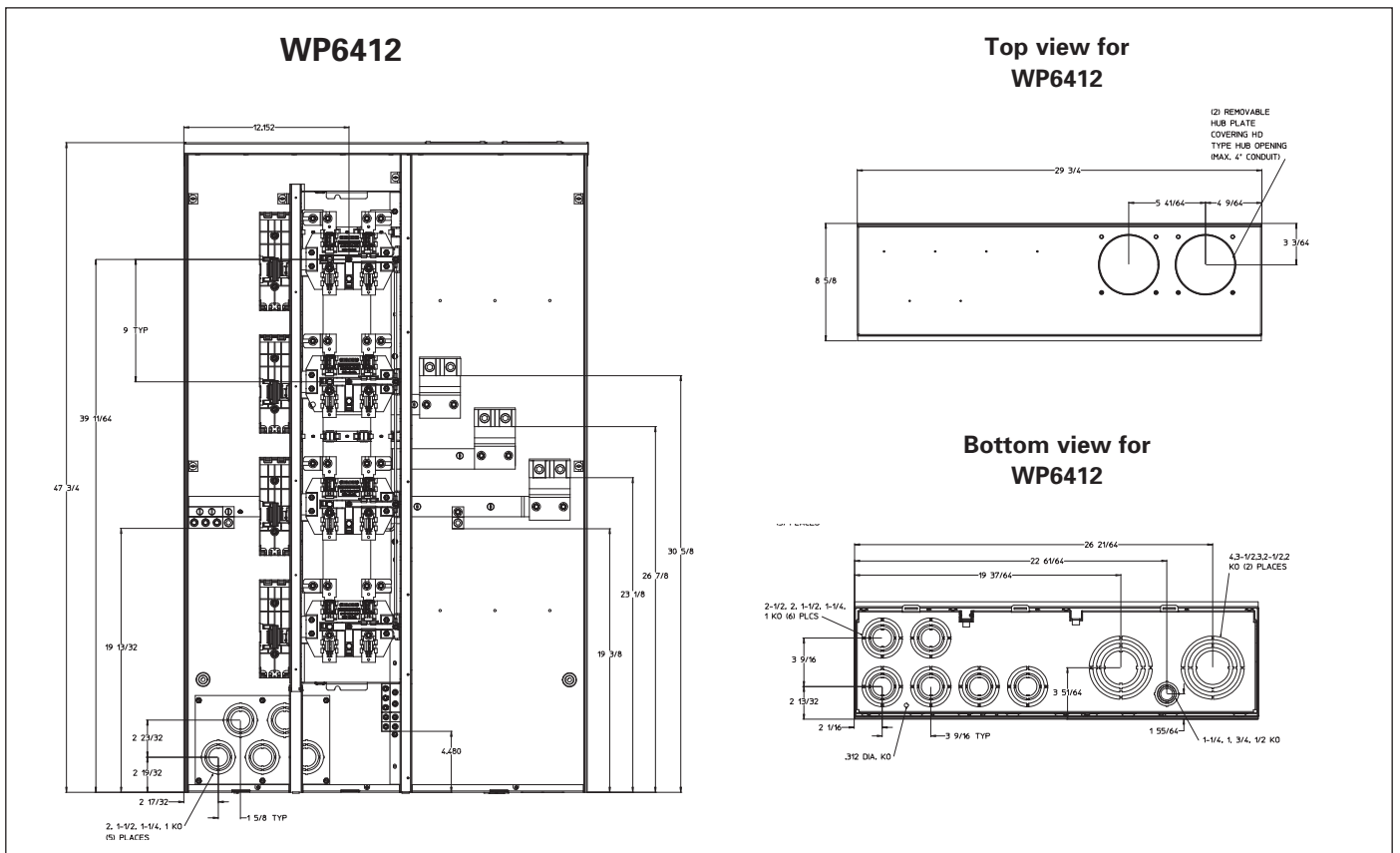
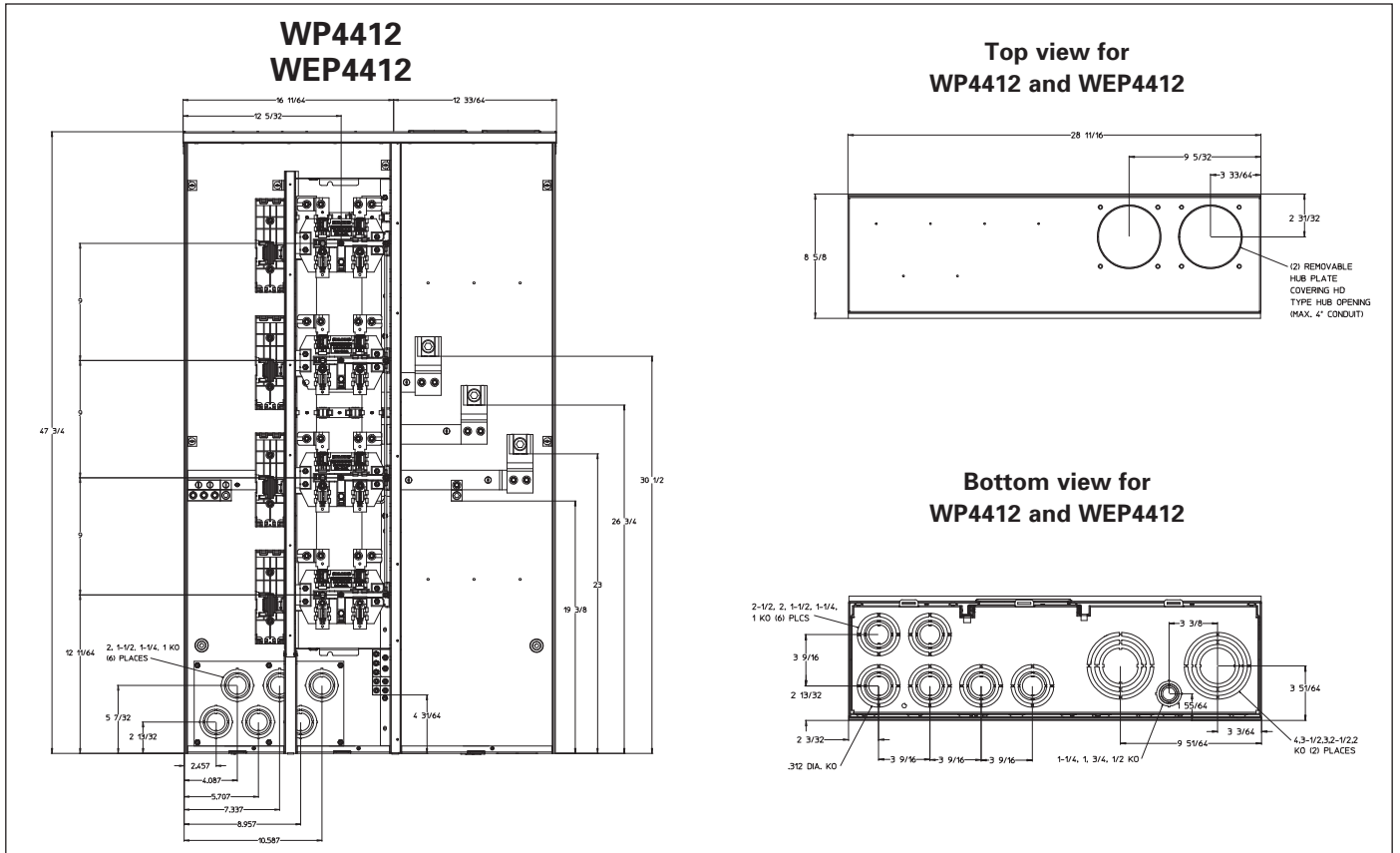
Bottom view for  
WP4212, WEP4212, WP4312 and WEP4312



**WP4312  
WEP4312**

# Meter Centers

## Uni-PAK Metering: Dimensional & Knockout Diagrams



• Revised •  
12/15/11

# Meter Centers

## Uni-PAK Metering: Dimensional & Knockout Diagrams

### WEP6412

12 5/32  
9 TYP  
39 1/64  
47 3/4  
19 13/32  
2 5-1/2, 1-1/4, 1 KO (2) PLACES  
2 23/32  
2 19/32  
2 17/32  
1 5/8 TYP  
4 3/16  
26 7/8  
23 1/8  
30 5/8

### Top view for WEP6412

34 9/16  
5 4/64  
6 7/32  
2 45/16  
① REMOVABLE HUB PLATE COVERING HO TYPE HUB OPENING (MAX. 4" CONDUIT)

### Bottom view for WEP6412

21 49/64  
6 3/4  
2-1/2, 2, 1-1/2, 1-1/4, 1 KO (6) PLCS  
3 9/16  
2 15/32  
2 9/64  
3 9/16 TYP  
3/2 DIA. KO  
1 55/64  
4.3-1/2, 3.2-1/2, 2 KO (2) PLACES  
1-1/4, 1 3/4, 1/2 KO

### WP8612 WEP8612

12 5/32  
4 3/32  
38 3/4  
10 15/32  
2 1-1/2, 1-1/4, 1 KO (2) PLACES  
2 15/16  
2 15/32  
2 35/64  
1 5/8 TYP  
21 1/2  
17 3/4  
9 TYP  
12 1/64  
5 5/16  
8 3/4

### Top view for WP8612 and WEP8612

51 3/8  
22 3/64  
5 4/64  
2 9/8  
① REMOVABLE HUB PLATE COVERING HO TYPE HUB OPENING (MAX. 4" CONDUIT)

### Bottom view for WP8612 and WEP8612

21 23/32  
7 15/16  
1/2 KO  
2-1/2, 2, 1-1/2, 1-1/4, 1 KO (2) PLCS  
3 5/8  
2 1/4  
2 9/64  
3/2 DIA. KO (2) PLACES  
4.3-1/2, 3.2-1/2, 2 KO (2) PLACES  
1-1/4, 1 3/4, 1/2 KO  
3 17/32  
25 9/16

METER CENTERS 2

Multi-family Metering

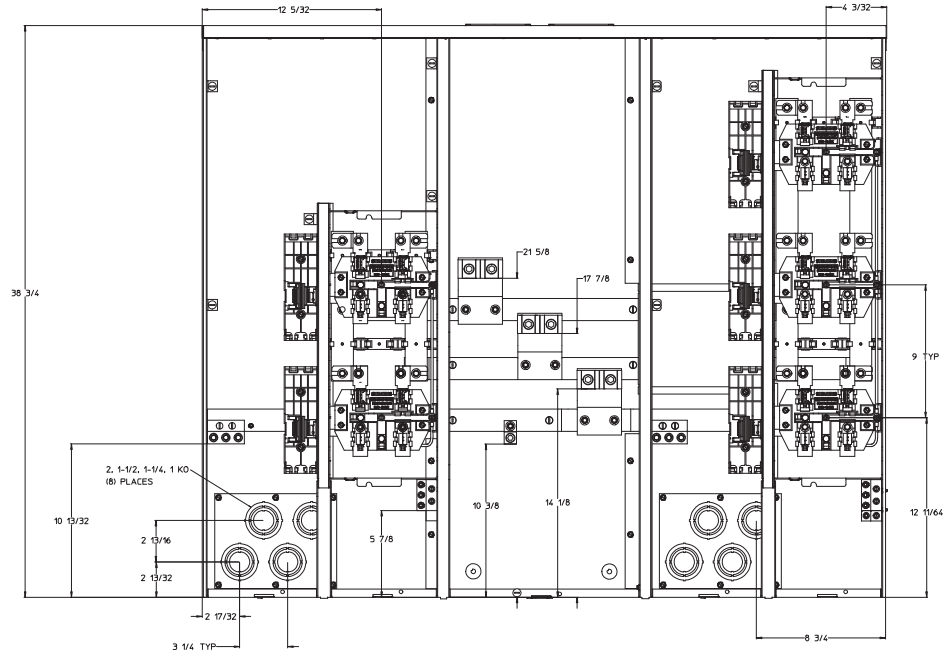
2-160

Siemens Industry, Inc. SPEEDFAX™ 2011 Product Catalog

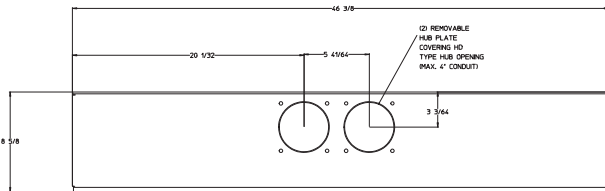
# Meter Centers

## Uni-PAK Metering: Dimensional & Knockout Diagrams

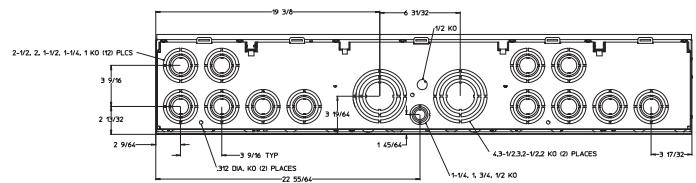
WP6512



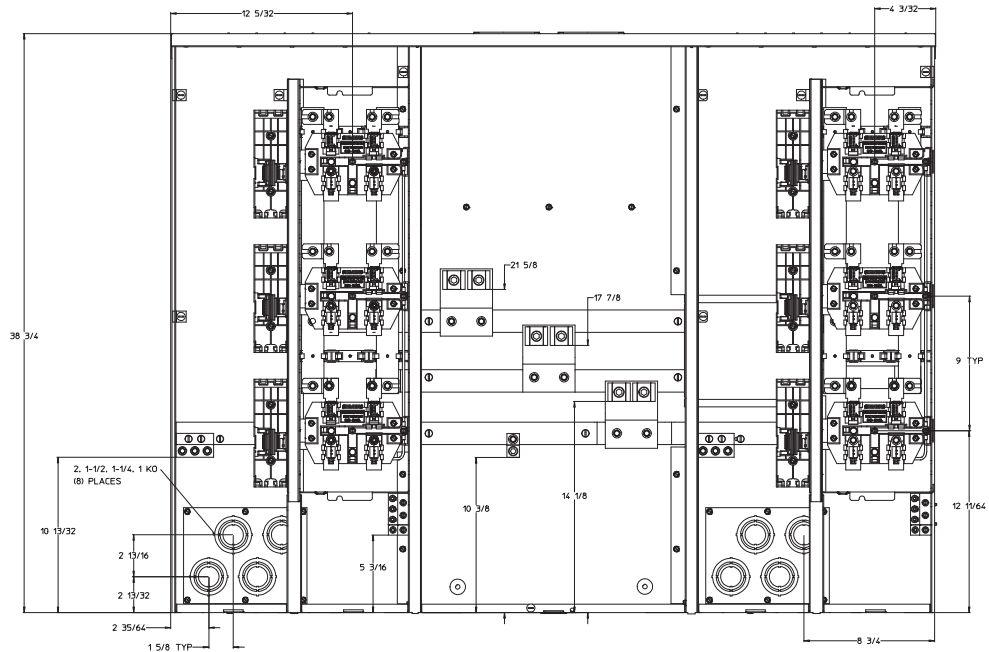
Top view for WP6512 and WP6612



Bottom view for  
WP6512 and WP6612



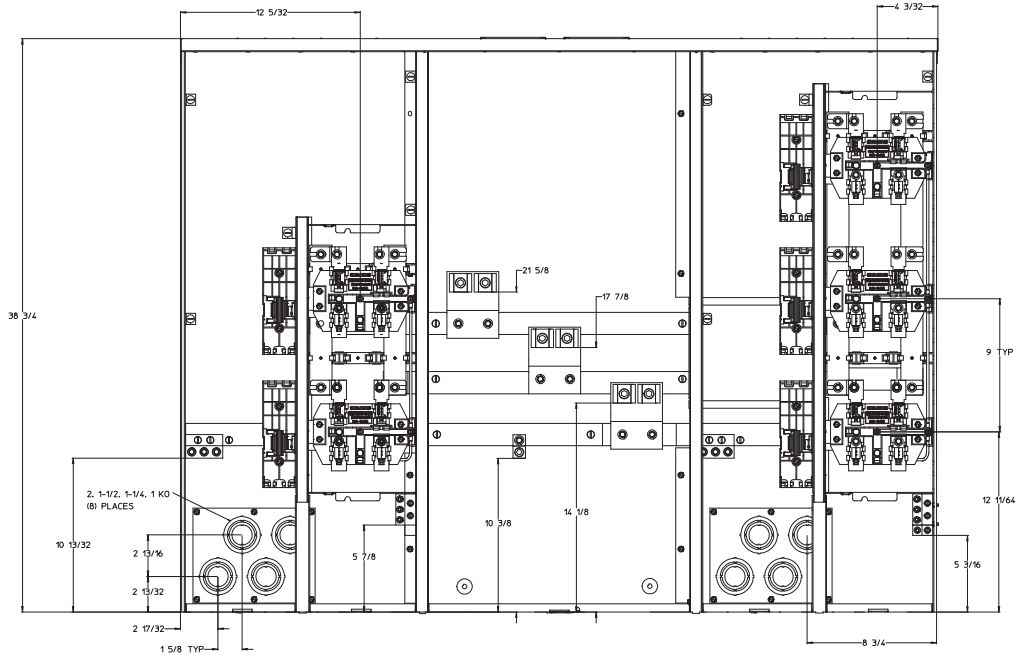
WP6612



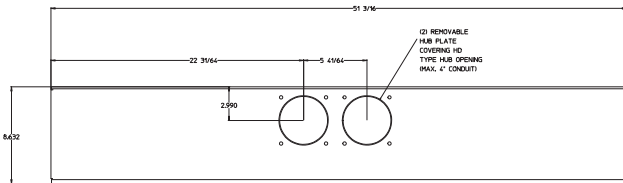
# Meter Centers

## Uni-PAK Metering: Dimensional & Knockout Diagrams

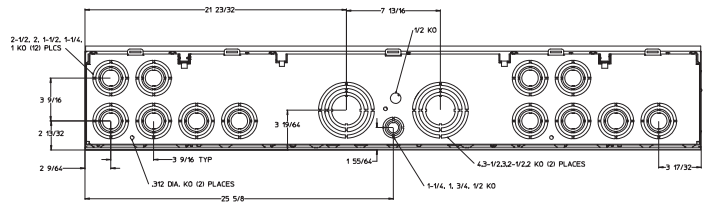
WEP6512



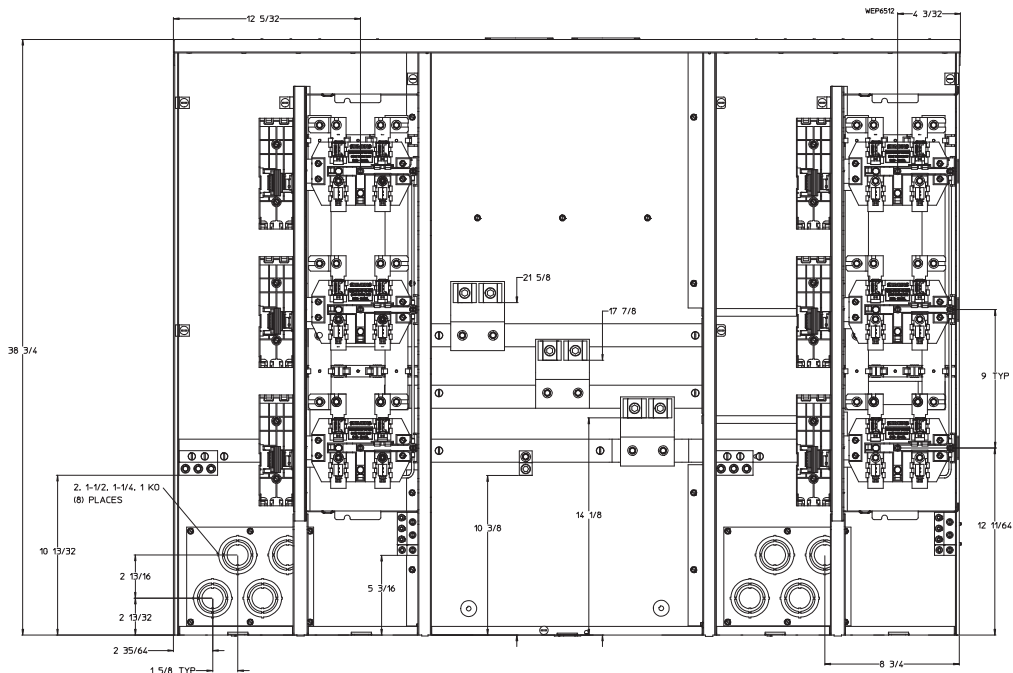
Top view for WEP6512 and WEP6612



Bottom view for WEP6512 and WEP6612



WEP6612



# Meter Centers

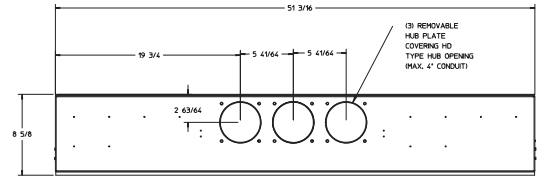
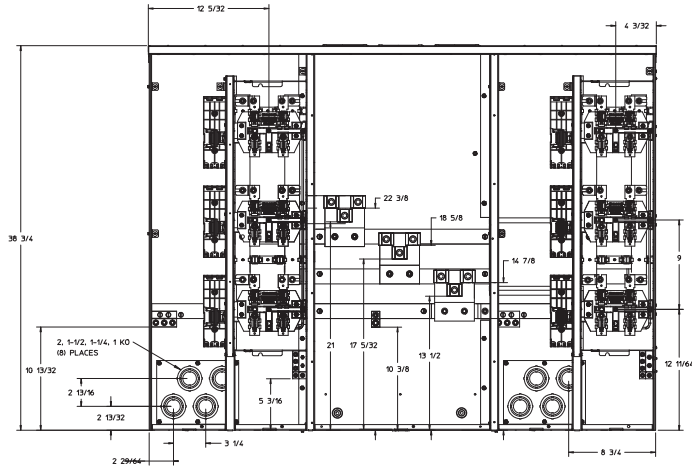
## Uni-PAK Metering: Dimensional & Knockout Diagrams

• Revised •  
12/15/11

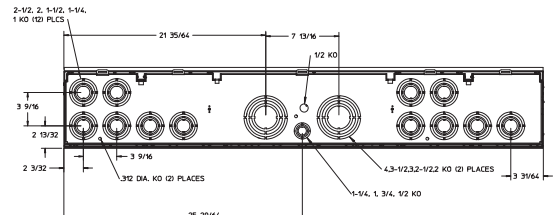
2  
METER  
CENTERS

**WP10612**  
**WEP10612**

**Top view for**  
**WP10612**

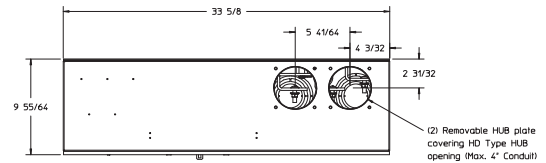
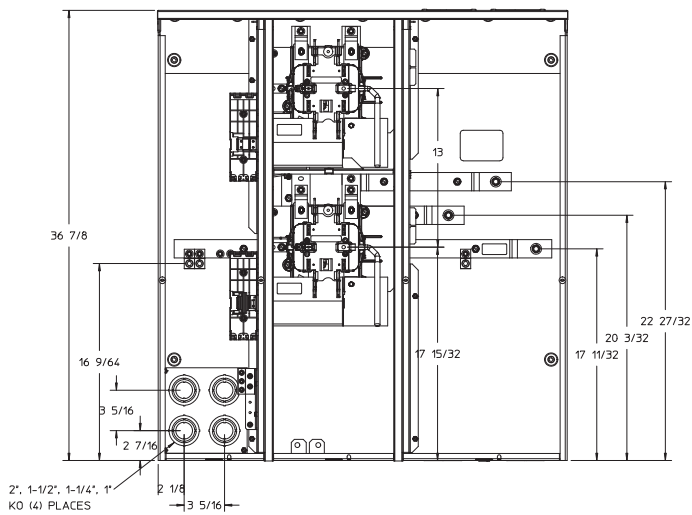


**Bottom view for**  
**WP10612**

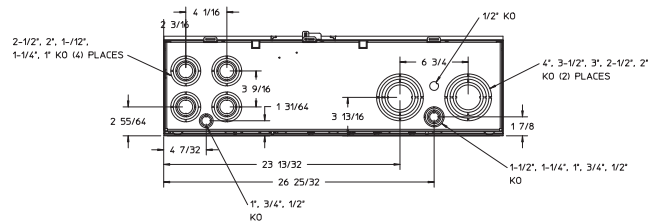


**WPL4212**

**Top view for**  
**WPL4212**



**Bottom view for**  
**WPL4212**



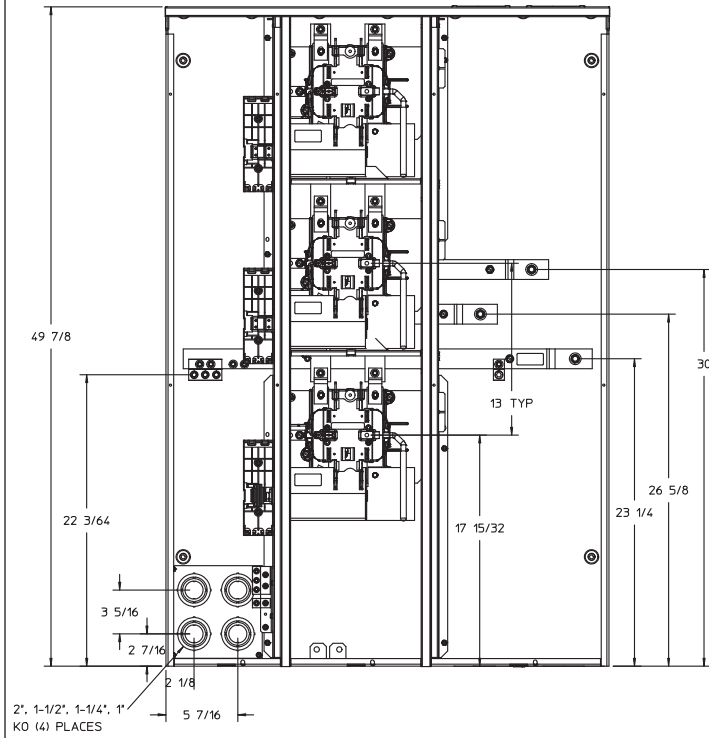
Multi-family  
Metering

# Meter Centers

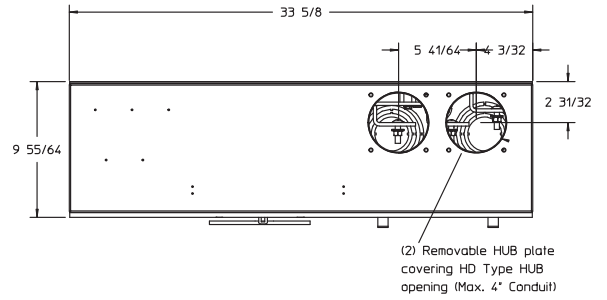
## Uni-PAK Metering: Dimensional & Knockout Diagrams

METER CENTERS  
2

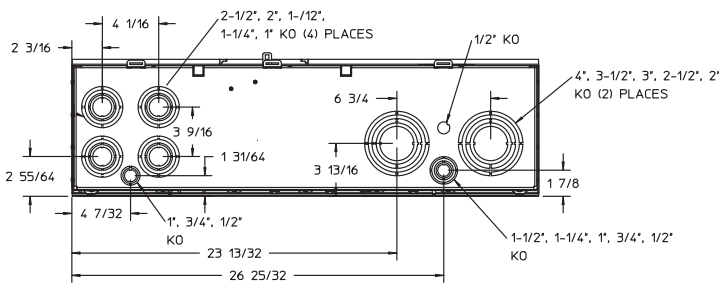
WPL4312



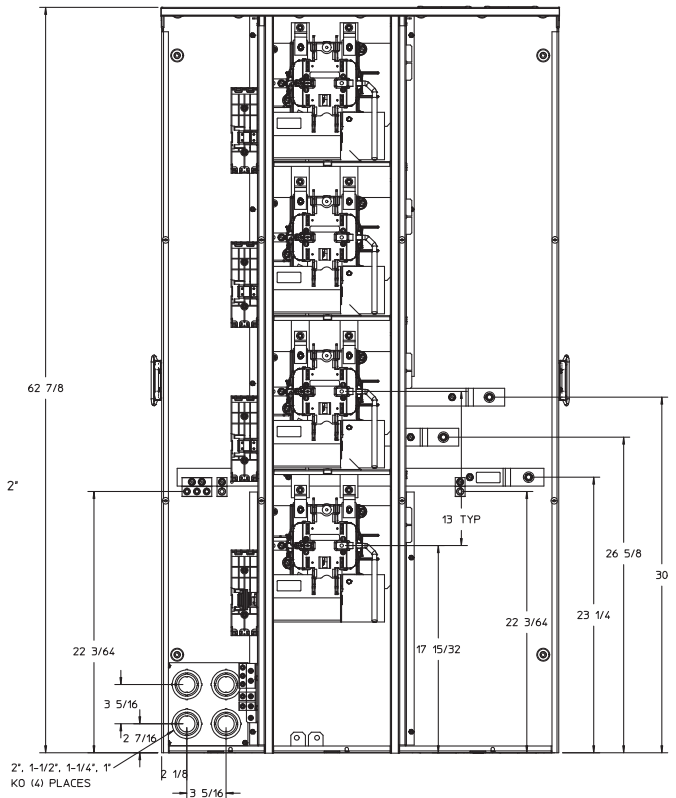
Top view for  
WPL4312 and WPL4412



Multi-family  
Metering



Bottom view for  
WPL4312 and WPL4412



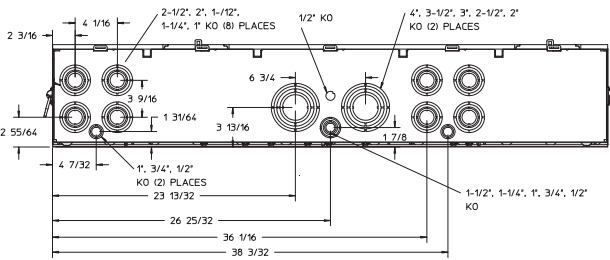
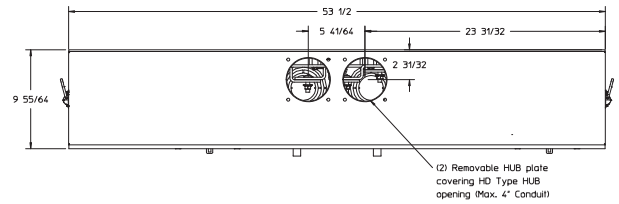
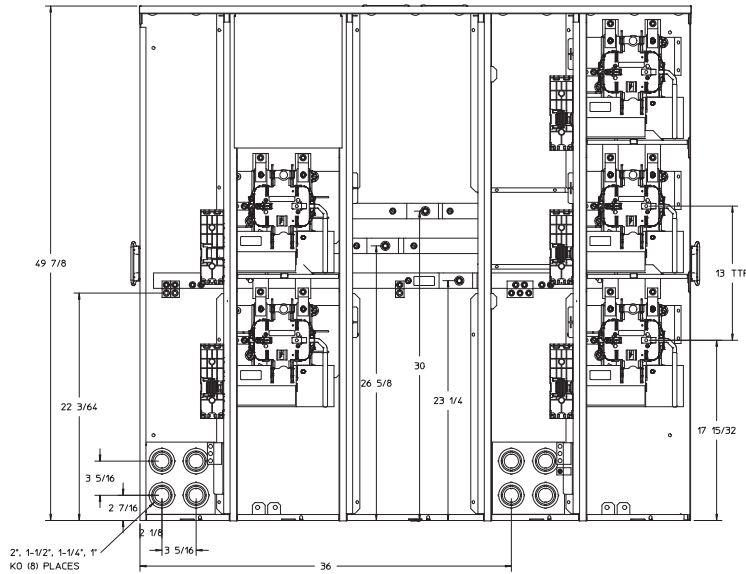
WPL4412

# Meter Centers

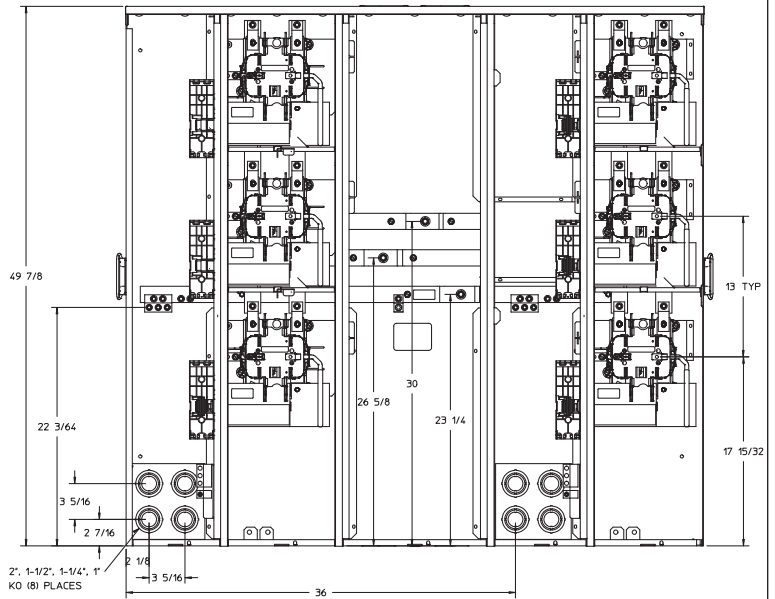
## Uni-PAK Metering: Dimensional & Knockout Diagrams

**WPL6512**

**Top view for  
WPL6512 and WPL6612**



**Bottom view for  
WPL6512 and WPL6612**

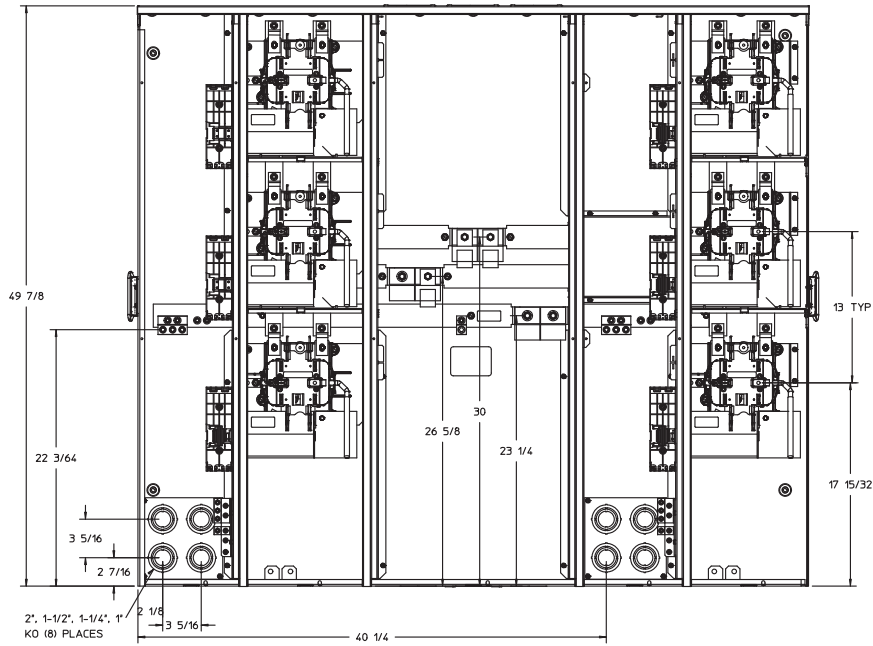


**WPL6612**

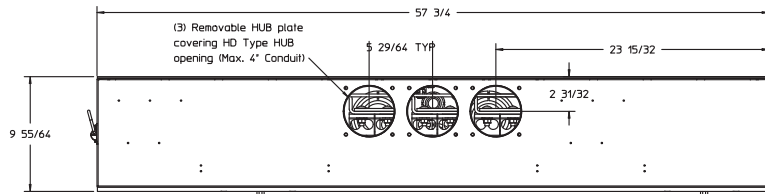
# Meter Centers

## Uni-PAK Metering: Dimensional & Knockout Diagrams

### WPL8612 WPL10612



Top view for  
WPL8612 and WPL10612



Bottom view for  
WPL8612 and WPL10612

