

pushbutton, flat, white, for pushbutton, with laser labeling, symbol number according to, ISO 7000 or IEC 60417

Product brand name	SIRIUS ACT
Product designation	Button
Design of the product	flat
Product type designation	3SU1

Actuator

Outer diameter of the actuating element	23.7 mm
---	---------

Ambient conditions

Environmental category during operation acc. to IEC 60721	3M6, 3S2, 3B2, 3C3, 3K6 (with relative air humidity of 10 ... 95 %)
---	---





Installation/ mounting/ dimensions

Depth	2.2 mm
-------	--------

Accessories

Material of accessory	Plastic
Color of accessory	white

Certificates/ approvals

General Product Approval	Declaration of Conformity	Test Certificates
 CSA  UL  EAC  CE EG-Konf.	Miscellaneous	Type Test Certificates/Test Report

Marine / Shipping



other

[Confirmation](#)

Further information

Information- and Downloadcenter (Catalogs, Brochures,...)

<https://www.siemens.com/ic10>

Industry Mall (Online ordering system)

<https://mall.industry.siemens.com/mall/en/en/Catalog/product?mlfb=3SU1900-0FT60-0AA0-Z Y13>

Cax online generator

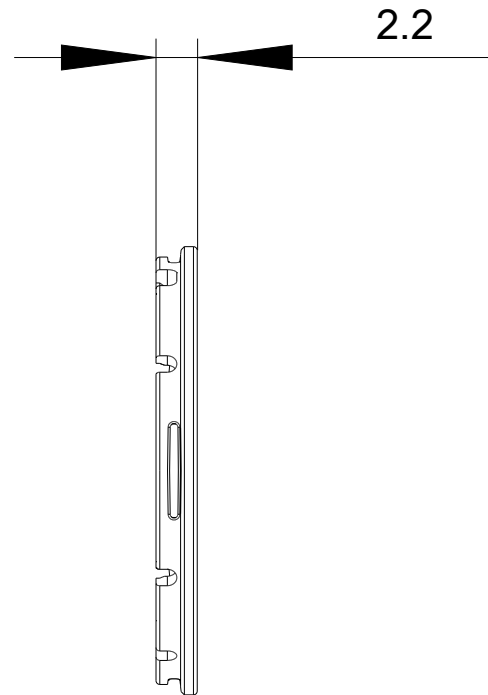
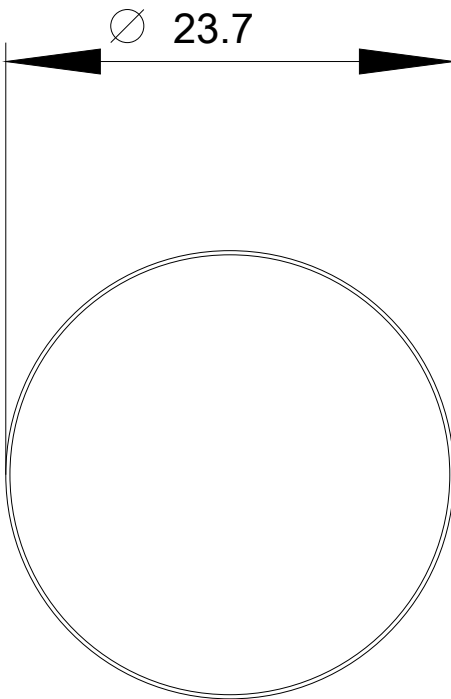
<http://support.automation.siemens.com/WW/CAXorder/default.aspx?lang=en&mlfb=3SU1900-0FT60-0AA0-Z Y13>

Service&Support (Manuals, Certificates, Characteristics, FAQs,...)

<https://support.industry.siemens.com/cs/ww/en/ps/3SU1900-0FT60-0AA0-Z Y13>

Image database (product images, 2D dimension drawings, 3D models, device circuit diagrams, EPLAN macros, ...)

http://www.automation.siemens.com/bilddb/cax_de.aspx?mlfb=3SU1900-0FT60-0AA0-Z Y13&lang=en



last modified:

02/06/2020