

Data sheet for SIMOTICS M-1PH8

Article No. : 1PH8133-1DF02-1CA1

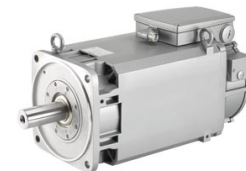


Figure similar

Client order no. :
Order no. :
Offer no. :
Remarks :

Item no. :
Consignment no. :
Project :

Engineering data

		P_N [kW]	M_N [Nm]	I_N [A]	U_N [V]	f_N [Hz]	n_N [rpm]	M_{max} [Nm]	I_{max} [A]	n_{max} [rpm]	M_0 [Nm]	I_0 [A]	η	$\cos \varphi$	I_{μ} [A]
Y	ALM 400V	17.5	96.0	34.0	392	59.8	1,750	240	85.0	8,000	126.0	42	0.913	0.850	13.6
	BLM/SLM 400V	15.0	96.0	34.0	342	51.3	1,500	240	85.0	8,000	126.0	42	0.899	0.850	14.2
	ALM 480V	22.0	96.0	34.0	480	74.8	2,200	240	85.0	8,000	126.0	42	0.930	0.870	13.5
	BLM/SLM 480V	20.0	96.0	34.0	445	68.2	2,000	240	85.0	8,000	126.0	42	0.933	0.850	13.5

Mechanical data

Motor type	Squirrel cage asynchronous motor
Shaft height	132
Cooling	Forced ventilation DE -> NDE
Vibration severity grade	S/A
Shaft and flange accuracy	R
Degree of protection	IP55
Design acc. to Code I	IM B5 (IM V1, IM V3)
Temperature monitoring	Pt1000 temperature sensor in the stator winding
Color	Standard (Anthracite RAL 7016)
Type of the bearing	Standard with fixed bearing
Shaft end	Feather key with full key balancing
Encoder system	Incremental encoder 22 bit with commutation position 11 bit, max. encoder speed = 12000 rpm

External fan

Max. power consumption

3 AC 400 V / 50 Hz ($\pm 10\%$)	0.10 A
3 AC 400 V / 60 Hz ($\pm 10\%$)	0.12 A
3 AC 480 V / 60 Hz ($\pm 10\%$)	0.12 A

¹⁾ at a rated frequency of 4 kHz and a speed range of up to 5000 rpm

Physical constants

Thermal time constant	30 min
Moment of inertia	760 kgcm ²
Weight (approx.)	106 kg

Connection

Type of electrical connection	Terminal box
Position of the connection	NDE top
Power connection	right
Signal connection	DE
Terminal box designation	gk833

Cooling data and sound pressure level

Airflow, min.	0.09 m ³ /s
Sound pressure level LpA(1m) motor + external fan operation 50 HZ rated load, tolerance + 3dB	70 dB ¹⁾
Air discharge	axial
Pressure drop	140 Pa