

AS-Interface module, 4 inputs and 3 outputs, black, Spring-type terminal (Push-in), for input/output, for front plate mounting



Product brand name	SIRIUS ACT
Product designation	AS-Interface module
Product type designation	3SU1
<b>General technical data</b>	
Product function	4 DI / 3 DQ AB
Degree of pollution	3
Type of voltage	
• of the operating voltage	DC
• of the input voltage	DC
Consumed current	
• maximum	150 mA
Protection class IP	IP20
Shock resistance	
• for railway applications acc. to DIN EN 61373	Category 1, Class B
Vibration resistance	
• for railway applications acc. to DIN EN 61373	Category 1, Class B
Reference code acc. to DIN 40719 extended according to IEC 204-2 acc. to IEC 750	A
Reference code acc. to DIN EN 81346-2	K

Reference code acc. to DIN EN 61346-2	K
Design of the slave type	4 DI /3 DO AB
AS interface slave profile	S-7.A.E
ID1 code	0...7
Number of AS-i slaves	1
Protocol is supported ASIsafe (Safety at work) protocol	No
Operating voltage	
• rated value	18 ... 31.6 V
Operating voltage 1	
• at DC rated value	30 V

#### Communication/ Protocol

Protocol is supported	
• AS-Interface protocol	Yes

#### Inputs/ Outputs

Number of digital inputs	4
• safety-related	0
Number of digital outputs	3

#### Connections/ Terminals

Type of electrical connection	Push-in terminal
Type of connectable conductor cross-sections	
• solid without core end processing	1x (0.14 ... 0.5 mm <sup>2</sup> )
• finely stranded without core end processing	1x (0.2 ... 0.5 mm <sup>2</sup> )
• at AWG conductors	1x (26 ... 20)

#### Product Function

Suitability for use	
• safety-related circuits	No





#### Ambient conditions

Ambient temperature	
• during operation	-25 ... +70 °C
• during storage	-40 ... +80 °C
Environmental category during operation acc. to IEC 60721	3M6, 3S2, 3B2, 3C3 (without salt spray), 3K6 (with relative humidity of 10 ... 95%, no condensation in operation permitted)

#### Installation/ mounting/ dimensions

Mounting type	
• of modules and accessories	Front plate mounting
• of AS-i slaves	Floor mounting
Height	57.5 mm
Width	23.8 mm
Depth	53.5 mm

## Certificates/ approvals

General Product Approval	EMC	Declaration of Conformity	Test Certificates
 UL		 RCM	 EG-Konf.

[Miscellaneous](#)

[Type Test Certificates/Test Report](#)

## other

[Confirmation](#)

## Further information

### Information- and Downloadcenter (Catalogs, Brochures,...)

[www.siemens.com/sirius/catalogs](http://www.siemens.com/sirius/catalogs)

### Industry Mall (Online ordering system)

<https://mall.industry.siemens.com/mall/en/en/Catalog/product?mlfb=3SU1400-1EJ10-6AA0>

### Cax online generator

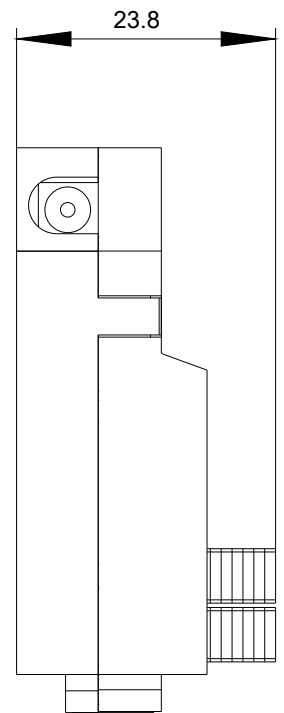
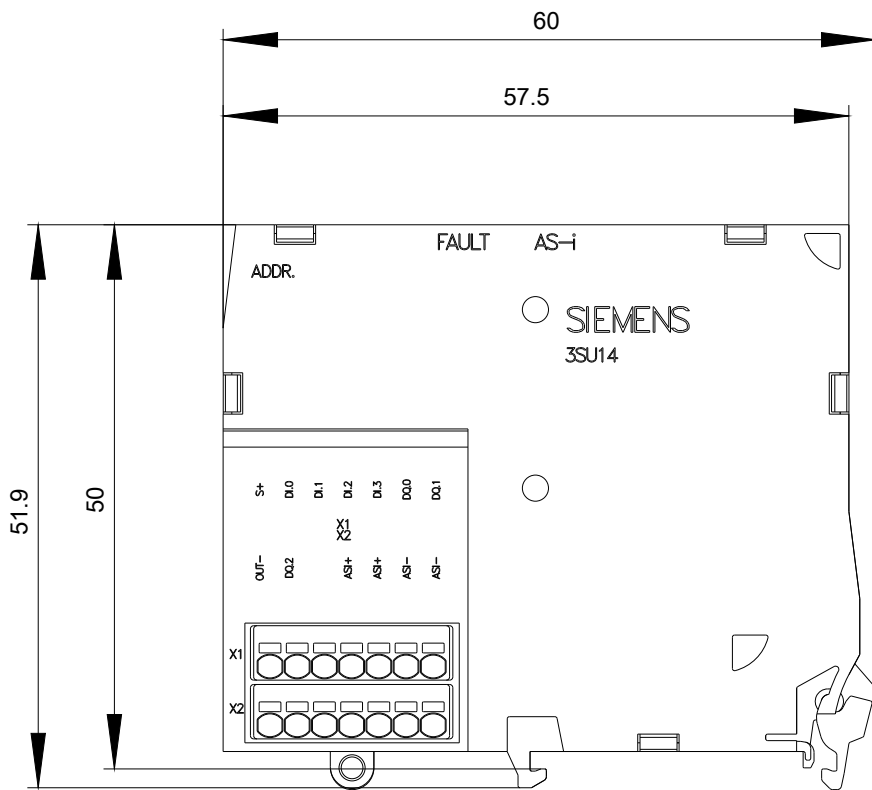
<http://support.automation.siemens.com/WW/CAXorder/default.aspx?lang=en&mlfb=3SU1400-1EJ10-6AA0>

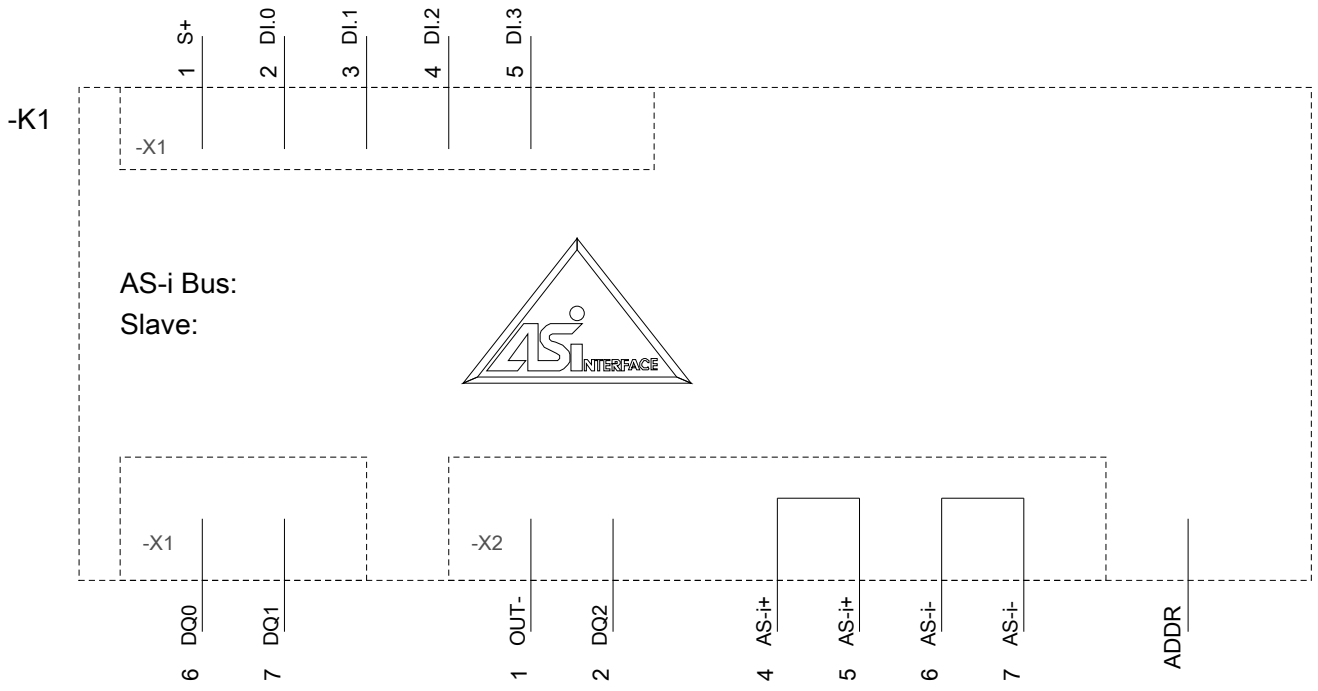
### Service&Support (Manuals, Certificates, Characteristics, FAQs,...)

<https://support.industry.siemens.com/cs/ww/en/ps/3SU1400-1EJ10-6AA0>

### Image database (product images, 2D dimension drawings, 3D models, device circuit diagrams, EPLAN macros, ...)

[http://www.automation.siemens.com/bilddb/cax\\_de.aspx?mlfb=3SU1400-1EJ10-6AA0&lang=en](http://www.automation.siemens.com/bilddb/cax_de.aspx?mlfb=3SU1400-1EJ10-6AA0&lang=en)





last modified:

11/13/2019