

**SIEMENS**



Selection and Application Guide

# Commercial Multi-Metering Switchboards

(Type SMM & MMS)

[www.usa.siemens.com/switchboards](http://www.usa.siemens.com/switchboards)

# Contents

<b>SMM &amp; MMS Overview</b>	
Product Description	
Features	3
Individual Product Line	
Standards and Certifications	
<b>Section Type Guide</b>	
Incoming Sections	4
Auxiliary Sections	5
SMM Metering Sections	6
MMS Metering Sections	7
<b>Dimensional Guide</b>	
Incoming Main: EUSERC	8
Incoming and Auxiliary: EUSERC	9
SMM Metering	10
Incoming Main: Non-EUSERC	11
Incoming and Auxiliary: Non-EUSERC	12
MMS Metering	13
<b>Enclosure Dimensional Data</b>	14
<b>Switchboard Replacement Parts and Modification Kit</b>	15
<b>Utility Metering</b>	16 - 19

# SMM & MMS overview

## Product Description

Siemens commercial multi-metering switchboards provide utility metering for multiple tenants. The sockets and protective devices are cable connected at the factory making the sockets ready for the installation of the meters.

With the modular design of Siemens switchboards all multi-metering sections can be combined with standard main service or distribution sections.

Multi-metering switchboards can be used in many applications, some of the most common are:

- Shopping centers
- Office buildings
- Retail chain stores

## Features

- Up to 6000 ampere main bus rating
- Up to 600 volts AC
- Bus bracing up to 200 KAIC
- Type 1 and Type 3R enclosures
- Standard hot sequence metering with optional cold sequence metering
- 100, 200 or 320<sup>®</sup> ampere meter sockets
- Sockets include lever type manual bypass
- Ring-less type meter cover design
- Type 1 and Type 3R rating
- All other SB1, SB2 & SB3 switchboard features

① 320 ampere sockets are available in MMS switchboards only. Contact your local sales office.

## Individual Product Lines

Type SMM switchboards are specifically designed for the west coast and meet all EUSERC requirements.

Type MMS switchboards are designed for non EUSERC territories and are designed to meet the specific requirements of any local utility.

## Standards and Certifications

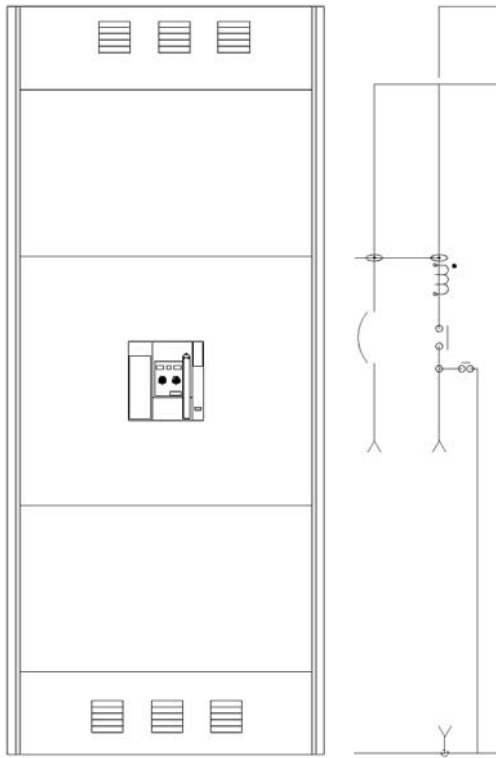
- UL891
- NEMA PB 2
- Seismically qualified
- Other equipment is UL listed as applicable



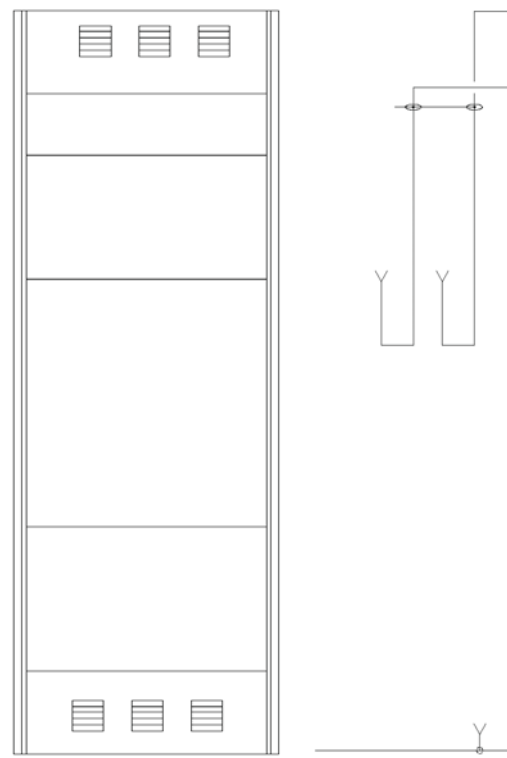
Type 3R EUSERC Switchboard

# Section type guide: Incoming

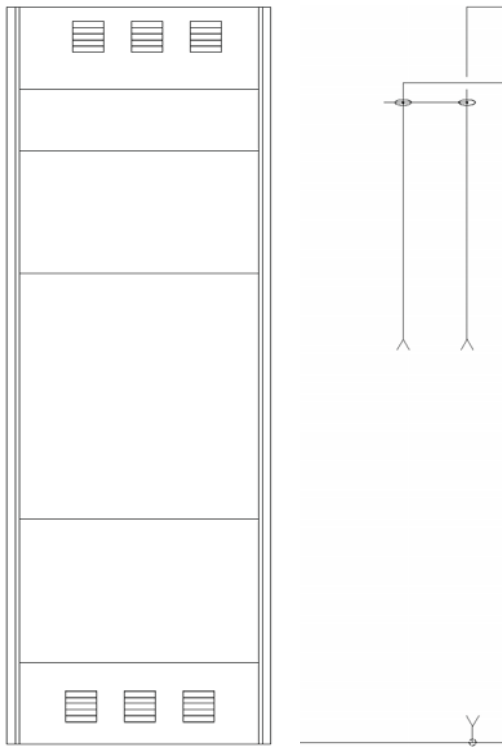
## Incoming sections



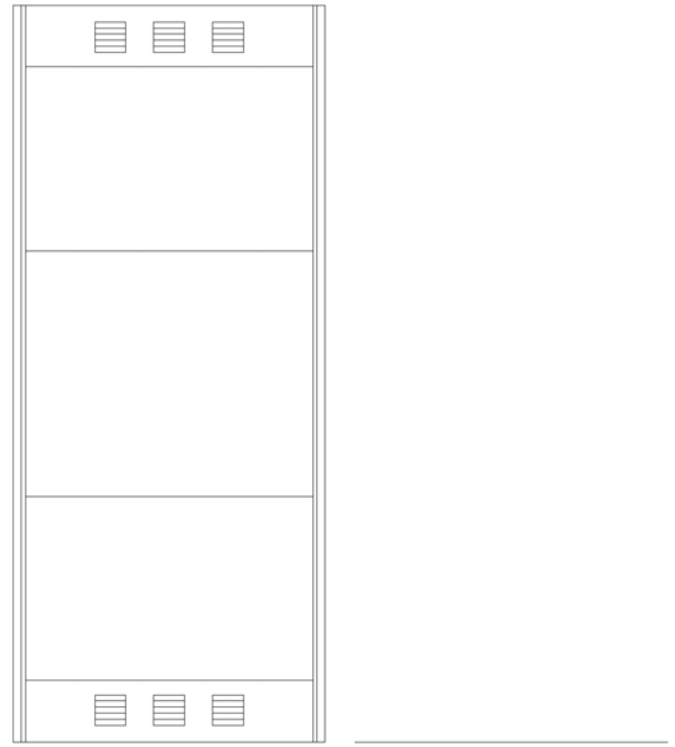
Main



Inverted pull



Bussed-pull

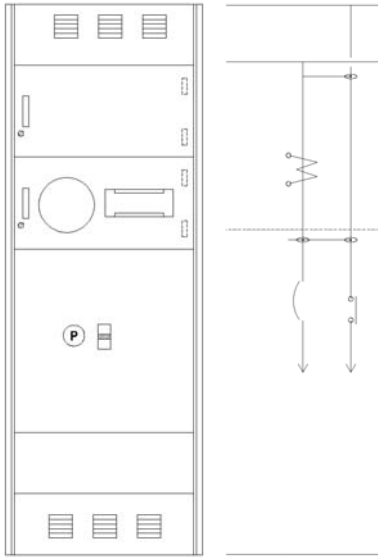


Non-bussed pull

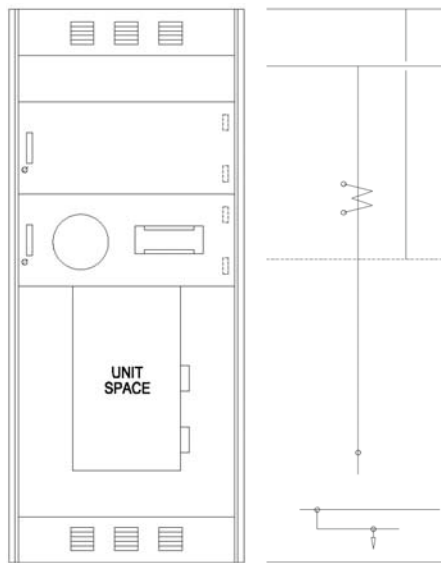
Note: All electrical diagrams are hot sequenced.

# Section type guide: Incoming & auxiliary

## Incoming sections

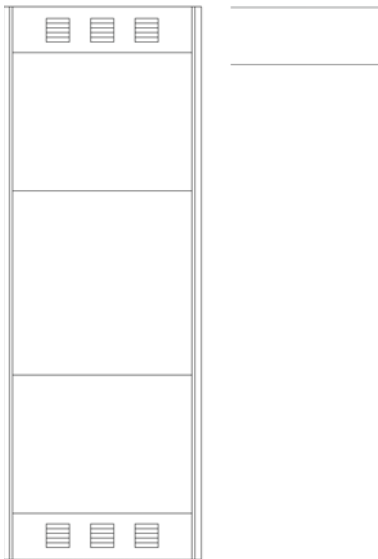


Large Tennant Main



CT Combo

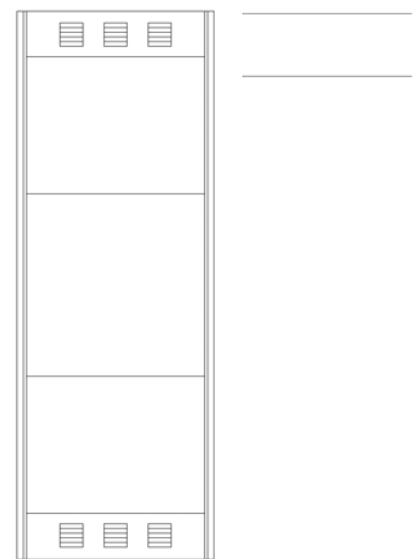
## Auxiliary sections



Pass Thru



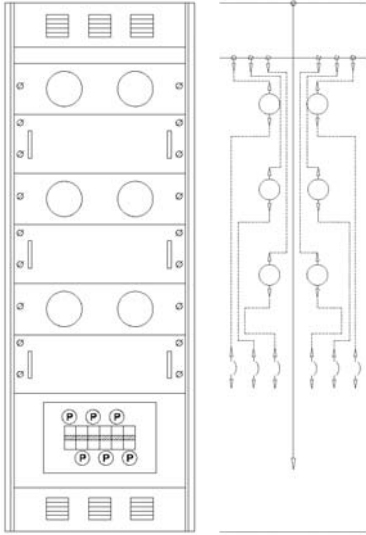
Load wire way



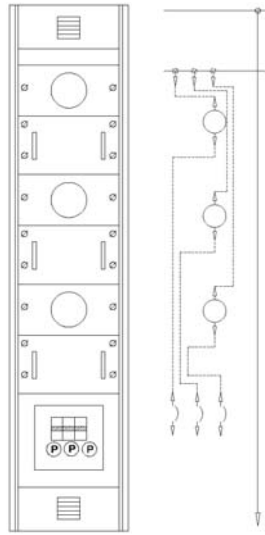
Corner

# Section type guide: SMM metering

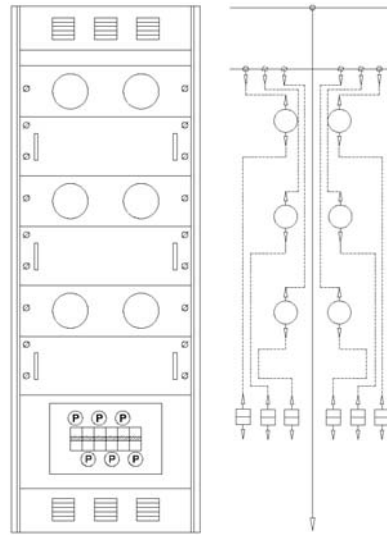
## SMM metering sections



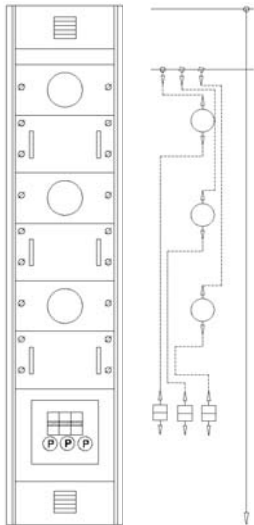
MCCB 6-socket



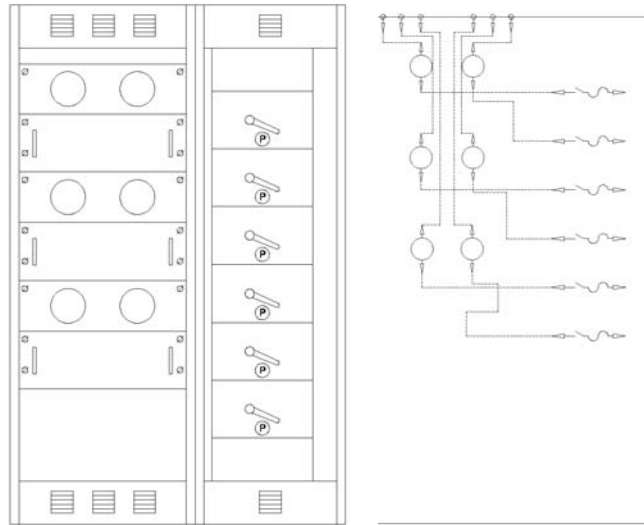
MCCB 3-socket



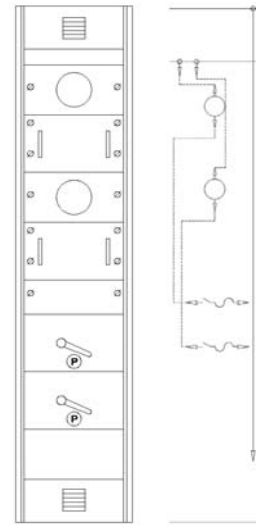
T-Fuse 6-socket



T-Fuse 3-socket



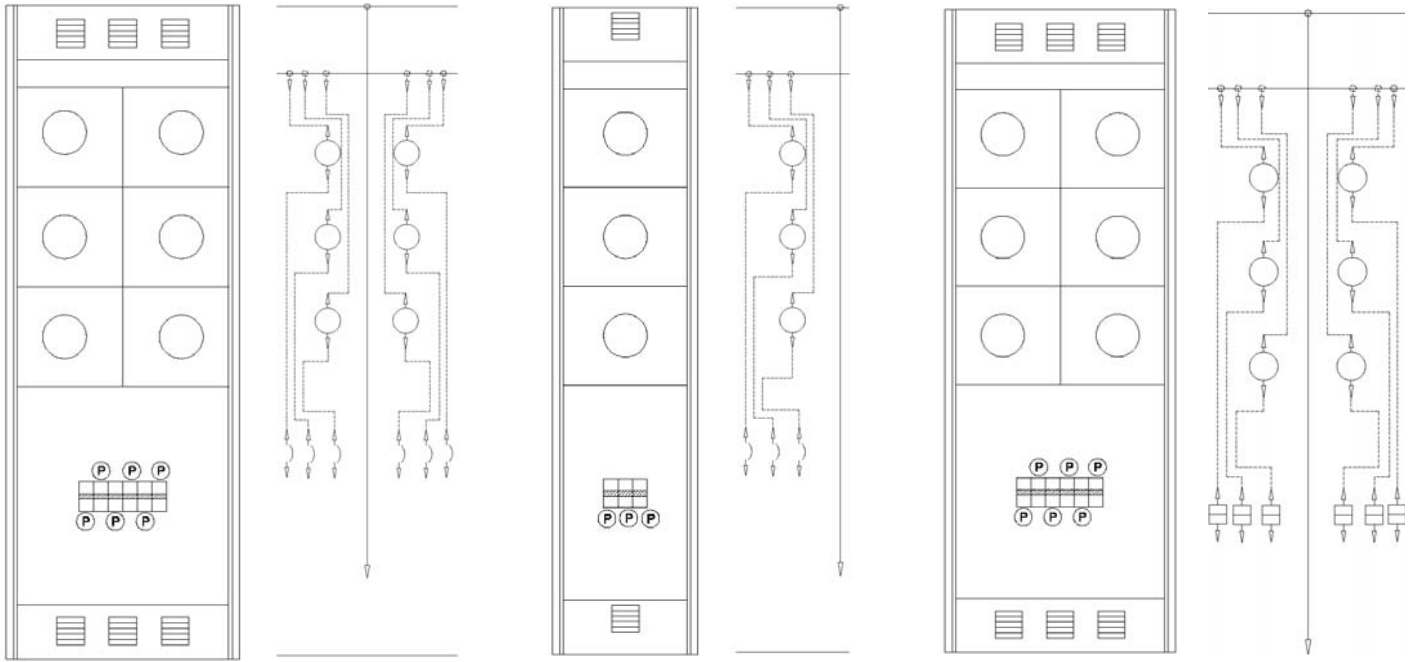
VBS 6-socket



VBS 2-socket

# Section type guide: MMS metering

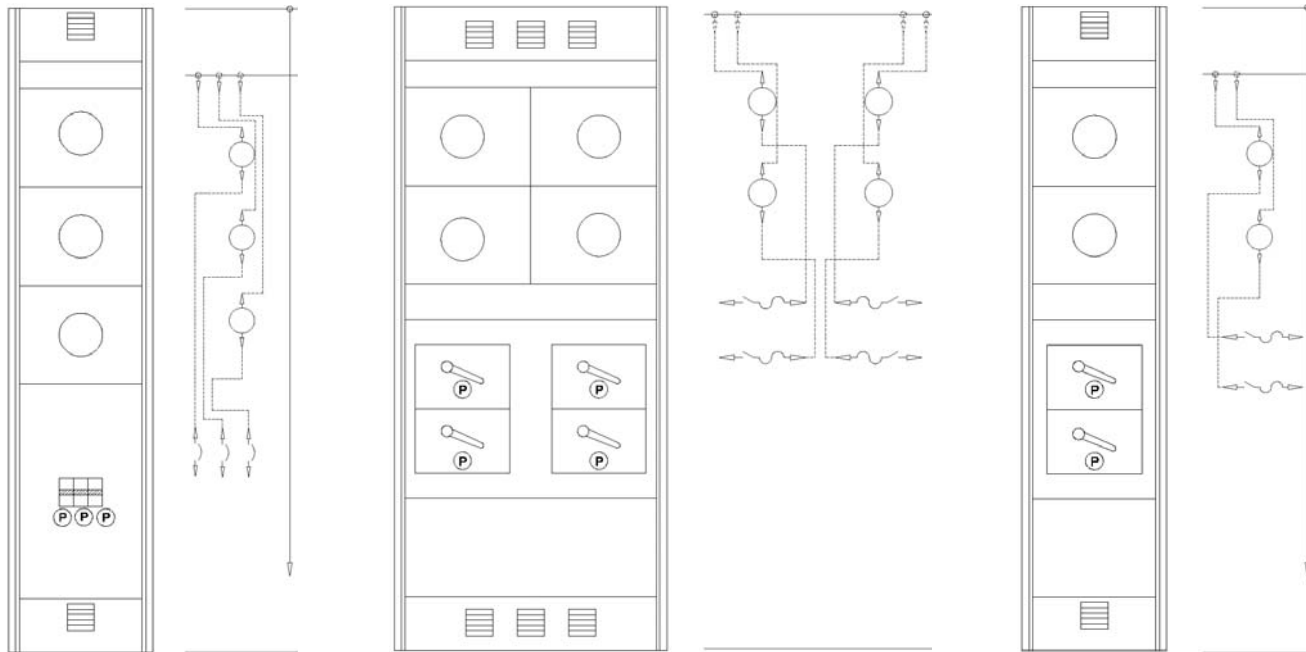
## MMS metering sections



MCCB 6-socket

MCCB 3-socket

T-Fuse 6-socket

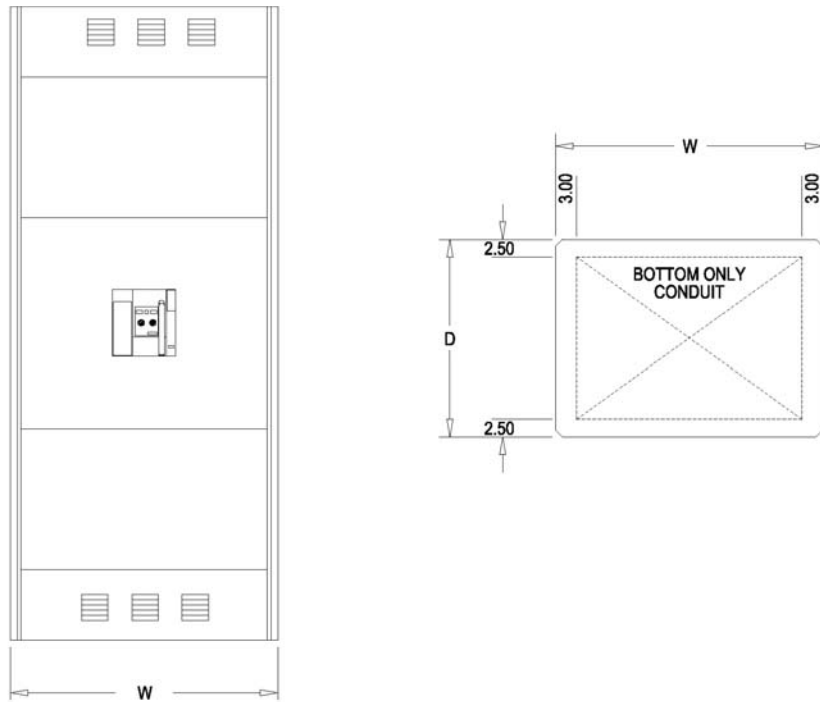


T-Fuse 3-socket

VBS 4-socket

VBS 2-socket

# Dimensional guide: Incoming main EUSERC

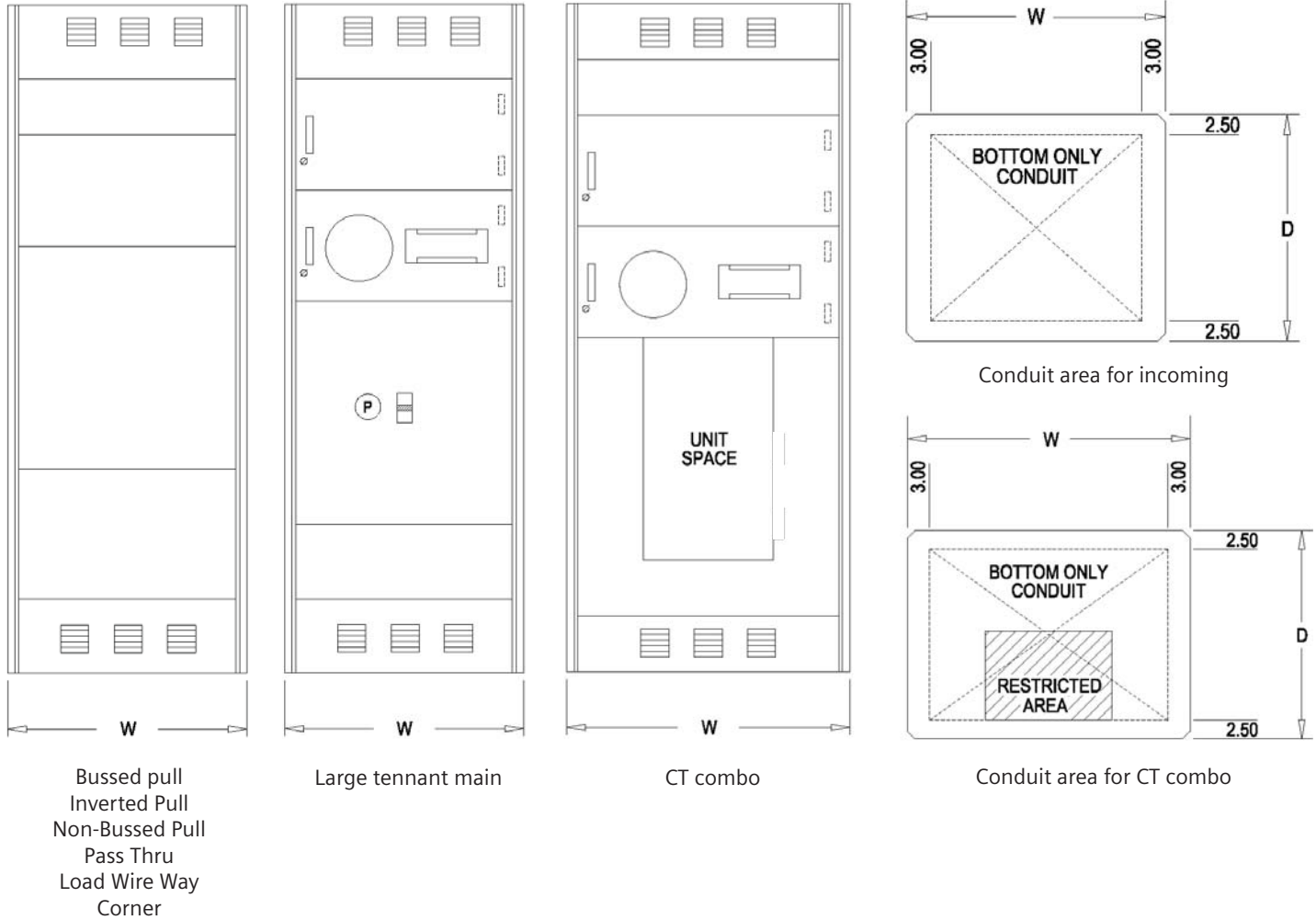


Main

Main Type	Ampacity (A)	Width (in.)		Depth (in.)	
		Min.	Optional	Min.	Optional
BPS	800 - 2000	38	46, 52	28	38, 48, 58
	2500 - 4000	46	52	38	48, 58
	5000 - 6000	52	-		
HCP	400 - 600	38	46, 52	20	28, 38, 48, 58
	800 - 1600				
MCCB	400 - 800	32	38, 46, 52	20	28, 38, 48, 58
	1000 - 1200				
	1600	38	46, 52	28	38, 48, 58
VBS	400 - 600	32	38, 46, 52	20	28, 38, 48, 58
	800 - 1200	38	46, 52	28	38, 48, 58
WL (fixed)	800 - 2000	38	46, 52	28	38, 48, 58
	2500 - 5000			38	48, 58
WL (drawout)	800 - 3000	38	46, 52	38	48, 58
	4000 - 5000	46	52		

**Note:** All switchboards are configured to a standard 90" height. 70" high switchboards are available as a custom option.

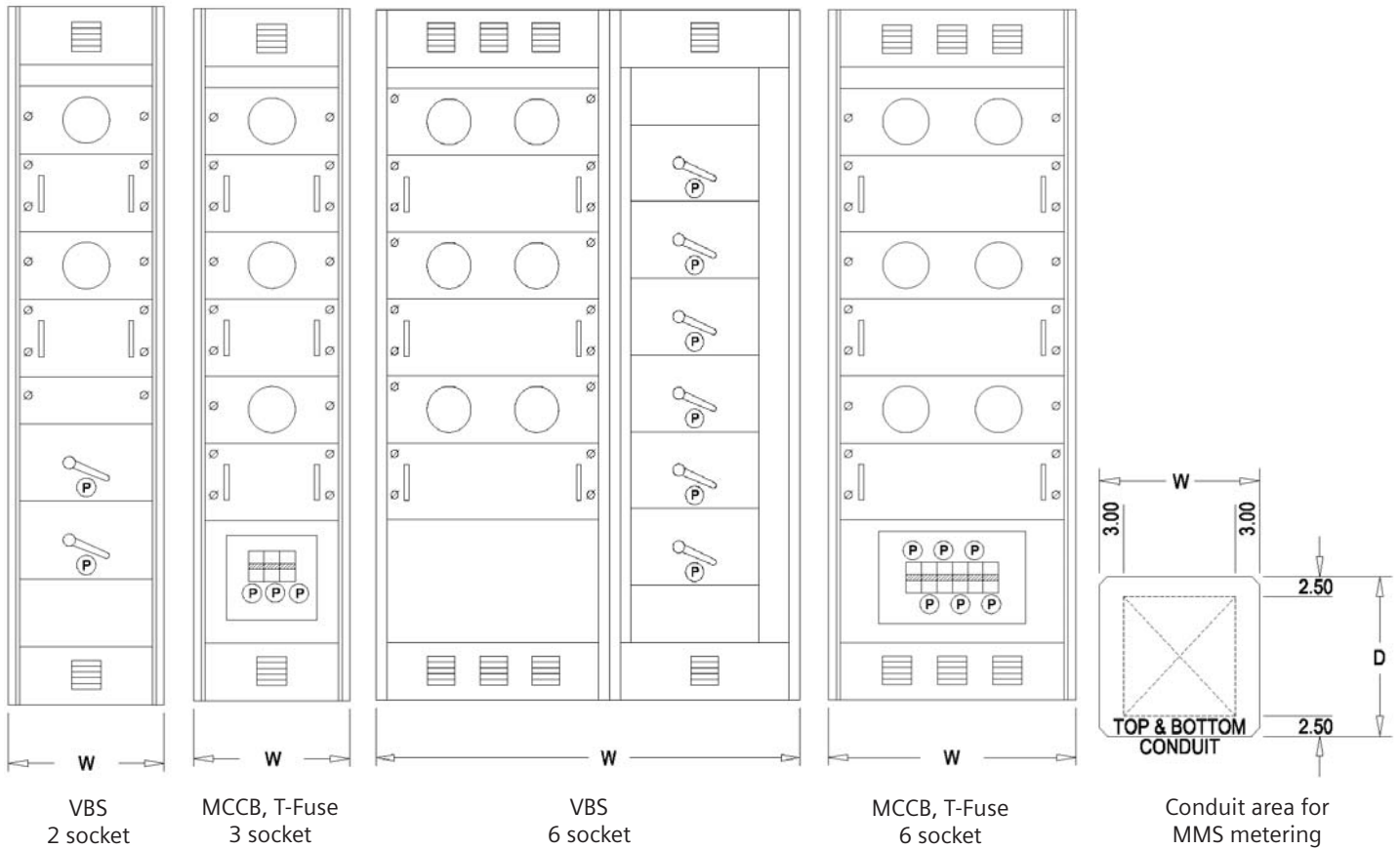
# Dimensional guide: Incoming and auxiliary EUSERC



Module	Ampacity (A)	Width (in.)		Depth (in.)	
		Min.	Optional	Min.	Optional
Bussed-Pull	400 - 1200	20	32, 38, 46, 52	20	28, 38, 48, 58
	1600 - 2000				
	2500 - 3000	32	38, 46, 52	28	38, 48, 58
	4000 - 12000			38	48, 58
Corner	400 - 12000	14	20, 32, 38, 46, 52	20	28, 38, 48, 58
CT Combo	400 - 1000	32	38, 46, 52	20	28, 38, 48, 58
	1200 - 12000	38	46, 52	28	38, 48, 58
Inverted Pull	400 - 1200	20	32, 38, 46, 52	20	28, 38, 48, 58
	1600 - 2000				
	2500 - 3000	32	38, 46, 52	28	38, 48, 58
	4000 - 12000			38	38, 48, 58
Large Tennant Main	400 - 1600	32	38, 46, 52	20	28, 38, 48, 58
	2000 - 12000			28	38, 48, 58
Load Wire Way					
Non-Bussed Pull	400 - 12000	14	20, 32, 38, 46, 52	20	28, 38, 48, 58
Pass Thru					

Note: All switchboards are configured to a standard 90" height. 70" high switchboards are available as a custom option.

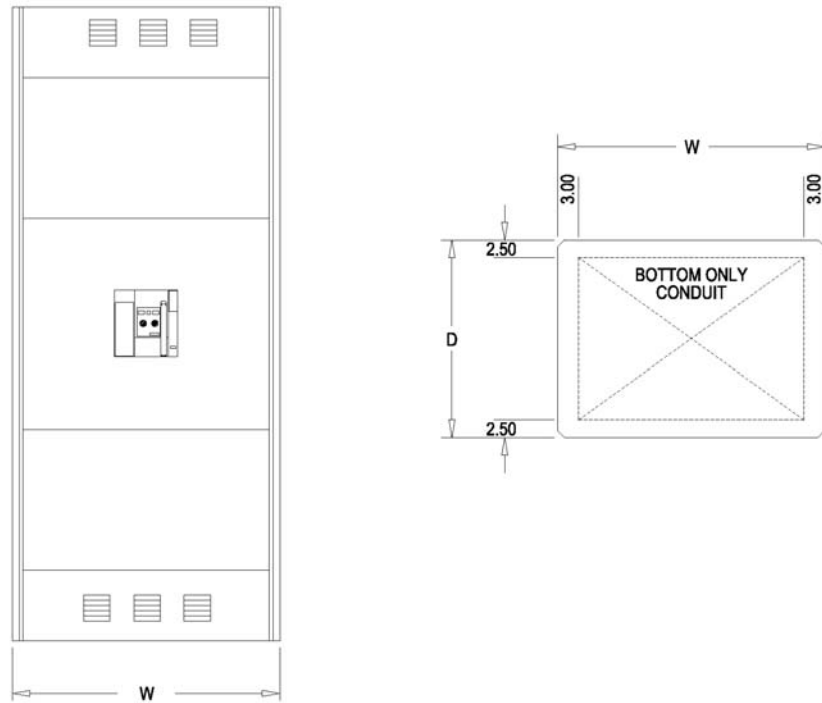
# Dimensional guide: SMM metering



Module	Ampacity	Width (in.)		Depth (in.)	
		Min.	Optional	Min.	Optional
MCCB - 6 socket	400-12000	32	-	20	28, 38, 48, 58
T-Fuse - 6 socket					
VBS - 6 socket		38			
MCCB - 3 socket		20			
T-Fuse - 3 socket					
VBS - 2 socket					

**Note:** All switchboards are configured to a standard 90" height. 70" high switchboards are available as a custom option.

# Dimensional guide: Incoming main non-EUSERC

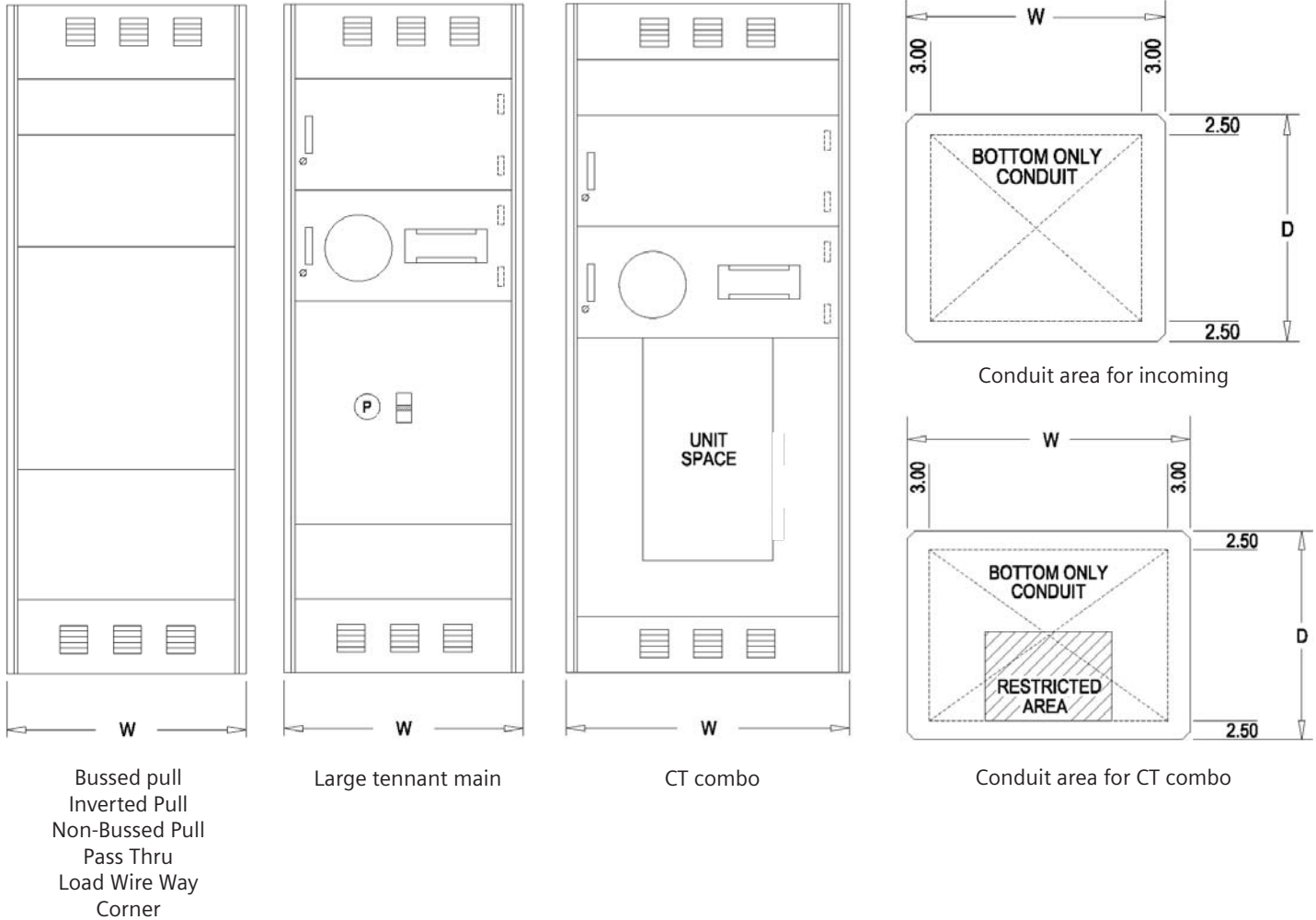


Main

Main Type	Ampacity (A)	Width (in.)		Depth (in.)	
		Min.	Optional	Min.	Optional
BPS	800 - 2000	38	46, 52	28	38, 48, 58
	2500 - 4000	46	52	38	48, 58
	5000 - 6000	52	-		
HCP	400 - 1600	38	46, 52	20	28, 38, 48, 58
MCCB	400 - 1200	32	38, 46, 52	20	28, 38, 48, 58
	1600	38	46, 52	28	38, 48, 58
VBS	400 - 600	32	38, 46, 52	20	28, 38, 48, 58
	800 - 1200	38	46, 52	28	38, 48, 58
WL (fixed)	800 - 2000	38	46, 52	28	38, 48, 58
	2500 - 5000			38	48, 58
WL (drawout)	800 - 3000	38	46, 52	38	48, 58
	4000 - 5000	46	52		

**Note:** All switchboards are configured to a standard 90" height. 70" high switchboards are available as a custom option.

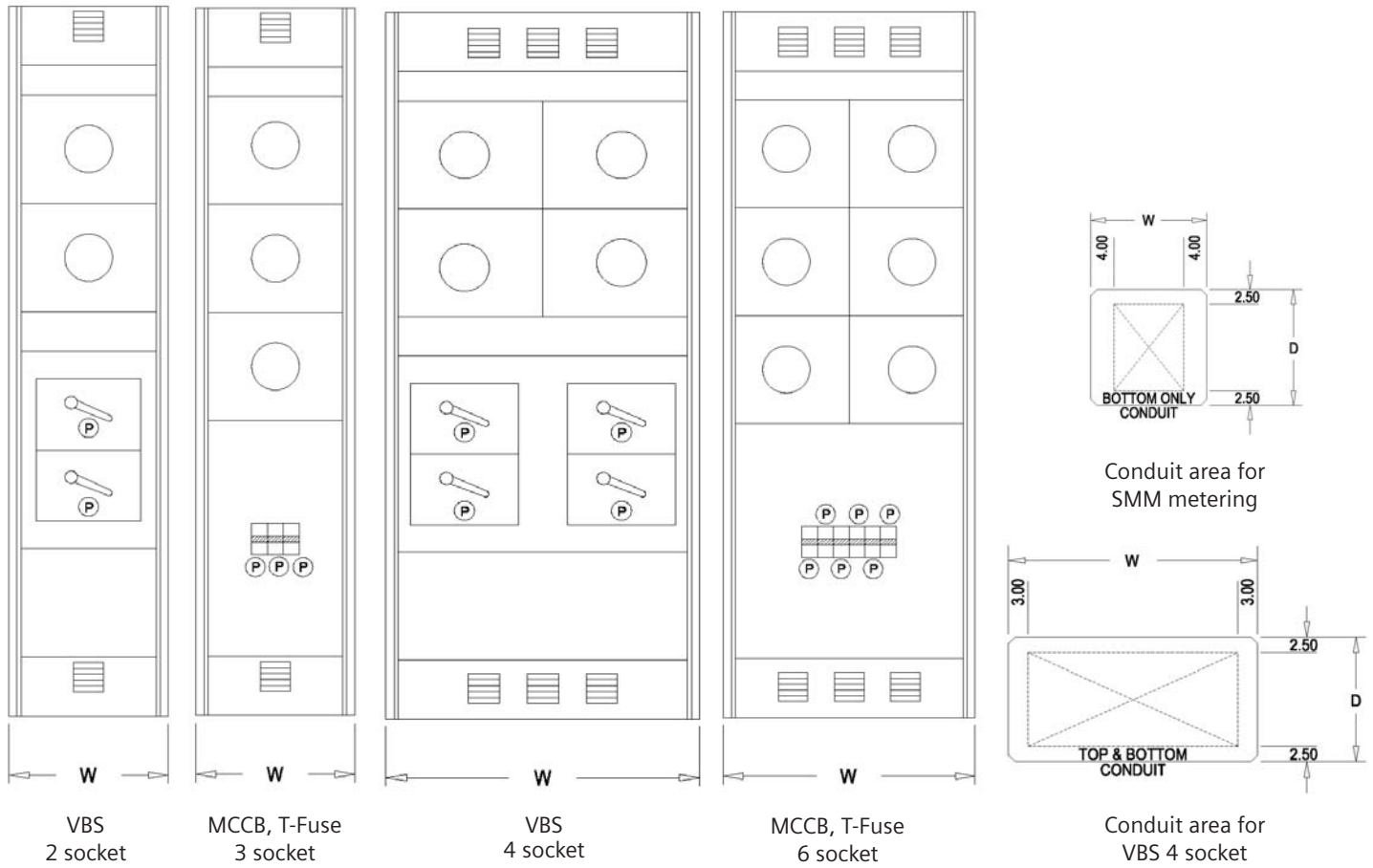
# Dimensional guide: Incoming and auxiliary non-EUSERC



Module	Ampacity	Width (in.)		Depth (in.)	
		Min.	Optional	Min.	Optional
Bussed-Pull	400 - 1200	20	32, 38, 46, 52	20	28, 38, 48, 58
	1600 - 2000				
	2500 - 3000	32	38, 46, 52	28	38, 48, 58
	4000 - 12000			38	48, 58
Corner	400 - 12000	14	20, 32, 38, 46, 52	20	28, 38, 48, 58
CT Combo	400 - 800	38	46, 52	20	28, 38, 48, 58
	1000 - 3000			28	38, 48, 58
	4000 - 12000	38	48, 58		
Inverted Pull	400 - 1200	20	32, 38, 46, 52	20	28, 38, 48, 58
	1600 - 2000				
	2500 - 3000	32	38, 46, 52	28	38, 48, 58
	4000 - 12000			38	48, 58
Large Tennant Main	400 - 12000	38	46, 52	28	38, 48, 58
Load Wire Way	400 - 12000	14	20, 32, 38, 46, 52	20	28, 38, 48, 58
Non-Bussed Pull					
Pass Thru					

**Note:** All switchboards are configured to a standard 90" height. 70" high switchboards are available as a custom option.

# Dimensional guide: MMS metering

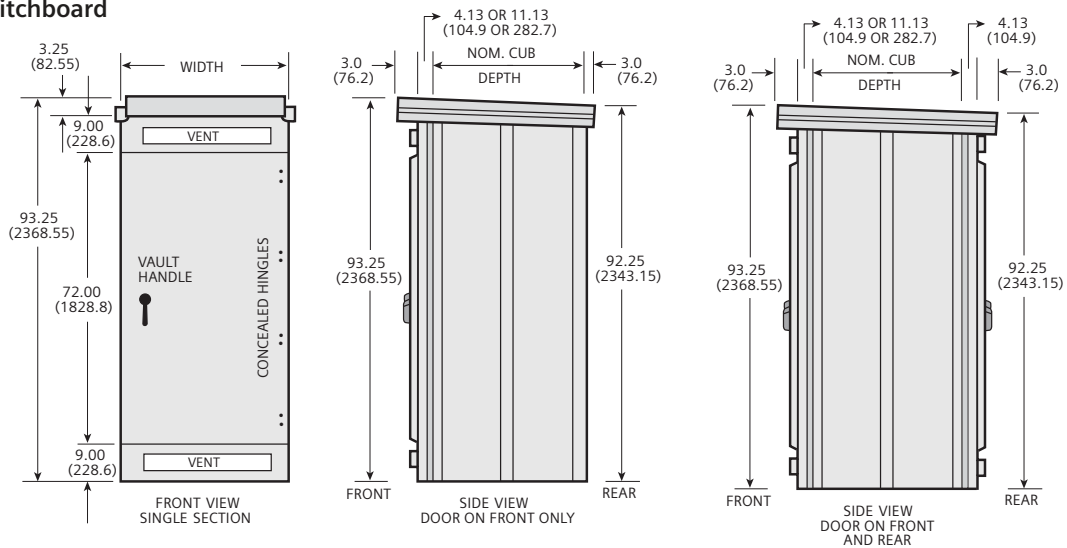


Module	Ampacity	Width (in.)		Depth (in.)	
		Min.	Optional	Min.	Optional
MCCB - 6 socket	400-12000	32	-	20	28, 38, 48, 58
T-Fuse - 6 socket					
VBS - 4 socket		38			
MCCB - 3 socket		20			
T-Fuse - 3 socket					
VBS - 2 socket					

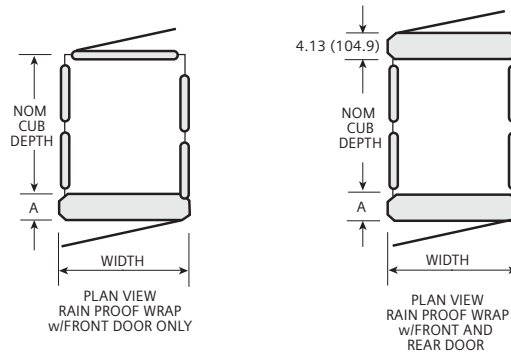
**Note:** All switchboards are configured to a standard 90" height. 70" high switchboards are available as a custom option.

# Enclosure dimensional data

## East Coast Switchboard Sloped Roof



## Rainproof Type 3R Enclosure UL Listed in Accordance with UL891

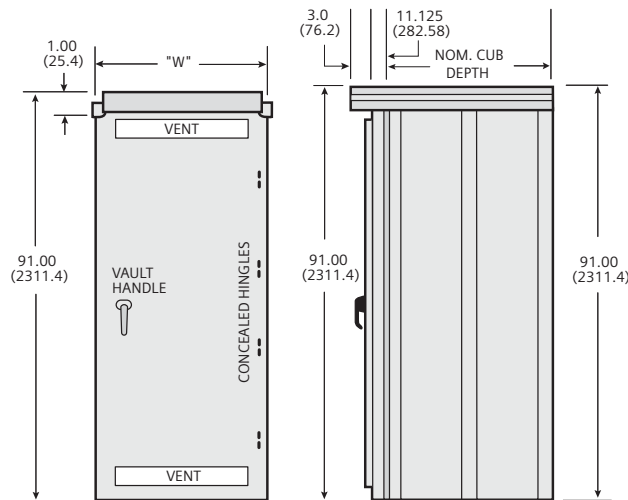


A
4.125" (104.78)①
11.125" (282.58)②

Nominal cubicle depth
20" (508)
28" (711.2)
38" (965.2)
48" (1219.2)
58" (1473.2)

Width
18" (457.2)
20" (508)
26" (660.4)
32" (812.8)
38" (965.2)
46" (1168.4)
52" (1320.8)

## West Coast Switchboard Flat Roof



Dimensions shown in inches and millimeters ( ).

- ① 4.125 inches (104.28 mm) is standard.
- ② 11.125 inches (282.58 mm) will be furnished with socket type wattour meter and other deep devices. Front access only West Coast applications.

# Switchboard replacement parts and modification kits

## Connecting kits

Disconnect device	Catalog number
NGG	SMMNGMK
EG	SMMHEMK
BQ	SMMBQMK
QJ	SMMQJMK
ED	SMMEDMK
FD	SMMFDMK
CED	SMMCCEMK
T-Fuse Pullout	SMMTFMK

## Connection strap kits - Circuit breaker

Max amp rating	Breaker family	Breaker type	Catalog number	Unit height (inches)	Mounting
100	General	BL, BQD	SBLBD	3.75	Twin
125	General	EB	SEBD	3.75	Twin
	General	NGB	SNBD	3.75	Twin
	General	ED	6E62	3.75	Twin
	General	CED	6CLE2	3.75	Twin
150	VL	DG	SDGD	5	Twin
225	General	QJ	6QJ2	5	Twin
250	VL	FG	SFJD	5	Twin
	Sentron	FD	6F62	5	Twin
	Sentron	CFD	6CLF1	5	Single
400	VL	JD	SJGDD	6.25	Twin
	VL	JD	SJG1D	6.25	Single
	Sentron	JD	6JJ61	8.75	Single
	Sentron	JD	6JJ62	8.75	Twin
	Sentron	CJD	6CLJ1	8.75	Single
	Sentron	SJD	6SJL1	8.75	Single
	Sentron	SCJD	6SCJ1	8.75	Single
	600	VL	LG	SLGD	6.25
Sentron		LD	6LL61	8.75	Single
Sentron		CLD	6CLL1	8.75	Single
Sentron		SLD	6SLL1	8.75	Single
Sentron		SCLD	6SCL1	8.75	Single
800	VL	MG	MG1D	8.75	Single
	Sentron	LMD	SLM1D	8.75	Single
	Sentron	MD	SMND	10	Single
	Sentron	SMD	SSMND	10	Single
1200	VL	NG	NG1D	10	Single
	Sentron	ND	SMND	10	Single
	Sentron	SND	SSMND	10	Single

## Replacement meter socket kits

Type	Catalog number
1-Phase	MSK2001
3-Phase	MSK2003

## Blank plates - CB & fusible switch

Unit height (inches)	Catalog number
1.25	6FPB01
2.5	6FPB02
3.75	6FPB03
5	6FPB05
10	6FPB10

## Filler plates

Breaker frame	Filler plate catalog number	Notes
BL, BQD, ED	QF3	Per pole
EB	EBF1	Per pole

## Connection strap kits - Vacu-break & HCP

Switch type	Ampere rating	Unit height (inches)	Catalog number
Vacu-break	30-30	5, 7.5	VB657
	30-60	5, 7.5	
	60-60	5, 7.5	
	60-100	7.5	
	100-100	7.5	
	100	7.5	VB671
	200	7.5, 10	
	200-200	10	
HCP	400-600	15	VB6150
	800-1200	16.25	F6162D

# Utility metering

Electric Utility Company	ED&C utility code	480V		280V	
		Hot	Cold	Hot	Cold
Alameda Bureau of Electricity	EUSERC	X		X	
Anaheim Public Utilities Department	EUSERC	X		X	
Anderson Municipal, IN	Non-EUSERC	X		X	
Anoka Electric Co., MN	Non-EUSERC	X		X	
Appalachian Power Co., VA (NEMA)	Non-EUSERC	X		X	
Arizona Public Service Company	EUSERC	X		X	
Atlantic Electric, NJ	Non-EUSERC	X		X	
Austin Electric Dept., TX	Non-EUSERC	X		X	
Azusa Light and Water Department	EUSERC	X		X	
Baltimore Gas & Electric, MD	Non-EUSERC	X		X	
Bangor Hydro-Electric Co., ME	Non-EUSERC		X	X	
Banning Electric Department	EUSERC	X		X	
Belmont Municipal, MA	Non-EUSERC		X		X
Benton County Public Utility District No. 1	EUSERC	X		X	
Benton Rural Electric Association	EUSERC	X		X	
Blackstone Valley Elect. Co., RI	Non-EUSERC	X		X	
Boston Edison Co., MA	Non-EUSERC		X		X
Braintree Elect., Light Co., MA	Non-EUSERC		X		X
Burbank Public Service Department	EUSERC	X		X	
Burlington Elect., Lighting Dept., VT	Non-EUSERC	X		X	
Callum County Public Utility District	Non-EUSERC	X		X	
Cambridge Electric Co., MA	Non-EUSERC		X		X
Central Colorado Pwr./Centel Corp., CO	Non-EUSERC	X		X	
Central Hudson Gas & Electric, NY	Non-EUSERC	X		X	
Central Illinois Light Co., IL	Non-EUSERC	X		X	
Central Illinois Public Service, IL	Non-EUSERC	X		X	
Central Maine Power Co., ME	Non-EUSERC	X		X	
Central Vermont Public Service Corp., VT	Non-EUSERC		X		X
Chelan County Public Utility District	EUSERC	X		X	
Chicopee Light & Power, MA	Non-EUSERC		X		X
Cincinnati Gas & Electric, OH	Non-EUSERC	X		X	
Citizens Utility Company Kauai Electric Division	EUSERC	X		X	
Clark County Public Utility District	EUSERC	X		X	
Cleveland Electric Illuminating Co., OH	Non-EUSERC		X		X
Colorado Springs	Non-EUSERC	X		X	
Colorado Springs Dept. of Utilities, CO	EUSERC	X		X	

Electric Utility Company	ED&C utility code	480V		280V	
		Hot	Cold	Hot	Cold
Columbus Div. of Electric, OH	Non-EUSERC		X		X
Columbus Southern Power, OH	Non-EUSERC		X		X
Commonwealth Edison Co., IL	Non-EUSERC	X			X
Commonwealth Electric, MA	Non-EUSERC	X			X
Concord Electric Co., NH	Non-EUSERC		X		X
Connecticut Light & Power Co., CT	Non-EUSERC		X		X
Consolidated Edison Co., NY (298-377)	Non-EUSERC	X		X	
Consumers Power of Michigan, MI	Non-EUSERC		X		X
Coos-Curry Electric Cooperative	EUSERC	X		X	
CP National Corporation	EUSERC	X		X	
Cornbelt Electric Co-Op., IL	Non-EUSERC	X		X	
Danvers Elect., Div., MA	Non-EUSERC		X		X
Dayton Power & Light Co., OH	Non-EUSERC	X		X	
Delaware Power & Light Co., DE	Non-EUSERC	X		X	
Delmarva Power & Light, DE	Non-EUSERC	X		X	
Des Moines District	Non-EUSERC	X		X	
Detroit Edison Co., MI	Non-EUSERC	X		X	
Dover, DE	Non-EUSERC	X		X	
Duquesne Light Co., PA	Non-EUSERC	X		X	
East Central Electric, MN	Non-EUSERC	X		X	
Eastern Edison Co., MA	Non-EUSERC	X		X	
Eugene Water and Electric Board	Non-EUSERC	X		X	
Exeter & Hampton Electric Co., NH	Non-EUSERC	X		X	
Florida Power and Light (NEMA)	Non-EUSERC	X		X	
Franklin County Public Utility District	EUSERC	X		X	
Freeport Electric Dept., NY	Non-EUSERC	X		X	
Georgia Power Co., GA (NEMA)	Non-EUSERC	X		X	
Glendale Public Service Department	EUSERC	X		X	
Granite State, NH (NEMA)	Non-EUSERC		X	X	
Grant County Public Utilities District	EUSERC	X		X	
Gray's Harbor County District No. 1	EUSERC	X		X	
Green Mountain Power Co., VT (NEMA)	Non-EUSERC		X	X	
Greenport Electric Dept., NY	Non-EUSERC	X		X	
Gulf State Utilities Co., TX	Non-EUSERC	X		X	
Hampton Power and Light (NEMA)	Non-EUSERC		X	X	
Hancock Co., Rural Electric Corp., IA	Non-EUSERC	X		X	
Hawaii Electric Company	EUSERC	X		X	
Hawaii Electric Light Company	EUSERC	X		X	
Heraldsburg Electric	EUSERC	X		X	

# Utility metering

Electric Utility Company	ED&C utility code	480V		280V	
		Hot	Cold	Hot	Cold
Idaho Power	EUSERC	X		X	
Idaho Power Company	EUSERC	X		X	
Illinois Power Co., IL	Non-EUSERC	X		X	
Imperial Irrigation District	EUSERC	X		X	
Indiana & Michigan Electric Co., IN	Non-EUSERC	X		X	
Indianapolis Power & Light, IN	Non-EUSERC	X		X	
Interstate Power Co., IA	Non-EUSERC		X		X
Iowa Illinois Gas & Electric, IA	Non-EUSERC		X		X
Iowa Public Service, IA	Non-EUSERC		X		X
Iowa Southern Utilities Co., IA	Non-EUSERC		X		X
Jacksonville Electric Authority, FL (NEMA)	Non-EUSERC	X		X	
Jersey Central Power & Light, NJ	Non-EUSERC		X		X
Kansas City Power & Light Co., MO	Non-EUSERC	X		X	
Kansas Gas & Electric Co., KS	Non-EUSERC	X		X	
Kansas Power & Light, KS (NEMA)	Non-EUSERC	X		X	
Kentucky Power, KY (NEMA)	Non-EUSERC	X		X	
Kentucky Utilities, KY (NEMA)	Non-EUSERC	X		X	
Klickitat Company Public Utility District	EUSERC	X		X	
Lake Superior District Power Co., MN	Non-EUSERC	X		X	
Lassen Municipal Utility District	EUSERC	X		X	
Laverne Municipal Electric Plant, OK	Non-EUSERC	X		X	
Lincoln Electric System, NE	Non-EUSERC	X		X	
Lodi	EUSERC	X		X	
Lompoc	EUSERC	X		X	
Long Island Lighting Co., NY	Non-EUSERC	X		X	
Los Angeles Department of Water and Power	EUSERC	X		X	
Louisville Gas & Electric Co., KY	Non-EUSERC	X		X	
Lubec Water & Electric District, ME	Non-EUSERC		X		X
Madison Gas & Electric Co., WI	Non-EUSERC	X		X	
Maine Public Service Co., ME	Non-EUSERC		X		X
Mason County Public Utility District	EUSERC	X		X	
Massachusetts Electric Co., MA (NEMA)	Non-EUSERC	X	X	X	X
Maui Electric Company	EUSERC	X		X	
McMinnville Water and Light	EUSERC	X		X	
Mesa Electric	EUSERC	X		X	
Metropolitan Edison Co., PA	Non-EUSERC	X		X	
MidAmerica Energy	Non-EUSERC	X		X	
Midwest Power Co., IA	Non-EUSERC	X		X	
Minnesota Power & Light Co., MN	Non-EUSERC	X		X	

Electric Utility Company	ED&C utility code	480V		280V	
		Hot	Cold	Hot	Cold
Mississippi Power & Light, MS	Non-EUSERC	X		X	
Modesto Irrigation District	EUSERC	X		X	
Monongahela Power Co., WV	Non-EUSERC	X		X	
Montana Dakota Utilities, MT/ND/SD	Non-EUSERC	X		X	
Montana Power and Light	EUSERC	X		X	
Montana Power Company	EUSERC	X		X	
Muscatine Power & Water, IA	Non-EUSERC	X		X	
Narragansett Electrical Co., RI	Non-EUSERC	X		X	
Navapacheelectric Cooperative Incorporated	EUSERC	X		X	
NEMA	Non-EUSERC	X		X	
Nevada Electric	Non-EUSERC	X		X	
Nevada Power Company Incorporated	EUSERC	X		X	
New England Power	Non-EUSERC	X		X	
New Orleans Public Service, LA	Non-EUSERC	X		X	
Newport Electric Corp., RI	Non-EUSERC		X	X	
New York State Electric & Gas Corp., NY	Non-EUSERC		X	X	
Niagara Mohawk Corp., NY	Non-EUSERC		X		X
Northern Indiana Public Service, IN	Non-EUSERC	X		X	
Northern States Power Co., MN/WI/ND/SD	Non-EUSERC	X		X	
NorthEast Utility	Non-EUSERC		X		X
Northwestern Public Service, SD	Non-EUSERC	X		X	
Norwich Dept. of Public Utilities, CT	Non-EUSERC		X		X
Norwood Municipal Light Co., MA	Non-EUSERC		X		X
Ohio Edison Co., OH	Non-EUSERC	X		X	
Ohio Power Co., OH	Non-EUSERC	X		X	
Omaha Public Power District, NE	Non-EUSERC	X		X	
Orange & Rockland Utilities, NY	Non-EUSERC	X		X	
Otter Tail Power Co., MN	Non-EUSERC	X		X	
Pacific Gas and Electric	EUSERC	X		X	
Pacific Power and Light Company	EUSERC	X		X	
Palo Alto Water and Power Department	EUSERC	X		X	
Parker Municipal Light Dept., SD	Non-EUSERC	X		X	
Pasadena Water and Power Department	EUSERC	X		X	
Penn Electric	Non-EUSERC	X		X	
Peninsular Light Company	EUSERC	X		X	
Pennsylvania Electric Co., PA	Non-EUSERC	X		X	
Pennsylvania Power Co., PA	Non-EUSERC	X		X	
Pennsylvania Power & Light Co., PA	Non-EUSERC	X		X	
Philadelphia Electric Co., PA	Non-EUSERC	X		X	

# Utility metering

Electric Utility Company	ED&C utility code	480V		280V	
		Hot	Cold	Hot	Cold
Plumas-Sierra Rural Electric Company	EUSERC	X		X	
Port Angles City Light	EUSERC	X		X	
Portland General Electric	EUSERC	X		X	
Potomac Edison Co., MD	Non-EUSERC	X		X	
Potomac Electric Power Co., DC	Non-EUSERC	X		X	
Public Service Electric & Gas Co., NJ	Non-EUSERC	X		X	
Public Service of Colorado, CO	Non-EUSERC	X		X	
Public Service of Indiana, IN	Non-EUSERC	X		X	
Public Service of New Hampshire, NH	Non-EUSERC	X		X	
Puget Sound Power and Light	EUSERC	X		X	
Redding Electric Utility	EUSERC	X		X	
Richland	EUSERC	X		X	
Riverside Public Utility	EUSERC	X		X	
Rochester Gas & Electric Co., NY	Non-EUSERC	X		X	
Rockland Electric	Non-EUSERC	X		X	
Rockville Centre Electric Dept., NY	Non-EUSERC	X		X	
Roseville Electric Department	EUSERC	X		X	
Sacramento Municipal Utility District	EUSERC	X		X	
Salem Electric	EUSERC	X		X	
Salt River Project	EUSERC	X		X	
San Diego Gas and Electric	EUSERC	X		X	
Santa Clara Electric Department	EUSERC	X		X	
Seattle Washington	EUSERC	X		X	
Sierra Pacific Power Company	EUSERC	X		X	
Snohomish County Public Utility District No. 1	EUSERC	X		X	
Southern California Edison Company	EUSERC	X		X	
Southern California Water Company	EUSERC	X		X	
South Central Elec. Association, MN	Non-EUSERC	X		X	
South Hadley Electric Light Dept., MA	Non-EUSERC		X		X
South Norwalk Electric, CT	Non-EUSERC		X		X
Southern Indiana Gas & Electric, IN	Non-EUSERC		X		X
Southern Maryland Co-Op, MD	Non-EUSERC	X		X	
SpringField Utility Board	EUSERC	X		X	
St. Louis Municipal Electric, MI	Non-EUSERC	X		X	
Sulpher Springs Valley Electric Corporation	EUSERC	X		X	
Superior Water Light & Power, MN	Non-EUSERC	X		X	

Electric Utility Company	ED&C utility code	480V		280V	
		Hot	Cold	Hot	Cold
Tacoma	EUSERC	X		X	
Tallahassee Electric (NEMA)	Non-EUSERC	X		X	
Trico Electric Cooperative	EUSERC	X		X	
Truckee Donner Public Utility District	EUSERC	X		X	
Tucson Electric Power Company	EUSERC	X		X	
Turlock Irrigation District	EUSERC	X		X	
Toledo Edison, OH	Non-EUSERC		X		X
Ukia	EUSERC	X		X	
Union Electric of St. Louis, MO	Non-EUSERC	X		X	
Union Light Heat & Power Co., KY	Non-EUSERC	X		X	
United Illuminating Co., CT	Non-EUSERC		X		X
Utah Power and Light	EUSERC	X		X	
Vermont Public Service, VT	Non-EUSERC	X		X	
Vernon Water & Electric	EUSERC	X		X	
Village of Hamilton, NY	Non-EUSERC		X		X
Vineland, NJ	Non-EUSERC		X		X
Virginia Electric Power Co., VA	Non-EUSERC	X		X	
Wakefield Municipal, MA	Non-EUSERC		X		X
Washing Water and Power	EUSERC	X		X	
Watertown Municipal, NY	Non-EUSERC		X		X
Watertown Municipal Utilities, SD	Non-EUSERC	X		X	
Wellesley Dept. of Public Works, MA	Non-EUSERC		X		X
WestField Gas and Electric	Non-EUSERC		X		X
West Penn Power Co., PA	Non-EUSERC	X		X	
Western Area Power Administration	EUSERC	X		X	
Western Gas and Electric	Non-EUSERC		X		X
Western Massachusetts Electric Co., MA	Non-EUSERC		X		X
Westerville Electric Co., OH	Non-EUSERC	X		X	
Wheatland Electric Co-Op., KS	Non-EUSERC	X		X	
Wisconsin Electric Power Co., WI	Non-EUSERC	X		X	
Wisconsin Power & Light Co., WI	Non-EUSERC	X		X	
Wisconsin Public Service, WI	Non-EUSERC	X		X	
Dover, DE	Non-EUSERC	X		X	
Duquesne Light Co., PA	Non-EUSERC	X		X	
East Central Electric, MN	Non-EUSERC	X		X	

# Notes

Siemens Industry, Inc.  
5400 Triangle Parkway  
Norcross, GA 30092

1-800-241-4453  
info.us@siemens.com

[www.usa.siemens.com/switchboards](http://www.usa.siemens.com/switchboards)

Subject to change without prior notice  
Order No.: SWSA-CMMSW-1212  
All rights reserved  
Printed in USA  
© 2012 Siemens Industry, Inc.

The information provided in this brochure contains merely general descriptions or characteristics of performance which in case of actual use do not always apply as described or which may change as a result of further development of the products. An obligation to provide the respective characteristics shall only exist if expressly agreed in the terms of contract.

All product designations may be trademarks or product names of Siemens AG or supplier companies whose use by third parties for their own purposes could violate the rights of the owners.