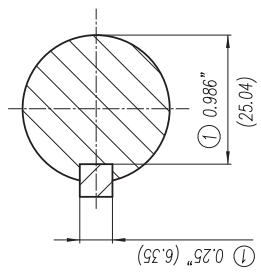


- ① Tolerances According to NEMA Std.
- ② All these dimensions corresponding to assemblies and castings shall have a tolerance as per DIN standard 1686—GTB 19.
- ③ Not According to NEMA Std.



Keyseat detail

Tolerance in mm. according to DIN-1686-GTB-19		Quantity	Parts and Measure	Drawing No. Norm. No.	Item No.	Material	Weight Lbs.
To 18	± 4.5	04,03,02,01					
Over 18 to 30	± 4.7						
Over 30 to 50	± 5						
Over 50 to 80	± 5.5						
Over 80 to 120	± 6						
Over 120 to 180	± 6.5						
Over 180 to 250	± 7						
Over 250 to 315	± 7.5						
Over 315 to 400	± 8						
Over 400 to 500	± 8.5						
Over 500 to 630	± 9.5						
Over 630 to 800	± 10						
Remark							
Name		SIEMENS					
Date		22/Ago/06					
Drawn		Fdo.Macias					
Checked							
Std. Ckd.							
Dimensions in inches		SIEMENS					
European Projection		GUADALAJARA FACTORY					
Modific.		3MSE 221 0871					
Scale		2 / 2					
W/O		Ref. 3MSE 221 0851 Replace.					
NEMA		Dimension Drawing NEMA					
IUB2 GP10A ONLY 5HP-4POL. & 1.5HP-8POL. NNM							
Type: 1LE2 GP100A							
182/184TC FRAME							

CERTIFIED PRINT							
CUSTOMER							
HP	RPW	FRAME	TYPE	WATS	PH	RZ	