

Figure similar

MLFB-Ordering data 1FK2104-5AK11-1MA0

Client order no. :
 Order no. :
 Offer no. :
 Remarks :

Item no. :
 Consignment no. :
 Project :

Basic motor data		Mechanical data	
Motor type	Permanent-magnet synchronous motor, Natural cooling, IP65	Design acc. to Code I	IM B5 (IM V1, IM V3)
Motor type	High Dynamic	Vibration severity grade	Grade A
Static torque	2.40 Nm	Shaft height	40
Static current	4.4 A	Flange size (AB)	80 mm
Maximum torque	7.60 Nm	Centering ring (N)	70 mm
Maximum current	16.0 A	Hole circle (M)	90 mm
Maximum speed	8000 rpm	Screw-on hole (S)	6.5 mm
Rotor moment of inertia	0.650 kgcm ²	Overall length (LB)	170 mm
Weight	3.7 kg	Diameter of shaft (D)	19 mm
		Length of shaft (E)	40 mm
		Length of flange diagonal (P)	105 mm
		Shaft extension	Fitted key

Rated data

SINAMICS S210, 3AC 400V

Rated speed	6000 rpm
Rated torque	1.70 Nm
Rated current	3.2 A
Rated power	1.07 kW

Encoder system

Encoder system	Encoder AM22DQC: Absolute encoder 22 bit + 12 bit multiturn
----------------	---

Motor connection

Connection type	OCC for S210
Connector size	M17

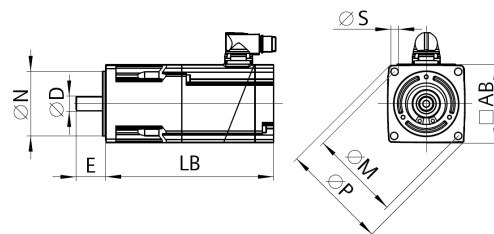
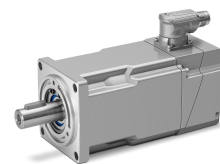


Figure similar



MLFB-Ordering data

1FK2104-5AK11-1MA0

Figure similar

Holding brake

Holding torque 3.30 Nm

Opening time 50 ms

Closing time 15 ms

Maximum single switching energy ¹⁾ 270.0 J

Service life, operating energy 120000 J

Holding current 0.2 A

Break-induced current for 500 ms ²⁾ 1.2 A

¹⁾ Up to three consecutive emergency stops and up to 25% of all emergency stops as a W_{max} high energy stop possible.

²⁾ Typical value for 20°C ambient temperature. At -15°C the break-induced currents can be increased by up to 30%.