

- Electrically held contactors
- Convertible to mechanically held
- Non-combination type open and enclosed
- cULus listed file #E 14900 (open contactors), #E27683 (enclosed contactors)

No. of Poles		Enclosure Type			
		Open	1	3/3R/12 [1]	4/4X S.S.
N.C.	N.O.	Catalog Number			
2	0	LCE00C200***A	LCE01C200***A	LCE02C200***A	LCE04C200***A
3		LCE00C300***A	LCE01C300***A	LCE02C300***A	LCE04C300***A
4		LCE00C400***A	LCE01C400***A	LCE02C400***A	LCE04C400***A
5		LCE00C500***A	LCE01C500***A	LCE02C500***A	LCE04C500***A
6		LCE00C600***A	LCE01C600***A	LCE02C600***A	LCE04C600***A
7		LCE00C700***A	LCE01C700***A	LCE02C700***A	LCE04C700***A
8		LCE00C800***A	LCE01C800***A	LCE02C800***A	LCE04C800***A
1		1	LCE00C101***A	LCE01C101***A	LCE02C101***A
2	LCE00C201***A		LCE01C201***A	LCE02C201***A	LCE04C201***A
3	LCE00C301***A		LCE01C301***A	LCE02C301***A	LCE04C301***A
4	LCE00C401***A		LCE01C401***A	LCE02C401***A	LCE04C401***A
5	LCE00C501***A		LCE01C501***A	LCE02C501***A	LCE04C501***A
6	LCE00C601***A		LCE01C601***A	LCE02C601***A	LCE04C601***A
7	LCE00C701***A		LCE01C701***A	LCE02C701***A	LCE04C701***A
8	LCE00C801***A		LCE01C801***A	LCE02C801***A	LCE04C801***A
0	2	LCE00C002***A	LCE01C002***A	LCE02C002***A	LCE04C002***A
1		LCE00C102***A	LCE01C102***A	LCE02C102***A	LCE04C102***A
2		LCE00C202***A	LCE01C202***A	LCE02C202***A	LCE04C202***A
3		LCE00C302***A	LCE01C302***A	LCE02C302***A	LCE04C302***A
4		LCE00C402***A	LCE01C402***A	LCE02C402***A	LCE04C402***A
5		LCE00C502***A	LCE01C502***A	LCE02C502***A	LCE04C502***A
6		LCE00C602***A	LCE01C602***A	LCE02C602***A	LCE04C602***A
7		LCE00C702***A	LCE01C702***A	LCE02C702***A	LCE04C702***A
8	LCE00C802***A	LCE01C802***A	LCE02C802***A	LCE04C802***A	

Table continues on Page 2

Coil Table

60Hz Voltage	***
24	024
120	120
208	208
240	240
277	277
347	347
480	480
600	600

No. of Poles		Enclosure Type			
		Open	1	3/3R/12 [1]	4/4X S.S.
N.C.	N.O.	Catalog Number			
0		LCE00C003***A	LCE01C003***A	LCE02C003***A	LCE04C003***A
1		LCE00C103***A	LCE01C103***A	LCE02C103***A	LCE04C103***A
2		LCE00C203***A	LCE01C203***A	LCE02C203***A	LCE04C203***A
3		LCE00C303***A	LCE01C303***A	LCE02C303***A	LCE04C303***A
4	3	LCE00C403***A	LCE01C403***A	LCE02C403***A	LCE04C403***A
5		LCE00C503***A	LCE01C503***A	LCE02C503***A	LCE04C503***A
6		LCE00C603***A	LCE01C603***A	LCE02C603***A	LCE04C603***A
7		LCE00C703***A	LCE01C703***A	LCE02C703***A	LCE04C703***A
8		LCE00C803***A	LCE01C803***A	LCE02C803***A	LCE04C803***A
0		LCE00C004***A	LCE01C004***A	LCE02C004***A	LCE04C004***A
1		LCE00C104***A	LCE01C104***A	LCE02C104***A	LCE04C104***A
2		LCE00C204***A	LCE01C204***A	LCE02C204***A	LCE04C204***A
3		LCE00C304***A	LCE01C304***A	LCE02C304***A	LCE04C304***A
4	4	LCE00C404***A	LCE01C404***A	LCE02C404***A	LCE04C404***A
5		LCE00C504***A	LCE01C504***A	LCE02C504***A	LCE04C504***A
6		LCE00C604***A	LCE01C604***A	LCE02C604***A	LCE04C604***A
7		LCE00C704***A	LCE01C704***A	LCE02C704***A	LCE04C704***A
8		LCE00C804***A	LCE01C804***A	LCE02C804***A	LCE04C804***A
0		LCE00C005***A	LCE01C005***A	LCE02C005***A	LCE04C005***A
1		LCE00C105***A	LCE01C105***A	LCE02C105***A	LCE04C105***A
2		LCE00C205***A	LCE01C205***A	LCE02C205***A	LCE04C205***A
3	5	LCE00C305***A	LCE01C305***A	LCE02C305***A	LCE04C305***A
4		LCE00C405***A	LCE01C405***A	LCE02C405***A	LCE04C405***A
5		LCE00C505***A	LCE01C505***A	LCE02C505***A	LCE04C505***A
6		LCE00C605***A	LCE01C605***A	LCE02C605***A	LCE04C605***A
0		LCE00C006***A	LCE01C006***A	LCE02C006***A	LCE04C006***A
1		LCE00C106***A	LCE01C106***A	LCE02C106***A	LCE04C106***A
2		LCE00C206***A	LCE01C206***A	LCE02C206***A	LCE04C206***A
3	6	LCE00C306***A	LCE01C306***A	LCE02C306***A	LCE04C306***A
4		LCE00C406***A	LCE01C406***A	LCE02C406***A	LCE04C406***A
5		LCE00C506***A	LCE01C506***A	LCE02C506***A	LCE04C506***A
6		LCE00C606***A	LCE01C606***A	LCE02C606***A	LCE04C606***A
0		LCE00C007***A	LCE01C007***A	LCE02C007***A	LCE04C007***A
1		LCE00C107***A	LCE01C107***A	LCE02C107***A	LCE04C107***A
2	7	LCE00C207***A	LCE01C207***A	LCE02C207***A	LCE04C207***A
3		LCE00C307***A	LCE01C307***A	LCE02C307***A	LCE04C307***A
4		LCE00C407***A	LCE01C407***A	LCE02C407***A	LCE04C407***A
0		LCE00C008***A	LCE01C008***A	LCE02C008***A	LCE04C008***A
1		LCE00C108***A	LCE01C108***A	LCE02C108***A	LCE04C108***A
2	8	LCE00C208***A	LCE01C208***A	LCE02C208***A	LCE04C208***A
3		LCE00C308***A	LCE01C308***A	LCE02C308***A	LCE04C308***A
4		LCE00C408***A	LCE01C408***A	LCE02C408***A	LCE04C408***A
0		LCE00C009***A	LCE01C009***A	LCE02C009***A	LCE04C009***A
1	9	LCE00C109***A	LCE01C109***A	LCE02C109***A	LCE04C109***A
2		LCE00C209***A	LCE01C209***A	LCE02C209***A	LCE04C209***A
0		LCE00C010***A	LCE01C010***A	LCE02C010***A	LCE04C010***A
1	10	LCE00C110***A	LCE01C110***A	LCE02C110***A	LCE04C110***A
2		LCE00C210***A	LCE01C210***A	LCE02C210***A	LCE04C210***A
0	11	LCE00C011***A	LCE01C011***A	LCE02C011***A	LCE04C011***A
0	12	LCE00C012***A	LCE01C012***A	LCE02C012***A	LCE04C012***A

Replace the (***) with a number from the coil table.
 (1) Type 12 field convertible to type 3/3R

Enclosure type	Description	Catalog No.
All	Single power pole	49LCPP1A
	Double power pole	49LCPP2A
	1 NO/NC auxiliary contact	49LCAC1PA
	2 NO/NC auxiliary contact	49LCAC2PA
	2-wire control module, 24VAC	49LCCM1A
	2-wire control module, 110-120VAC	49LCCM2A
	2-wire control module, 200-277VAC	49LCCM3A
	3-wire control module, 24VAC	49LCCM4A
3-wire control module, 110-120VAC	49LCCM5A	
3-wire control module, 200-277VAC	49LCCM6A	

Short Circuit Current Ratings

Fuses

Contactor Size (Amps)	Max Voltage	Protective Device Type	Max Fuse Rating (Amps)	SCCR (Amps)
30	600	Class J	60	5,000
		Class RK5	60	5,000

(1) Siemens listed circuit breaker catalog numbers

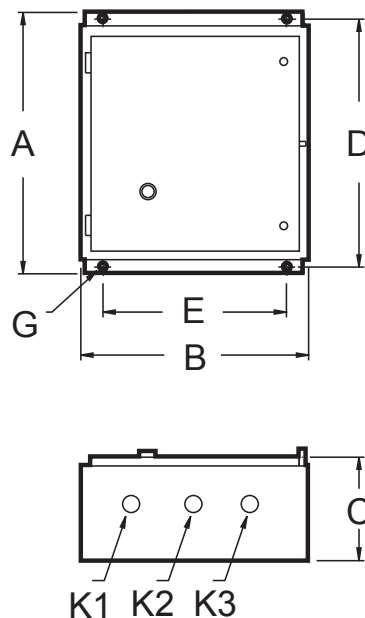
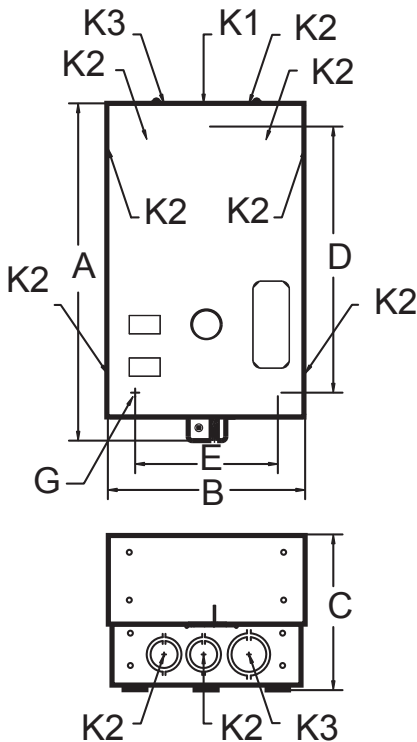
Circuit Breaker

Contactor Size (Amps)	Max Voltage	Protective Device Type (1)	Max Breaker Rating (Amps)	SCCR (Amps)
30	240	BQ3B040H	25	5,000
	480	HEG3B040L	25	5,000
	600	NGG3B040L	25	5,000

Dimensional Drawings

Figure 1

Figure 2

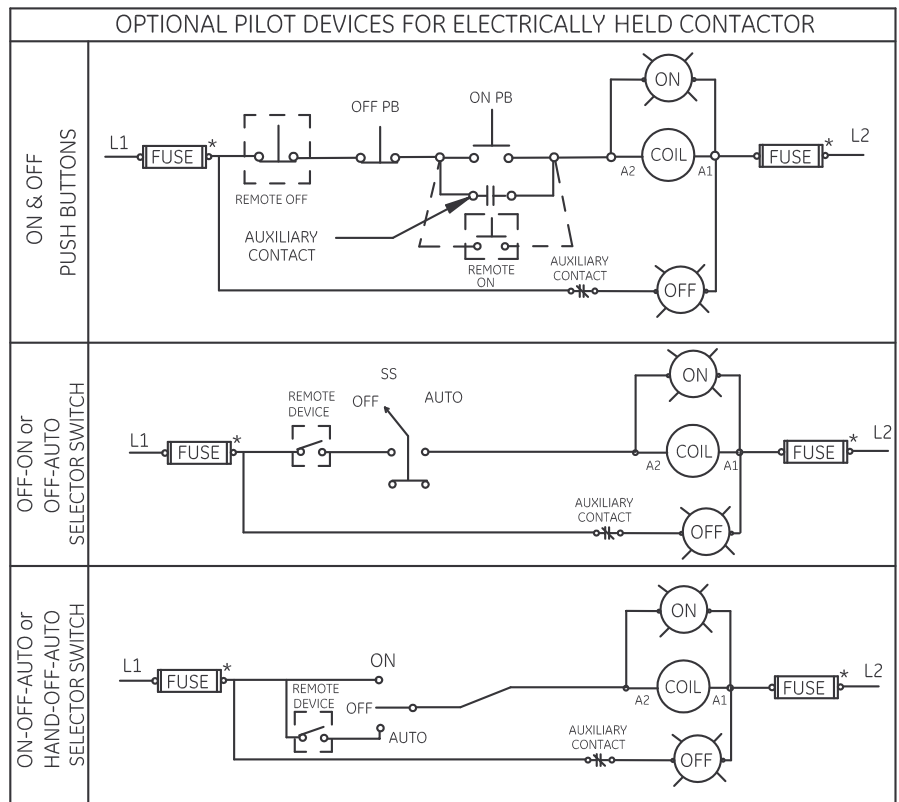
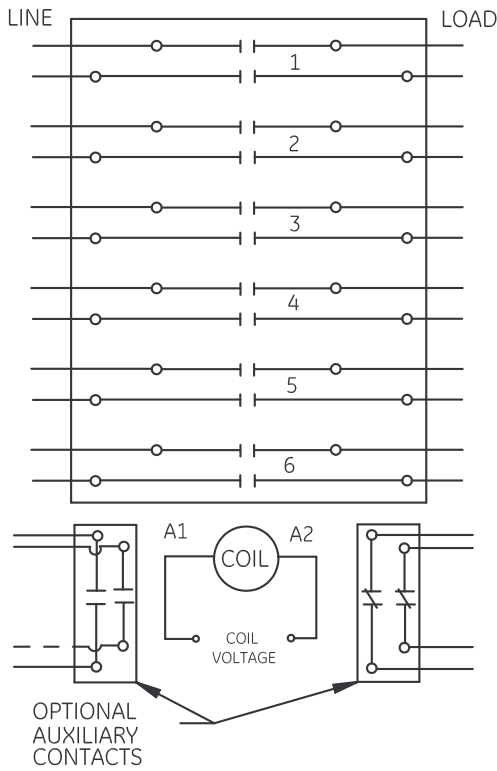


Enclosure Type	Fig.	Outline Dimensions			Mounting		Conduit Size				
		A	B	C	D	E	K1	K2	K3	K4	K5
1 without CPT	1	13.53	7.97	6.38	10.25	6.00	0.50-0.75	0.75-1	1-1.25	—	—
1 with CPT	1	19.12	11.38	7.69	15.62	8.25	0.50-0.75	1-1.25	1.5-2	—	—
12/3R & 4/4X with or w/o CPT	2	16.00	13.25	6.12	15.25	11.00	—	—	—	—	—

Wiring Diagram (Electrically Held Contactor)

Refer to control module instruction sheets for wiring of mechanically held contactors.

Contacts in positions 1 through 4 can be used as either NO or NC.
 Contacts in positions 5 and 6 can be used only as NO.
 Main contacts are shown in open position.
 Line and load terminals are reversible.

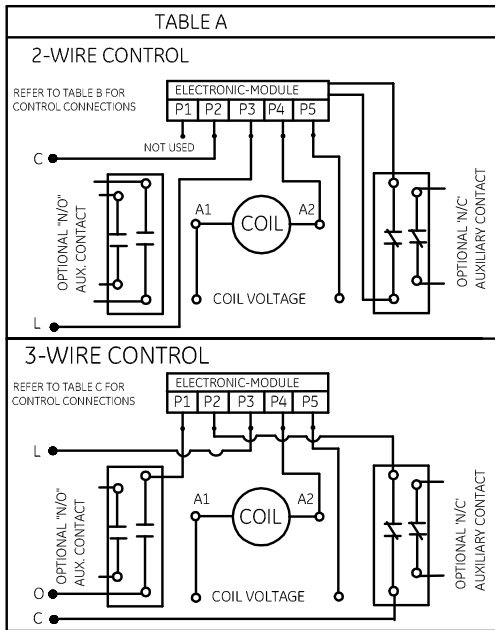
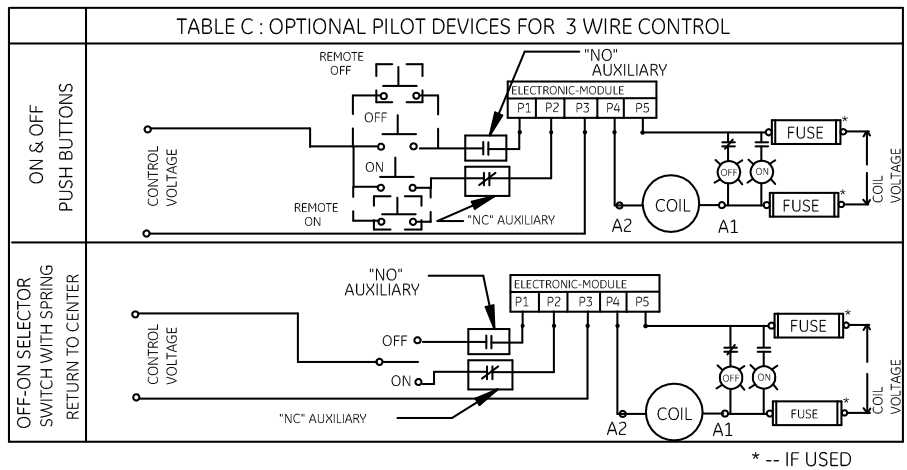
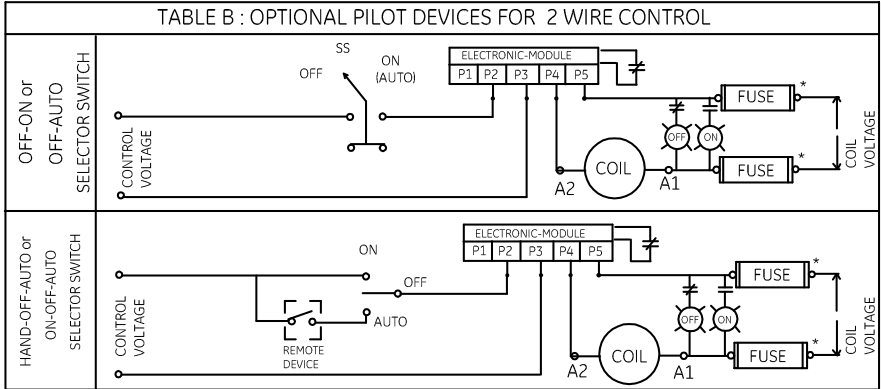
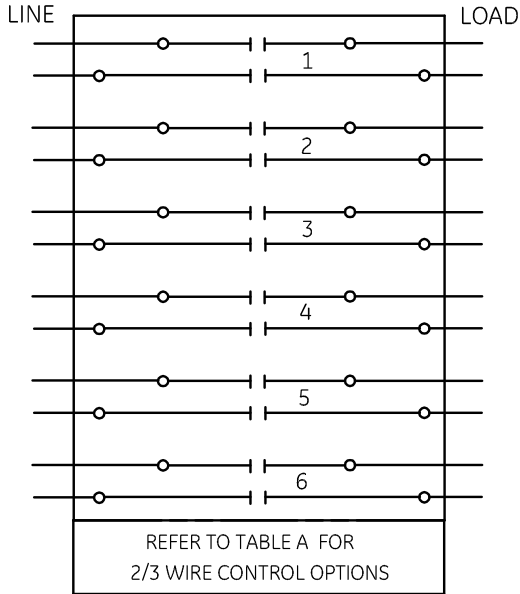


* -- IF USED

Notes:

1. Refer to the NEC or local electric code as required.
2. Additional over current protection for control circuit may be required.
3. When coil and line voltages are same, the control voltage may be derived from the line for supply.
4. Ground lug kit number 49D11960001 meets CSA standard 22.2 no. 14-1973 and is rated for 1 conductor 2-14 AWG AL/CU wire.

Contacts in positions 1 through 4 can be used as either NO or NC.
 Contacts in positions 5 and 6 can be used only as NO.
 Main contacts are shown in open position.
 Line and load terminals are reversible.



Notes:

1. Refer to the NEC or local electric code as required.
2. Additional over current protection for control circuit may be required.
3. When coil and line voltages are same, the control voltage may be derived from the line for supply.
4. Ground lug kit number 49D11960001 meets CSA standard 22.2 no. 14-1973 and is rated for 1 conductor 2-14 AWG AL/CU wire.