

MLFB-Ordering data 1FG1208-3QG02-2AD1-Z
D01+G23+K06+N23+Q93

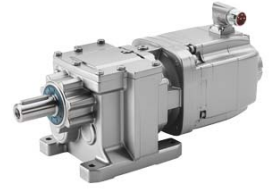


Figure similar

Client order no. :

Order no. :

Offer no. :

Remarks :

Item no. :

Consignment no. :

Project :

Gearbox data

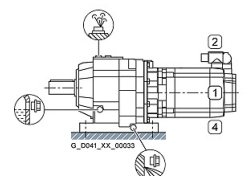
Gear box type	D89	Radial force maximum	18500 N
Gearbox basic type	Helical geared	Max. permissible radial force with Mmax	18500 N
Gearbox size	89	Moment of inertia	3.80 kgcm ²
Transmission stages	3	Torsional stiffness	96 Nm/°
Transmission (ratio)	74.30	Efficiency	0.93
Gear number relation	8544/115	Mounting position	M1
Output moment maximum (short-time)	1920 Nm	Mounting type	Foot-mounted
max. input speed (briefly)	4500 rpm	Output shaft version	Solid shaft standard III
Output speed short-time	61 rpm	Output shaft dimension	V60x120 mm
Emergency off output moment (1000 cycles)	2850 Nm	Gearbox flange diameter	-/-
		Figure 2 torque support	-

General tech. specifications

Degree of protection	IP65
Color of the housing	Standard painting (Anthracite RAL 7016)
Specification	CE / UL / CSA / EAC / cRUus
Net weight	89.24 kg
1m-sound pressure level L _{pA} (ToI.+3dB(A))	75
Plug position	left (3)
Connector size	1

Lubrication and sealing

Gear oil	Mineral oil CLP ISO VG220
Output shaft sealing	Seal longer service life
Oil charge	2.00 l



MLFB-Ordering data 1FG1208-3QG02-2AD1-Z
D01+G23+K06+N23+Q93

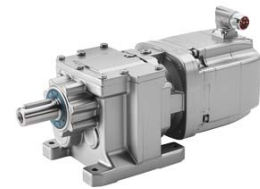


Figure similar

Motor data		Limiting data	
Motor type	Permanent-magnet synchronous motor	Maximum speed (short-time)	5000 rpm
Motor type	Compact	Maximum torque	55.00 Nm
DC-link voltage, max.	510...720V	Motor current short term	28.0 A
Shaft height	100 mm	Optimum operating point	
Cooling	Natural cooling	Optimum speed	2000 rpm
Rated speed	2000 rpm	Optimum power	2.55 kW
Rated torque (100K)	12.30 Nm	Recommended Motor Module	
Rated power	2.58 kW	Rated inverter current	9.0 A
Rated current (100K)	6.10 A	Maximum inverter current	27.0 A
Static torque	16.20 Nm	Maximum torque	53.4 Nm
Static current	7.80 A	Holding brake	
Moment of inertia	62.00000 kgcm ²	Holding brake	with holding brake
Efficiency η	92 %	Holding brake version	Permanent-magnet brake
Temperature monitoring	Pt1000 temperature sensor	Power supply voltage	DC 24 V \pm 10 %
Encoder system	Encoder AS20DQI: absolute encoder single-turn 20 bits	Braking torque M_{1Br} / M_{2Br}	11.00 Nm
		Holding torque M_{4Br}	23.00 Nm
		Opening time	300.0 ms
		Closing time	70.0 ms
		Maximum switching energy per braking action	3380.0 J

Info servo geared motor

Outside the standard temperature range of -10 to +40 °C, further selectable options must be observed, in addition to the lubricant selection.

Further, you have to check the suitability of the components and options used for the requested temperature range.

MLFB-Ordering data 1FG1208-3QG02-2AD1-Z
D01+G23+K06+N23+Q93

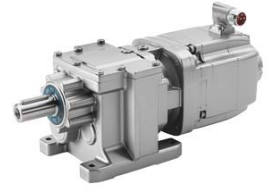


Figure similar

Options

D01	M1 for helical and parallel shaft gearboxes
G23	Seal longer service life
K06	Mineral oil CLP ISO VG220
N23	Standard holding brake (permanent magnet brake)
Q93	Plug position left

Standards

Compliance with standards CE / UL / CSA / EAC / cRUus

CE marking EN 60034