

Figure similar

MLFB-Ordering data 1FK2206-2AF10-1MB0

Client order no. :
 Order no. :
 Offer no. :
 Remarks :

Item no. :
 Consignment no. :
 Project :

Basic motor data		Mechanical data	
Motor type	Permanent-magnet synchronous motor, Natural cooling, IP64	Design acc. to Code I	IM B5 (IM V1, IM V3)
Motor type	Compact	Vibration severity grade	Grade A
Static torque	6.50 Nm	Shaft height	63
Static current	5.0 A	Flange size (AB)	125 mm
Maximum torque	18.00 Nm	Centering ring (N)	110 mm
Maximum current	17.8 A	Hole circle (M)	130 mm
Maximum speed	6000 rpm	Screw-on hole (S)	9.0 mm
Rotor moment of inertia	9.400 kgcm ²	Overall length (LB)	205 mm
Weight	7.9 kg	Diameter of shaft (D)	24 mm
		Length of shaft (E)	50 mm
		Length of flange diagonal (P)	158 mm
		Shaft extension	Fitted key

Rated data

SINAMICS S120, BLM/SLM 3AC 400V

Rated speed	3000 rpm
Rated torque	5.40 Nm
Rated current	4.4 A
Rated power	1.71 kW

Encoder system

Encoder system	Encoder AM22DQC: Absolute encoder 22 bit + 12 bit multiturn
----------------	---

Motor connection

Connection type	Double cable connection for S120
Connector size	M23

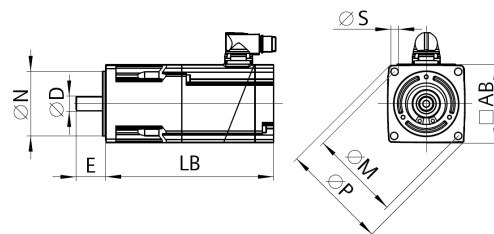
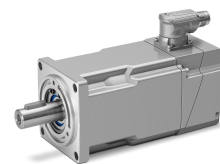


Figure similar



MLFB-Ordering data

1FK2206-2AF10-1MB0

Figure similar

Holding brake

Holding torque 13.00 Nm

Opening time 100 ms

Closing time 50 ms

Maximum single switching energy ¹⁾ 1550.0 J

Service life, operating energy 774000 J

Rated current 0.7 A

¹⁾ Up to three consecutive emergency stops and up to 25% of all emergency stops as a Wmax high energy stop possible.