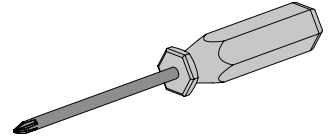
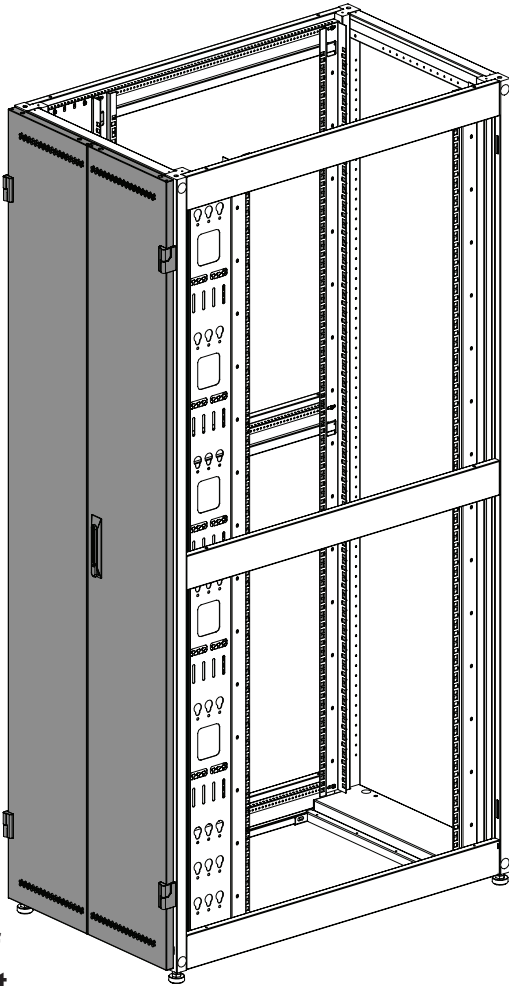


Tool List:

- T25 Torx driver
- Phillips Screwdriver



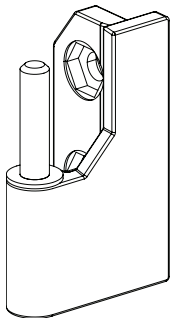
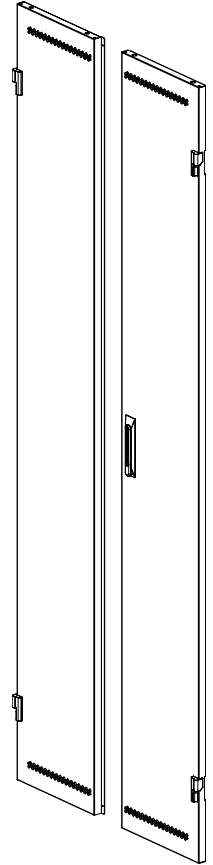
D**RD* Installed



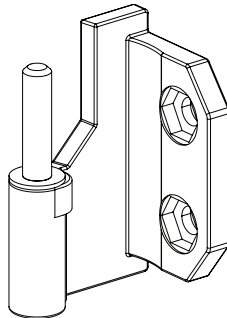
Net-Verse D-Type Cabinet

Rear of Cabinet

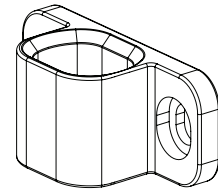
Cabinet Rear Split Doors
Qty: 1



Male Door Hinge
Right side
(Top Hinge is longer)
Qty: 2



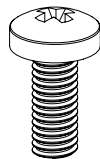
Male Door Hinge
Left side
(Top Hinge is longer)
Qty: 2



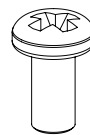
Rear Door
Catch
Qty: 2



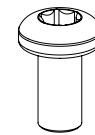
12AWG Male Ground Whip
Qty: 2



M6x1.0 x 15mm
Pan-Head Phillips
Machine Screw
Qty: 8



M5x0.8 x 10mm
Phillips Head Screw
Qty: 4



M5x0.8 x 10mm
Pan Head
Torx Screw
Qty: 2



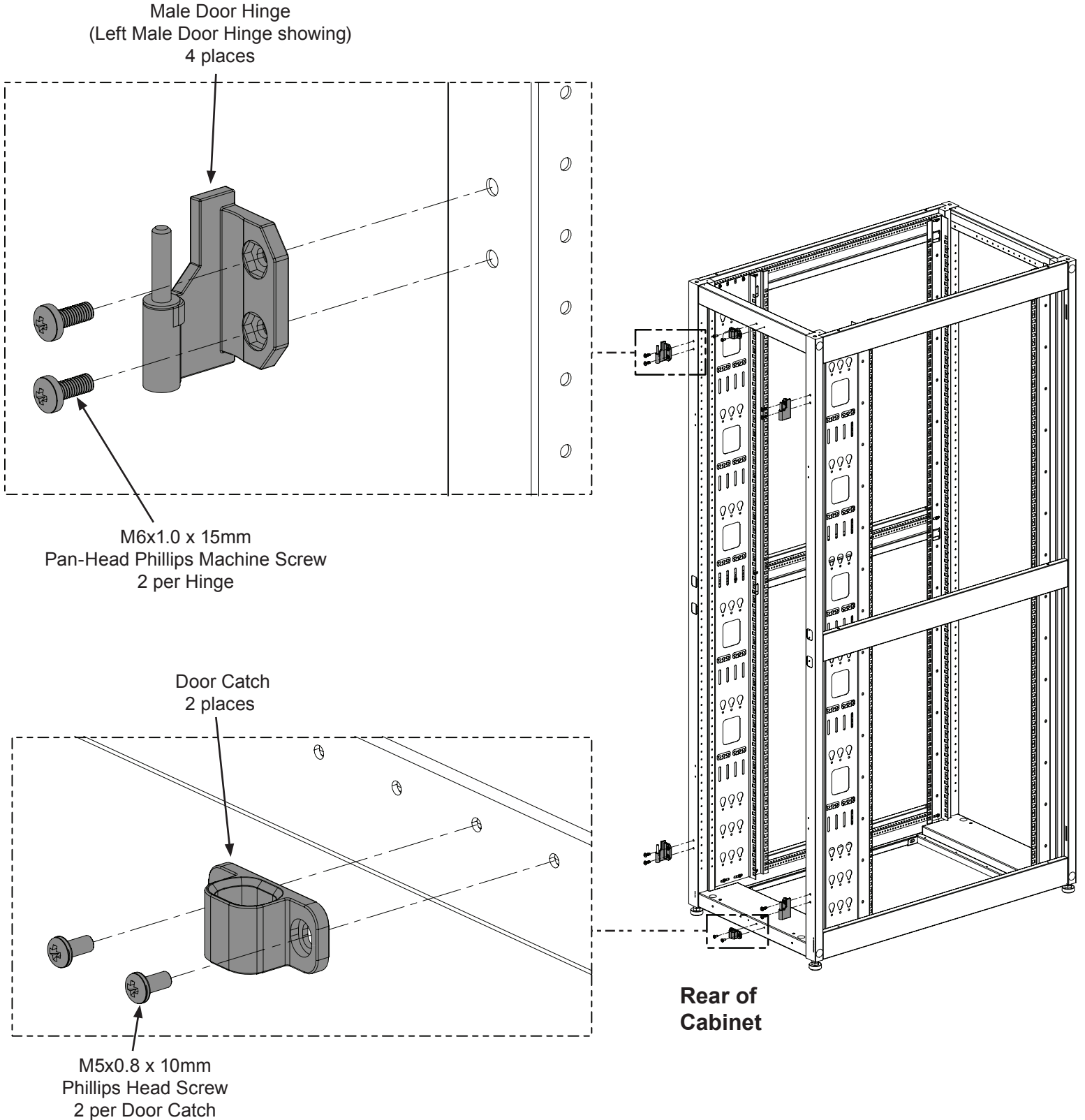
M6 Star Washer
Qty: 2

For Technical Support: www.panduit.com/resources/install_maintain.asp

Install Male Door Hinges and Door Catches (If not already present)

- Install (4) Male Door Hinges. Two (2) on each side of Cabinet as shown.
- Install (2) Door Catches. One (1) at the top of the Cabinet and one (1) at the bottom as shown.

NOTE: There are (2) left side and (2) right side Door Hinges. They must be installed on the correct side in order for Rear Split Doors to fit and operate properly. The top Hinge Pins are longer than the bottom Hinge Pins. Verify the Hinge Pin lengths prior to installation.



 **DANGER**

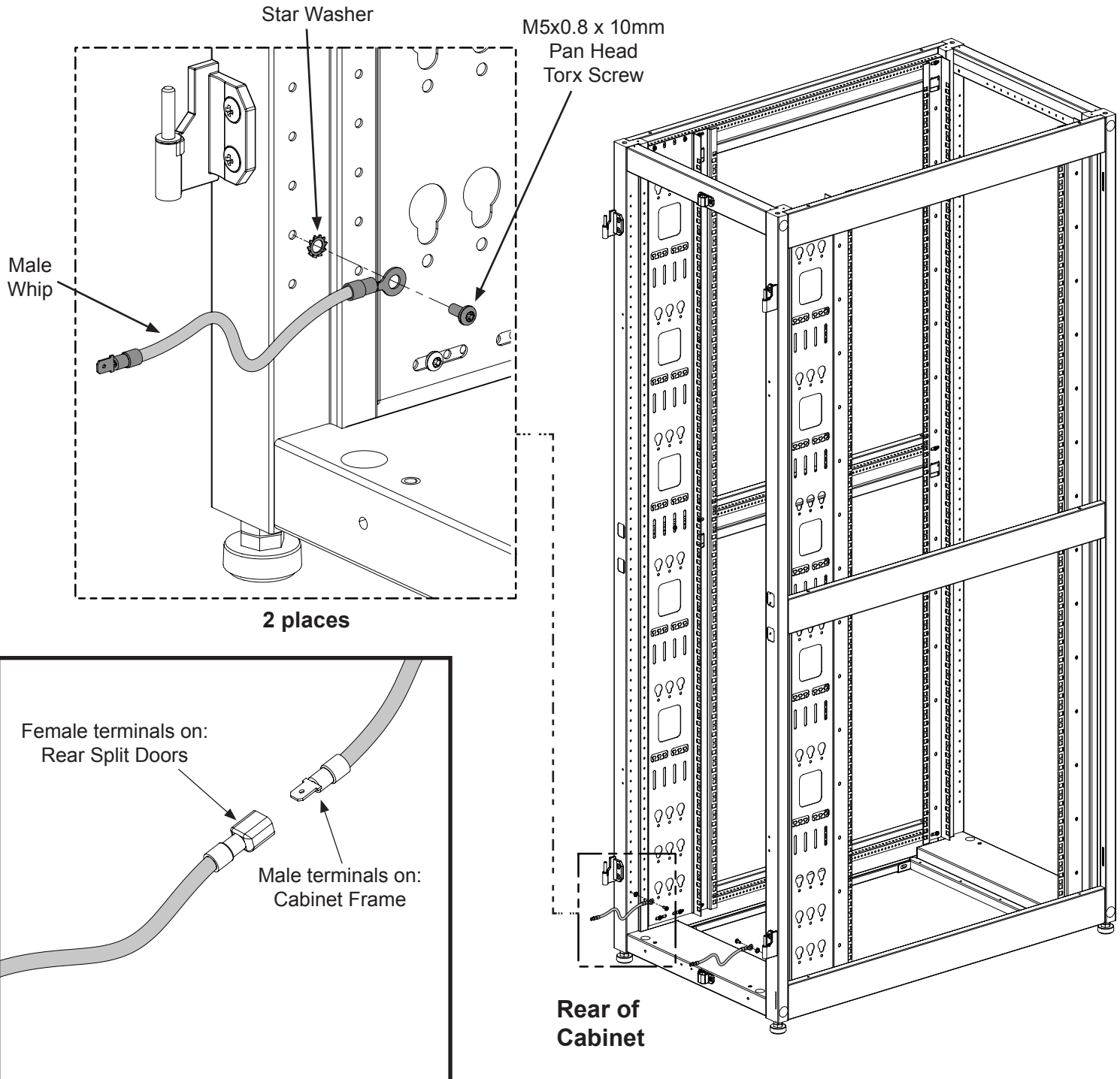
Electrical Shock Hazard

Each cabinet must be connected to the Common Bonding Network (CBN).

FAILURE TO FOLLOW THESE INSTRUCTIONS CAN LEAD TO SERIOUS INJURY, DEATH, OR DAMAGE TO YOUR EQUIPMENT.

Grounding

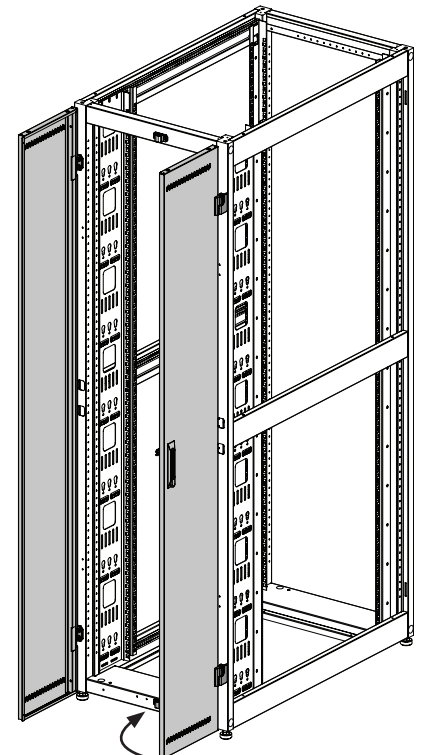
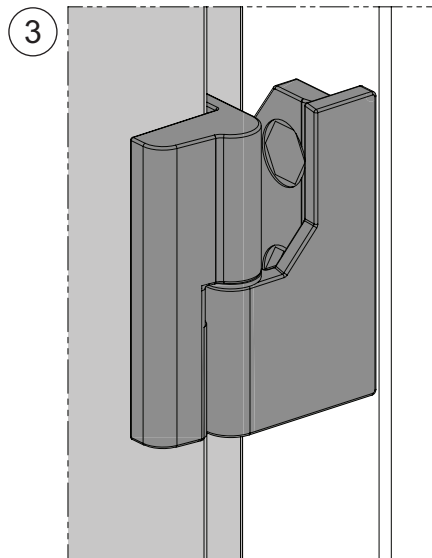
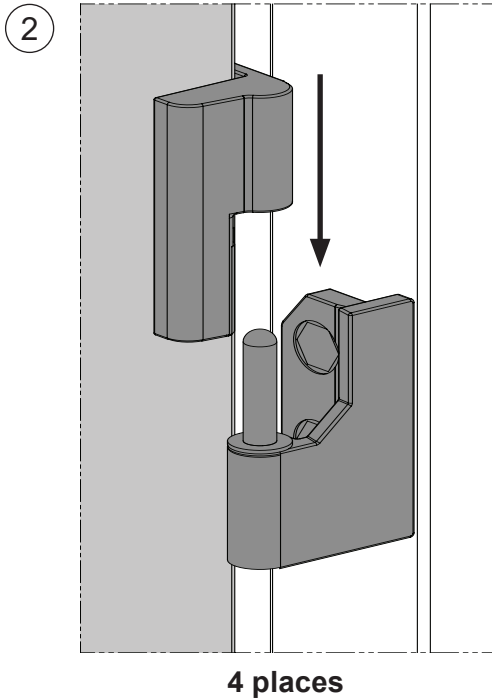
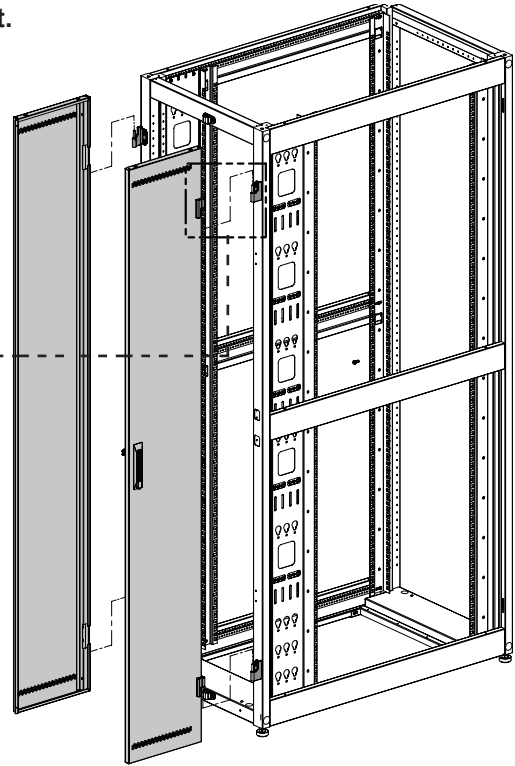
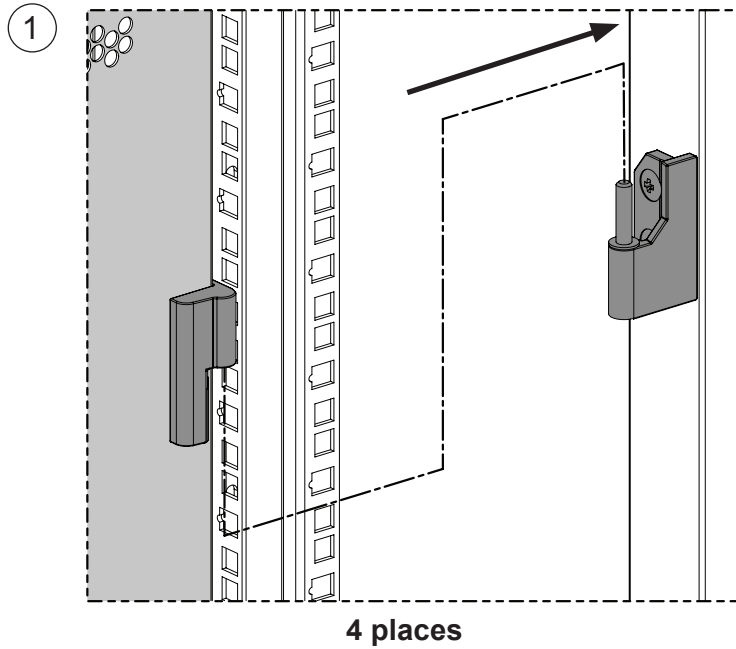
- If necessary, attach the provided Male Whips to the rear of the Cabinet where shown.
- After installation of the Rear Split Doors, connect the Male Whips from the Cabinet to the Female Whips on the Rear Split Doors.



Install Rear Split Doors

- Position Rear Split Doors approximately 90° to Cabinet frame.
- Place Rear Split Doors female hinges onto the male hinges on the Cabinet frame.
- Attach grounding terminals (see page 3).
- **Reverse Steps** to remove Front Door.

Note: Top hinge pins are longer than bottom pins. Align Top pins first.



For Instructions in Local Languages
and Technical Support:

www.panduit.com/resources/install_maintain.asp

PANDUIT
www.panduit.com

E-mail:
techsupport@panduit.com

Phone:
866-405-6654