



Reversing motor starter
NEMA controller size 6
3-Phase, 3-Pole
Maximum voltage rating 600VAC
Max Hp 60Hz: 150@200V; 200@230V; 400@460V; 400@575V
Solid-state overload relay(s) with 160 - 630A range
Control voltage 440-480V 50-60Hz/DC
NEMA Type 1 enclosure

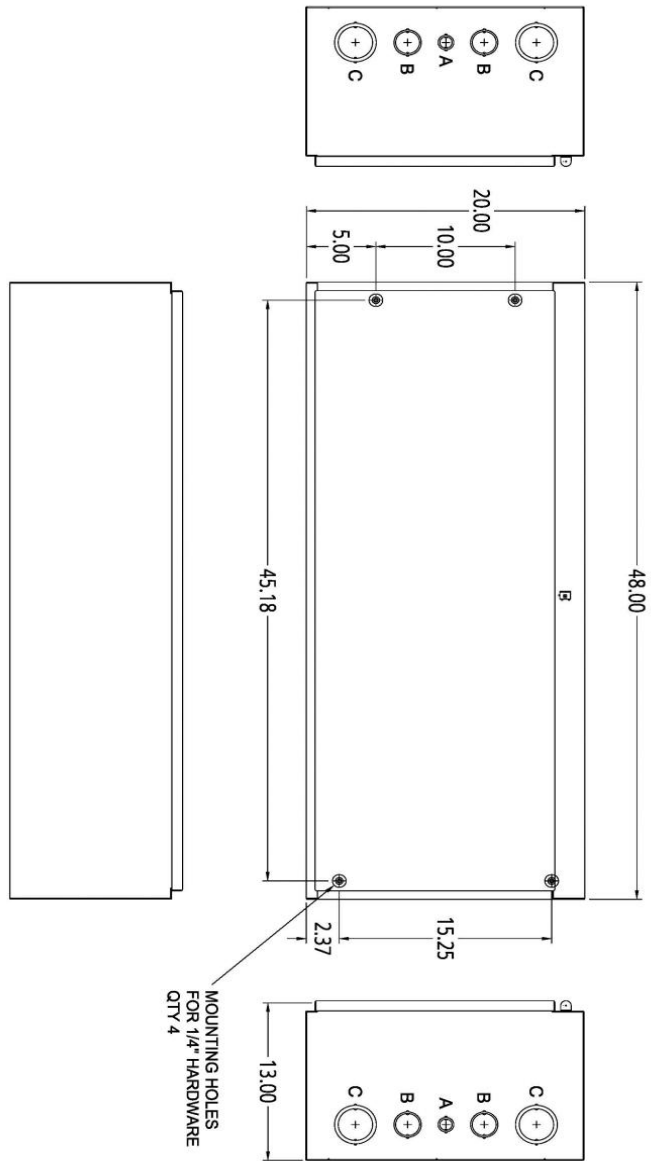


Image is representative and may not depict the actual product.

General technical data:	
Weight	176.5 lb
Height x Width x Depth	48 x 20 x 13 in.
Finger-safe (main circuit / control circuit)	NA / NA
Maximum altitude	6560 ft
Ambient storage temperature	(-30 to 65)°C / (-22 to 149)°F
Ambient operating temperature	(-20 to 40)°C / (-4 to 104)°F
Humidity (% non-condensing)	(no data)
Rated impulse voltage resistance	(no data)
Rated insulation voltage	(no data)
Country of origin	USA
Contactors:	
Number of NO main contacts	6
Amp rating	540A
Mechanical operating cycles	10,000,000
Internal/standard auxiliary contact:	
Number of NC / NO auxiliary contacts	2NC / 2NO
Rating	10A@240VAC (A300), 2.5A@250VDC (Q300)
Optional auxiliary contact:	
Max number of NC / NO auxiliary contacts	4NC / 4NO
Rating	10A@240VAC (A300), 2.5A@250VDC (Q300)
Coil:	
Voltage	440-480V 50-60Hz/DC Coil
Sealed watts	10W
Inrush / sealed power	830 / 9.2 VA
Normal coil operating limits (% of rated voltage)	85% - 110%
Typical drop-out volts (% of rated voltage)	60%
Pick-up time / Drop-out time	45-100 / 60-100 msec
Overload Relay:	
Current range	160 - 630A
Trip Class	Class 20
Trip detection	Overload
Phase failure sensitivity	Yes
Repeat accuracy	(no data)
Reset options	Manual and automatic
External reset	Yes
Test function	Electronics & manual actuation
Conformal coating on printed circuit board	No
Number of NC / NO auxiliary contacts	1NC / 1NO
Rating of auxiliary contacts	5A@600VAC (B600), 1A@250VDC (R300)
Single contact isolation	600V

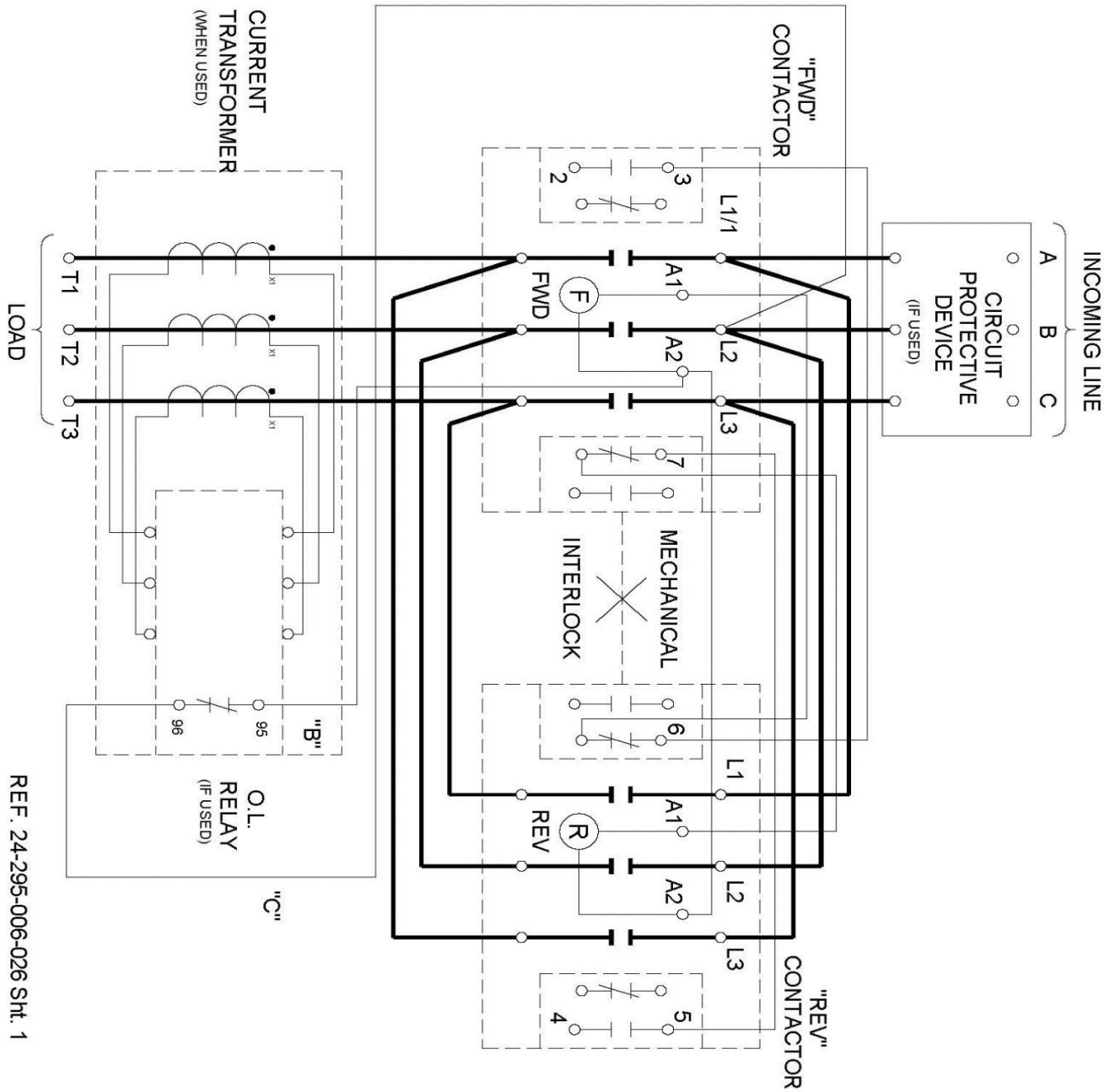
Dual contact isolation	300V differing polarity / 600V common polarity
Enclosure:	
Type	NEMA Type 1 enclosure
Rating	Indoor general purpose use
Mounting/wiring:	
Mounting orientation	Vertical
Mounting type	Surface
Line side connection type / torque	Box lug / 180-195 lb-in.
Line side solid & stranded conductors	3/0 AWG - 600 MCM (front only) or 250 - 500 MCM (back only) or 2 x 2/0 Al
Load side connection type / torque	Box lug / 180-220 lb-in.
Load side solid & stranded conductors	2 x 2/0 AWG - 500 MCM
Coil connection type / torque	Screw / 7 lb in. - 10 lb in.
Coil solid & stranded conductors	2 x (18 - 14 AWG) CU 60/75°C
Main auxiliary contact connection type / torque	Screw / 7 lb in. - 10 lb in.
Main auxiliary contact solid & stranded conductors	2x (20 - 16), 2x (18 - 14) CU 60/75oC
OLR auxiliary contact connection type / torque	Screw / 7 lb in. - 10 lb in.
OLR auxiliary contact solid & stranded conductors	2 x (20 - 14 AWG) CU 60/75°C
Short circuit current rating:	
Fuses	18kA@600V (Class H or K); 100kA@600V (Class R or J)
Thermal Magnetic Circuit Breaker	18kA@600V
Certificates/approvals:	
	UL (file no. E14900)
	cUL (file no. E14900 for Canada)
	CSA (file no. 006535 C 000)
	ISO 9001 certification
Additional information:	
	Brochure

OUTLINE 48X20X13 NEMA 1



LETTER	CONDUIT SIZE
A	1/2" & 3/4" CONDUIT
B	1-1/4" & 1-1/2" CONDUIT
C	2" & 2-1/2" CONDUIT

DIMENSIONS ARE IN INCHES.
FILE NAME: SFIS-D65608013-0211



REF. 24-295-006-026 Sht. 1

MG - 2 x 500 MCM (both front & back) 75°C AL/CU