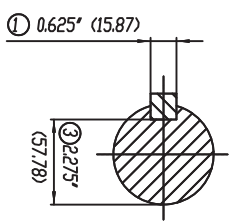


- ① Tolerances According to NEMA Std.
- ② All these dimensions corresponding to assemblies and castings shall have a tolerance as per DIN standard 1686-GTB-19.
- ③ Not according to NEMA std.

1/2"-13NC Tapped Hole for Grounding Both sides of Frame

CERTIFIED PRINT

CUSTOMER		SIBU	
FR	BM	FRAME	TYPE
IP	BM	FRAME	TYPE
VOLTS		HZ	



Keyseat detail

Tolerance in mm, according to DIN-1686-GTB-19	Quantity	Parts and Measure	Drawing No. Norm. No.	Item No.	Material	Weight Lbs.
to 18	04					
Dver 18 to 30	03					
Dver 30 to 50	02					
Dver 50 to 80	01					
Dver 80 to 120						
Dver 120 to 180						
Dver 180 to 250						
Dver 250 to 315						
Dver 315 to 400						
Dver 400 to 500						
Dver 500 to 630						
Dver 630 to 800						

European Projection	Modificat.	① Drawing changed to metric current input seal design 3/23/09 MWZ
Dimensions in inches:		
Drawn	Date	Name
Checked	03/11/04	P. Velasco
Std. Cnd.		
SIEMENS		
GUADALAJARA FACTORY		
Dimension	Drawing NEMA	Scale
3MSE 750 12940	SUPER 440 S449SS FRAME	W/D
Ref. 3MSE 750 0987 a)	Replace.	2 / 2