

Power Mod

Type WC House Power Module

WC Series House Power Module

Power Mod's patented WC family of house power modules offers the ability to combine power distribution to branch circuits within a module that is connected directly to the thru bus. This reduces wall space needed, decreases labor and material cost (for installing a separate panel), and simplifies the electrical distribution system.

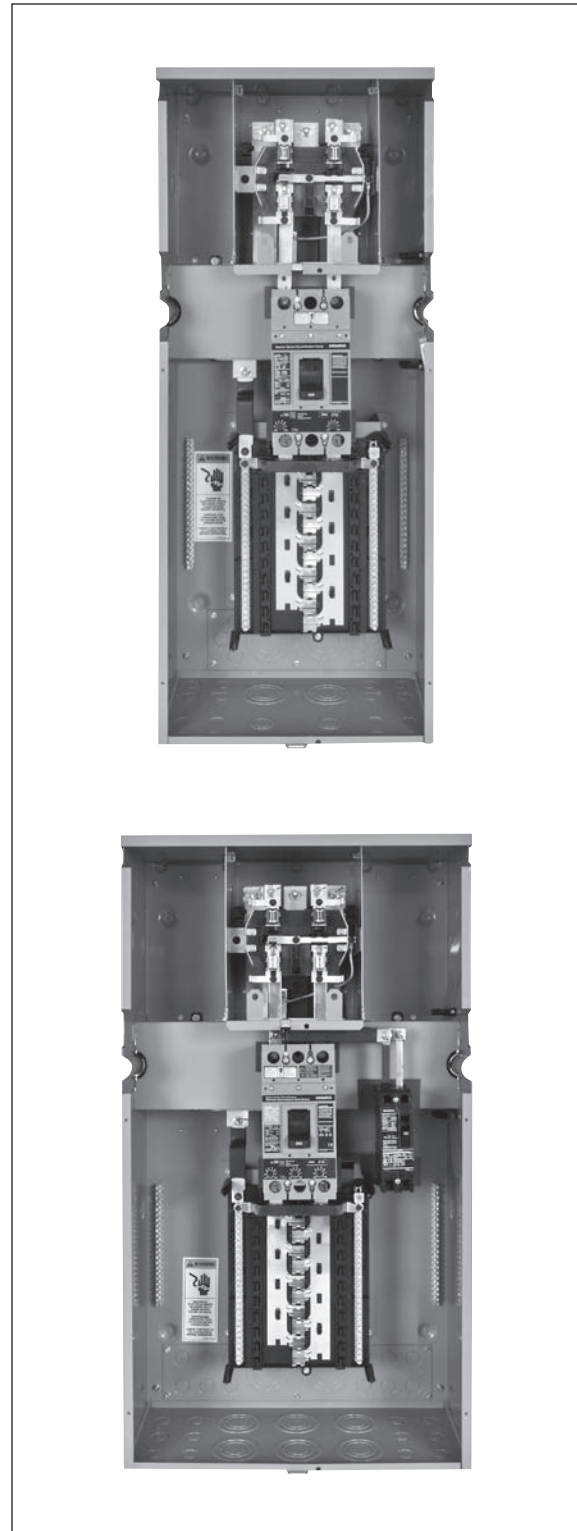
Key Features of the WC family are:

- Ring or Ringless Covers (horn bypass available with ringless)
- Three or single phase thru bus with single phase output
- 20 space, 40 circuit 100K AIC rated interior
- Available subfeed breaker which can be used for large remote loads (such as elevators) or alternative energy inputs (solar)
- Removable knock out plate
- Load wires can exit out of the top, back, or bottom

The line of WC house power modules allow for un-precedented flexibility and savings. All of this while featuring the industry-leading QuickSystem that allows for the fastest install time.

Series House Power Module quick reference

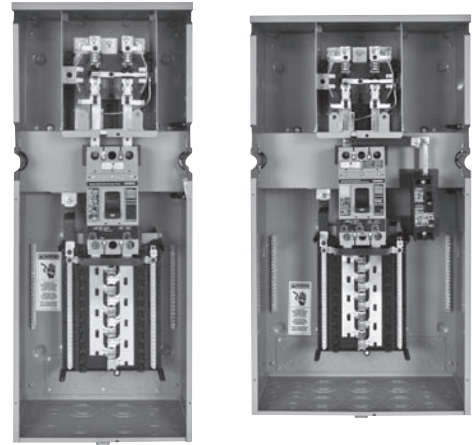
- 1 Position, Single Phase Meter Socket
- 250 Amp maximum rating per device. Load center interior limited to 225amps max.1200 Amp thru-bus rating
- UL standard 67
- UL file no. E27100
- AIC rating: 100k
- Voltage:
 - Single phase 120/240V AC max.
 - Three phase in single phase out
 - 120/208V AC max.
 - 240/120V AC max.
- All swing latches and rivets are stainless steel.
- Outdoor= NEMA 3R rated
- 20 space, 40 circuit PL Series copper bus interior
- G90 galvanized steel
- ANSI 61 paint
- Optional subfeed or alternative energy input (solar) up to 125amps.
- Custom options available! Details on page 2-141.



Type WC House Power Module: Ring Style

Main Features:

- 1 Position, Single Phase Meter Socket
- 250 Amp maximum rating per device. Load center interior limited to 225amps max.
- 1200 Amp thru-bus rating



Residential 4-Jaw Ring Type Meter-Loadcenter Stacks: 1-Phase, 3-wire, SN, Thru Bus, Distribution, & Subfeed

Catalog Number	Main Breaker - Distribution ^②		Distribution		Subfeed Breaker (Type HED4) ^②	Maximum AIC	Dimensions (inches) ^①			Knockout Diagram
	Amperage	Type	Spaces	Circuits	Amperage		Height	Width	Depth	
WC2040B1T1	225	HFXD6	20	40	N/A	100k	39.10	16.22	12.14	WC-1
WC2040B1T2	200	HFXD6	20	40	50	100k	39.10	21.75	12.14	WC-2
WC2040B1T3	175	HFXD6	20	40	60	100k	39.10	21.75	12.14	
WC2040B1T4	175	HFXD6	20	40	70	100k	39.10	21.75	12.14	
WC2040B1T5	150	HFXD6	20	40	80	100k	39.10	21.75	12.14	
WC2040B1T6	150	HFXD6	20	40	90	100k	39.10	21.75	12.14	
WC2040B1T7	150	HFXD6	20	40	100	100k	39.10	21.75	12.14	
WC2040B1T8	150	HFXD6	20	40	110	100k	39.10	21.75	12.14	
WC2040B1T9	125	HFXD6	20	40	125	100k	39.10	21.75	12.14	

Residential 5-Jaw Ring Type Meter-Loadcenter Stacks: 3-Phase, 4-wire SN, Thru Bus and 1-Phase, 3-wire, SN, Distribution & Subfeed

Catalog Number	Main Breaker - Distribution ^②		Distribution		Subfeed Breaker (Type HED4) ^②	Max. AIC	Dimensions (inches) ^①			Phasing ^③	Knockout Diagram
	Amperage	Type	Spaces	Circuits	Amperage		Height	Width	Depth		
WC2040B2T1J	225	HFXD6	20	40	N/A	100k	39.10	16.22	12.14	AC	WC-1
WC2040B2T2J	200	HFXD6	20	40	50	100k	39.10	21.75	12.14	AC	WC-2
WC2040B2T3J	175	HFXD6	20	40	60	100k	39.10	21.75	12.14	AC	
WC2040B2T4J	175	HFXD6	20	40	70	100k	39.10	21.75	12.14	AC	
WC2040B2T5J	150	HFXD6	20	40	80	100k	39.10	21.75	12.14	AC	
WC2040B2T6J	150	HFXD6	20	40	90	100k	39.10	21.75	12.14	AC	
WC2040B2T7J	150	HFXD6	20	40	100	100k	39.10	21.75	12.14	AC	
WC2040B2T8J	150	HFXD6	20	40	110	100k	39.10	21.75	12.14	AC	
WC2040B2T9J	125	HFXD6	20	40	125	100k	39.10	21.75	12.14	AC	

① Dimensions shown are representative of outside box dimensions and do not include allowances for mounting bumps, endwalls, covers, hubs, or hardware protrusions. Dimensions are subject to change.

② Breakers are factory installed.
③ Can be re-phased in the field.

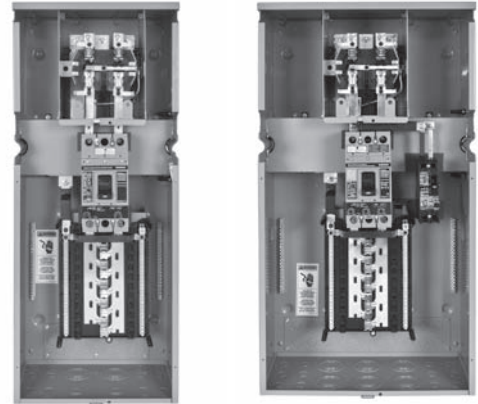
Power Mod

• Revised •
06/01/13

Type WC House Power Module: Ringless Style

Main Features:

- 1 Position, Single Phase Meter Socket
- 250 Amp maximum rating per device. Load center interior limited to 225amps max.
- 1200 Amp thru-bus rating



METER CENTERS 2

Residential 4 or 5-Jaw Ringless Type Meter-Loadcenter Stacks: 1-Phase, 3-wire, SN, Thru Bus, Distribution, & Subfeed

Catalog Number			Main Breaker-Distribution ^②		Distribution		Subfeed Breaker (Type HED4) ^②	Max. AIC	Dimensions ^①			Knockout Diagram
No bypass, 4J	No bypass, 5J	Horn Bypass, 5J	Amp.	Type	Spaces	Circuits	Amperage		Height	Width	Depth	
WC2040B1T1R	WC2040B1T1RJ	WC2040B1T1RJB	225	HFXD6	20	40	N/A	100k	39.10	16.22	12.14	WC-1
WC2040B1T2R	WC2040B1T2RJ	WC2040B1T2RJB	200	HFXD6	20	40	50	100k	39.10	21.75	12.14	WC-2
WC2040B1T3R	WC2040B1T3RJ	WC2040B1T3RJB	175	HFXD6	20	40	60	100k	39.10	21.75	12.14	
WC2040B1T4R	WC2040B1T4RJ	WC2040B1T4RJB	175	HFXD6	20	40	70	100k	39.10	21.75	12.14	
WC2040B1T5R	WC2040B1T5RJ	WC2040B1T5RJB	150	HFXD6	20	40	80	100k	39.10	21.75	12.14	
WC2040B1T6R	WC2040B1T6RJ	WC2040B1T6RJB	150	HFXD6	20	40	90	100k	39.10	21.75	12.14	
WC2040B1T7R	WC2040B1T7RJ	WC2040B1T7RJB	150	HFXD6	20	40	100	100k	39.10	21.75	12.14	
WC2040B1T8R	WC2040B1T8RJ	WC2040B1T8RJB	150	HFXD6	20	40	110	100k	39.10	21.75	12.14	
WC2040B1T9R	WC2040B1T9RJ	WC2040B1T9RJB	125	HFXD6	20	40	125	100k	39.10	21.75	12.14	

Residential 5-Jaw Ringless Type Meter-Loadcenter Stacks: 3-Phase, 4-wire SN, Thru Bus and 1-Phase, 3-wire, SN, Distribution & Subfeed

Catalog Number		Main Breaker-Distribution ^②		Distribution		Subfeed Breaker (Type HED4) ^②	Max. AIC	Dimensions ^①			Phasing ^③	Knockout Diagram
No bypass	Horn Bypass	Amp.	Type	Spaces	Circuits	Amperage		Height	Width	Depth		
WC2040B2T1RJ	WC2040B2T1RJB	225	HFXD6	20	40	N/A	100k	39.10	16.22	12.14	AC	WC-1
WC2040B2T2RJ	WC2040B2T2RJB	200	HFXD6	20	40	50	100k	39.10	21.75	12.14	AC	WC-2
WC2040B2T3RJ	WC2040B2T3RJB	175	HFXD6	20	40	60	100k	39.10	21.75	12.14	AC	
WC2040B2T4RJ	WC2040B2T4RJB	175	HFXD6	20	40	70	100k	39.10	21.75	12.14	AC	
WC2040B2T5RJ	WC2040B2T5RJB	150	HFXD6	20	40	80	100k	39.10	21.75	12.14	AC	
WC2040B2T6RJ	WC2040B2T6RJB	150	HFXD6	20	40	90	100k	39.10	21.75	12.14	AC	
WC2040B2T7RJ	WC2040B2T7RJB	150	HFXD6	20	40	100	100k	39.10	21.75	12.14	AC	
WC2040B2T8RJ	WC2040B2T8RJB	150	HFXD6	20	40	110	100k	39.10	21.75	12.14	AC	
WC2040B2T9RJ	WC2040B2T9RJB	125	HFXD6	20	40	125	100k	39.10	21.75	12.14	AC	

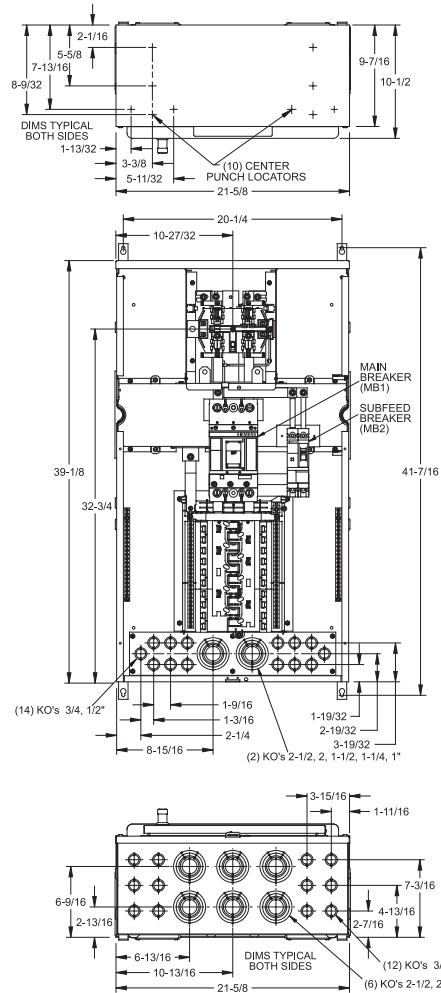
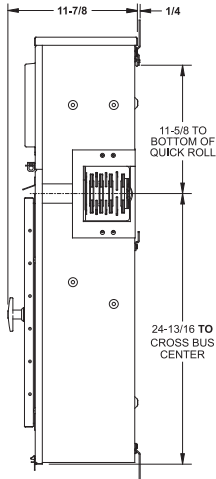
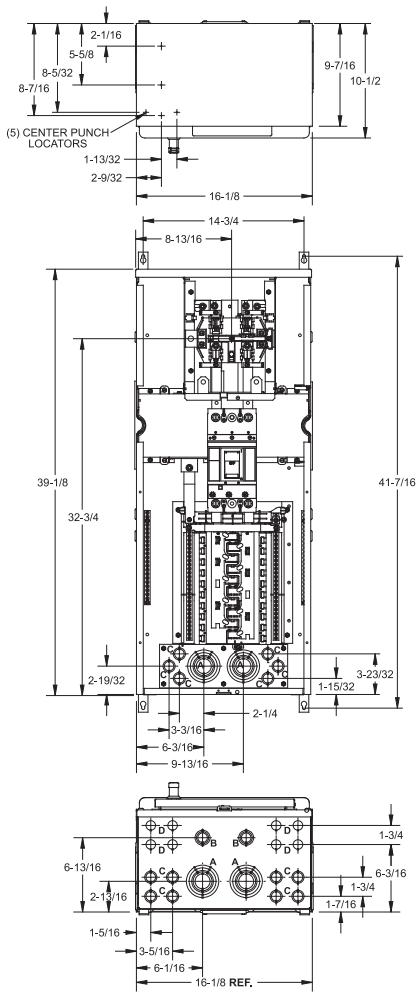
① Dimensions shown are representative of outside box dimensions and do not include allowances for mounting bumps, endwalls, covers, hubs, or hardware protrusions. Dimensions are subject to change.

② Breakers are factory installed.
③ Can be re-phased in the field.

Multi-family Metering—WC

Power Mod

Type WC House Power Module: Knockout Diagrams



WC-1	
WC2040B1T1	WC2040B2T1J
WC2040B1T1R	WC2040B2T1RJ
WC2040B1T1RJ	WC2040B2T1RJB
WC2040B1T1RJB	

KO Chart		
DESIGNATION	KO SIZE	QTY
A	2-1/2, 2, 1-1/2, 1-1/4, 1"	4
B	1, 3/4, 1/2"	2
C	3/4, 1/2"	14
D	1/2"	8

WC-2		
WC2040B1T2	WC2040B1T2RJ	WC2040B2T2J
WC2040B1T2R	WC2040B1T2RJB	WC2040B2T2RJ
WC2040B1T3	WC2040B1T3RJ	WC2040B2T3RJ
WC2040B1T3R	WC2040B1T3RJB	WC2040B2T3J
WC2040B1T4	WC2040B1T4RJ	WC2040B2T3RJ
WC2040B1T4R	WC2040B1T4RJB	WC2040B2T3RJB
WC2040B1T5	WC2040B1T5RJ	WC2040B2T4J
WC2040B1T5R	WC2040B1T5RJB	WC2040B2T4RJ
WC2040B1T6	WC2040B1T6RJ	WC2040B2T4RJB
WC2040B1T6R	WC2040B1T6RJB	WC2040B2T5J
WC2040B1T7	WC2040B1T7RJ	WC2040B2T5RJ
WC2040B1T7R	WC2040B1T7RJB	WC2040B2T5RJB
WC2040B1T8	WC2040B1T8RJ	WC2040B2T6J
WC2040B1T8R	WC2040B1T8RJB	WC2040B2T6RJ
WC2040B1T9	WC2040B1T9RJ	WC2040B2T6RJB
WC2040B1T9R	WC2040B1T9RJB	WC2040B2T7J
		WC2040B2T7RJ
		WC2040B2T7RJB
		WC2040B2T8J
		WC2040B2T8RJ
		WC2040B2T8RJB
		WC2040B2T9J
		WC2040B2T9RJ
		WC2040B2T9RJB

2
METER
CENTERS

Multi-family
Metering—WC

Power Mod

Type WCL Lever Bypass House Power Module

WCL Series House Power Module

Power Mod's patented WCL (lever bypass) family of house power modules offers the ability to combine power distribution to branch circuits within a module that is connected directly to the thru bus. This reduces wall space needed, decreases labor and material cost (for installing a separate panel), and simplifies the electrical distribution system.

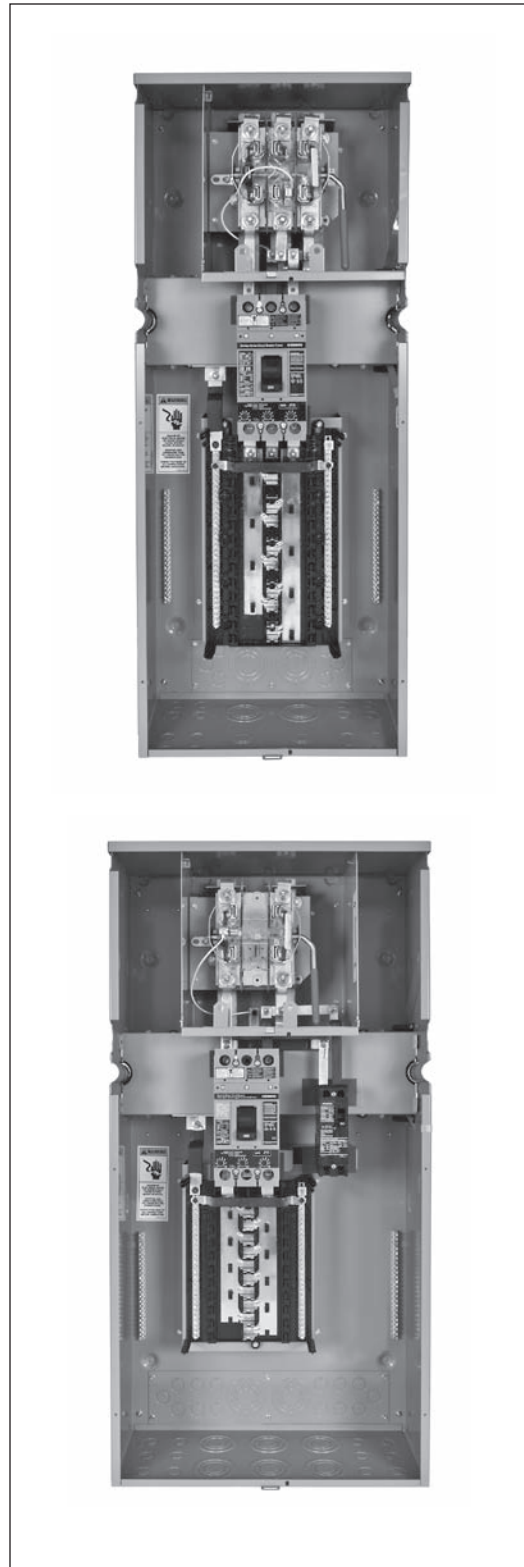
Key Features of the WCL family are:

- Talon HQ Lever Bypass ringless meter socket
- Phasing:
 - Single phase thru bus with single phase HQ socket and 20 space 40 circuit PL Series copper interior
 - Three phase thru bus with single phase HQ socket (phased AC) and 20 space 40 circuit PL Series copper interior
 - Three phase thru bus with three phase HQ socket and 24 space 42 circuit PL Series copper interior
- 100K AIC
- Available subfeed breaker which can be used for large remote loads (such as elevators) or alternative energy inputs (solar)
- Removable knock out plate
- Load wires can exit out of the top, back, or bottom

The line of WCL house power modules allow for un-precedented flexibility and savings. All of this while featuring the industry-leading QuickSystem that allows for the fastest install time.

Lever Bypass Series House Power Module quick reference

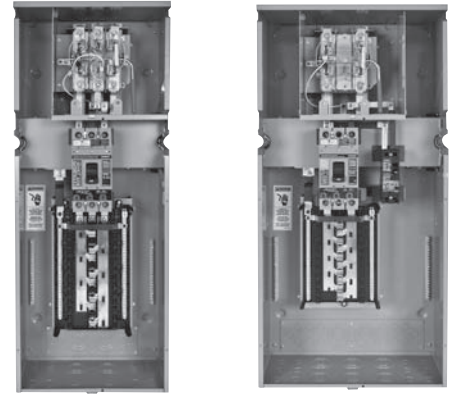
- Talon HQ Lever Bypass Meter Socket
- 1 Position, Single Phase Meter Socket
- 250amp maximum rating per device. Load center interior limited to 225 Amps max.1200A thru-bus rating
- UL Standard # UL67
- UL file # E27100
- AIC rating 100K
- Voltage
 - Single phase 120/240V AC max
 - Three phase
 - 120/208V AC max.
 - 240/120V AC max.
- All swing latches and rivets are stainless steel.
- Outdoor= NEMA 3R rated
- Interiors: 20 space/40 circuit single phase or 24 space 42 circuit three phase PL Series copper bus
- G90 Galvanized Steel
- ANSI 61 Paint
- Optional subfeed or alternative energy input (solar) up to 125amps.
- Custom options available! Details on page 2-141.



Type WCL Lever Bypass House Power Module

Main Features:

- Talon HQ Lever Bypass Meter Socket
- 1 Position, Single Phase Meter Socket
- 250amp maximum rating per device. Load center interior limited to 225 Amps max.
- 1200A thru-bus rating



Residential 4 or 5-Jaw Ringless Type Meter-Loadcenter Stacks: 1-Phase, 3-wire, SN, Thru Bus, Distribution, & Subfeed

Catalog Number	Main Breaker-Distribution ^②		Distribution		Subfeed Breaker (Type HED4) ^②	Max. AIC	Dimensions ^①			Knockout Diagram
	Amperage	Type	Spaces	Circuits			Amperage	Height	Width	
WCL2040B1T1RJ	225	HFXD6	20	40	N/A	100k	44.63	17.93	12.14	WCL-1
WCL2040B1T2RJ	200	HFXD6	20	40	50	100k	44.63	22.35	12.14	WCL-2
WCL2040B1T3RJ	175	HFXD6	20	40	60	100k	44.63	22.35	12.14	
WCL2040B1T4RJ	175	HFXD6	20	40	70	100k	44.63	22.35	12.14	
WCL2040B1T5RJ	150	HFXD6	20	40	80	100k	44.63	22.35	12.14	
WCL2040B1T6RJ	150	HFXD6	20	40	90	100k	44.63	22.35	12.14	
WCL2040B1T7RJ	150	HFXD6	20	40	100	100k	44.63	22.35	12.14	
WCL2040B1T8RJ	150	HFXD6	20	40	110	100k	44.63	22.35	12.14	
WCL2040B1T9RJ	125	HFXD6	20	40	125	100k	44.63	22.35	12.14	

Commercial 5-Jaw Ringless Type-Lever Bypass Meter-Loadcenter Stacks: 3-Phase, 4-wire SN, Thru Bus and 1-Phase, 3-wire, SN, Distribution & Subfeed

Catalog Number	Main Breaker-Distribution ^②		Distribution		Subfeed Breaker (Type HED4) ^②	Max. AIC	Dimensions ^①			Phasing ^③	Knockout Diagram
	Amperage	Type	Spaces	Circuits			Amperage	Height	Width		
WCL2040B2T1RJ	225	HFXD6	20	40	N/A	100k	44.63	17.93	12.14	AC	WCL-1
WCL2040B2T2RJ	200	HFXD6	20	40	50	100k	44.63	22.35	12.14	AC	WCL-2
WCL2040B2T3RJ	175	HFXD6	20	40	60	100k	44.63	22.35	12.14	AC	
WCL2040B2T4RJ	175	HFXD6	20	40	70	100k	44.63	22.35	12.14	AC	
WCL2040B2T5RJ	150	HFXD6	20	40	80	100k	44.63	22.35	12.14	AC	
WCL2040B2T6RJ	150	HFXD6	20	40	90	100k	44.63	22.35	12.14	AC	
WCL2040B2T7RJ	150	HFXD6	20	40	100	100k	44.63	22.35	12.14	AC	
WCL2040B2T8RJ	150	HFXD6	20	40	110	100k	44.63	22.35	12.14	AC	
WCL2040B2T9RJ	125	HFXD6	20	40	125	100k	44.63	22.35	12.14	AC	

Commercial 7-Jaw Ringless Type-Lever Bypass Meter-Loadcenter Stacks: 3-Phase, 4-wire SN, Thru Bus, Distribution & Subfeed

Catalog Number	Main Breaker-Distribution ^②		Distribution		Subfeed Breaker (Type HED4) ^②	Max. AIC	Dimensions ^①			Phasing ^③	Knockout Diagram
	Amperage	Type	Spaces	Circuits			Amperage	Height	Width		
WCL2442B3T1RJ	225	HFXD6	24	42	N/A	100k	44.63	17.93	12.14	AC	WCL-1
WCL2442B3T2RJ	200	HFXD6	24	42	50	100k	44.63	22.35	12.14	AC	WCL-2
WCL2442B3T3RJ	175	HFXD6	24	42	60	100k	44.63	22.35	12.14	AC	
WCL2442B3T4RJ	175	HFXD6	24	42	70	100k	44.63	22.35	12.14	AC	
WCL2442B3T5RJ	150	HFXD6	24	42	80	100k	44.63	22.35	12.14	AC	
WCL2442B3T6RJ	150	HFXD6	24	42	90	100k	44.63	22.35	12.14	AC	
WCL2442B3T7RJ	150	HFXD6	24	42	100	100k	44.63	22.35	12.14	AC	
WCL2442B3T8RJ	150	HFXD6	24	42	110	100k	44.63	22.35	12.14	AC	
WCL2442B3T9RJ	125	HFXD6	24	42	125	100k	44.63	22.35	12.14	AC	

① Dimensions shown are representative of outside box dimensions and do not include allowances for mounting

bumps, endwalls, covers, hubs, or hardware protrusions. Dimensions are subject to change.

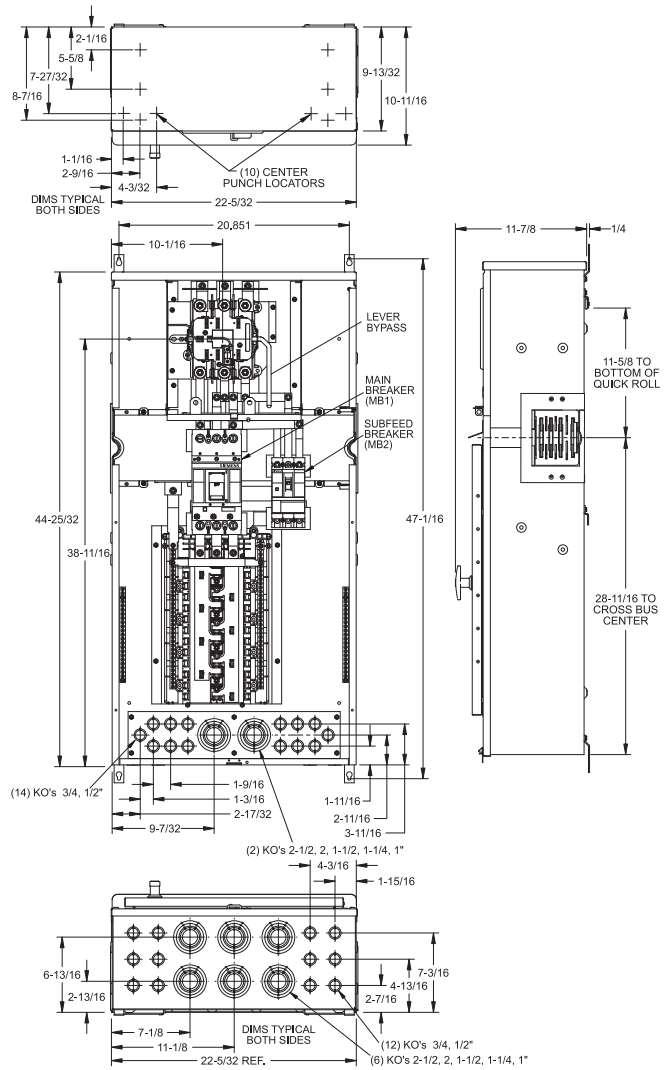
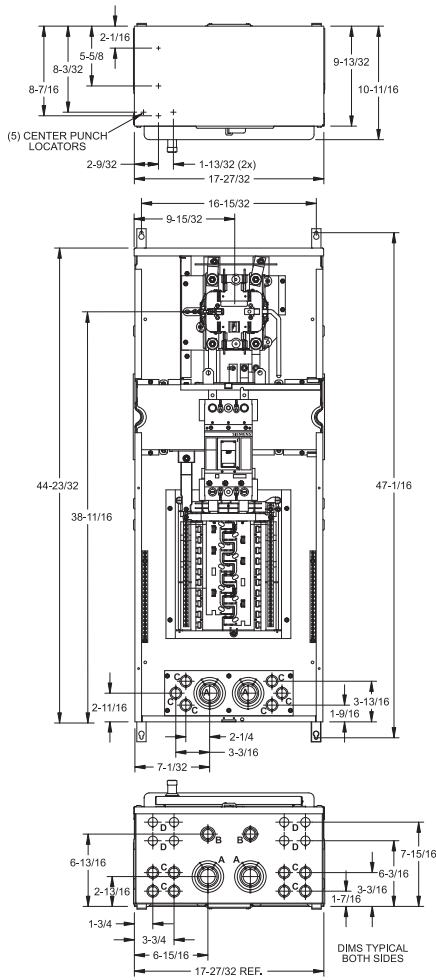
② Breakers are factory installed.
③ Cannot be re-phased in the field.

Power Mod

Type WCL Lever Bypass House Power Module: Knockout Diagrams

METER CENTERS 2

Multi-family Metering—WCL



WCL-1

WCL2040B1T1RJ
WCL2040B2T1RJ
WCL2040B3T1RJ

Knockout Chart

DESIGNATION	KO SIZE	QTY
A	2-1/2, 2, 1-1/2, 1-1/4, 1"	4
B	1, 3/4, 1/2"	2
C	3/4, 1/2"	14
D	1/2"	8

WCL-2

WCL2040B1T2RJ	WCL2040B2T2RJ	WCL2040B3T2RJ
WCL2040B1T3RJ	WCL2040B2T3RJ	WCL2040B3T3RJ
WCL2040B1T4RJ	WCL2040B2T4RJ	WCL2040B3T4RJ
WCL2040B1T5RJ	WCL2040B2T5RJ	WCL2040B3T5RJ
WCL2040B1T6RJ	WCL2040B2T6RJ	WCL2040B3T6RJ
WCL2040B1T7RJ	WCL2040B2T7RJ	WCL2040B3T7RJ
WCL2040B1T8RJ	WCL2040B2T8RJ	WCL2040B3T8RJ
WCL2040B1T9RJ	WCL2040B2T9RJ	WCL2040B3T9RJ

Power Mod

Type WCT Test Block Bypass House Power Module

WCT Series House Power Module

Power Mod's patented WCT (test-block bypass) family of house power modules offers the ability to combine power distribution to branch circuits within a module that is connected directly to the thru bus. This reduces wall space needed, decreases labor and material cost (for installing a separate panel), and simplifies the electrical distribution system.

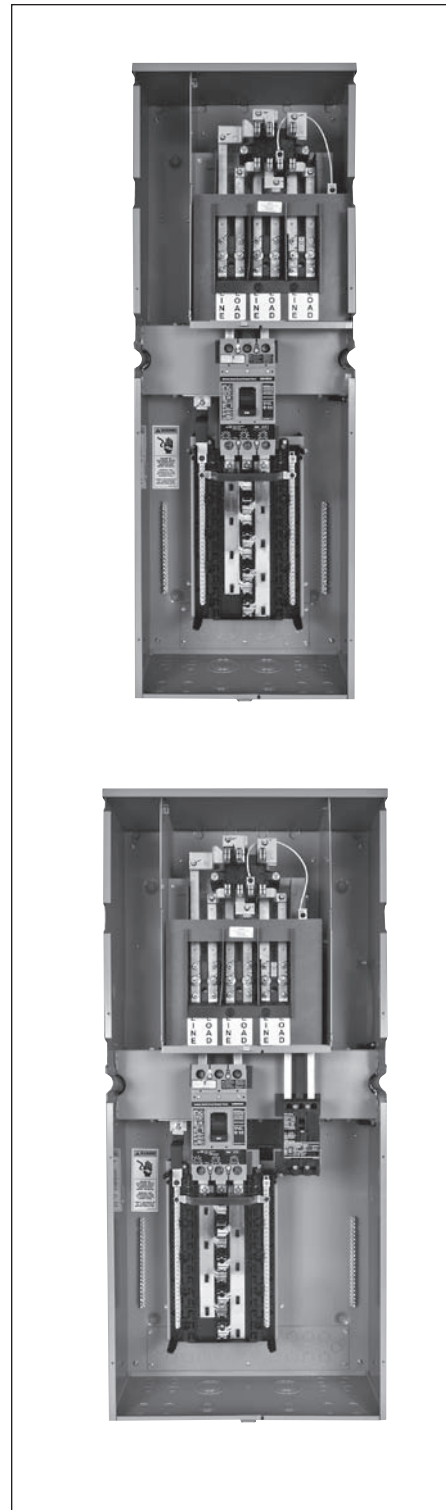
Key Features of the WCT family are:

- Siemens SMM Switchboard ring-style meter socket
- Phasing:
 - Single phase thru bus with a single phase meter socket and 20 space 40 circuit PL Series copper interior
 - Three phase thru bus with a single phase meter socket (phased AC) and 20 space 40 circuit PL Series copper interior
 - Three phase thru bus with three phase meter socket and 24 space 42 circuit PL Series copper interior
- 100K AIC
- Available subfeed breaker which can be used for large remote loads (such as elevators) or alternative energy inputs (solar)
- Removable knock out plate
- Load wires can exit out of the top, back, or bottom

The line of WCT house power modules allow for un-precedented flexibility and savings. All of this while featuring the industry-leading QuickSystem that allows for the fastest install time.

Test Block Bypass Series House Power Module Quick Reference

- Siemens SMM Switchboard ring-style
- 1 position, Single Phase Meter Socket
- 250amp, maximum rating per device
- Load Center interior limited to 225amp max.
- 1200amp thru-bus rating
- UL standard #'s UL 67
- UL file # E270100
- AIC rating 100K
- Voltage
 - 1 phase 120/240V AC max
 - 3 phase 120/208V AC max
 - 3 phase 240/120V AC max
- All swing latches and rivets are stainless steel
- Outdoor= NEMA 3R rated
- Interiors:
 - 20 spaces/40 circuits single phase
 - 24 spaces/42 circuits 3 phase PL Series copper bus
- G90 galvanized steel
- ANSI 61 paint
- Optional subfeed or alternative energy input (solar) up to 125amps
- EUSERC drawing #'s 312 & 353
- Custom options available! Details on page 2-141.



Power Mod

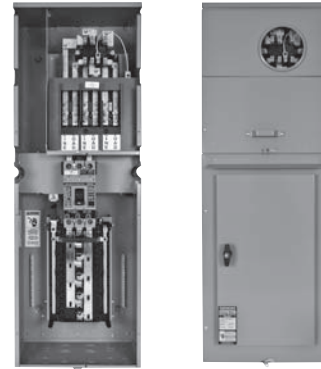
• Revised •
02/18/14

Type WCT Test Block Bypass House Power Module

METER CENTERS
2

Main Features:

- Siemens SMM Switchboard ring-style
- 1 Position, Single Phase Meter Socket
- 250amp maximum rating per device. Load center interior limited to 225amps max.
- 1200 Amp thru-bus rating.



Commercial 4-Jaw Ring Type-Test Block Bypass Meter-Loadcenter Stacks: 1-Phase, 3-wire, SN, Thru Bus, Distribution, & Subfeed

Catalog Number	Main Breaker-Distribution ^②		Distribution		Subfeed Breaker (Type HED4) ^②	Max. AIC	Dimensions ^①			Knockout Diagram
	Amperage	Type	Spaces	Circuits	Amperage		Height	Width	Depth	
WCT2040B1T1	225	HFXD6	20	40	N/A	100k	52.1	18.42	12.14	WCT-1
WCT2040B1T2	200	HFXD6	20	40	50	100k	52.1	18.42	12.14	WCT-2
WCT2040B1T3	175	HFXD6	20	40	60	100k	52.1	18.42	12.14	
WCT2040B1T4	175	HFXD6	20	40	70	100k	52.1	18.42	12.14	
WCT2040B1T5	150	HFXD6	20	40	80	100k	52.1	18.42	12.14	
WCT2040B1T6	150	HFXD6	20	40	90	100k	52.1	18.42	12.14	
WCT2040B1T7	150	HFXD6	20	40	100	100k	52.1	18.42	12.14	
WCT2040B1T8	150	HFXD6	20	40	110	100k	52.1	18.42	12.14	
WCT2040B1T9	125	HFXD6	20	40	125	100k	52.1	18.42	12.14	

Commercial 5-Jaw Ring Type-Test Block Bypass Meter-Loadcenter Stacks: 3-Phase, 4-wire SN, Thru Bus and 1-Phase, 3-wire, SN, Distribution & Subfeed

Catalog Number	Main Breaker-Distribution ^②		Distribution		Subfeed Breaker (Type HED4) ^②	Max. AIC	Dimensions ^①			Phasing ^③	Knockout Diagram
	Amperage	Type	Spaces	Circuits	Amperage		Height	Width	Depth		
WCT2040B2T1J	225	HFXD6	20	40	N/A	100k	52.1	18.42	12.14	AC	WCT-1
WCT2040B2T2J	200	HFXD6	20	40	50	100k	52.1	18.42	12.14	AC	WCT-2
WCT2040B2T3J	175	HFXD6	20	40	60	100k	52.1	18.42	12.14	AC	
WCT2040B2T4J	175	HFXD6	20	40	70	100k	52.1	18.42	12.14	AC	
WCT2040B2T5J	150	HFXD6	20	40	80	100k	52.1	18.42	12.14	AC	
WCT2040B2T6J	150	HFXD6	20	40	90	100k	52.1	18.42	12.14	AC	
WCT2040B2T7J	150	HFXD6	20	40	100	100k	52.1	18.42	12.14	AC	
WCT2040B2T8J	150	HFXD6	20	40	110	100k	52.1	18.42	12.14	AC	
WCT2040B2T9J	125	HFXD6	20	40	125	100k	52.1	18.42	12.14	AC	

Commercial 7-Jaw Ring Type-Test Block Bypass Meter-Loadcenter Stacks: 3-Phase, 4-wire SN, Thru Bus, Distribution & Subfeed

Catalog Number	Main Breaker-Distribution ^②		Distribution		Subfeed Breaker (Type HED4) ^②	Max. AIC	Dimensions ^①			Phasing ^③	Knockout Diagram
	Amperage	Type	Spaces	Circuits	Amperage		Height	Width	Depth		
WCT2442B3T1J	225	HFXD6	24	42	N/A	100k	52.1	18.42	12.14	AC	WCT-1
WCT2442B3T2J	200	HFXD6	24	42	50	100k	52.1	18.42	12.14	AC	WCT-2
WCT2442B3T3J	175	HFXD6	24	42	60	100k	52.1	18.42	12.14	AC	
WCT2442B3T4J	175	HFXD6	24	42	70	100k	52.1	18.42	12.14	AC	
WCT2442B3T5J	150	HFXD6	24	42	80	100k	52.1	18.42	12.14	AC	
WCT2442B3T6J	150	HFXD6	24	42	90	100k	52.1	18.42	12.14	AC	
WCT2442B3T7J	150	HFXD6	24	42	100	100k	52.1	18.42	12.14	AC	
WCT2442B3T8J	150	HFXD6	24	42	110	100k	52.1	18.42	12.14	AC	
WCT2442B3T9J	125	HFXD6	24	42	125	100k	52.1	18.42	12.14	AC	

① Dimensions shown are representative of outside box dimensions and do not include allowances for

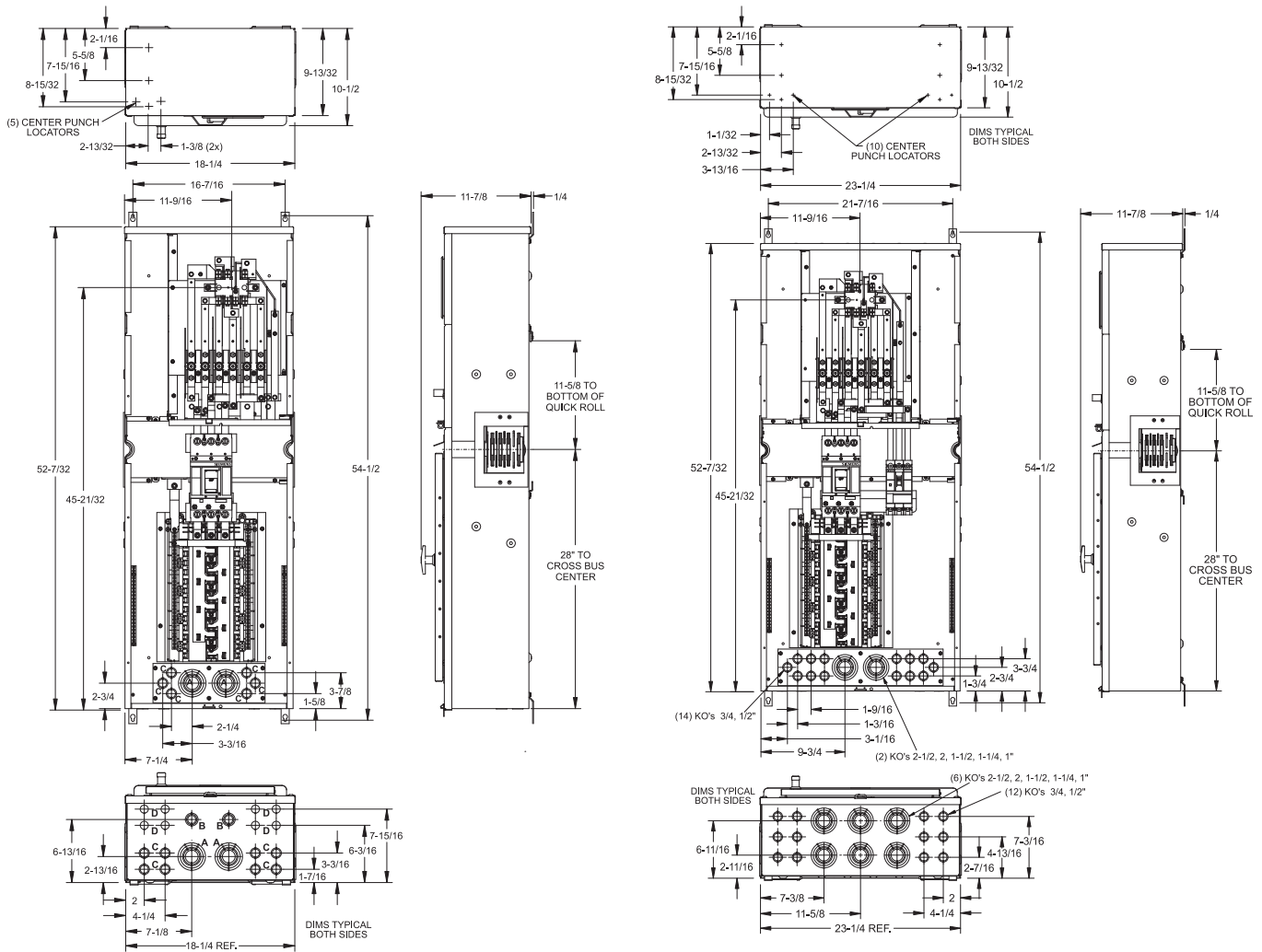
mounting bumps, endwalls, covers, hubs, or hardware protrusions. Dimensions are subject to change.

② Breakers are factory installed.
③ Cannot be re-phased in the field.

Power Mod

• Revised •
06/01/13

Type WCT Test Block Bypass House Power Module: Knockout Diagrams



WCT-1	
WCT2040B1T1	
WCT2040B2T1J	
WCT2040B3T1J	

Knockout Chart		
DESIGNATION	KO SIZE	QTY
A	2-1/2, 2, 1-1/2, 1-1/4, 1"	4
B	1, 3/4, 1/2"	2
C	3/4, 1/2"	14
D	1/2"	8

WCT-2		
WCT2040B1T2	WCT2040B2T2J	WCT2442B3T2J
WCT2040B1T3	WCT2040B2T3J	WCT2442B3T3J
WCT2040B1T4	WCT2040B2T4J	WCT2442B3T4J
WCT2040B1T5	WCT2040B2T5J	WCT2442B3T5J
WCT2040B1T6	WCT2040B2T6J	WCT2442B3T6J
WCT2040B1T7	WCT2040B2T7J	WCT2442B3T7J
WCT2040B1T8	WCT2040B2T8J	WCT2442B3T8J
WCT2040B1T9	WCT2040B2T9J	WCT2442B3T9J

2
METER
CENTERS

Multi-family
Metering—WCT

Power Mod

Type WSPD Surge Protection Modules

WSPD Surge Protection Modules

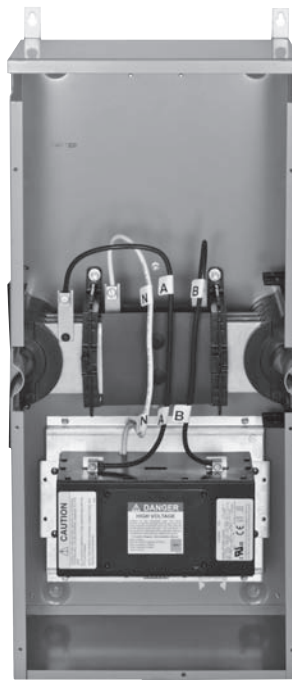
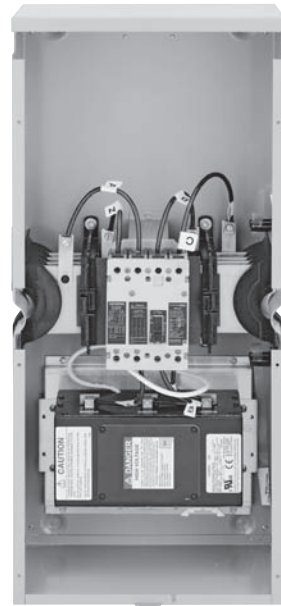
Surge protection modules for Power Mod (type WSPD) are thru-bus connected modules that allow the user to view surge status as well as access the SPD control panel without breaking the utility seal on the enclosure. An optional breaker disconnect is available to enable the end user to replace the SPD (surge protection device) without having to disconnect utility power to the Power Mod installation.

Features include:

- QuickSystem™ features
- 100, 200, 300, 400, 500kA ratings available
- External, vandal resistant & lockable clear cover over SPD control panel
- Single phase thru bus and three phase thru bus
- Optional breaker disconnect that opens phase & neutral to make SPD replacement quick and easy

Surge Protection Module quick reference

- 100-500 kA rating
- 1200amp thru-bus rating
- UL standard #67
- UL file # E27100
- AIC rating: 100K
- Voltage
 - Single phase 120/240V AC max
 - Three phase 240V AC max
- All swing latches and rivets are stainless steel
- NEMA 3R rated
- ANSI 61 paint
- Custom options available! Details on page 2-141.



Power Mod

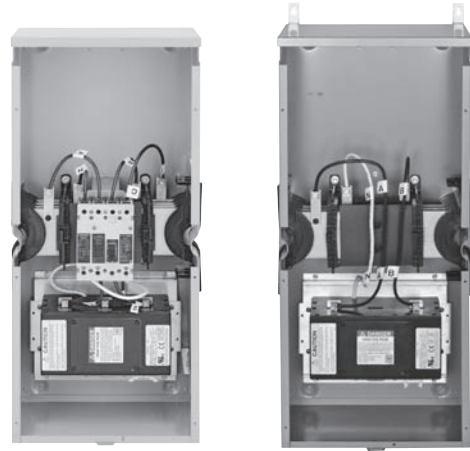
• Revised •
02/18/14

Type WSPD Surge Protection Modules

Main Features:

- 100-500kA ratings
- 1200 amp thru-bus
- Suitable for 100k AIC applications

Lugs not required.
Quick Connect sold separately.



2
METER
CENTERS

1-phase, 3-wire SN, 120/240V AC

Catalog Number (with HEG Breaker Disconnect)	Catalog Number (no disconnect)	Breaker Type	kA Surge Current ^②	Dimensions (inches) ^①			Knockout Diagram
				Height	Width	Depth	
WSPD1B10A	WSPD1N10A	HEG	100	29.19	13.38	7.91	WSPD-B = Breaker WSPD-N = No breaker
WSPD1B20A	WSPD1N20A	HEG	200	29.19	13.38	7.91	
WSPD1B30A	WSPD1N30A	HEG	300	29.19	13.38	7.91	
WSPD1B40A	WSPD1N40A	HEG	400	29.19	13.38	7.91	
WSPD1B50A	WSPD1N50A	HEG	500	29.19	13.38	7.91	

3-phase, 4-wire SN, Delta 240/120V AC

Catalog Number (with HEG Breaker Disconnect)	Catalog Number (no disconnect)	Breaker Type	kA Surge Current ^②	Dimensions (inches) ^①			Knockout Diagram
				Height	Width	Depth	
WSPD3B10B	WSPD3N10B	HEG	100	29.19	13.38	7.91	WSPD-B = Breaker WSPD-N = No breaker
WSPD3B20B	WSPD3N20B	HEG	200	29.19	13.38	7.91	
WSPD3B30B	WSPD3N30B	HEG	300	29.19	13.38	7.91	
WSPD3B40B	WSPD3N40B	HEG	400	29.19	13.38	7.91	
WSPD3B50B	WSPD3N50B	HEG	500	29.19	13.38	7.91	

3-phase, 4-wire SN, Wye 208/120V AC

Catalog Number (with HEG Breaker Disconnect)	Catalog Number (no disconnect)	Breaker Type	kA Surge Current ^②	Dimensions (inches) ^①			Knockout Diagram
				Height	Width	Depth	
WSPD3B10C	WSPD3N10C	HEG	100	29.19	13.38	7.91	WSPD-B = Breaker WSPD-N = No breaker
WSPD3B20C	WSPD3N20C	HEG	200	29.19	13.38	7.91	
WSPD3B30C	WSPD3N30C	HEG	300	29.19	13.38	7.91	
WSPD3B40C	WSPD3N40C	HEG	400	29.19	13.38	7.91	
WSPD3B50C	WSPD3N50C	HEG	500	29.19	13.38	7.91	

① Dimensions shown are representative of outside box dimensions and do not include allowances for mounting

bumps, endwalls, covers, hubs, or hardware protrusions. Dimensions are subject to change.

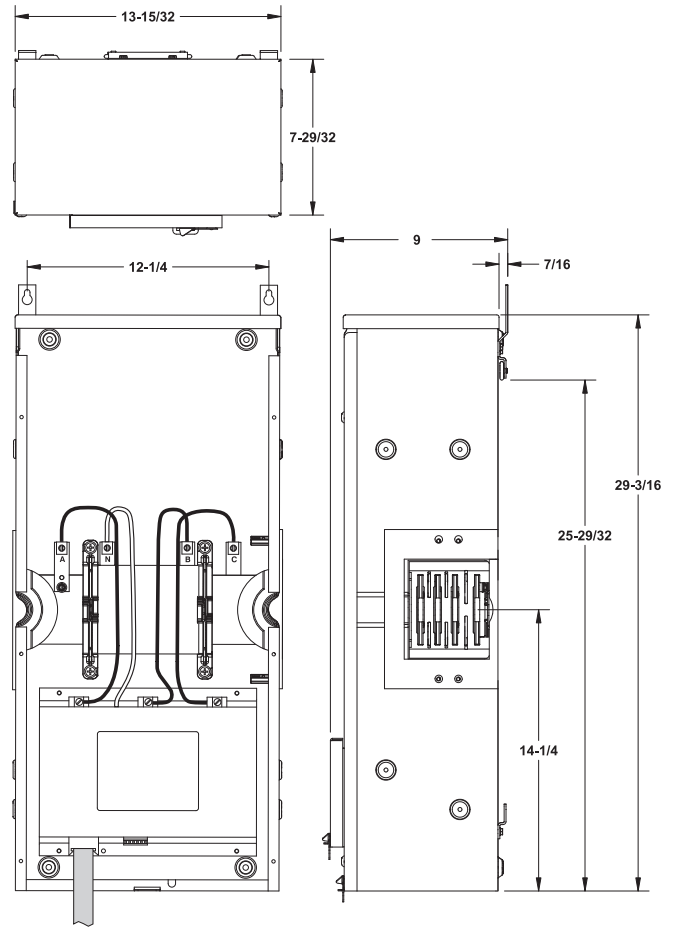
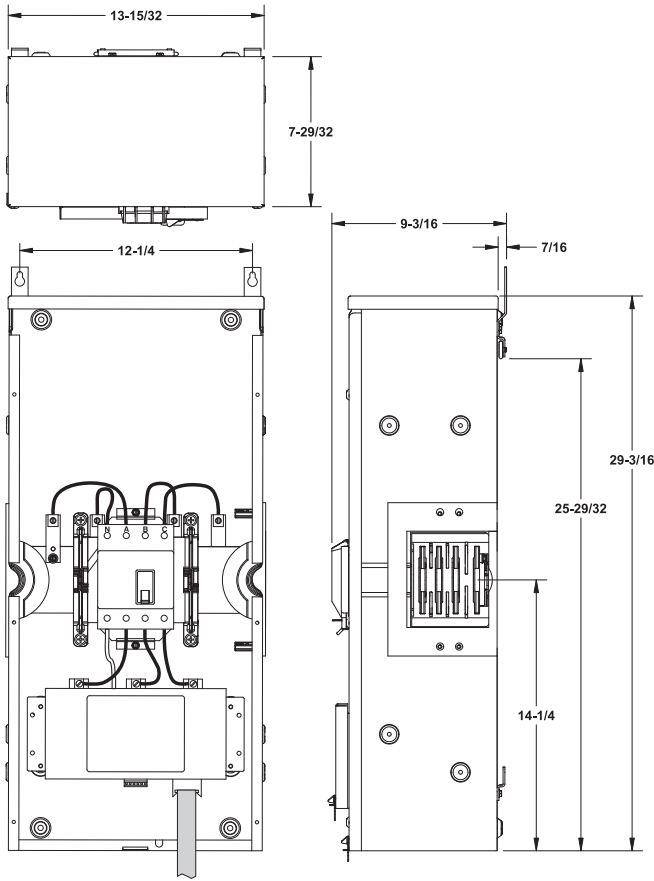
② 200 - 500kA devices require additional lead time. Please contact sales office for details on lead time.

Multi-family
Metering—WSPD

Power Mod

Type WSPD Surge Protection Modules: Knockout Diagrams

METER CENTERS
2



WSPD-B

WSPD1B10A	WSPD3B10B
WSPD1B20A	WSPD3B10C
WSPD1B30A	WSPD3B20B
WSPD1B40A	WSPD3B20C
WSPD1B50A	WSPD3B30B
	WSPD3B30C
	WSPD3B40B
	WSPD3B40C
	WSPD3B50B
	WSPD3B50C

With breaker disconnect

WSPD-N

WSPD1N10A	WSPD3N10B
WSPD1N20A	WSPD3N10C
WSPD1N30A	WSPD3N20B
WSPD1N40A	WSPD3N20C
WSPD1N50A	WSPD3N30B
	WSPD3N30C
	WSPD3N40B
	WSPD3N40C
	WSPD3N50B
	WSPD3N50C

No breaker disconnect

Power Mod

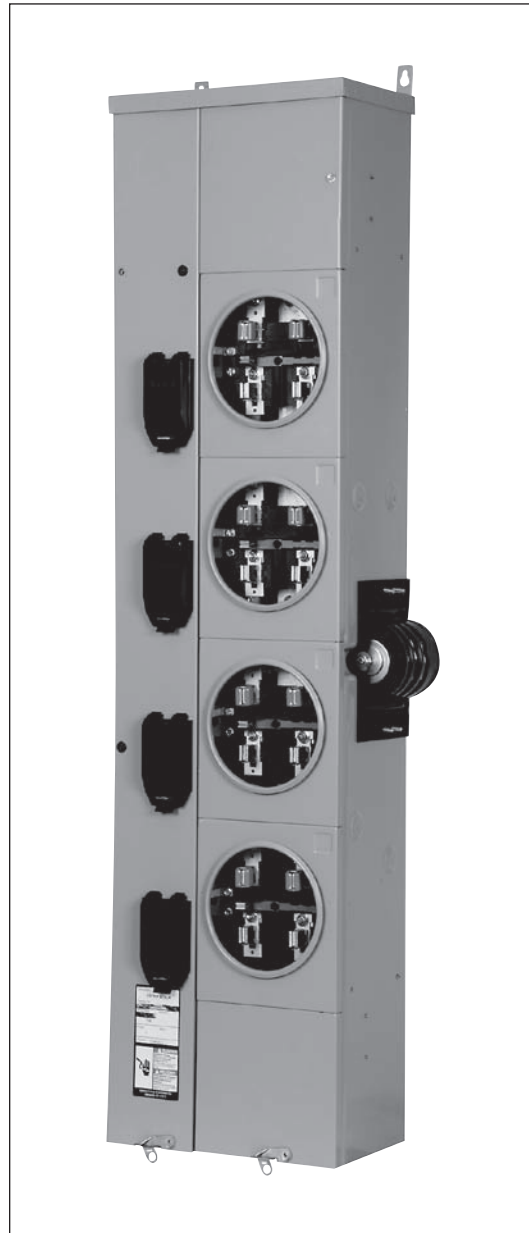
Type WMN ConEd Residential Meter Stacks

WMN ConEd Residential Meter Stacks

Siemens Consolidated Edison Residential Meter Stacks are packed with features inside and out; our exclusive knock out plate offers flexibility when pulling wires to the stack, moveable neutrals and grounds to save wire, and all of the QuickSystem features all designed with the contractor in mind.

Surge Protection Module quick reference

- 2-6 gang
- 125/225 Amp per position
- 1200Amp thru-bus rating
- UL standard 67
- UL file no. E27100
- AIC rating: (65k & 100K)
- Voltage
 - 3 phase in single phase out
 - 240V AC max
- All swing latches and rivets are stainless steel
- Outdoor = NEMA 3R rated
- Indoor = NEMA 1R rated
- G90 galvanized steel
- ANSI 61 paint



Power Mod

Type WMN ConEd Residential Meter Stacks

Main Features:

- 2-6 gang
- 1200 amp thru-bus
- Suitable for 65k & 100k AIC applications



Residential 5-jaw ring type meter stacks; 3-phase, 4-wire SN, incoming and 1-phase, 3 wire SN outgoing

Outdoor Catalog number	Indoor Catalog number	Meter positions per stack	Breaker provision	Maximum AIC	Dimensions (inches)			Knockout Diagram
					Height	Width	Depth	
Max. tenant breaker (Amps): 125								
WMN22125J	MN22125J	2	QP, QPH, HQP, MP-T, MP-HT, MPMT	65k	35.31	12.97	8.09	WMN-1
WMN32125J	MN32125J	3		65k	46.31	12.97	8.09	WMN-2
WMN42125J	MN42125J	4		65k	56.31	12.97	8.09	WMN-3
WMN52125J	MN52125J	5		65k	66.31	12.97	8.09	WMN-4
WMN62125J	MN62125J	6		65k	76.31	12.97	8.09	WMN-5
Max. tenant breaker (Amps): 225								
WMN22225J	MN22225J	2	QS, QSH, QSHH, HQS, HQSH, QP, QPH, HQP, MP-T, MP-HT, MPMT	100k	35.31	16.09	8.09	WMN-6
WMN32225J	MN32225J	3		100k	46.31	16.09	8.09	WMN-7
WMN42225J	MN42225J	4		100k	56.31	16.09	8.09	WMN-8
WMN52225J	MN52225J	5		100k	66.31	16.09	8.09	WMN-9
WMN62225J	MN62225J	6		100k	76.31	16.09	8.09	WMN-10

Ⓞ Dimensions shown are representative of outside box dimensions and do not include allowances for mounting bumps, endwalls, covers, hubs, or hardware protrusions. Dimensions are subject to change.

Ⓞ 225A available in lower three positions only. 200A continuous for all other positions.

Ⓞ Max AIC determined by maximum AIC of tenant breakers.

Ⓞ Must use QuickPhase features to route all sockets AWAY from high-leg when 240/120 Delta voltage is used.

Ⓞ Install QP breakers below QS.

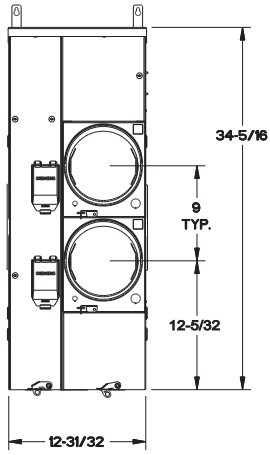
Power Mod

• Revised •
02/18/14

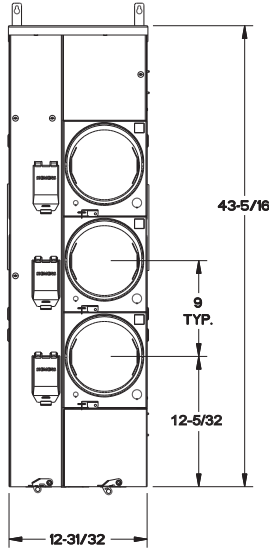
Type WMN ConEd Residential Meter Stacks: Knockout Diagrams

2
METER
CENTERS

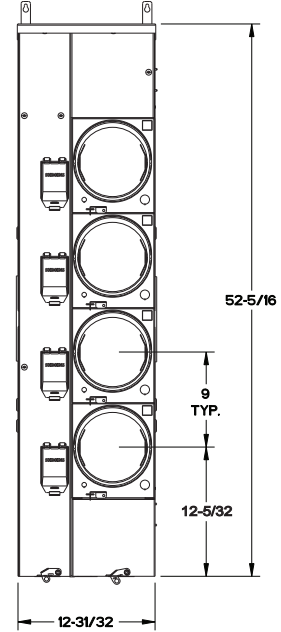
WMN-1
WMN22125J
MN22125J



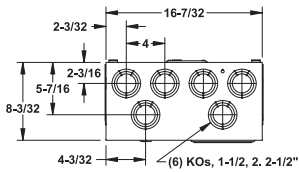
WMN-2
WMN32125J
MN32125J



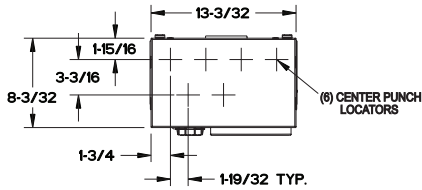
WMN-3
WMN42125J
MN42125J



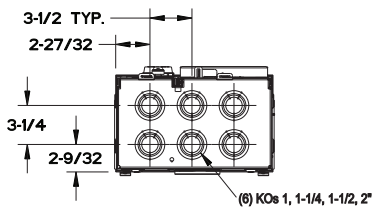
125 Amp Typical Top View for NEMA 1



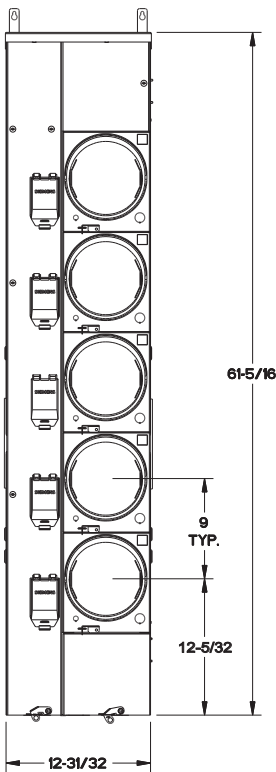
125 Amp Typical Top View



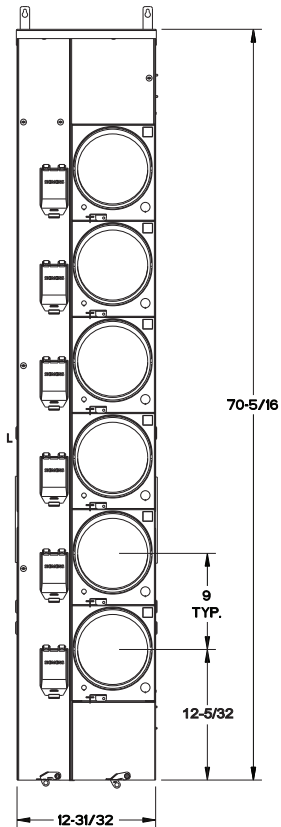
125 Amp Typical Bottom View



WMN-4
WMN52125J
MN52125J



WMN-5
WMN52125J
MN62125J



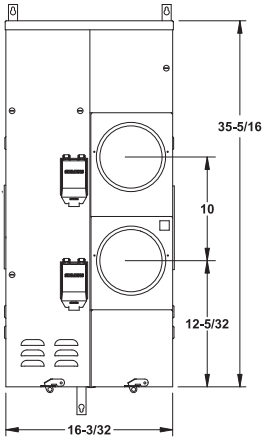
Multi-family
Metering—WMN

Power Mod

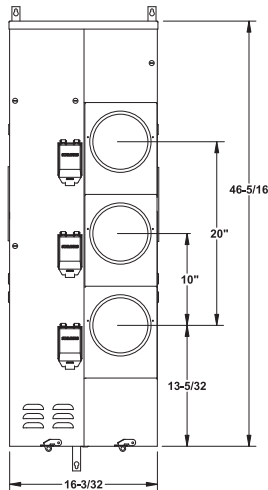
Type WMN ConEd Residential Meter Stacks: Knockout Diagrams

2
METER
CENTERS

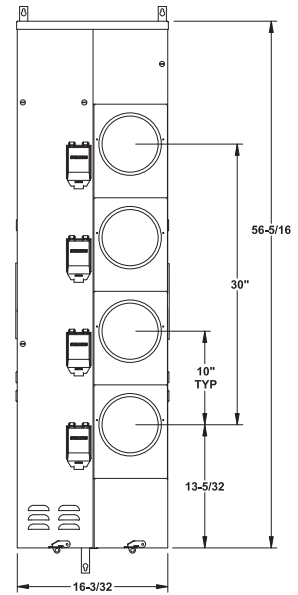
WMN-6
WMN22225J
MN22225J



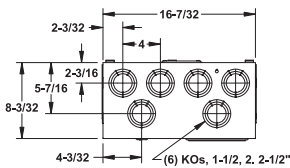
WMN-7
WMN32225J
MN32225J



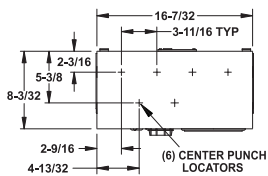
WMN-8
WMN42225J
MN42225J



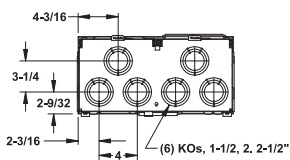
225 Amp Typical Top View for NEMA 1



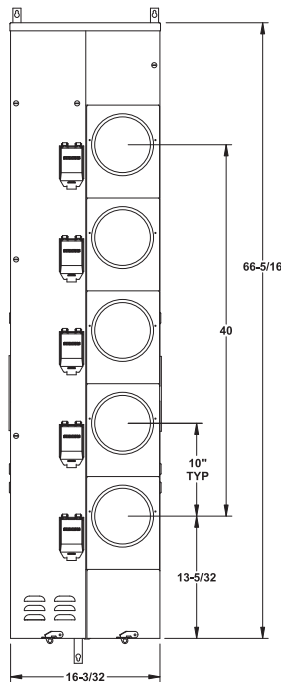
225 Amp Typical Top View



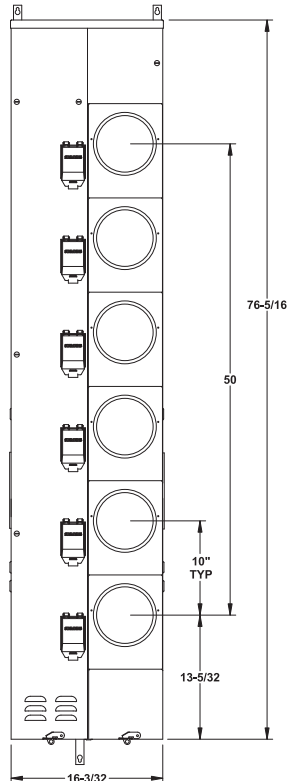
225 Amp Typical Bottom View



WMN-9
WMN52225J
MN52225J



WMN-10
WMN62225J
MN62225J



Type WTBN ConEd Tapboxes

ConEd Tap Boxes (type WTBN) are designed to meet the requirements of the Consolidated Edison Utility service area. WTBN tap boxes feature a shallow depth for front and rear alignment with WMN stacks.

ConEd Tapboxes

- 400-1200A
- 1200Amp thru-bus rating
- UL standard # UL67
- UL file no. E27100
- AIC rating: (100K AIC)
- Voltage
 - 3 phase in single phase out
 - 240V AC max
- All swing latches and rivets are stainless steel
- NEMA 3R rated
- G90 galvanized steel
- ANSI 61 paint



Power Mod

Type WTBN ConEd Tapboxes

Main Features:

- 400-1200A
- 1200 amp thru-bus
- Suitable for 100k AIC applications



Tap Box modules: 3-phase, 4 wire SN, 208/120V AC Max

Outdoor number (100k AC)	Ampere Rating	Service feed [®]	Dimensions (inches) ^①			Line Side Connections (Lugs)	Knockout Diagram
			Height	Width	Depth		
WTBN3400CU	400	OH/UG	35.31	12.97	8.09	1 Set Of 2 Studs	WTBN-1
WTBN3600CU	600	OH/UG	46.31	12.97	8.09	1 Set Of 2 Studs	WTBN-2
WTBN3800CU	800	OH/UG	56.31	12.97	8.09	2 Sets Of 2 Studs	WTBN-3
WTBN31200CU	1200	OH/UG	66.31	12.97	8.09	2 Sets Of 2 Studs	WTBN-4

① Dimensions shown are representative of outside box dimensions and do not include allowances for mounting

bumps, endwalls, covers, hubs, or hardware protrusions. Dimensions are subject to change.

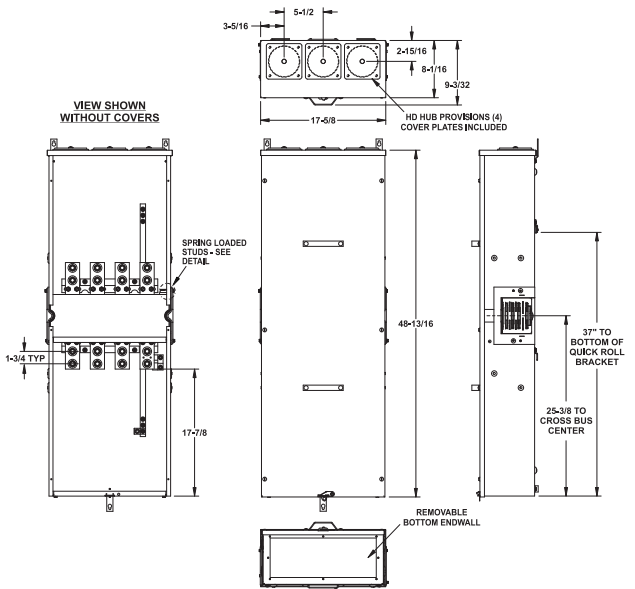
② Devices have studs on top and bottom, but only one side should be used.

Power Mod

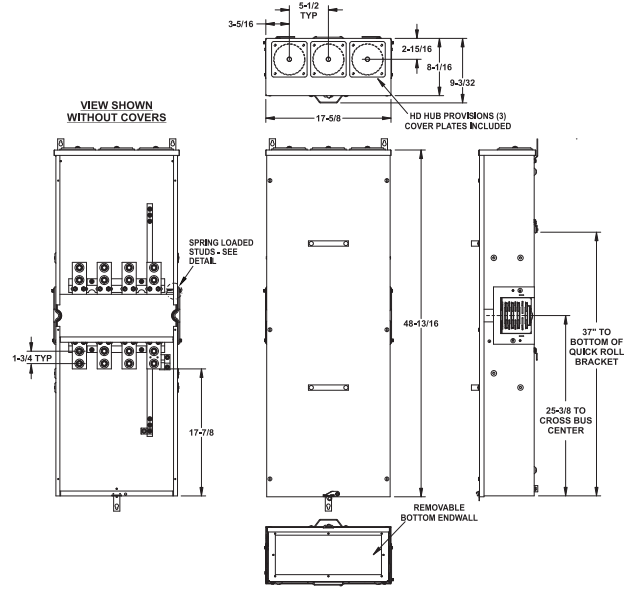
Type WTBN ConEd Tapboxes

• Revised •
02/18/14

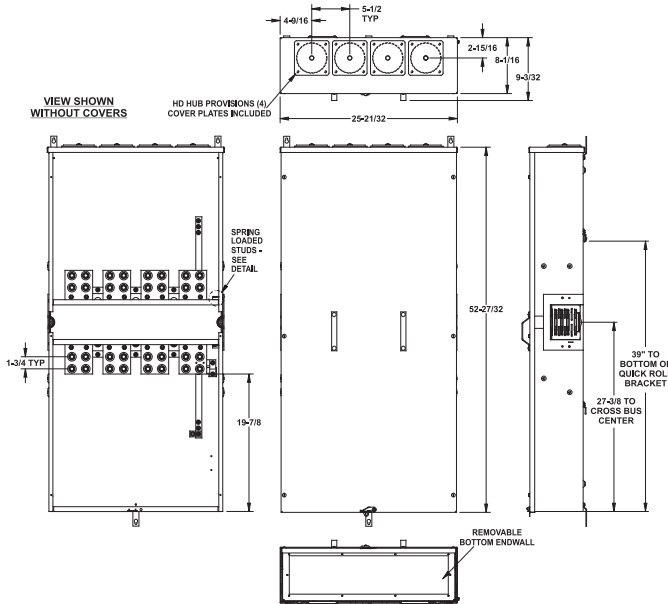
2
METER
CENTERS



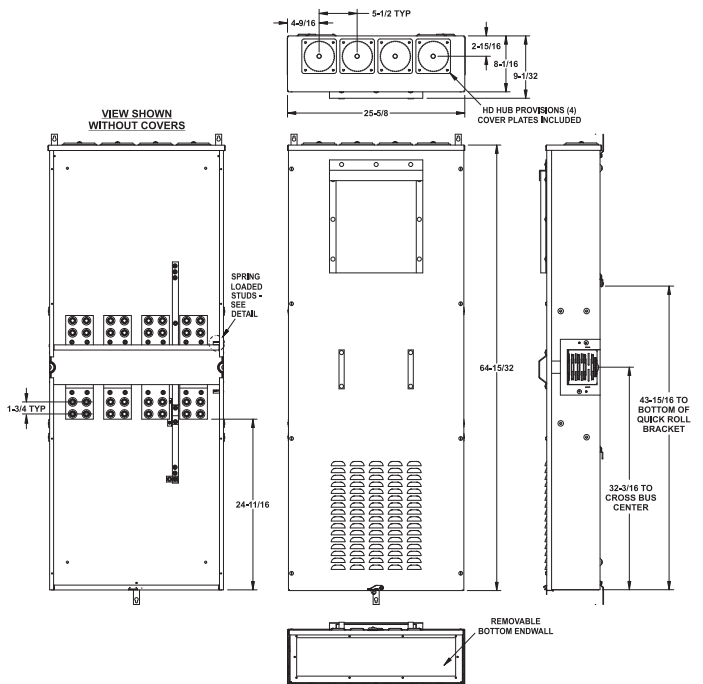
WTBN-1
WTBN3400CU



WTBN-2
WTBN3600CU



WTBN-3
WTBN3800CU



WTBN-4
WTBN31200CU

Multi-family
Metering—WTBN

Power Mod

• Revised •
06/01/13

WMMB Aux Pull Box & MS_UBD Switches

Main Features:

- EUSERC compliant incoming pull section
- Dual cover handles
- Single and three phase models



EUSERC compliant pullbox modules: 1-phase, 3-wire SN, incoming, 120/240V AC max. ^③

Catalog number	Ampere rating	Withstand rating ^②	Service feed	Dimensions (inches) ^①			KO drawing no.	Line terminal lugs no. and size per line and neutral	Knockout Diagrams
				Height	Width	Depth			
WMMB1400	400	65,000	UG	37.50	16.69	9.34	P-1	1 set of 2 studs	P-1
WMMB1800	800	65,000	UG	45.50	19.44	12.72	P-2	1 set of 2 studs	P-2
WMMB11200	1200	65,000	UG	47.50	25.94	12.72	P-3	3 sets of 2 studs	P-3

EUSERC compliant pullbox modules: 3-phase, 4-wire SN, incoming, 240V AC max. ^③

Catalog number	Ampere rating	Withstand rating ^②	Service feed	Dimensions (inches) ^①			KO drawing no.	Line terminal lugs no. and size per line and neutral	Knockout Diagrams
				Height	Width	Depth			
WMMB3400	400	65,000	UG	37.50	16.69	9.34	P-1	1 set of 2 studs	P-1
WMMB3800	800	65,000	UG	45.50	25.94	12.72	P-2	2 set of 2 studs	P-2
WMMB31200	1200	65,000	UG	47.50	33.83	12.72	P-3	3 sets of 2 studs	P-3

MS_UBD Bus Duct connected switch mains ^④

Catalog number	Ampere rating	Dimensions (Inches) ^①			Mechanism type	AIC rating	Knockout Diagrams
		Height	Width	Depth			
MS44UBD	400	33.00	15.00	14.94	Class T fuse	100,000	BD-1
MS64UBD	600	33.00	15.00	14.94			BD-2
MS84UBD	800	33.00	15.00	14.94			BD-3

^① Dimensions shown are representative of outside box dimensions and do not include allowances for mounting bumps, endwalls, covers, hubs, or hardware protrusions. Dimensions are subject to change.

^② Devices rated for 22,000. 65,000 rating requires cables to be tied together. Please see instructions with pullbox for details.

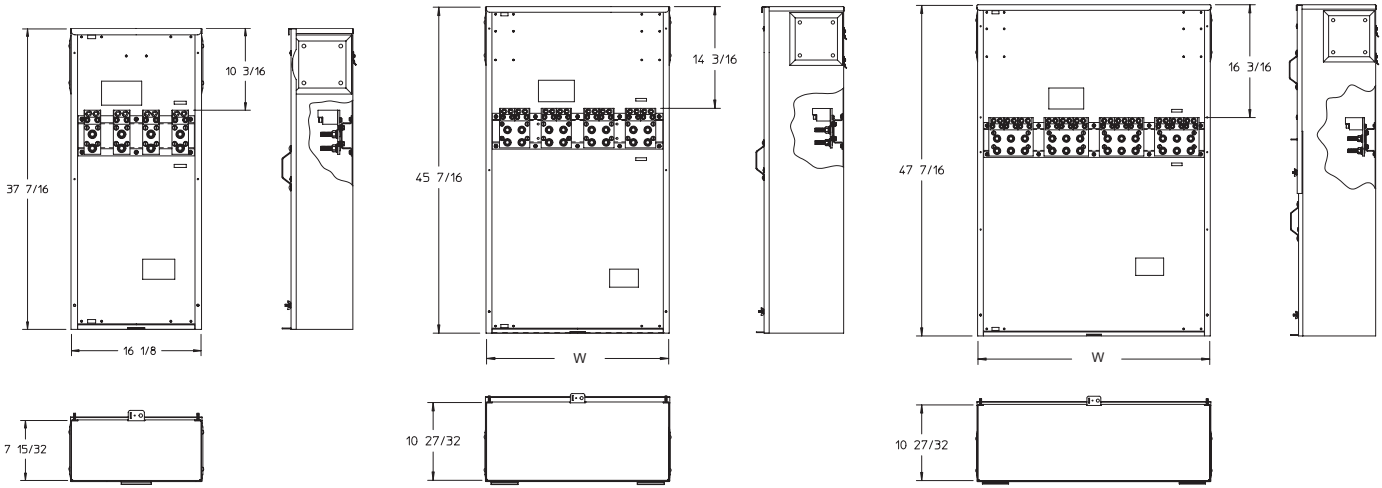
^③ Devices do not have thru bus.
^④ All devices are built to order. Tap stack and QuickConnect sold separately.

Power Mod

WMMB Aux Pull Box & MS_UBD Switches: Knockout Diagrams

• Revised •
 06/01/13

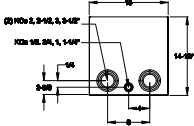
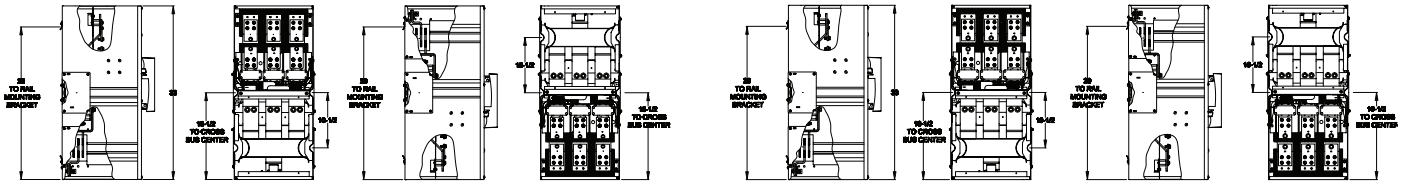
2
 METER
 CENTERS



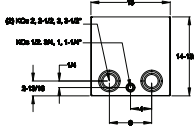
P-1
 WMMB1400
 WMMB3400

P-2	
	Width
WMMB1800	19.44
WMMB3800	25.94

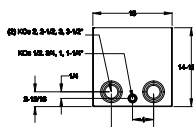
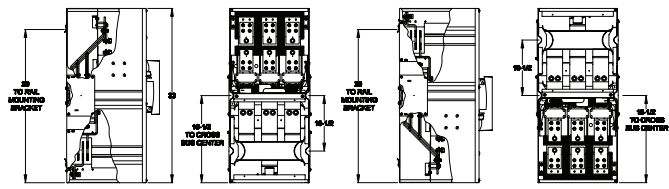
P-3	
	Width
WMMB11200	25.94
WMMB31200	33.83



BD-1
 MS44UBD



BD-2
 MS64UBD



BD-3
 MS84UBD

Multi-family
 Metering — WMMB