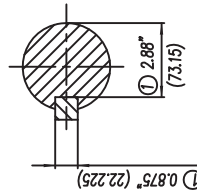


① Tolerancias acorde a NEMA Std.
 ② All these dimensions corresponding to assemblies and castings shall have a tolerance as per DIN standard 1686-G1B 19.
 ③ Not According to NEMA Std.



Keyseat detail
 Detalle Cuñero

Tol. in mm. acc. to Tol. en mm. según DIN-1686-G1B-19		European Projection/Proyeccion Europea		Date/Fecha		Name/Nombre		Scale/Escala	
Over/desde	To/hasta	18	± 4.5	16/01/09	J. Corvajal	Outline/Dimensiones			
---	---	30	± 4.7	16/01/09	J. Corvajal	GPI0			
18	18	50	± 5	16/01/09	J. Corvajal	Type/SD10, SD10 MS, SD100 mNP			
30	30	80	± 5.5	16/01/09	J. Corvajal	FRAME/ARM. 444/445T			
50	50	120	± 6	16/01/09	J. Corvajal	3MSE 750 0636			
80	80	180	± 6.5	16/01/09	J. Corvajal	Ref.			
120	120	250	± 7	16/01/09	J. Corvajal	Rep./			
180	180	315	± 7.5	16/01/09	J. Corvajal	Isob.			
250	250	400	± 8	16/01/09	J. Corvajal				
400	400	500	± 8.5	16/01/09	J. Corvajal				
500	500	630	± 9.5	16/01/09	J. Corvajal				
630	630	800	± 10	16/01/09	J. Corvajal				

CERTIFIED PRINT / CERTIFICACION			
FOR/DESDE	BY/POR	DATE/FECHA	SCALE/ESCALA
SIEMENS COMPANY	SIEMENS COMPANY	16/01/09	---
IP	PROYECTANTE	REVISOR	RE