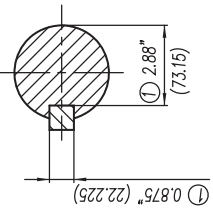


1/2"-13NC Tapped Hole for Grounding Both sides of Frame  
Barreno 1/2"-13NC para Tierra, en ambos lados de la Carcasa



**Keyseat detail**  
**Detalle Cuñero**

- ① Tolerancias acorde a NEMA Std.
- ② All these dimensions corresponding to assemblies and castings shall have a tolerance as per DIN standard 1686-GTB 19.
- ③ Not According to NEMA Std.

CERTIFIED PRINT / CERTIFICACION			
CUSTOMER/CLIENTE	SAW/PROY/CLIENTE		
IP	FRANK/ARK	TYPE/PRO	REV
		WOLFS	REZ

Tol. in mm. acc. to Tol. en mm. según DIN-1686-GTB-19	± 4.5
Over/desde To/hasta	± 4.7
18	± 5.0
30	± 5.5
50	± 6.0
80	± 6.5
120	± 7.0
180	± 7.5
250	± 8.0
315	± 8.5
400	± 9.0
500	± 9.5
630	± 10

European Projection / Proyeccion Europea

Dim. in inches / Dim. en pulg.

NOTE: Changed the type of motor  
NOTA: Se cambio el tipo de motor

Date/Fecha: 20/01/09  
Drawn/Elab.: J. Carvajal  
Check/Rev.:  
Sta/Crd./Aut:

Name/Nombre: SD100 IEEE mNP FRAME/ARM. 449T

Type/ Tipo: 3MSE 750 1287 a

Scale/ Escala: - / -

Ref.: Rep./ 3MSE 750 1287 a

**SIEMENS**  
GUADALAJARA FACTORY