

Data sheet for SIMOTICS S-1FG1

Article No. : **1FG1104-1RG03-2FC1-Z
B02+D01**

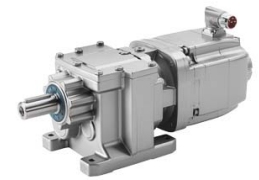


Figure similar

Client order no. :
Order no. :
Offer no. :
Remarks :

Item no. :
Consignment no. :
Project :

Gearbox data

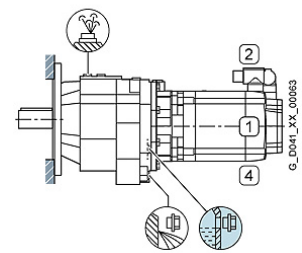
Gear box type	Z49
Gearbox basic type	Helical geared Z / D
Gearbox size	49
Transmission stages	2
Transmission (ratio)	4.62
Gear number relation	2773/600
Output moment maximum (short-time)	225 Nm
max. input speed (briefly)	4,500 rpm
Output speed short-time	974 rpm
Emergency off output moment (1000 cycles)	380 Nm
Radial force maximum	2,570 N
Max. permissible radial force with Mmax	2,570 N
Moment of inertia	2.60 kgcm ²
Torsional stiffness	11 Nm/°
Efficiency	0.97
Mounting position	M1
Mounting type	Flange version (A type)
Output shaft version	Solid shaft standard
Output shaft dimension	V30 x 60 mm
Gearbox flange diameter	140 mm
Output shaft bearing	No
Figure 2 torque support	-

General tech. specifications

Color of the housing	Standard painting (Anthracite RAL 7016)
Specification	CE / UL / CSA / EAC / cRUus
Net weight	35.05 kg
1 m-sound pressure level L _{pA} (Tol.+3dB(A))	75
Plug position	top (default) (2)
Adapter flange position	top (default) (2)

Lubrication and sealing

Output shaft sealing	Standard
Oil charge	0.55 l



Motor data

Motor type	Permanent-magnet synchronous motor
Motor type	Compact
DC-link voltage, max.	510...720V
Shaft height	100 mm
Cooling	Natural cooling
Rated speed	3,000 rpm
Rated torque (100K)	9.80 Nm
Rated power	3.08 kW
Rated current (100K)	6.60 A
Static torque	16.20 Nm
Static current	10.30 A
Moment of inertia	54.00 kgcm ²
Efficiency η	91 %
Temperature monitoring	Pt1000 temperature sensor
Connector size	1
Degree of protection	IP65
Encoder system	Encoder AM20DQI: absolute encoder 20 bits (resolution 1048576, encoder-internal 512 SJR) + 12 bits multi-turn (traversing range 4096 revolutions)

Limiting data

Maximum speed (short-time)	5,000 rpm
Maximum torque	55.00 Nm
Motor current short term	37.0 A

Optimum operating point

Optimum speed	3,000 rpm
Optimum power	3.05 kW

Data sheet for SIMOTICS S-1FG1

Article No. : 1FG1104-1RG03-2FC1-Z
B02+D01

Recommended Motor Module

Rated inverter current	18.0 A
Maximum inverter current	54.0 A
Maximum torque	55.0 Nm

Standards

Compliance with standards	CE / UL / CSA / EAC / cRUus
CE marking	EN 60034

Options

B02	Test certification (for ordered motor)
D01	M1 for helical and parallel shaft gearboxes

Info servo geared motor

Outside the standard temperature range of -10 to +40 °C, further selectable options must be observed, in addition to the lubricant selection.

Further, you have to check the suitability of the components and options used for the requested temperature range.