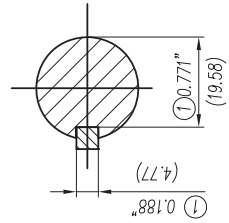


- ① Tolerances According to NEMA Std.
- ② All these dimensions corresponding to assemblies and castings shall have a tolerance as per DIN standard 1686—GTB—19.



Keyseat detail

<b>CERTIFIED PRINT</b>			
CUSTOMER			
FORM	SOM		
SP	FRM	TYPE	RZ
		VOLTS	PH

Tolerance in mm, according to DIN-1686-GTB-19	Quantity	Parts and Measure	Drawing No. Norm No.	Item No.	Material	Weight Lbs.
to 18 ± 4.5	04 03 02 01					
Over 18 to 30 ± 4.7						
Over 30 to 50 ± 5						
Over 50 to 80 ± 5.5						
Over 80 to 120 ± 6						
Over 120 to 180 ± 6.5						
Over 180 to 250 ± 7						
Over 250 to 315 ± 7.5						
Over 315 to 400 ± 8						
Over 400 to 500 ± 8.5						
Over 500 to 630 ± 9.5						
Over 630 to 800 ± 10						
		Remark				
		SIEMENS		GUADALAJARA FACTORY		
		Dimension Drawing NEMA		Scale W/O		
		Type: 1LE2 GP10A GP100A 143/145TCY FRAME 2, 4 & 6 Pol.		3MSE 220 0867		
		Ref. 3MSE 220 866		Replace		