

Data sheet for SIMOTICS M-1PH8

Article No. : 1PH8107-1HD12-2GA1

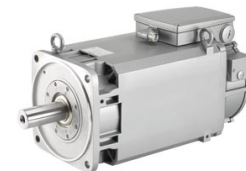


Figure similar

Client order no. :

Item no. :

Order no. :

Consignment no. :

Offer no. :

Project :

Remarks :

Engineering data

		P_N [kW]	M_N [Nm]	I_N [A]	U_N [V]	f_N [Hz]	n_N [rpm]	M_{max} [Nm]	I_{max} [A]	n_{max} [rpm]	M_0 [Nm]	I_0 [A]	η	$\cos \phi$	μ [A]
Y	ALM 400V	7.2	60.0	17.5	348	40.6	1,150	135	40.0	9,000.0	63.0	25	0.852	0.82	8.2
	BLM/SLM 400V	6.3	60.0	17.5	307	35.5	1,000	135	40.0	9,000.0	63.0	25	0.834	0.82	8.2
	ALM/BLM/SLM 480V	8.0	57.0	17.0	400	47.1	1,350	135	40.0	9,000.0	63.0	25	0.867	0.80	8.2

Mechanical data

Motor type	Squirrel cage asynchronous motor
Shaft height	100
Cooling	Forced ventilation NDE -> DE
Vibration severity grade	R/A
Shaft and flange accuracy	R
Degree of protection	IP55
Design acc. to Code I	IM B5 (IM V1, IM V3)
Temperature monitoring	KTY84 temperature sensor in the stator winding
Color	Standard (Anthracite RAL 7016)
Type of the bearing	Standard
Shaft extension	Feather key with half key balancing
Encoder system	Incremental encoder HTL 1024 S/R, max. encoder speed = 9000 rpm

Physical constants

Thermal time constant	20 min
Moment of inertia	0.0289 kgm ²
Weight (approx.)	73 kg

Connection

Type of electrical connection	Terminal box
Position of the connection	NDE top
Power connection	right
Signal connection	DE
Terminal box designation	gk813

Cooling data and sound pressure level

Airflow, min.	0.04 m ³ /s
Sound pressure level LpA(1m) motor + external fan operation 50 HZ rated load, tolerance + 3dB	70 dB ¹⁾
Air discharge	axial
Pressure drop	110 Pa

¹⁾ at a rated frequency of 4 kHz and a speed range of up to 5000 rpm