



Figure similar

MLFB-Ordering data 1FG1507-9RG33-2AH1-Z  
D14+H7A+K07+N23+Q92+Y84

Client order no. :

Order no. :

Offer no. :

Remarks :

Item no. :

Consignment no. :

Project :

### Gearbox data

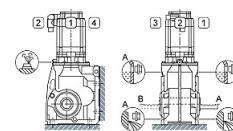
Gear box type	K69	Radial force maximum	4470 N
Gearbox basic type	Bevel geared	Max. permissible radial force with Mmax	4470 N
Gearbox size	69	Moment of inertia	3.30 kgcm <sup>2</sup>
Transmission stages	3	Torsional stiffness	55 Nm/°
Transmission (ratio)	14.84	Efficiency	0.95
Gear number relation	16027/1080	Mounting position	M4-A
Output moment maximum (short-time)	515 Nm	Mounting type	Foot-mounted
max. input speed (briefly)	4500 rpm	Output shaft version	Hollow shaft inch standard
Output speed short-time	303 rpm	Output shaft dimension	H1.5"
Emergency off output moment (1000 cycles)	875 Nm	Gearbox flange diameter	-/-
		Figure 2 torque support	-

### General tech. specifications

Degree of protection	IP65
Color of the housing	Standard painting (Anthracite RAL 7016)
Specification	CE / UL / CSA / EAC / cRUus
Net weight	59.39 kg
1m-sound pressure level L <sub>pA</sub> (ToI.+3dB(A))	75
Plug position	bottom (4)
Adapter flange position	top (default) (2)

### Lubrication and sealing

Gear oil	Polyglycol oil CLP ISO PG VG220
Output shaft sealing	Standard
Oil charge	2.80 l



MLFB-Ordering data 1FG1507-9RG33-2AH1-Z  
D14+H7A+K07+N23+Q92+Y84



Figure similar

Motor data		Limiting data	
Motor type	Permanent-magnet synchronous motor	Maximum speed (short-time)	5000 rpm
Motor type	Compact	Maximum torque	108.00 Nm
DC-link voltage, max.	510...720V	Motor current short term	84.0 A
Shaft height	100 mm	<b>Optimum operating point</b>	
Cooling	Natural cooling	Optimum speed	2400 rpm
Rated speed	3000 rpm	Optimum power	4.85 kW
Rated torque (100K)	14.00 Nm	<b>Recommended Motor Module</b>	
Rated power	4.40 kW	Rated inverter current	30.0 A
Rated current (100K)	11.20 A	Maximum inverter current	56.0 A
Static torque	31.50 Nm	Maximum torque	77.0 Nm
Static current	23.50 A	<b>Holding brake</b>	
Moment of inertia	112.00000 kgcm <sup>2</sup>	Holding brake	with holding brake
Efficiency $\eta$	90 %	Holding brake version	Permanent-magnet brake
Temperature monitoring	Pt1000 temperature sensor	Power supply voltage	DC 24 V $\pm$ 10 %
Connector size	1.5	Braking torque $M_{2Br}$	25.00 Nm
Encoder system	Encoder AM20DQI: absolute encoder 20 bits (resolution 1048576, encoder-internal 512 S/R) + 12 bits multi-turn (traversing range 4096 revolutions)	Holding torque $M_{4Br}$	43.00 Nm
		Opening time	300.0 ms
		Closing time	70.0 ms
		Maximum switching energy per braking action	3380.0 J

### Info servo geared motor

Outside the standard temperature range of -10 to +40 °C, further selectable options must be observed, in addition to the lubricant selection.

Further, you have to check the suitability of the components and options used for the requested temperature range.

MLFB-Ordering data 1FG1507-9RG33-2AH1-Z  
D14+H7A+K07+N23+Q92+Y84

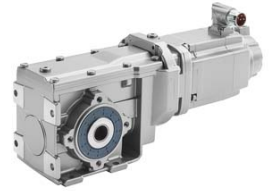


Figure similar

### Options

D14	M4-A for bevel and worm gearboxes
H7A	Hollow shaft inch standard
K07	Polyglycol oil CLP ISO PG VG220
N23	Standard holding brake (permanent magnet brake)
Q92	Plug position bottom
Y84	

### Standards

**Compliance with standards** CE / UL / CSA / EAC / cRUus

**CE marking** EN 60034