

# SIEMENS

U.S. Cat. No.	Euro Order No.	U.S. Cat. No.	Euro Order No.	U.S. Cat. No.	Euro Order No.
Item: FHVF3R	3VL9300-3JS01	FHVF4X	3VL9300-3JS41	FHVF4XNT	3VL9300-3JS61
FHVF3RB	3VL9300-3JS11	FHVF4XB	3VL9300-3JS51	FHVF4XBNT	3VL9300-3JS71
FHVL3R	3VL9400-3JS01	FHVL4X	3VL9400-3JS41	FHVL4XNT	3VL9400-3JS61
FHVL3RB	3VL9400-3JS11	FHVL4XB	3VL9400-3JS51	FHVL4XBNT	3VL9400-3JS71

## Variable Depth Flange Operator

Accionador de Profundidad variable, Tipo VL

Mécanisme d'actionnement à profondeur variable.

For Use With Frame CG, DG, FG, JG, LG  
Para Usar Con Caja Base CG, DG, FG, JG, LG

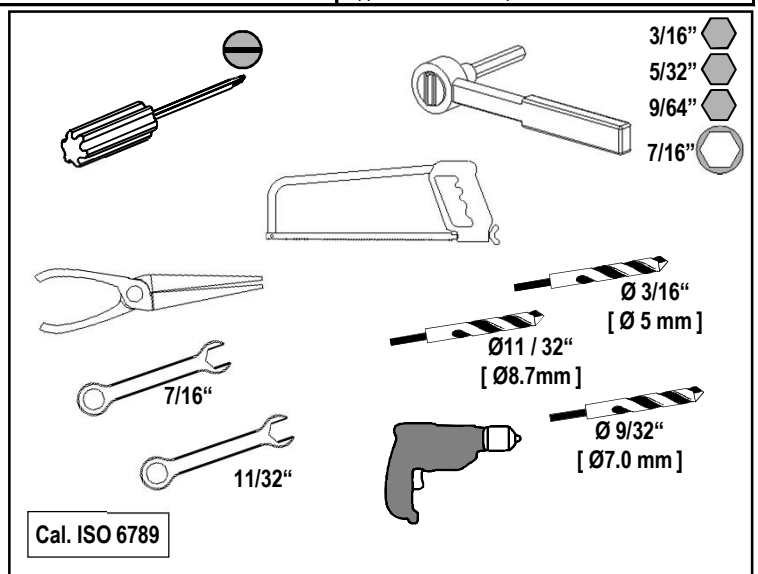
### Installation Instructions / Instructivo de Instalación

 <b>Danger</b>	 <b>Peligro</b>	 <b>Danger</b>
<b>Hazardous Voltage.</b> <b>Will cause death or serious injury.</b> Turn off and lock out all power supplying this device before working on this device. Replace all covers before power supplying this device is turned on.	<b>Tensión peligrosa.</b> <b>Puede causar la muerte o lesiones graves.</b> Desenergice totalmente antes de instalar o darle servicio. Reemplace todas las barreras y cubiertas antes de energizar el interruptor.	<b>Tension dangereuse.</b> <b>Danger de mort ou risque de blessures graves.</b> Couper l'alimentation de l'appareil et barrer avant de travailler. Remplacez tous les couverts avant que l'alimentation de pouvoir soit alimenté.

Use only with Siemens certified Components.

Utilizar únicamente con componentes certificados de Siemens.

A utiliser uniquement avec les composants certifiés Siemens.



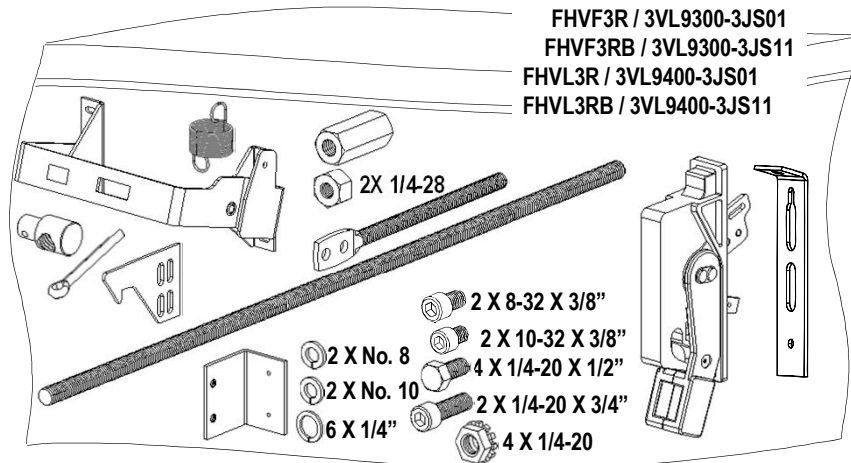
NOTE - These instructions do not purport to cover all details or variations in equipment, or to provide for every possible contingency to be met in connection with installation, operation or maintenance. Should further information be desired or should particular problems arise, which are not covered sufficiently for the purchaser's purposes, the matter should be referred to the local Siemens sales office. The contents of this instruction manual shall not become part of or modify any prior or existing agreement, commitment or relationship. The sales contract contains the entire obligation of Siemens. The warranty contained in the contract between the parties is the sole warranty of Siemens. Any statements contained herein do not create new warranties or modify the existing warranty.

Trademarks - Unless otherwise noted, all names identified by ® are registered trademarks of Siemens AG or Siemens Industry, Inc. The remaining trademarks in this publication may be trademarks whose use by third parties for their own purposes could violate the rights of the owner.

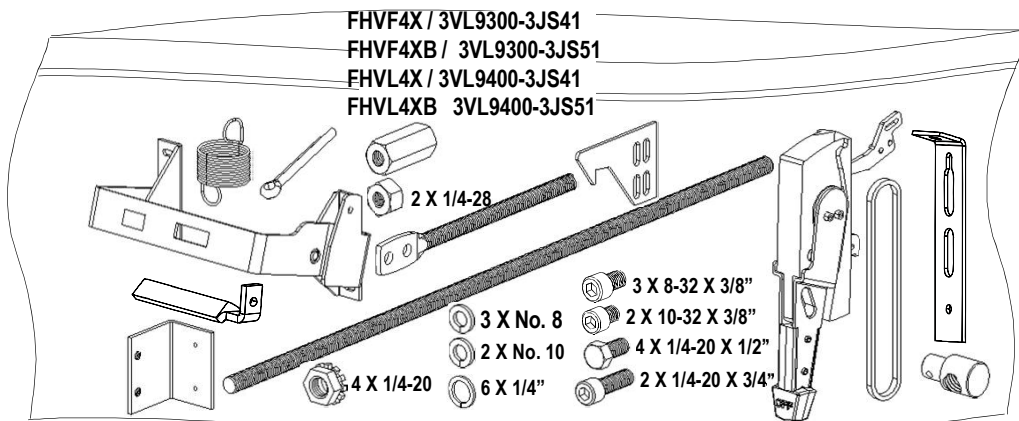


FHVF3R FHVF3RB FHVL3R FHVL3RB	Suitable For Type 1,2,3,3R,12,12K,13 enclosures [ Apto para cajas tipo 1,2,3,3R,12,12K,13 caja ]
FHVF4X / FHVF4XNT FHVF4XB / FHVF4XBNT FHVL4X / FHVL4XNT FHVL4XB / FHVL4XBNT	Suitable For Type 1,2,3,3R,4,4X,12,12K,13 enclosures [Apto para cajas tipo 1,2,3,3R,4,4X,12,12K,13 caja ]

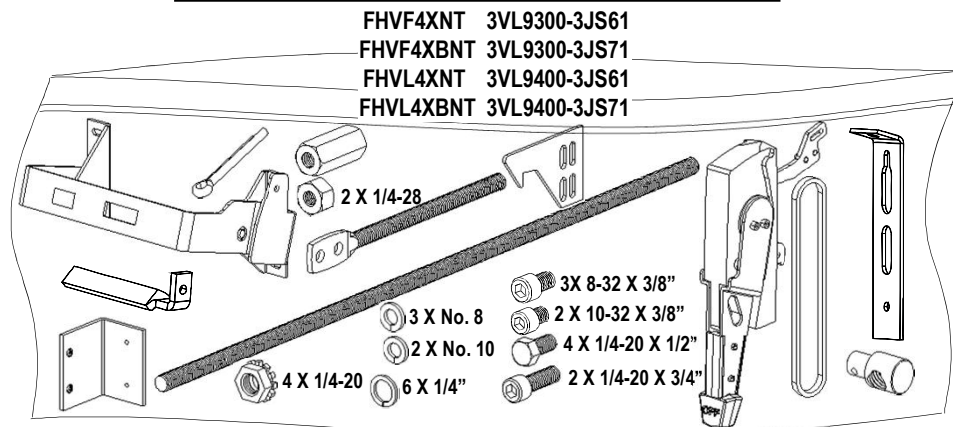
See pages 5/13, 6/13 for handle installation  
[ Ver las páginas 5/13, 6/13 para instalar manija ]



See pages 7/13, 8/13 for handle installation  
[ Ver las páginas 7/13, 8/13 para instalar manija ]



See pages 7/13, 8/13 for handle installation  
[ Ver las páginas 7/13, 8/13 para instalar manija ]

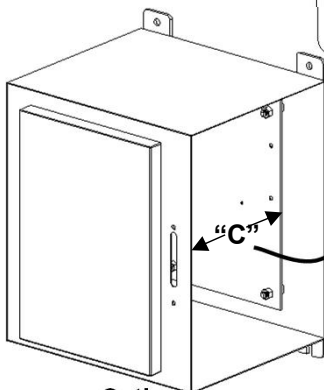
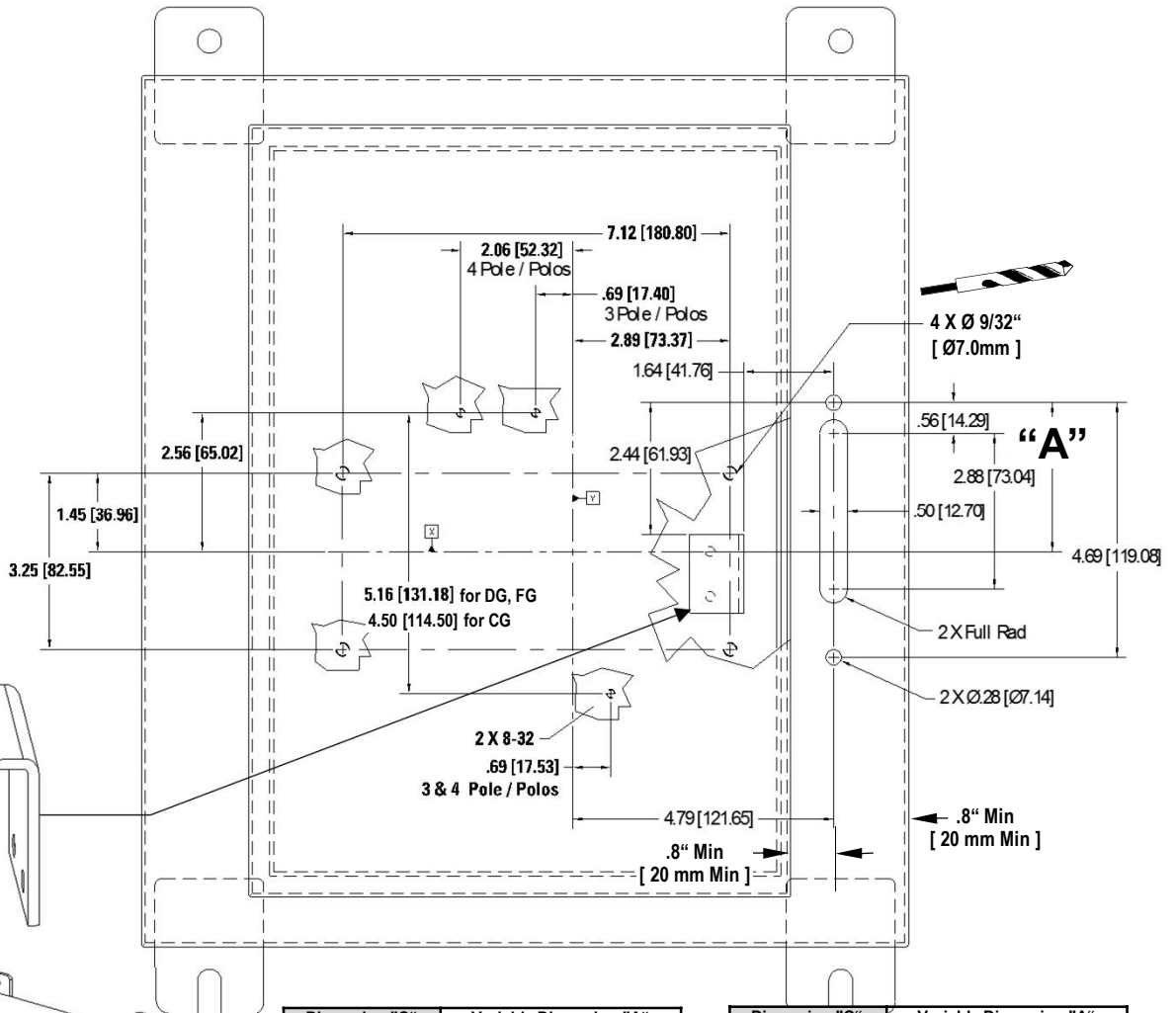


CG, DG, FG

**Dimensions for Welding or Screw-mounting the cover catch.**  
**[ Dimensiones para soldar o atornillar el seguro de la puerta. ]**

Maintain minimum cable bend radius per National Electrical Code.  
 [ Mantenga el radio mínimo en la curvatura del cable dado por National Electrical Code. ]

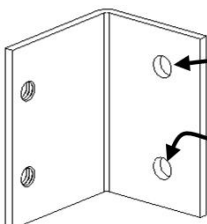
1



Option:  
[ Opción: ]

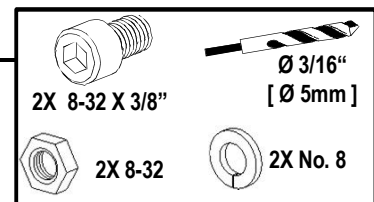
Dimension "C" [ Dimensión "C" ]	Variable Dimension "A" [ Dimensión variable "A" ]
Enclosure depth to mounting plate [ Profundidad Caja ]	CG/DG/FG
7"-7.49"	2.62" [ 66.5 mm ]
7.5"-7.99"	2.49" [ 63.2 mm ]
8"-8.49"	2.35" [ 59.7 mm ]
8.5"-8.99"	2.21" [ 56.1 mm ]
9"-9.49"	2.08" [ 58.8 mm ]
9.5"-9.99"	1.94" [ 49.3 mm ]
10"-10.49"	1.81" [ 46 mm ]
10.5"-10.99"	1.67" [ 42.4 mm ]
11"-11.49"	1.54" [ 39.1 mm ]

Dimension "C" [ Dimensión "C" ]	Variable Dimension "A" [ Dimensión variable "A" ]
Enclosure depth to mounting plate [ Profundidad Caja ]	CG/DG/FG
11.5"-11.99"	1.40" [ 35.6 mm ]
12"-12.49"	1.27" [ 32.3 mm ]
12.5"-12.99"	1.13" [ 28.7 mm ]
13"-13.49"	1" [ 25.4 mm ]
13.5"-13.99"	.85" [ 21.6 mm ]
14"-14.49"	0.72" [ 18.3 mm ]
14.5"-14.99"	.58" [ 14.7 mm ]
15"-15.49"	0.44" [ 11.2 mm ]
15.5"-15.99"	.30" [ 7.6 mm ]
16"-16.49"	0.18" [ 4.6 mm ]



2X Ø3/16"  
[ 2X Ø5mm ]

Customer supplied hardware for screw mounting option. Hardware must maintain environmental integrity (NEMA rating) of the enclosure.  
 [ Material de montaje provisto por el cliente. El material para montaje por tornillo debe mantener la integridad ambiental (grado NEMA) en la caja. ]





### Danger

**Hazardous Voltage.**  
Will cause death or serious injury.

Turn off and lock out all power supplying this device before working on this device.  
Replace all covers before power supplying this device is turned on.

### Peligro

**Tensión peligrosa.**  
Puede causar la muerte o lesiones graves.

Desenergice totalmente antes de instalar o darle servicio.  
Reemplace todas las barreras y cubiertas antes de energizar el interruptor.

### Danger

**Tension dangereuse.**  
Danger de mort ou risque de blessures graves.

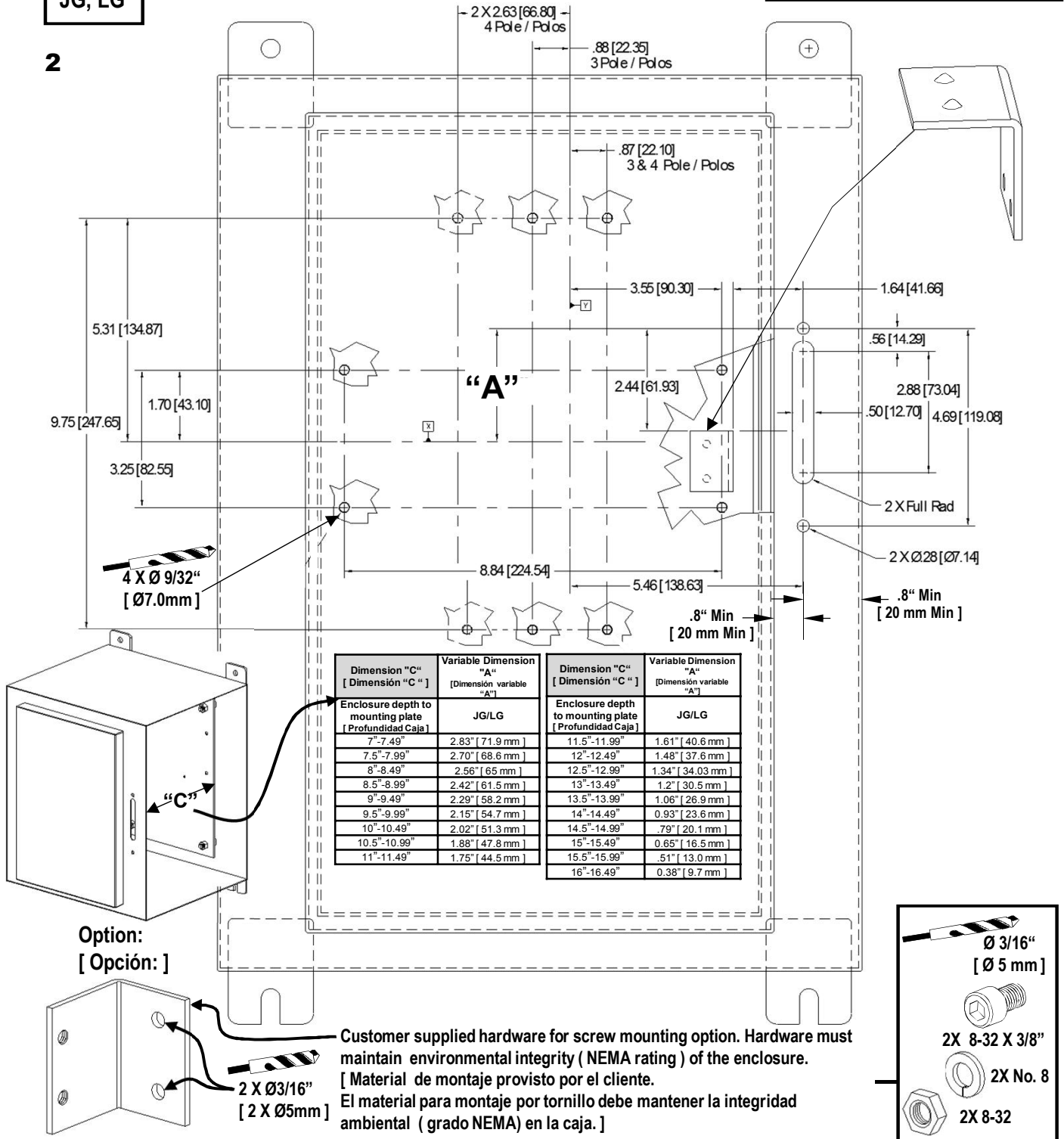
Couper l'alimentation de l'appareil et barrer avant de travailler.  
Remplacez tous les couverts avant que l'alimentation de pouvoir soit alimenté.

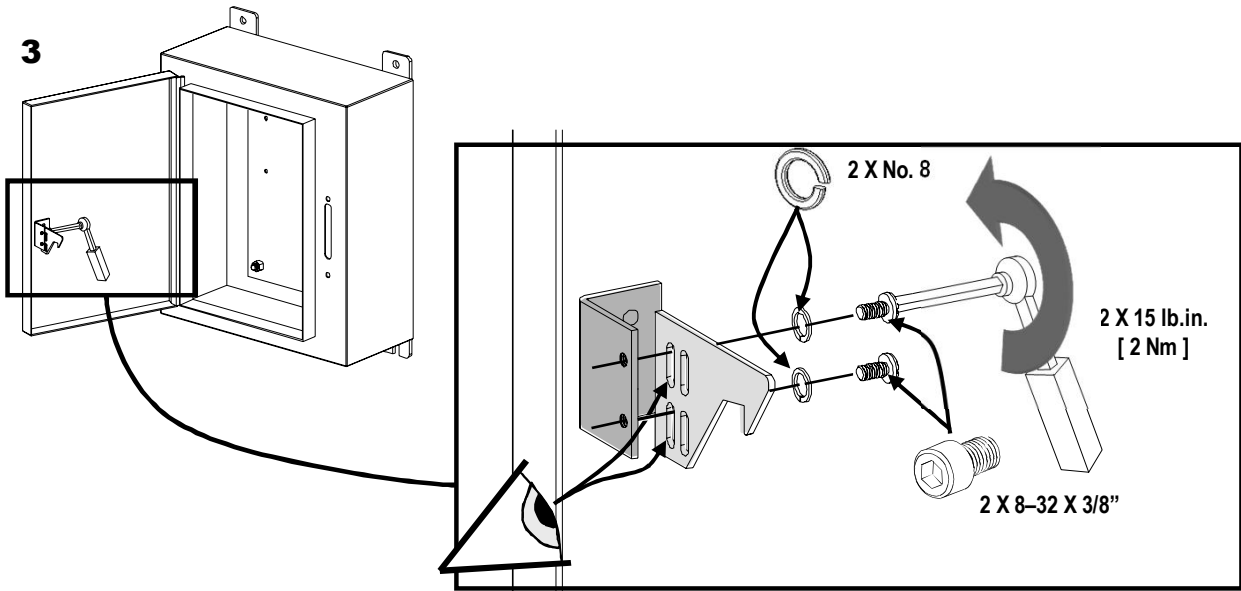
**Dimensions for Welding or Screw-mounting the cover catch.**  
[ Dimensiones para soldar o atornillar el seguro de la puerta. ]

Maintain minimum cable bend radius per National Electrical Code.  
[ Mantenga el radio mínimo en la curvatura del cable dado por National Electrical Code. ]

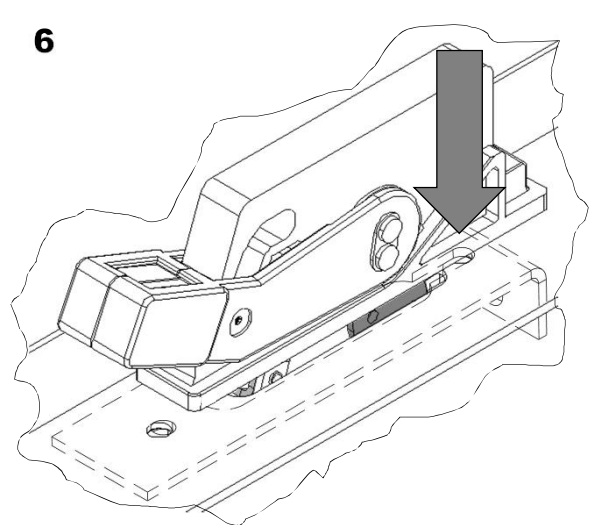
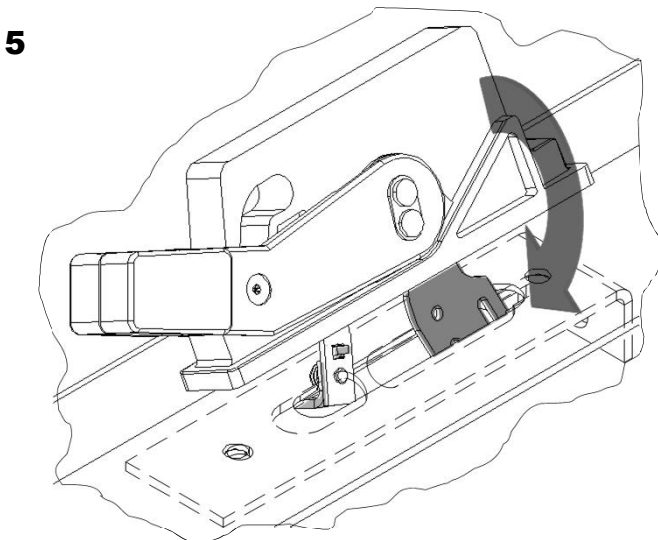
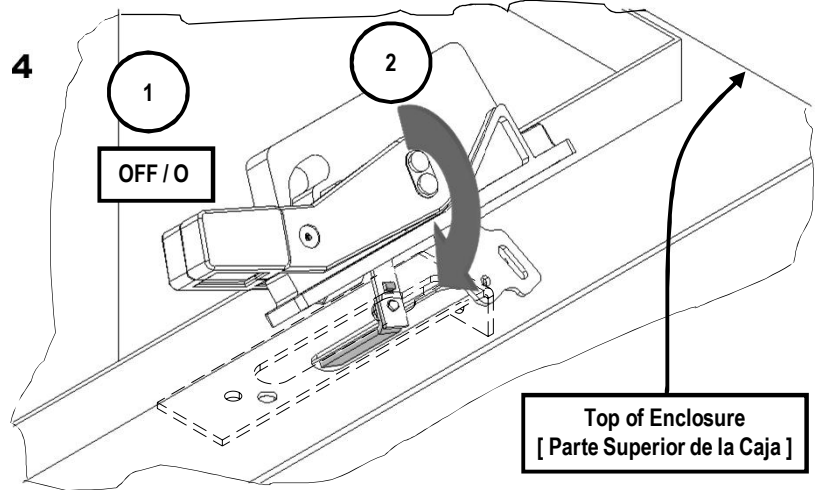
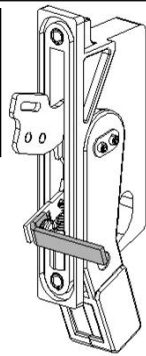
JG, LG

2





FHVF3R / 3VL9300-3JS01  
 FHVF3RB / 3VL9300-3JS11  
 FHVL3R / 3VL9400-3JS01  
 FHVL3RB / 3VL9400-3JS11





### Danger

#### Hazardous Voltage.

Will cause death or serious injury.

Turn off and lock out all power supplying this device before working on this device.

Replace all covers before power supplying this device is turned on.



### Peligro

#### Tensión peligrosa.

Puede causar la muerte o lesiones graves.

Desenergice totalmente antes de instalar o darle servicio.

Reemplace todas las barreras y cubiertas antes de energizar el interruptor.

### Danger

#### Tension dangereuse.

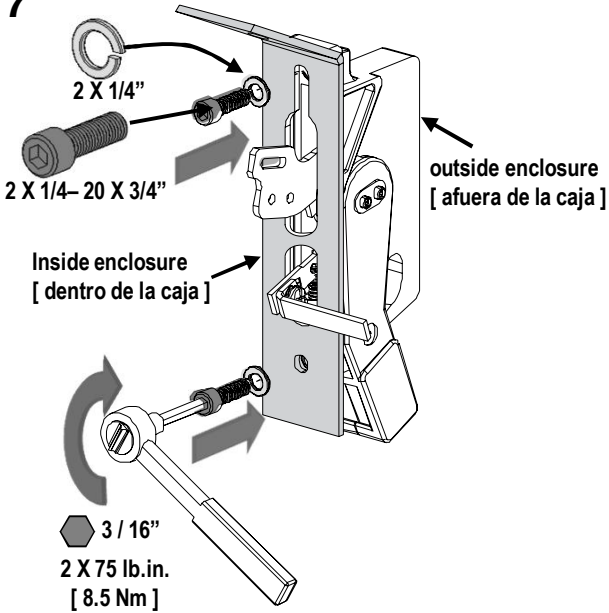
Danger de mort ou risque de blessures graves.

Couper l'alimentation de l'appareil et barrer avant de travailler.

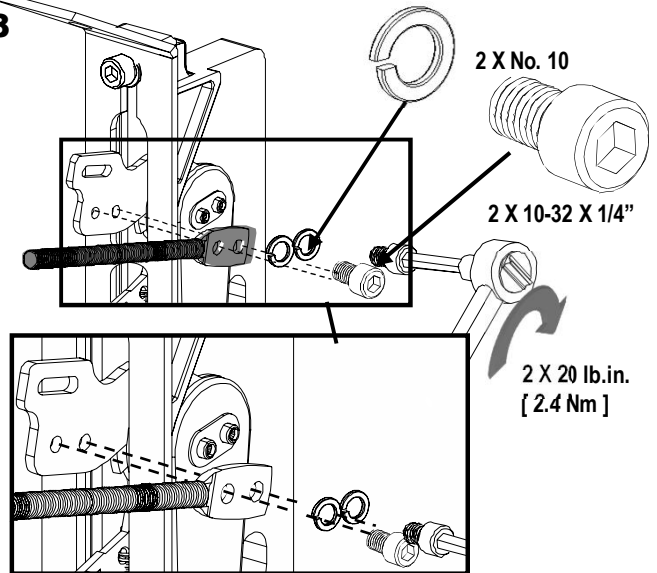
Remplacez tous les couverts avant que l'alimentation de pouvoir soit alimenté.

Enclosure removed for clarity  
[Caja removida por claridad]

7

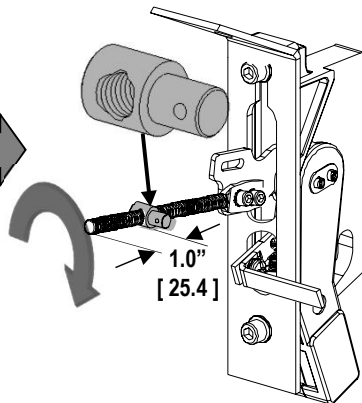
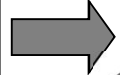
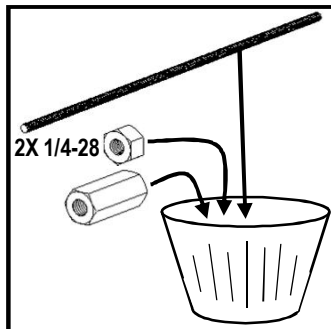
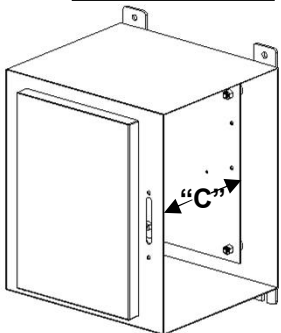


8



9a

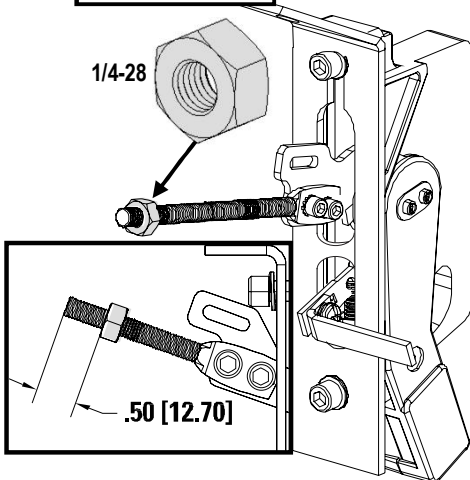
"C" ≤ 8.0" =



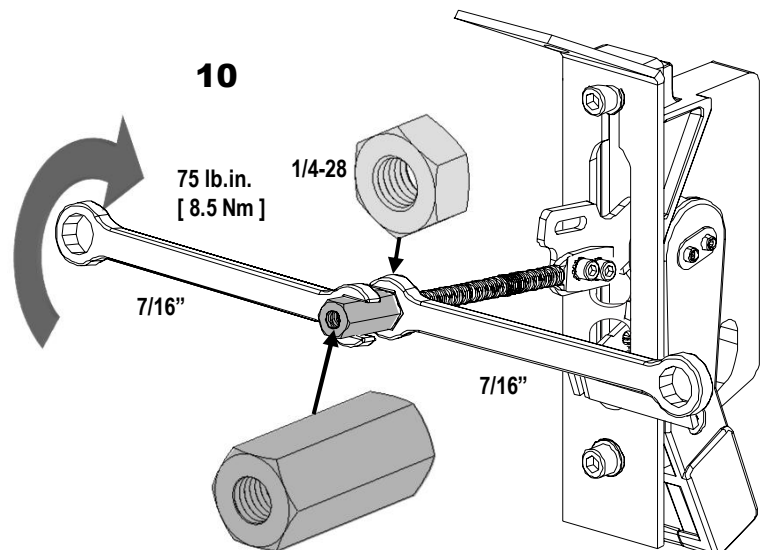
Go to Step 20  
[ Ir al Paso 20 ]

9b

"C" > 8.0"



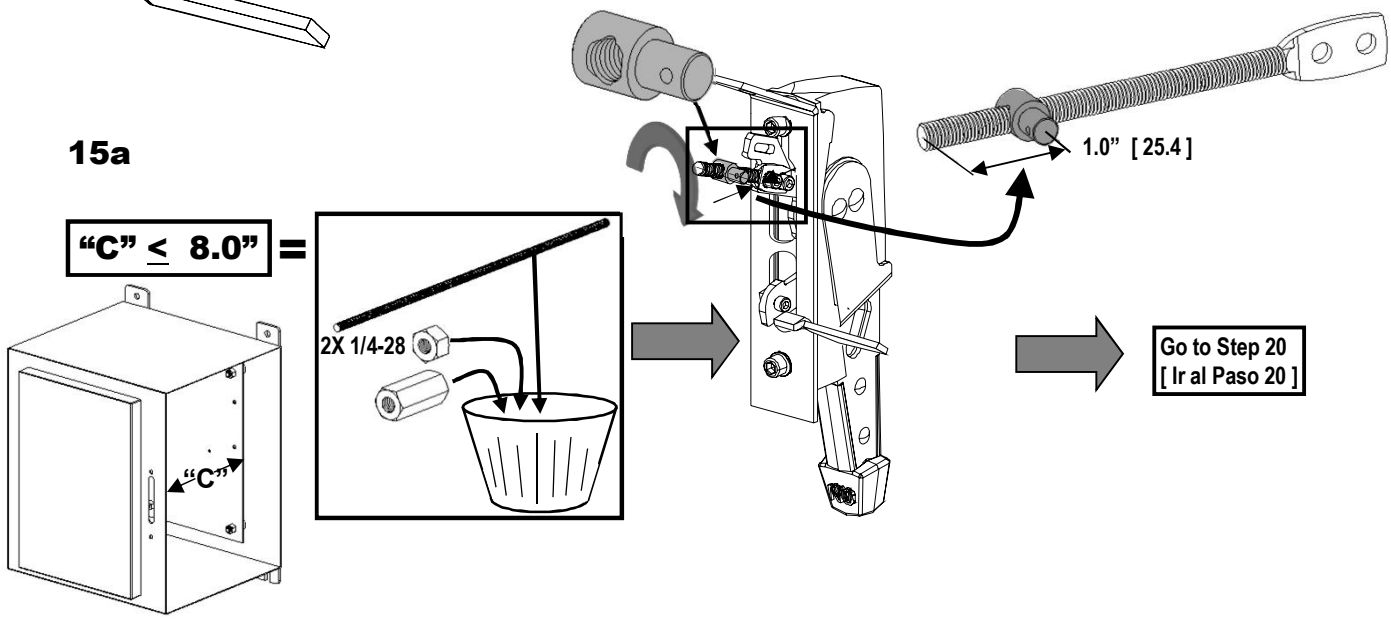
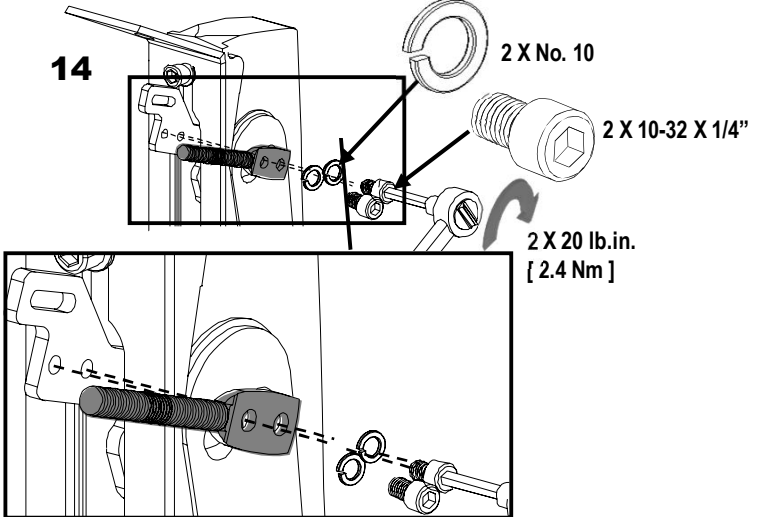
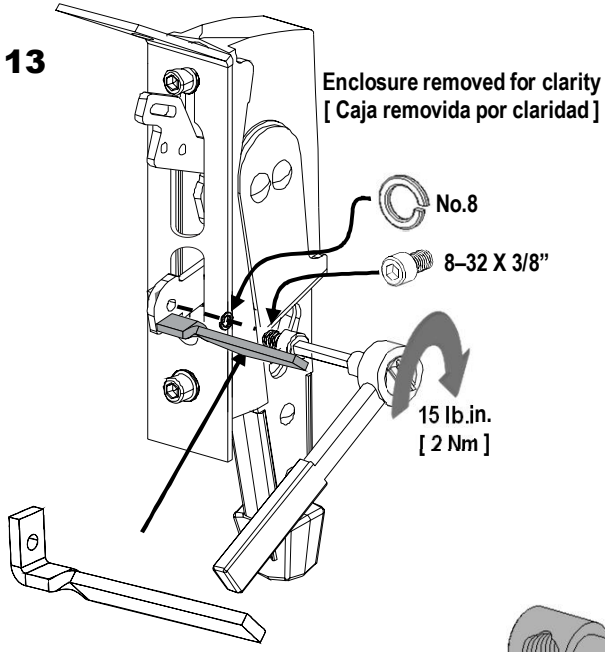
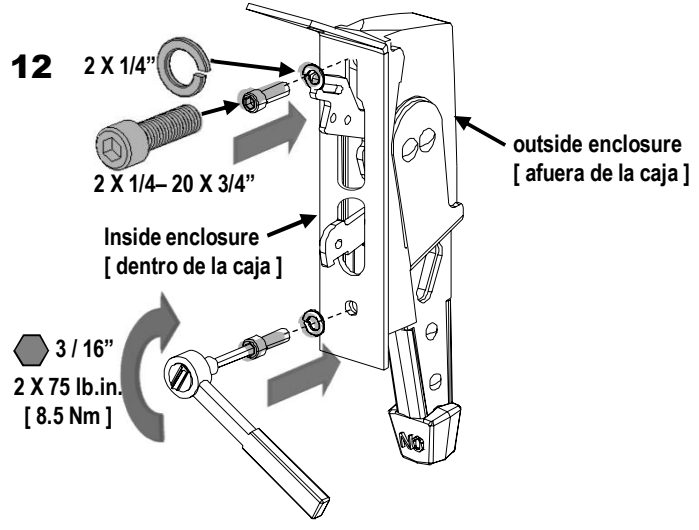
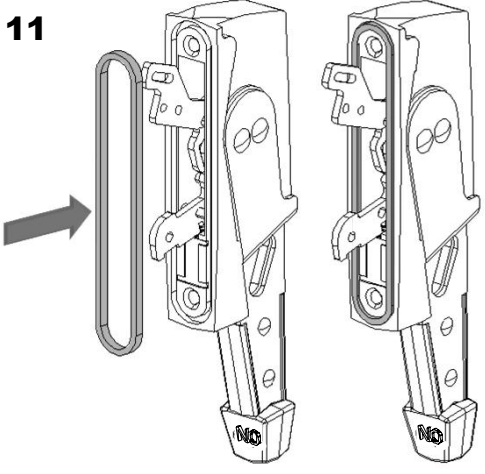
10



FHVF4X / 3VL9300-3JS41  
 FHVF4XB / 3VL9300-3JS51  
 FHVL4X / 3VL9400-3JS41  
 FHVL4XB / 3VL9400-3JS51

FHVF4XNT / 3VL9300-3JS61  
 FHVF4XBNT / 3VL9300-3JS71  
 FHVL4XNT / 3VL9400-3JS61  
 FHVL4XBNT / 3VL9400-3JS71

Enclosure removed for clarity  
 [Caja removida por claridad]





### **⚠ Danger**

**Hazardous Voltage.**  
**Will cause death or serious injury.**

Turn off and lock out all power supplying this device before working on this device.  
Replace all covers before power supplying this device is turned on.

### **⚠ Peligro**

**Tensión peligrosa.**  
**Puede causar la muerte o lesiones graves.**

Desenergice totalmente antes de instalar o darle servicio.  
Reemplace todas las barreras y cubiertas antes de energizar el interruptor.

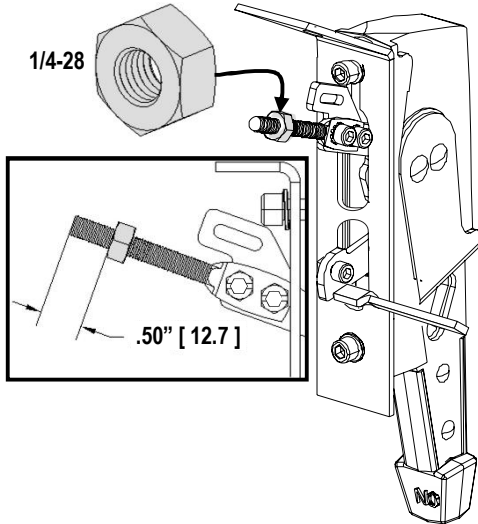
### **⚠ Danger**

**Tension dangereuse.**  
**Danger de mort ou risque de blessures graves.**

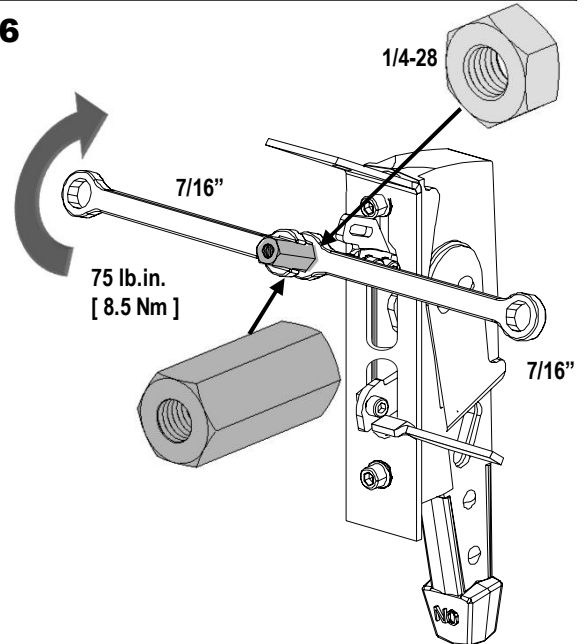
Couper l'alimentation de l'appareil et barrer avant de travailler.  
Remplacez tous les couverts avant que l'alimentation de pouvoir soit alimenté.

**15b**

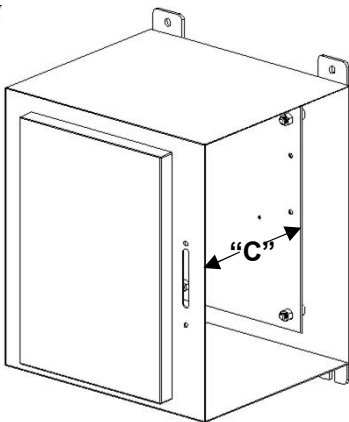
**"C" > 8.0"**



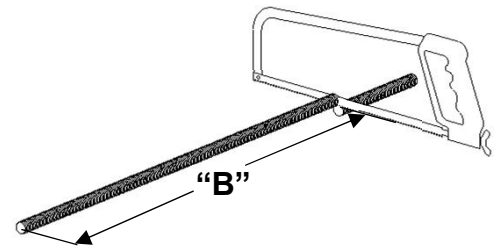
**16**



**17**

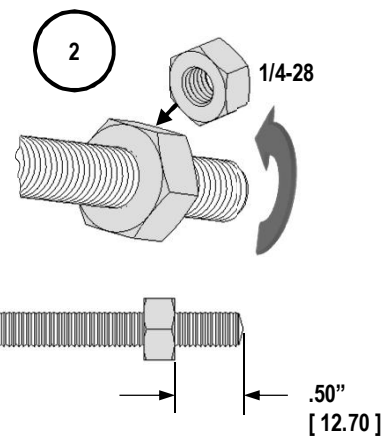
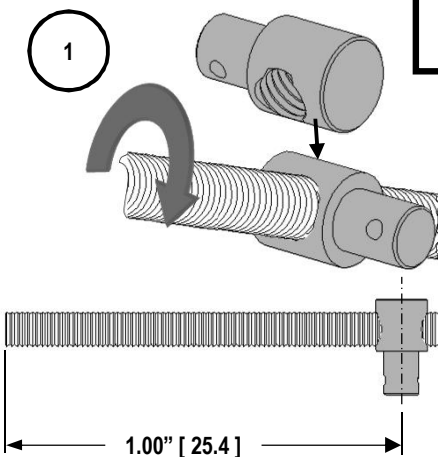


- FHVF3R / 3VL9300-3JS01
- FHVF3RB / 3VL9300-3JS11
- FHVF4X / 3VL9300-3JS41
- FHVF4XB / 3VL9300-3JS51
- FHVL3R / 3VL9400-3JS01
- FHVL3RB / 3VL9400-3JS11
- FHVL4X / 3VL9400-3JS41
- FHVL4XB / 3VL9400-3JS51
- FHVF4XNT / 3VL9300-3JS61
- FHVF4XBNT / 3VL9300-3JS71
- FHVL4XNT / 3VL9400-3JS61
- FHVL4XBNT / 3VL9400-3JS71

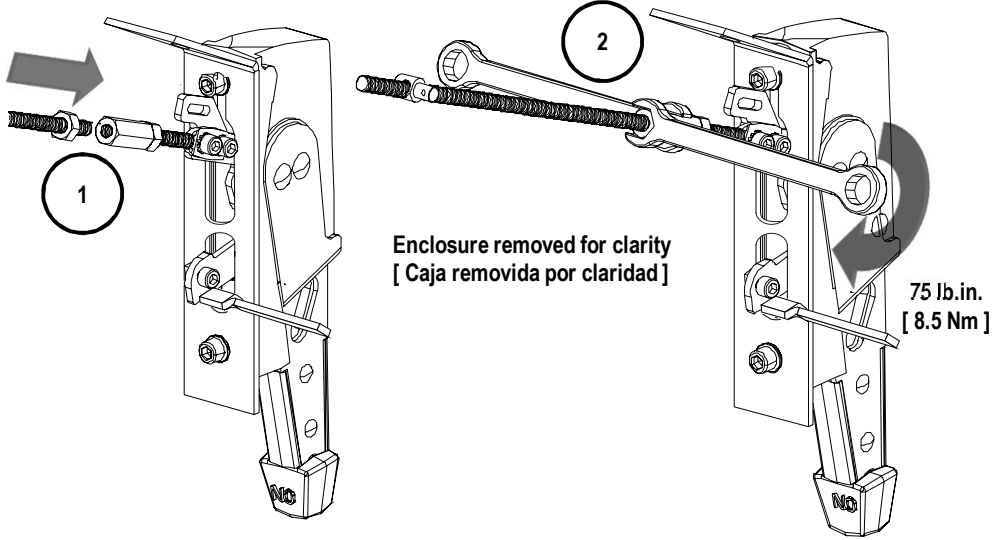


**18**

**"C" - 8.0" = "B"**  
**[ 203.2 ]**

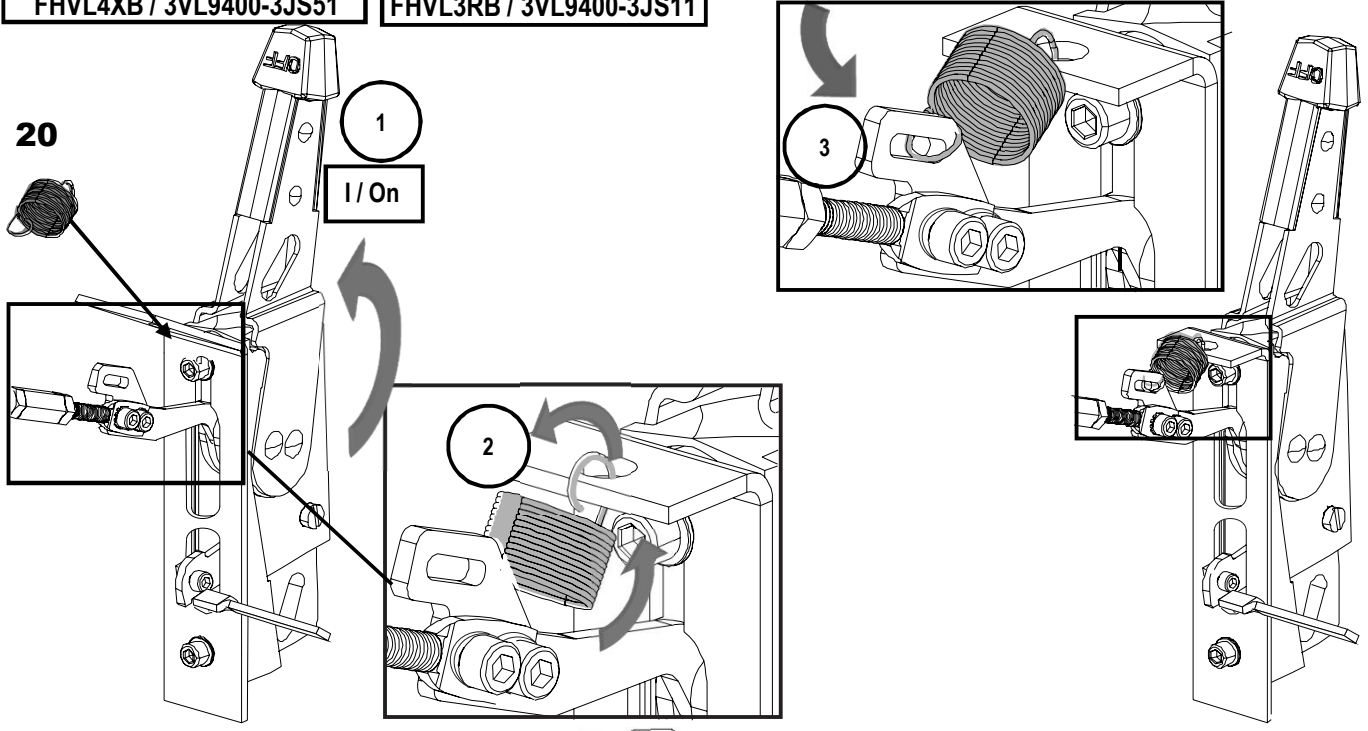


19

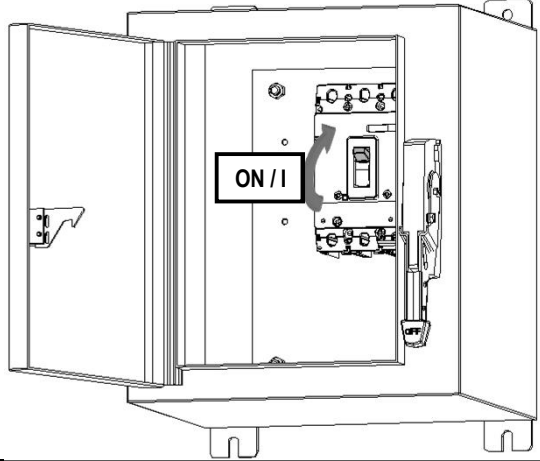


FHVF4X / 3VL9300-3JS41	FHVF3R / 3VL9300-3JS01
FHVF4XB / 3VL9300-3JS51	FHVF3RB / 3VL9300-3JS11
FHVL4X / 3VL9400-3JS41	FHVL3R / 3VL9400-3JS01
FHVL4XB / 3VL9400-3JS51	FHVL3RB / 3VL9400-3JS11

20



21





### ⚠ Danger

**Hazardous Voltage.  
Will cause death or serious injury.**



Turn off and lock out all power supplying this device before working on this device.  
Replace all covers before power supplying this device is turned on.

### ⚠ Peligro

**Tensión peligrosa.  
Puede causar la muerte o lesiones graves.**

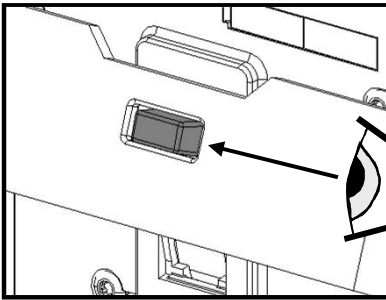
Desenergice totalmente antes de instalar o darle servicio.  
Reemplace todas las barreras y cubiertas antes de energizar el interruptor.

### ⚠ Danger

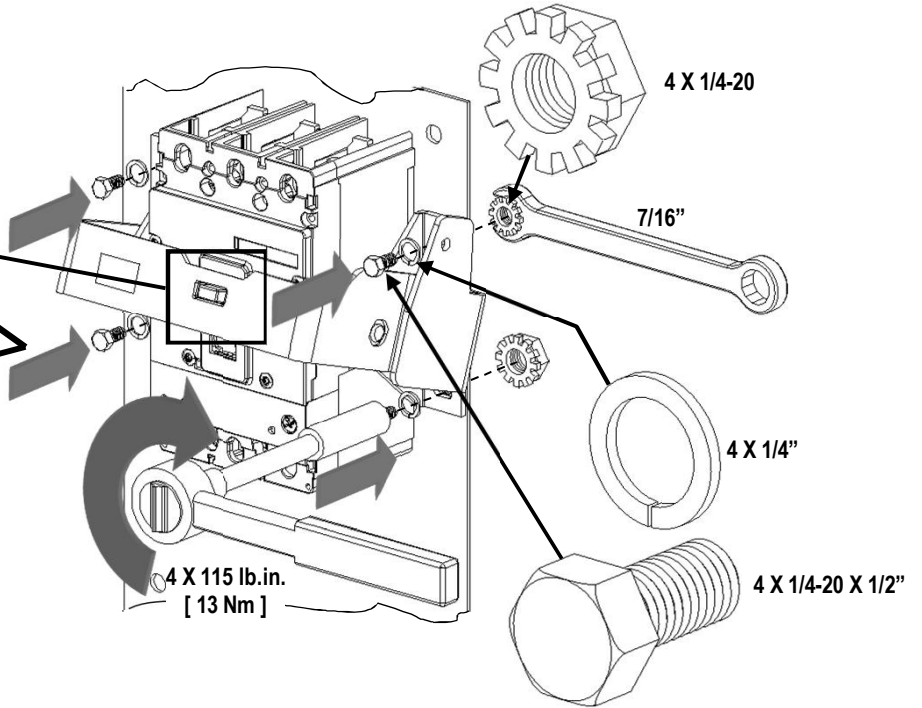
**Tension dangereuse.  
Danger de mort ou risque de blessures graves.**

Couper l'alimentation de l'appareil et barrer avant de travailler.  
Remplacez tous les couverts avant que l'alimentation de pouvoir soit alimenté.

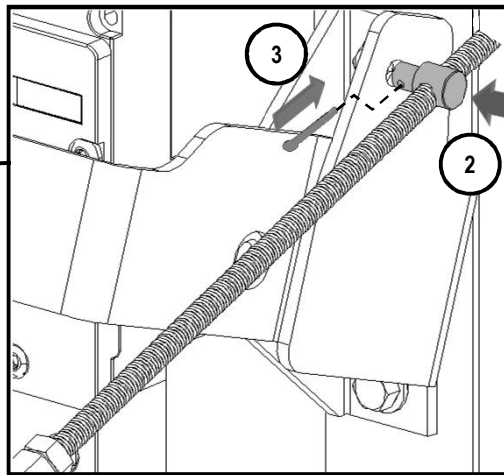
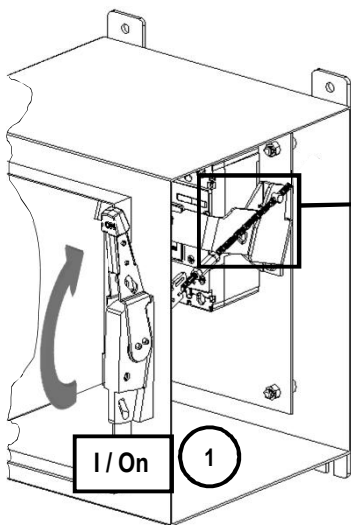
**22**



Enclosure removed for clarity  
[ Caja removida por claridad ]



**23**





### ⚠ Danger

**Hazardous Voltage.**  
**Will cause death or serious injury.**

Turn off and lock out all power supplying this device before working on this device.  
Replace all covers before power supplying this device is turned on.

### ⚠ Peligro

**Tensión peligrosa.**  
**Puede causar la muerte o lesiones graves.**

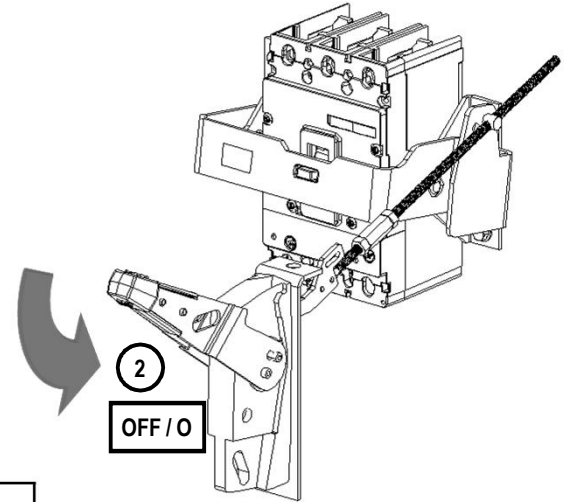
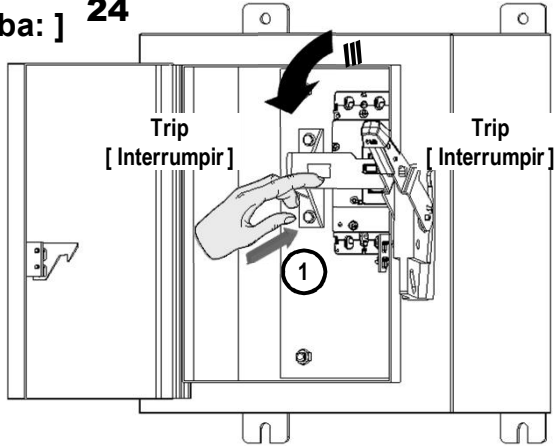
Desenergice totalmente antes de instalar o darle servicio.  
Reemplace todas las barreras y cubiertas antes de energizar el interruptor.

### ⚠ Danger

**Tension dangereuse.**  
**Danger de mort ou risque de blessures graves.**

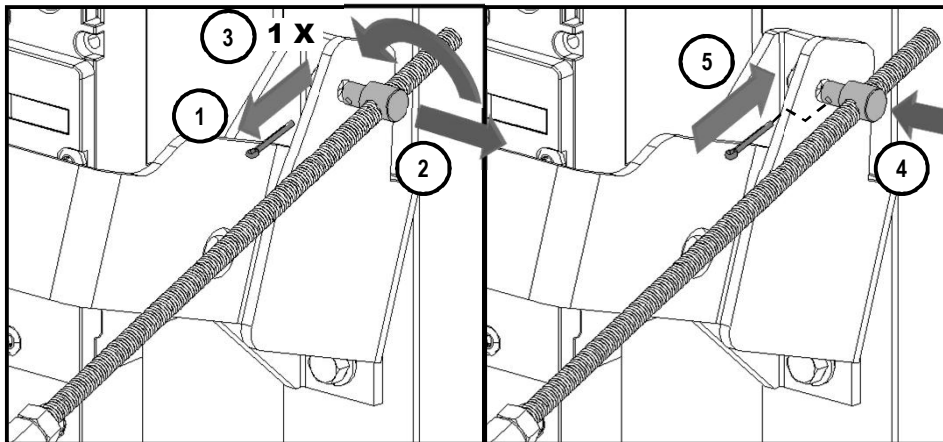
Couper l'alimentation de l'appareil et barrer avant de travailler.  
Remplacez tous les couverts avant que l'approvisionnement de pouvoir soit alimenté.

**Test:**  
**[ Prueba: ] 24**



		Result [ Resultado ]		Step [ Paso ]
24	Trip → OFF / O	OFF / O	OK	26
	Trip	Trip	⊗	25

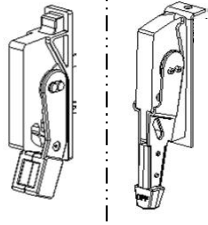
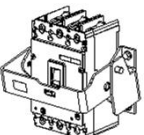
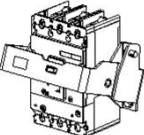

**25**



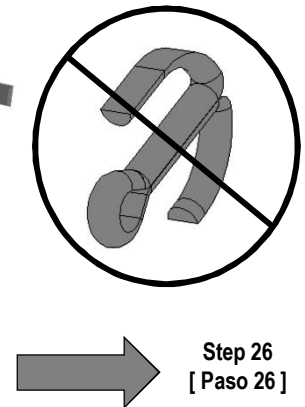
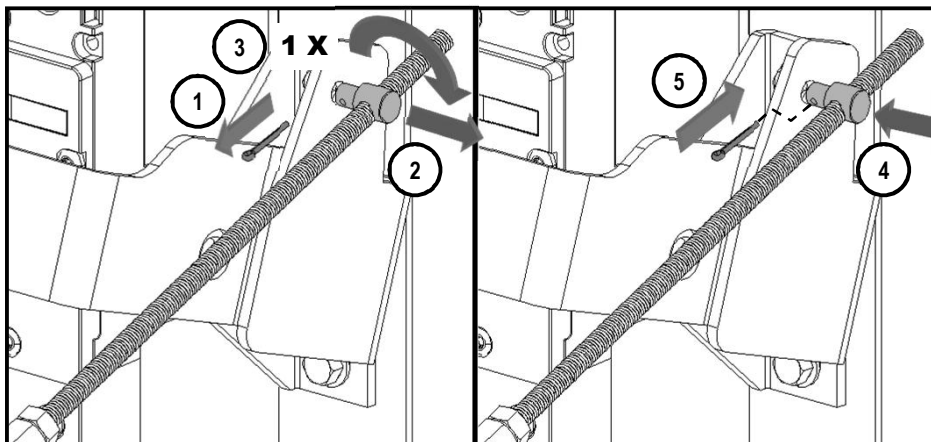
➔ **Step 24**  
**[ Paso 24 ]**

Test:  
[ Prueba: ]

26

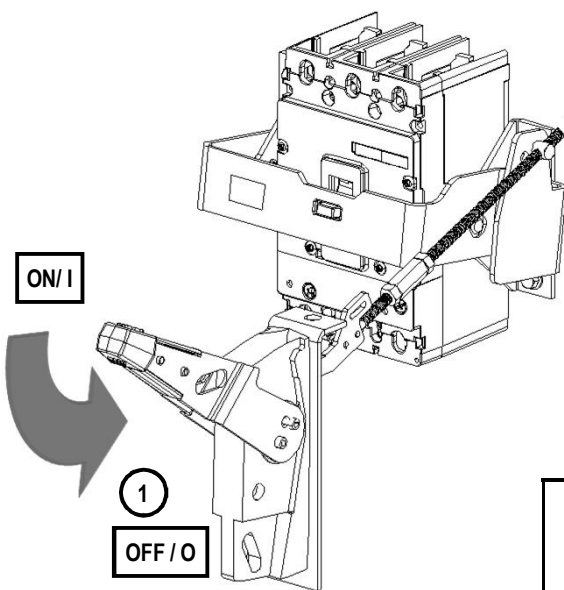
		Result [ Resultado ]		Step [ Paso ]
		OFF / O 	ON / I 	
			OK	28
26	OFF / O → ON / I			27

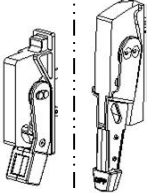
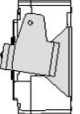

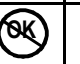
27

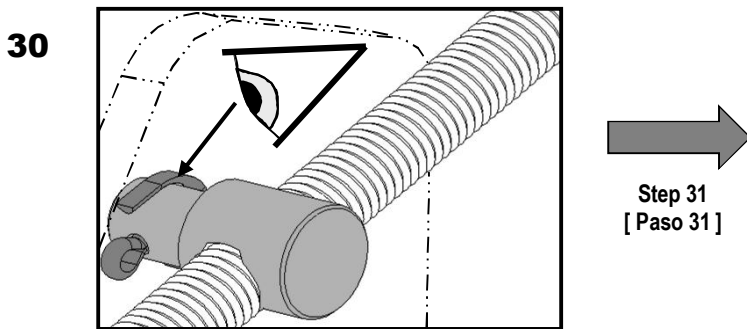
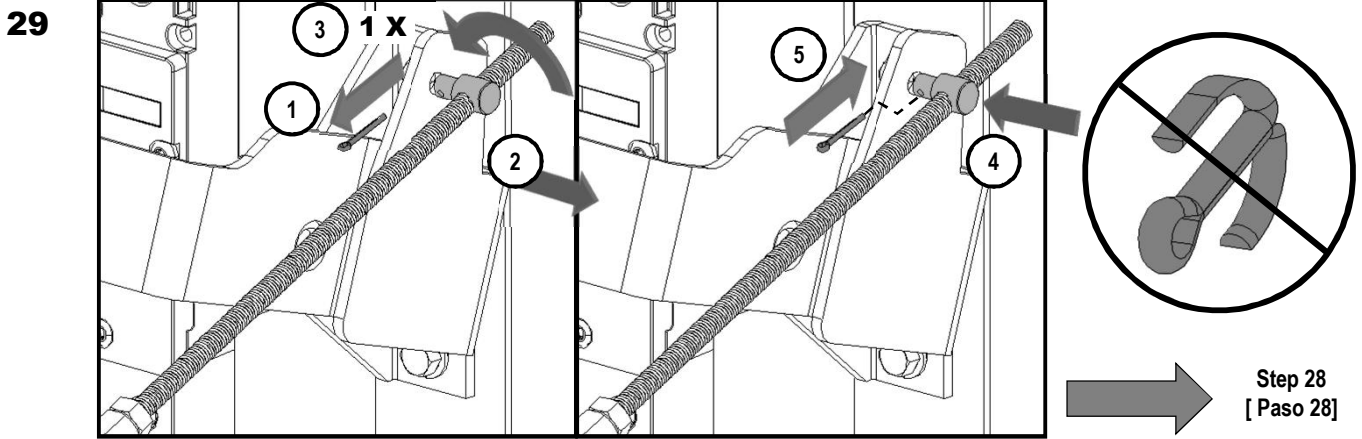


Test:  
[ Prueba: ]

28



		Result [ Resultado ]		Step [ Paso ]
		OFF / O 	ON / I 	
		OFF / O	OK	30
28	ON / I → OFF / O	ON / I		29

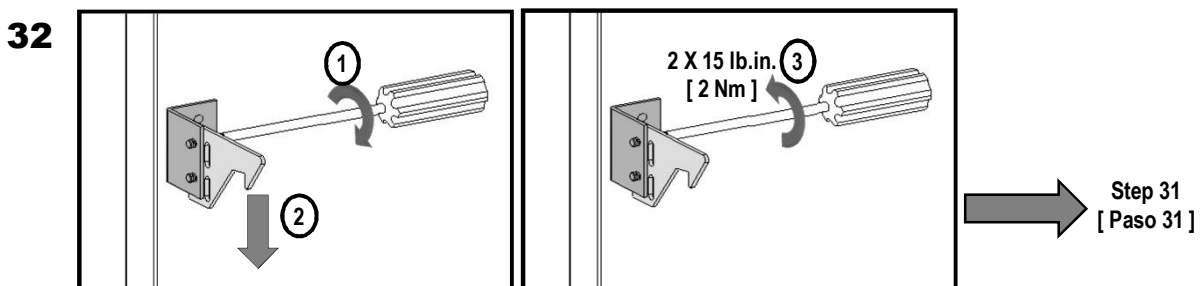


**Test: Door Latch**  
[ Prueba: Seguro de la Puerta ]

The following instructions illustrate the correct assembly for door interlock system in enclosures where the door catch is not preinstalled.

**31**

		Result [ Resultado ]		Step [ Paso ]
		Open [ Abierta ]	Closed [ Cerrados ]	
				<b>33</b>
		OFF/O  ON/I	5 lbf [ 22 N ]	





### ⚠ Danger

**Hazardous Voltage.  
Will cause death or serious injury.**

Turn off and lock out all power supplying this device before working on this device.  
Replace all covers before power supplying this device is turned on.

### ⚠ Peligro

**Tensión peligrosa.  
Puede causar la muerte o lesiones graves.**

Desenergice totalmente antes de instalar o darle servicio.  
Reemplace todas las barreras y cubiertas antes de energizar el interruptor.

### ⚠ Danger

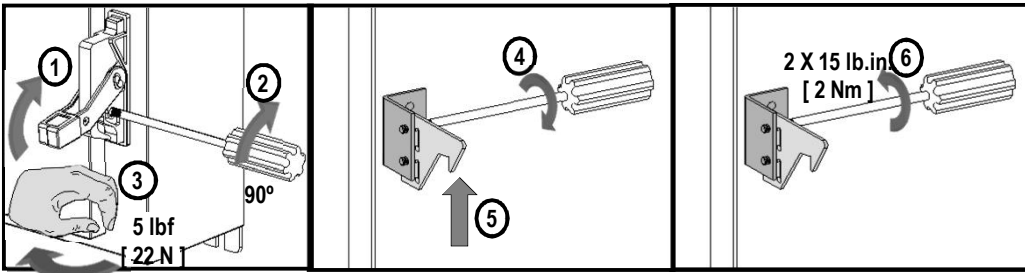
**Tension dangereuse.  
Danger de mort ou risque de blessures graves.**

Couper l'alimentation de l'appareil et barrer avant de travailler.  
Remplacez tous les couverts avant que l'approvisionnement de pouvoir soit alimenté.

**33**

		<b>Result [ Resultado ]</b>		<b>Step [ Paso ]</b>
		 Open [ Abierta ]	 Closed [ Cerrados ]	
ON / I  OFF / O	5 lbf [ 22 N ]			<b>34</b>

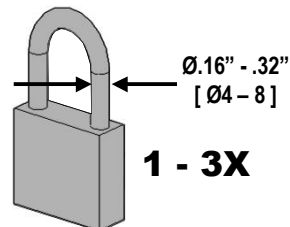
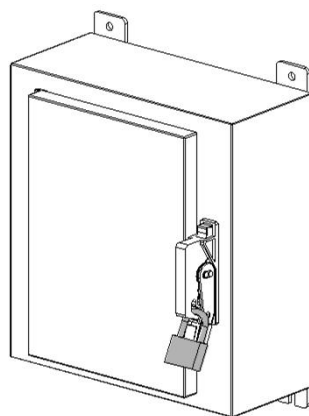
**34**



**Step 33  
[ Paso 33 ]**

**Option:  
[ Opción: ]**

Padlock OFF / O  
[Candado OFF / O ]





### **⚠ Danger**

**Hazardous Voltage.  
Will cause death or serious injury.**

Turn off and lock out all power supplying this device before working on this device.  
Replace all covers before power supplying this device is turned on.

### **⚠ Peligro**

**Tensión peligrosa.  
Puede causar la muerte o lesiones graves.**

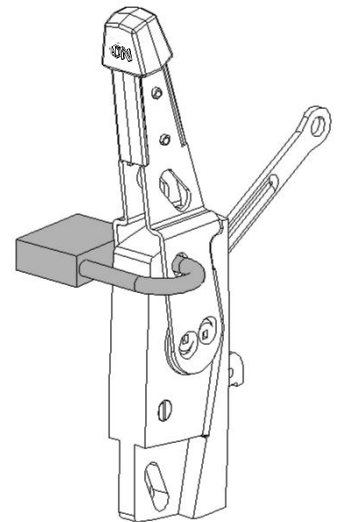
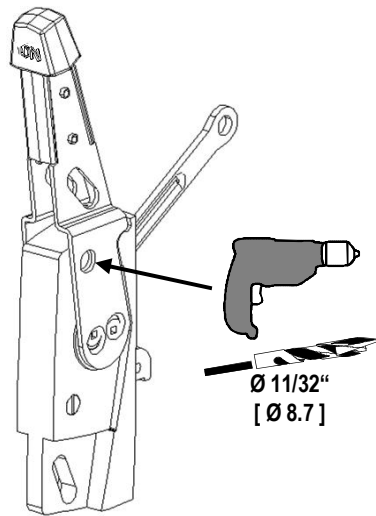
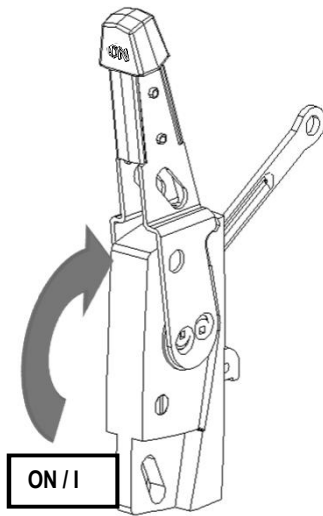
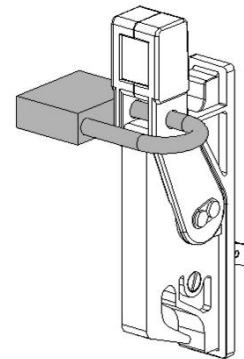
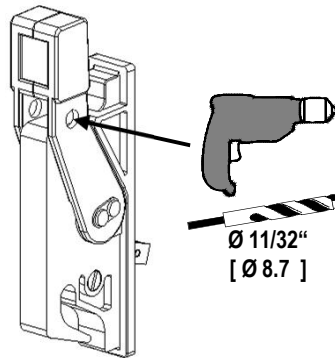
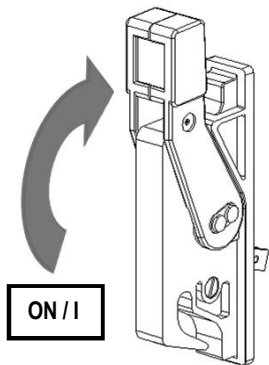
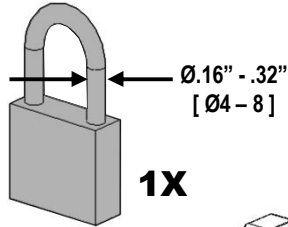
Desenergice totalmente antes de instalar o darle servicio.  
Reemplace todas las barreras y cubiertas antes de energizar el interruptor.

### **⚠ Danger**

**Tension dangereuse.  
Danger de mort ou risque de blessures graves.**

Couper l'alimentation de l'appareil et barrer avant de travailler.  
Remplacez tous les couverts avant que l'alimentation de pouvoir soit alimenté.

**Option:  
[ Opción: ]**  
Padlock ON / I  
[ Candado ON / I ]



### **NOTICE**

Installation varies depending on enclosure manufacturer; please refer to individual manufacturer's instructions.

### **NOTA**

La instalación varía dependiendo del fabricante de la caja; consulte las instrucciones del fabricante.

### **REMARQUER**

L'installation varie selon le fabricant de l'armoire; Veuillez vous référer aux instructions du fabricant.

### **For Support in Europe refer to :**

Bestell-Nr. / Order No.: 3ZX1012-0VL68-2BA4

Internet: [www.siemens.de/lowvoltage/technical-assistance](http://www.siemens.de/lowvoltage/technical-assistance)

GWA 4NEB 179 6948-10 DS 03

Technical Support:

Toll Free: 1-800-241-4453

Internet: [www.usa.siemens.com/powerdistribution](http://www.usa.siemens.com/powerdistribution)

Subject to change without prior notice  
Siemens Energy & Automation, Inc. 2003, Bellefontaine, Ohio 43311 U.S.A.

15 / 15

© Siemens Energy & Automation Inc. 2003

806948A04