

Figure similar

MLFB-Ordering data 1FG1504-9QD22-2FL1-Z
D12+G23+H3A+K06

Client order no. :

Order no. :

Offer no. :

Remarks :

Item no. :

Consignment no. :

Project :

Gearbox data

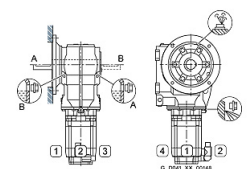
Gear box type	K39	Radial force maximum	3740 N
Gearbox basic type	Bevel geared	Max. permissible radial force with Mmax	3650 N
Gearbox size	39	Moment of inertia	0.51 kgcm ²
Transmission stages	3	Torsional stiffness	23 Nm/°
Transmission (ratio)	16.98	Efficiency	0.94
Gear number relation	1953/115	Mounting position	M2-A
Output moment maximum (short-time)	166 Nm	Mounting type	Flange version (A type)
max. input speed (briefly)	4500 rpm	Output shaft version	Hollow shaft S disk standard I
Output speed short-time	265 rpm	Output shaft dimension	HS30 mm
Emergency off output moment (1000 cycles)	370 Nm	Gearbox flange diameter	160 mm
		Output shaft bearing	No
		Figure 2 torque support	-

General tech. specifications

Degree of protection	IP65
Color of the housing	Standard painting (Anthracite RAL 7016)
Specification	CE / UL / CSA / EAC / cRUus
Net weight	17.93 kg
1m-sound pressure level L_{pA} (ToI.+3dB(A))	65
Plug position	top (default) (2)
Adapter flange position	top (default) (2)

Lubrication and sealing

Gear oil	Mineral oil CLP ISO VG220
Output shaft sealing	Seal longer service life
Oil charge	0.90 l



MLFB-Ordering data 1FG1504-9QD22-2FL1-Z
D12+G23+H3A+K06

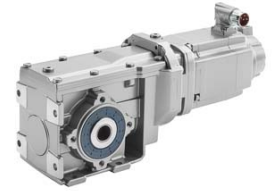


Figure similar

Motor data		Limiting data	
Motor type	Permanent-magnet synchronous motor	Maximum speed (short-time)	9000 rpm
Motor type	Compact	Maximum torque	10.50 Nm
DC-link voltage, max.	510...720V	Motor current short term	5.6 A
Shaft height	48 mm	Optimum operating point	
Cooling	Natural cooling	Optimum speed	2000 rpm
Rated speed	2000 rpm	Optimum power	0.53 kW
Rated torque (100K)	2.50 Nm	Recommended Motor Module	
Rated power	0.52 kW	Rated inverter current	3.0 A
Rated current (100K)	1.45 A	Maximum inverter current	9.0 A
Static torque	2.85 Nm	Maximum torque	10.5 Nm
Static current	1.55 A		
Moment of inertia	2.90 kgcm ²		
Efficiency η	89 %		
Temperature monitoring	Pt1000 temperature sensor		
Connector size	1		
Encoder system	Encoder AS20DQI: absolute encoder single-turn 20 bits		

Info servo geared motor

Outside the standard temperature range of -10 to +40 °C, further selectable options must be observed, in addition to the lubricant selection.

Further, you have to check the suitability of the components and options used for the requested temperature range.

MLFB-Ordering data 1FG1504-9QD22-2FL1-Z
D12+G23+H3A+K06

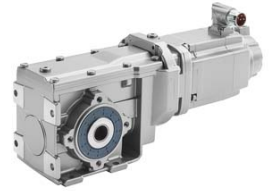


Figure similar

Options

D12	M2-A for bevel and worm gearboxes
G23	Seal longer service life
H3A	Hollow shaft S disk standard I
K06	Mineral oil CLP ISO VG220

Standards

Compliance with standards CE / UL / CSA / EAC / cRUus

CE marking EN 60034