

Technical data sheet - Cable Entry System for cables

Cable fittings and accessories

Identification	Type	CABLEFIX X 12
	Part-No.	606550

Use/Application/Characteristics

Application	Cablefix flanges are used to introduce cables and wires into a housing. They are used in light to medium-weight machine and plant construction.
Characteristics	<ul style="list-style-type: none">• Simple entering of the cables• X-cut and a special substance on the back of the membrane closes and seals the holes after removing the cables• Compact and space-saving design

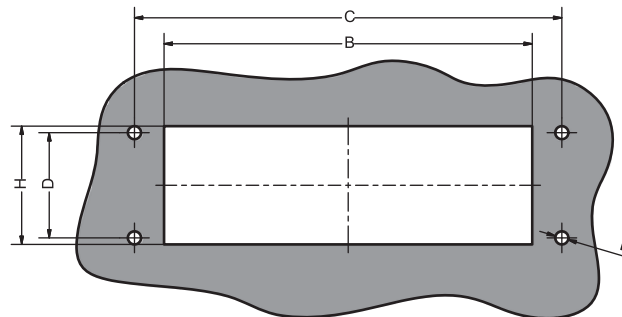
Technical data

Dimensions (w x h x d)	148 x 60 x 13.5 mm
Number of cables x cable diameter	12 x 5 – 13 mm
Number of cables	12
Approvals	UL Type 4X (Ø 5 – 13 mm) UL Type 12/13 (Ø 4 – 13 mm)
Strain relief according to	EN 62444
Protection class	IP65

Construction

Description	CABLEFIX® X 12
Material	PA 6
Material seal	PUR
Material spacer	Rubber
Material membrane	Butyl rubber
Color	black

Dimensions



01.03.2019 – Subject to technical modification

Part-No. 606550

USA: LUTZE INC.

13330 South Ridge Drive • Charlotte, NC 28273, USA
Tel. +1 (704) 504-0222 • Fax +1 (704) 504-0223
www.lutze.com • info@lutze.com

United Kingdom: LÜTZE Ltd.

Unit 3, Sandy Hill Park
Sandy Way, Amington • GB-Tamworth, Staffs B77 4DU
Tel. +44 (0)1827 31333-0 • Fax +44 (0)1827 31333-2
www.lutze.com • sales.gb@lutze.co.uk



Technical data sheet - Cable Entry System for cables

Cut-out (BxH)	112 x 36 mm
C	130.0 mm
D	32.0 mm
E	4.2 mm

01.03.2019 – Subject to technical modification

Part-No. 606550

USA: LUTZE INC.

13330 South Ridge Drive • Charlotte, NC 28273, USA
Tel. +1 (704) 504-0222 • Fax +1 (704) 504-0223
www.lutze.com • info@lutze.com

United Kingdom: LÜTZE Ltd.

Unit 3, Sandy Hill Park
Sandy Way, Amington • GB-Tamworth, Staffs B77 4DU
Tel. +44 (0)1827 31333-0 • Fax +44 (0)1827 31333-2
www.lutze.com • sales.gb@lutze.co.uk



SYSTEMATIC TECHNOLOGY