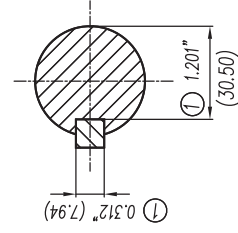


5/16"-18NC Tapped Hole for Grounding both sides of Frame

- 1) Tolerances According to NEMA Std.
- 2) All these dimensions corresponding to assemblies and castings shall have a tolerance as per DIN standard 1686-GTB 19.
- 3) Not According to NEMA Std.



Keyseat detail
Detalle Cuñero

CERTIFIED PRINT/CERTIFICACION			
CUSTOMER/CIENTE			
SUPPLIER/COMPAÑIA			
PP	FRM	FRM/FRM	FRM/FRM
PP	FRM	FRM/FRM	FRM/FRM

Tol. in mm. acc. to Tol. in mm. segun DIN-1686-GTB-19		To d'fic.	
Over/desde	to/hasta	European Projection/Proyeccion Europea	Date/Fecha
18	± 4.5	Dim. in inches/Dim. en pulg.	03/03/08
30	± 4.7	Name/Nombre	Supmár
50	± 5	Drawn/Elab	GP100
80	± 5.5	Check/Rev.	213/215TC Arm.
120	± 6	Std.Cnd./Aut	
180	± 6.5		
250	± 7		
315	± 7.5		
400	± 8		
500	± 8.5		
630	± 9.5		
800	± 10		

g) Se cambio formato a Inglés-Español y se especificó tipos en los que aplica este dibujo.
a) Changed the format to English-Spanish and was specified in what kind of motors apply this drawing.

SIEMENS
GUADALAJARA FACTORY

Scale/Escala: Sin W/O

3MSE 222 0851a

Ref. 3MSE 222 0851