

pushbutton, flat, red, for pushbutton, with laser labeling, inscription or symbol Customer-specific selection with SIRIUS ACT configurator (CIN)

Product brand name	SIRIUS ACT
Product designation	Button
Design of the product	flat
Product type designation	3SU1

Actuator

Outer diameter of the actuating element	23.7 mm
------------------------------------------------	---------

Ambient conditions

Environmental category during operation acc. to IEC 60721	3M6, 3S2, 3B2, 3C3, 3K6 (with relative air humidity of 10 ... 95 %)
-----------------------------------------------------------	---------------------------------------------------------------------

Installation/ mounting/ dimensions

Depth	2.2 mm
--------------	--------

Accessories

Material of accessory	Plastic
Color of accessory	red

Certificates/ approvals

General Product Approval	Declaration of Conformity	Test Certificates
--------------------------	---------------------------	-------------------



[Miscellaneous](#)

[Type Test Certificates/Test Report](#)

Marine / Shipping



other

[Confirmation](#)

Further information

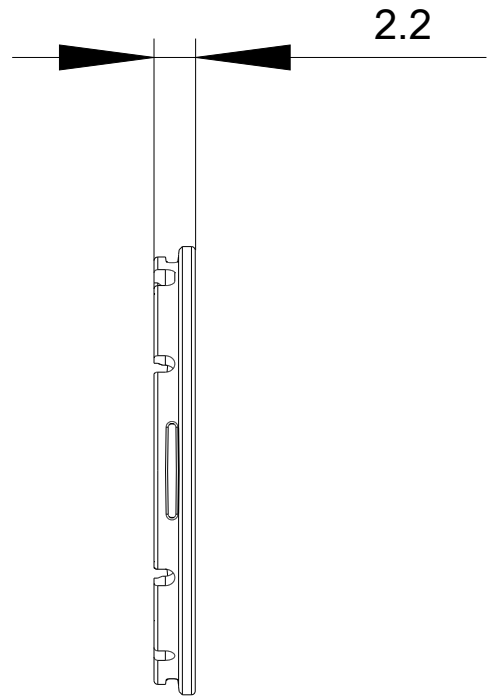
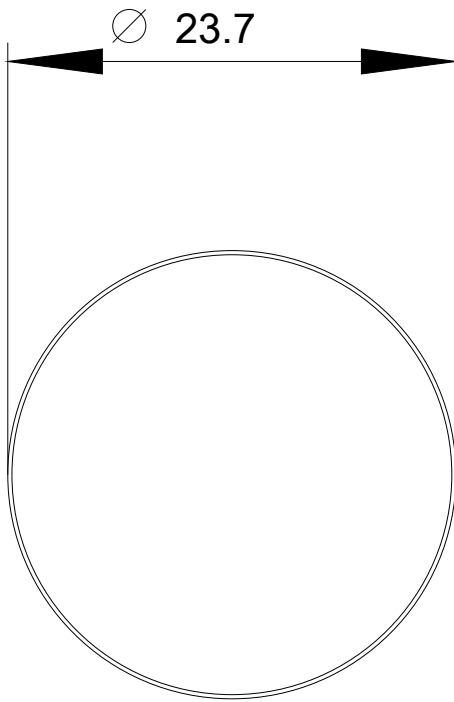
Information- and Downloadcenter (Catalogs, Brochures,...)
<https://www.siemens.com/ic10>

Industry Mall (Online ordering system)
<https://mall.industry.siemens.com/mall/en/en/Catalog/product?mlfb=3SU1900-0FT20-0AA0-Z Y19>

Cax online generator
<http://support.automation.siemens.com/WW/CAXorder/default.aspx?lang=en&mlfb=3SU1900-0FT20-0AA0-Z Y19>

Service&Support (Manuals, Certificates, Characteristics, FAQs,...)
<https://support.industry.siemens.com/cs/ww/en/ps/3SU1900-0FT20-0AA0-Z Y19>

Image database (product images, 2D dimension drawings, 3D models, device circuit diagrams, EPLAN macros, ...)
http://www.automation.siemens.com/bilddb/cax_de.aspx?mlfb=3SU1900-0FT20-0AA0-Z Y19&lang=en



last modified:

02/06/2020