



**Operating Shaft
Sectionneur
Betätigungswelle
Varilla de operación
Veio de accionamento
Albero di azionamento**
(Cat 194R-S1, -S2)



WARNING: To prevent electrical shock, disconnect from power source before installing or servicing. Install in suitable enclosure.

AVERTISSEMENT: Avant le montage et la mise en service, couper l'alimentation secteur pour éviter toute décharge. Prévoir une mise en coffret ou armoire appropriée.

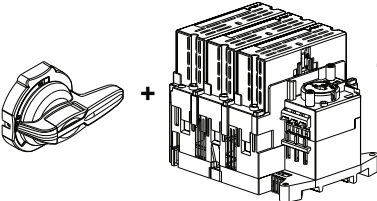
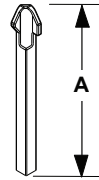
WARNUNG: Vor Installations- oder Servicearbeiten Stromversorgung zur Vermeidung von elektrischen Unfällen trennen. Die Geräte müssen in einem passenden Gehäuse eingebaut und gegen Verschmutzung geschützt werden.

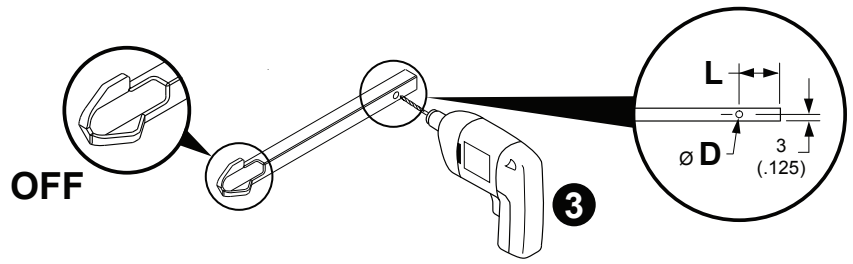
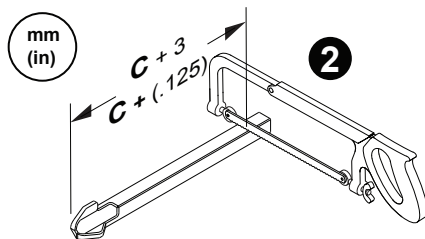
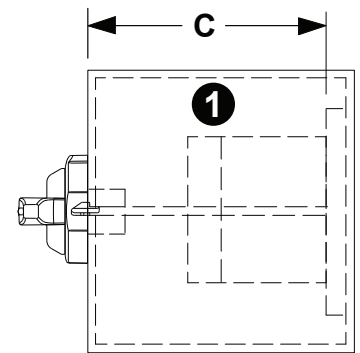
ADVERTENCIA: Desconéctese de la corriente eléctrica, antes de la instalación o del servicio, a fin de impedir sacudidas eléctricas. Instálelo en una caja apropiada.

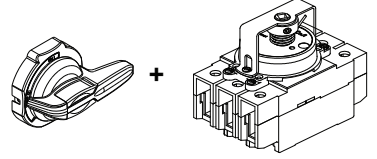
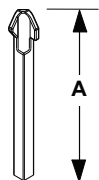
ATENÇÃO: Para evitar choques, desconectar da corrente elétrica antes de fazer a instalação ou a manutenção. Instalar em caixa apropriada.

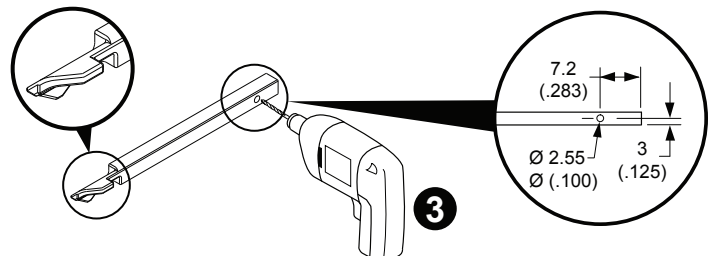
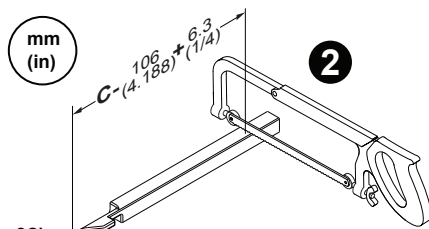
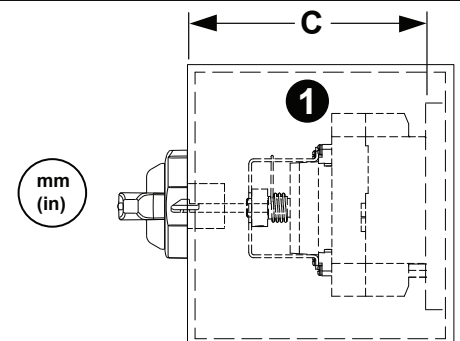
AVVERTENZA: Per prevenire infortuni, togliere tensione prima dell'installazione o manutenzione. Installare in custodia idonea.

**Modification
Änderung
Modificación
Modificação
Modifica**

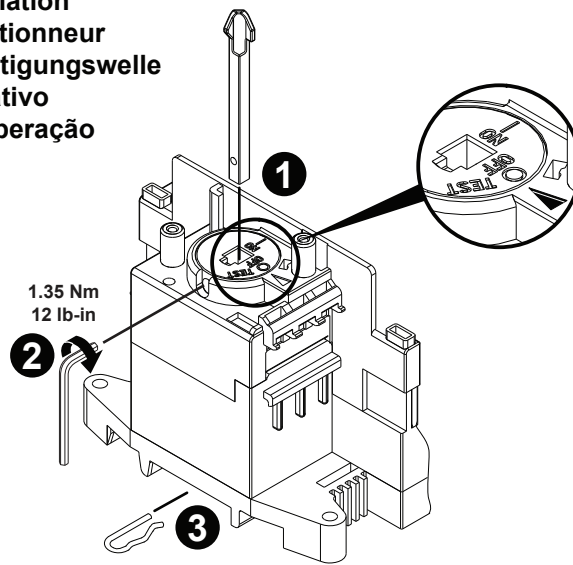
		A	D	L	C		
					MIN	MAX	
194R-P _	194R-_-_-1753 (S)	194R-S1	311 (12.25)	2 (.078)	3 (.125)	147.6 (5.81)	260 (10.23)
		194R-S2	539 (21.25)	2 (.078)	3 (.125)	147.6 (5.81)	454 (17.87)
194R-P _	194R-N_-_-1753 (S)	194R-S1	311 (12.25)	2 (.078)	3 (.125)	117.5 (4.625)	260 (10.23)
		194R-S2	539 (21.25)	2 (.078)	3 (.125)	117.5 (4.625)	454 (17.87)



		A	C		
			MIN	MAX	
140U-PB 140U-PY	198-H1	194R-S1	305 (12)	153 (6.02)	369 (14.52)
		194R-S2	533 (21)	153 (6.02)	563 (22.16)



Typical Operating Shaft Installation
Installation standard d'un sectionneur
Typische Installation der Betätigungswelle
Instalación típica de eje operativo
Instalação típica do eixo de operação



1

*Minimum distance from hinge to shaft centerline is 76 mm / 3 inches

2

*Minimum distance from hinge to shaft centerline is 76 mm / 3 inches

Masking tape
 Du ruban adhésif
 Abdeckband
 Cinta adhesiva
 Fita adesiva
 Nastro adesivo

1

194R-...-1753 (S) Shown

2

3

Mark from shaft head
 Marque de la tête de l'arbre
 Markieren Sie vom Schachtkopf
 Marca desde la cabeza del eje
 Marca da cabeça do eixo
 Segna dalla testa dell'albero

3

4