

Data sheet for SIMOTICS S-1FK7



Figure similar

MLFB-Ordering data

1FK7011-5AK24-1AG3

Client order no. :

Order no. :

Offer no. :

Remarks :

Item no. :

Consignment no. :

Project :

Engineering data		Mechanical data	
Rated speed (100 K)	6000 rpm	Motor type	Permanent-magnet synchronous motor
Number of poles	8	Motor type	Compact
Rated torque (100 K)	0.1 Nm	Shaft height	20
Rated current	0.5 A	Cooling	Natural cooling
Static torque (60 K)	0.15 Nm	Radial runout tolerance	-/-
Static torque (100 K)	0.18 Nm	Concentricity tolerance	-/-
Stall current (60 K)	0.70 A	Axial runout tolerance	-/-
Stall current (100 K)	0.85 A	Vibration severity grade	Grade A
Moment of inertia	0.064 kgcm ²	Connector size	0.5
Efficiency	62.0 %	Degree of protection	IP54
Physical constants		Design acc. to Code I	IM B5 (IM V1, IM V3)
		Temperature monitoring	Pt1000 temperature sensor
Torque constant	0.21 Nm/A	Electrical connectors	Connectors for signals and power rotatable
Voltage constant at 20° C	14.0 V/1000*min ⁻¹	Color of the housing	Standard (Anthracite RAL 7016)
Winding resistance at 20° C	9.40 Ω	Holding brake	without holding brake
Rotating field inductance	13.0 mH	Shaft end	Plain shaft
Electrical time constant	1.40 ms	Encoder system	Encoder IC2048S/R: incremental encoder sin/cos 1 Vpp 2048 S/R with C and D track
Mechanical time constant	4.10 ms		
Thermal time constant	14 min		
Shaft torsional stiffness	1400 Nm/rad		
Net weight of the motor	0.9 kg		

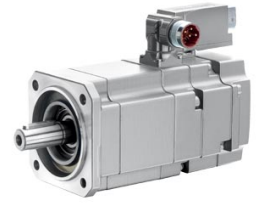


Figure similar

MLFB-Ordering data

1FK7011-5AK24-1AG3

Optimum operating point

Optimum speed	5000 rpm
Optimum power	0.1 kW

Limiting data

Max. permissible speed (mech.)	8000 rpm
Max. permissible speed (inverter)	8000 rpm
Maximum torque	0.5 Nm
Maximum current	2.4 A

Recommended Motor Module

Rated inverter current	1 A
Maximum inverter current	2 A
Maximum torque	0.37 Nm