

Selection and application guide

For use in Indiana

Meter Mounting Equipment

www.talonmetering.com



Meter Mounting Equipment

Table of Contents

| Service | Rating | Positions | Terminals | Page |
|--|--------------------------|-----------|-----------|-------|
| Introduction and General Information | - | - | - | 2-3 |
| Residential, 1 phase, 3 wire | 135A | 1 | 4 & 5 | 4 |
| Residential, 1 phase, 3 wire | 200A | 1 | 4 & 5 | 5 |
| Residential, 1 phase, 3 wire | 200A | 1 | 4 & 5 | 6 |
| Residential, 1 phase, 3 wire, Horizontal Gang | 100A/Position | 2-4 | 4 & 5 | 7 |
| Residential, 1 phase, 3 wire, Horizontal Gang | 200A | 2-6 | 4 & 5 | 8 |
| Commercial/Industrial, 1 phase, 3 wire; 3 phase, 3 wire; 3 phase, 4 wire | 200A | 1 | 4, 5 & 7 | 9 |
| Residential/Commercial/Industrial, 1 phase, 3 wire | 320A cont./ 400A max. | 1 | 4 | 10 |
| Residential/Commercial/Industrial, Type HQ, Heavy Duty Lever Bypass, 1 phase, 3 wire; 3 phase, 3 wire, 4 wire, Wye or Delta | 320A cont./ 400A max. | 1 | 5 & 7 | 11 |
| Residential, Meter Main, 1 phase, 3 wire | 100/200A | 1 | 4 & 5 | 12 |
| Residential, Meter Combination, 1 phase, 3 wire | 200/400A | 1 | 4 | 13 |
| Circuit Breakers | - | - | - | 14 |
| Air Conditioning Disconnects | - | - | - | 15 |
| Spa Panels | - | - | - | 16 |
| Connector lugs | | | | 17-18 |
| Accessories | | | | 19 |
| Terms of Sale, Meter Mounting Device Applications | | | | 20 |

Represented by:

New Century Sales, Inc.
 5684 West 74th Street
 Indianapolis, IN 46278
 Phone: (317) 334-9697
 Fax: (317) 334-9676

www.newcenturysalesinc.com

Meter Mounting Equipment

The standard for quality

For more than 50 years, meter mounting devices that are now manufactured under the Talon Brand, have been known throughout the industry for innovation and quality. From our proprietary K-Base to our heavy duty HQ lever bypass socket, Talon products are known throughout the industry for innovation and quality. Talon meter sockets are built for safety, ease of installation, and long term quality. That's why we use stainless steel hardware, polyester powder coat paint for long lasting protection, and Type G-90 galvanized steel or 3003 grade aluminum for all of our enclosures. It's also why we use an all-copper current path in our commercial sockets. All of this adds up to why utilities, OEM's, and contractors recognize Talon meter mounting devices across the country as the leader in design, quality, and workmanship. Quality is the reason many utilities and electricians specify Talon products.

Talon products - the standard for quality and design.



*HQ-5 block assembly
The standard for quality.*

General information

Materials:

16 gauge, galvanized steel, G-90
14 gauge, galvanized steel, G-90
14 gauge, aluminum
12 gauge, aluminum

Enclosures:

NEMA 3R

Finish:

Steel - Light gray, baked on powder polyester
Aluminum - Mill finish

Latches:

All swing latches are stainless steel

Block material:

AS/AT, MQ, HQ, K-4 and K-7 - Glass reinforced polyester

Terminals:

AS/AT - Tin-plated aluminum extrusions 6061-T6
MQ, HQ, - Tin-plated copper

Standards:

Products cataloged herein meet or exceed the following standards:
UL 486B, UL 414, NEMA 250,
ANSI C12.7 Florida Meter Group requirements

Voltage:

All devices are rated at 600V AC
Type K-4 rated at 300V AC



Meter Mounting Equipment

Meter socket terminology

Maximum and continuous ampacity

UL and NEMA standards allow most electrical devices to be tested at one amp level (“continuous”), then allowed 125% rating as “maximum”. For example, a “400 Amp” socket may either mean 400 Amps continuous (K-4) or 400A Max, 320A continuous which is also made by most competitors.

Wire sizes - ampacity

Connectors accept a fairly wide variety of wire sizes. On the AT socket, a 350 MCM connector accepts conductors from #6 up to 350 MCM. The NEC specifies the ampacity of each wire size and type, also taking into account how the wire is installed in conduit.

Lay-in and stud terminals

Lay-in terminals are fixed and may not be modified in the field to accept other wire sizes or parallel conductors. Stud terminals accept either lugs (see Product Schedule 497) or compression fittings (not available from Talon). Common uses for studs include where the field wiring may be either single or parallel. Terminals may be mixed on the line and load sides, e.g. stud on the line and lay-in on the load side.

Ringless/Ring style

Ring-type is an older, vanishing concept requiring a sealing ring. Talon recently added tooling to build this type of socket for the few remaining utilities that require them. In ringless design, the seal is made not on a sealing ring but using the cover and “swing latch” as the point of sealing.

Overhead/Underground

Sockets for UG service are usually wider in order to provide space for the conductors to loop around the block to the top connectors. Since more material is required in the enclosure, UG sockets are more expensive than OH sockets. Quite popular are combination units (OH/UG) which may be used in either service, and require a cover plate if used with UG feed.

Hubs and cover plates

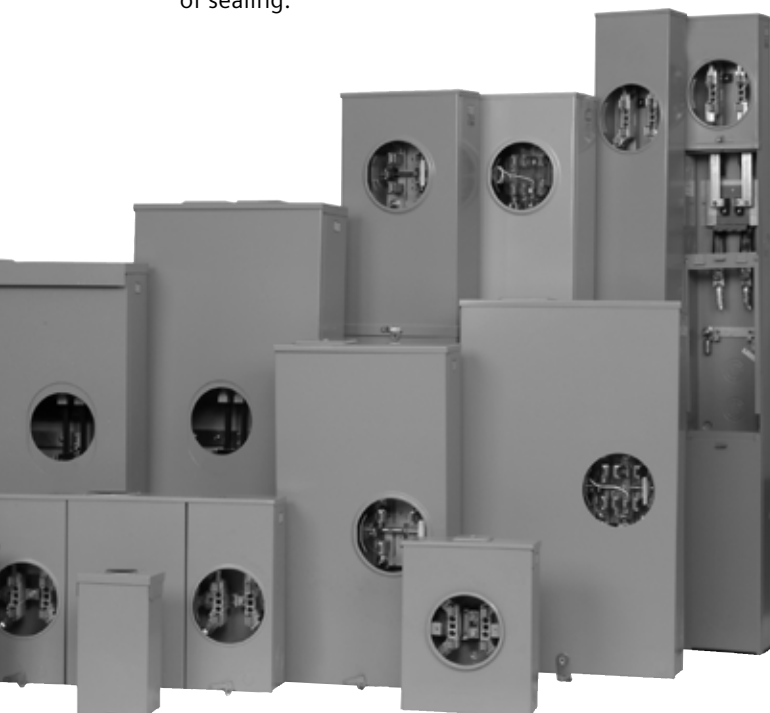
Top of socket with hub opening has a flanged lip to keep out moisture. This requires a hub or cover plate to close. There are two sizes of openings: “small” for conduit hubs with sizes of 1”, 1-1/4”, 1-1/2”, 2”, and 2-1/2”; and “large” for conduit hubs with sizes 3”, 3-1/2”, and 4”. See Product Schedule 499. Talon hub openings conform to ANSI C12.7 specs and are interchangeable with other socket manufacturers, but are not interchangeable with panel board style hubs.

Bypass types

A self-contained meter completes the circuit between the utility and the customer. In order to change the meter, the circuit must be broken, turning off the power to the customer. This is not acceptable in commercial establishments, or in many other types of services. A bypass allows a parallel path for the current flow, unmeasured, while the meter is pulled.

Types are:

- a) Lever-operated jaw release, also known as jaw clamping lever bypass (Talon type HQ). The best, because the meter cannot accidentally be pulled unless the bypass is engaged. Pulling the meter would also be a major safety hazard if there is a 480V installation and/or a large load in place, as the meter would then act as a switch, and cause arc.
- b) Lever-operated non-jaw release (Talon type MQ). Lever bypasses the meter, but the meter may be removed with the bypass open.
- c) Horn bypass (option on residential sockets). Tangs on line and load connectors allow for jumper leads to be fitted over them before the meter is pulled.
- d) Manual bypass (K-4, K-5, K-7) uses separate “links”, which are clamped onto special studs before the meter is removed. K-7 also uses a “rotating link” type bypass.
- e) Other types not made by Talon include: slide links, screw type, and automatic circuit closers.



135A Continuous Meter Mounting Equipment

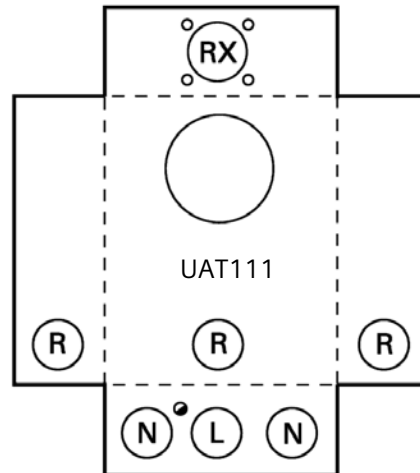
Residential^①, 4 & 5^② terminal for 1 phase, 3 wire

| Cont. amp rating | Service | Connectors Line | Load | Dimensions (in.) | | | Hub opening | Bypass | Catalog number |
|---|---------|-----------------|---------|------------------|------|-----|------------------|--------|--------------------|
| | | | | W | H | D | | | |
| Approved for SIGECO | | | | | | | | | |
| 135 | OH/UG | #14-2/0 | #14-2/0 | 8.0 | 11.7 | 3.6 | RX Opening | None | UAT111-OG |
| 135 | OH/UG | #14-2/0 | #14-2/0 | 8.0 | 11.7 | 3.6 | 1-1/4" hub inst. | None | UAT111-BG |
| Approved for Cinergy, AEP, NIPSCO and SIGECO | | | | | | | | | |
| 135 | OH/UG | #14-2/0 | #14-2/0 | 8.0 | 11.7 | 3.6 | RX Opening | Horn | UAT111-OPQG |
| 135 | OH/UG | #14-2/0 | #14-2/0 | 8.0 | 11.7 | 3.6 | 1-1/4" hub inst. | Horn | UAT111-BPQG |

- ① All units are UL Listed and include a quad neutral
- ② 5th terminal kit for field installation: H659-0121
See accessories page in back.



UAT111-OG



| Knockouts (inches): | |
|---------------------|---------------------------|
| Ø: | 1/4 |
| L: | 1/2, 3/4, 1, 1-1/4, 1-1/2 |
| N: | 3/4, 1, 1-1/4, 1-1/2, 2 |
| R: | 1, 1-1/4, 1-1/2, 2 |
| RX: | Ø2.750 HUB OP |

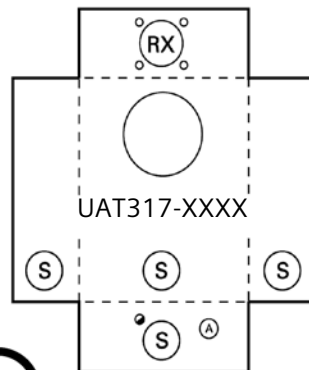
200A Meter Mounting Equipment

Residential^①, 4 & 5^② terminal for 1 phase, 3 wire

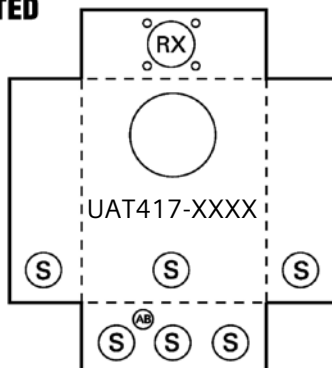
| Cont. amp rating | Service | Connectors Line | Load | Dimensions (in.) | | | Hub opening | Bypass | Catalog number |
|---|---------|-----------------|--------------|------------------|------|-----|--------------|--------|----------------|
| | | | | W | H | D | | | |
| 200 | OH/UG | #6-350 kcmil | #6-350 kcmil | 11.0 | 15.0 | 4.5 | RX Cl. Plate | None | UAT417-XG |
| 200 | UG | #6-350 kcmil | #6-350 kcmil | 11.0 | 15.0 | 4.5 | Blank | None | UAT417-PG |
| Approved for Crawfordsville Electric L&P | | | | | | | | | |
| 200 | OH/UG | #6-350 kcmil | #6-350 kcmil | 11.0 | 15.0 | 4.5 | RX Opening | None | UAT417-0G |
| Approved for AEP, CINERGY, and NIPSCO | | | | | | | | | |
| 200 | OH | #6-350 kcmil | #6-350 kcmil | 8.0 | 15.0 | 4.5 | RX Opening | Horn | UAT317-0PQG |
| Approved for CINERGY and NIPSCO | | | | | | | | | |
| 200 | OH | #6-350 kcmil | #6-350 kcmil | 8.0 | 15.0 | 4.5 | 2" hub inst. | Horn | UAT317-DPQG |
| 200 | OH/UG | #6-350 kcmil | #6-350 kcmil | 11.0 | 15.0 | 4.5 | RX Cl. Plate | Horn | UAT417-XPQG |
| 200 | UG | #6-350 kcmil | #6-350 kcmil | 11.0 | 15.0 | 4.5 | Blank | Horn | UAT417-PPQG |
| 200 | OH/UG | #6-350 kcmil | #6-350 kcmil | 11.0 | 15.0 | 4.5 | RX Opening | Horn | UAT417-0PQG |
| Approved for NIPSCO | | | | | | | | | |
| 200 | OH | #6-350 kcmil | #6-350 kcmil | 8.0 | 15.0 | 4.5 | RX Opening | None | UAT317-0G |
| 200 | OH | #6-350 kcmil | #6-350 kcmil | 8.0 | 15.0 | 4.5 | 2" hub inst. | None | UAT317-DG |

- ① All units are UL Listed and include a quad neutral
- ② 5th terminal kit for field installation: H659-0121
See accessories page in back.

| Knockouts (inches): | |
|---------------------|---------------------------|
| ○: | 1/4 |
| A: | 1/2 |
| S: | 1, 1-1/4, 1-1/2, 2, 2-1/2 |
| AB: | 1/4, 1/2, 7/8 |
| RX: | Ø2.750 HUB OP |



UAT317-0PQG



UAT417-XPQG

200A Meter Mounting Equipment

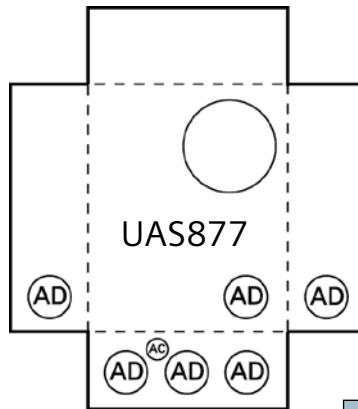
Residential^①, 4 or 5^② terminal for 1 phase, 3 wire

| Cont. amp rating | Service | Connectors | | Dimensions (in.) | | | Hub opening | Bypass | Meter Opening | No. of term. | Catalog number |
|-------------------------|---------|--------------|--------------|------------------|------|-----|--------------|--------|---------------|--------------|---------------------------------|
| | | Line | Load | W | H | D | | | | | |
| 200 | UG | #6-350 kcmil | #6-350 kcmil | 13.0 | 14.0 | 4.5 | Blank | Horn | Left | 4 | UAS817-PPZA ^③ |
| Approved for AEP | | | | | | | | | | | |
| 200 | UG | #6-350 kcmil | #6-350 kcmil | 13.0 | 14.0 | 4.5 | Blank | Horn | Right | 4 | UAS877-PPZA ^③ |
| 200 | UG | #6-350 kcmil | #6-350 kcmil | 13.0 | 14.0 | 4.5 | RX Cl. Plate | Horn | Right | 4 | UAS837-XPG ^④ |

- ① All units are UL Listed
- ② 5th terminal kit for field installation: H659-0121
- ③ 7/16" barrel lock KO with bracket installed
- ④ Aluminum enclosure
See accessories page in back.



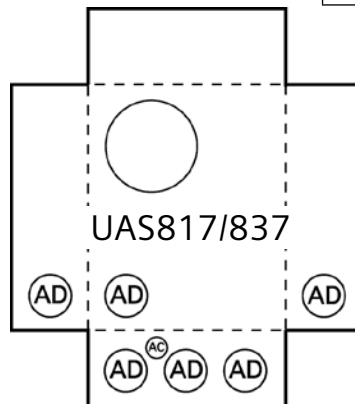
UAS877-PPZA



| Knockouts (inches): | |
|---------------------|---------------------------|
| S: | 1, 1-1/4, 1-1/2, 2, 2-1/2 |
| AB: | 1/4, 1/2, 7/8 |
| AC: | 1/4, 1/2 |
| AD: | 1-1/4, 1-1/2, 2, 2-1/2, 3 |
| RX: | Ø2.750 HUB OP |



UAS817-PPZA



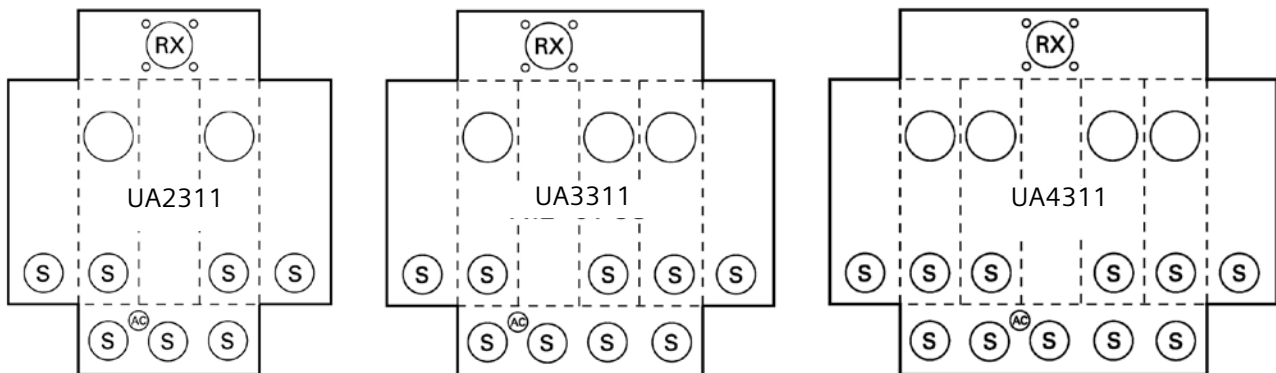
100A/Position Meter Mounting Equipment

Residential^{①②③⑤}, Horizontal Gang, 4 & 5 terminal for 1 phase, 3 wire

| No. pos. | Cont. amp rating | Overall amp. | Connectors Line | Load | Bypass | Dimensions (in.) | | | Hub opening | No. of term. | Catalog number |
|--|------------------|--------------|-----------------|---------|--------|------------------|------|-----|-------------|--------------|--------------------------|
| W | H | D | | | | | | | | | |
| Approved for SIGECO and CINERGY | | | | | | | | | | | |
| 2 | 100 | 100 | #6-350 kcmil | #14-2/0 | None | 24.0 | 12.0 | 4.5 | RX Opening | 4 | UA2311-0G ^④ |
| Approved for CINERGY, NIPSCO, and SIGECO | | | | | | | | | | | |
| 2 | 100 | 100 | #6-350 kcmil | #14-2/0 | Horn | 24.0 | 12.0 | 4.5 | RX Opening | 4 | UA2311-0PQG ^③ |
| 3 | 100 | 135 | #6-350 kcmil | #14-2/0 | Horn | 32.0 | 12.0 | 4.5 | RX Opening | 4 | UA3311-0PQG ^③ |
| 4 | 100 | 180 | #6-350 kcmil | #14-2/0 | Horn | 40.0 | 12.0 | 4.5 | RX Opening | 4 | UA4311-0PQG ^③ |

- ① All units are equipped with a ground lug
- ② All sockets are suitable for either overhead or underground feed
- ③ Devices come with (2) ground lugs
- ④ 7/16" barrel lock KO, no bracket
- ⑤ 5th terminal kit for field installation: H659-0121
See accessories page in back.

| Knockouts (inches): | |
|---------------------|---------------------------|
| S: | 1, 1-1/4, 1-1/2, 2, 2-1/2 |
| AC: | 1/4, 1/2 |
| RX: | Ø2.750 HUB OP |



UA2311-0PQG

200A/Position Meter Mounting Equipment

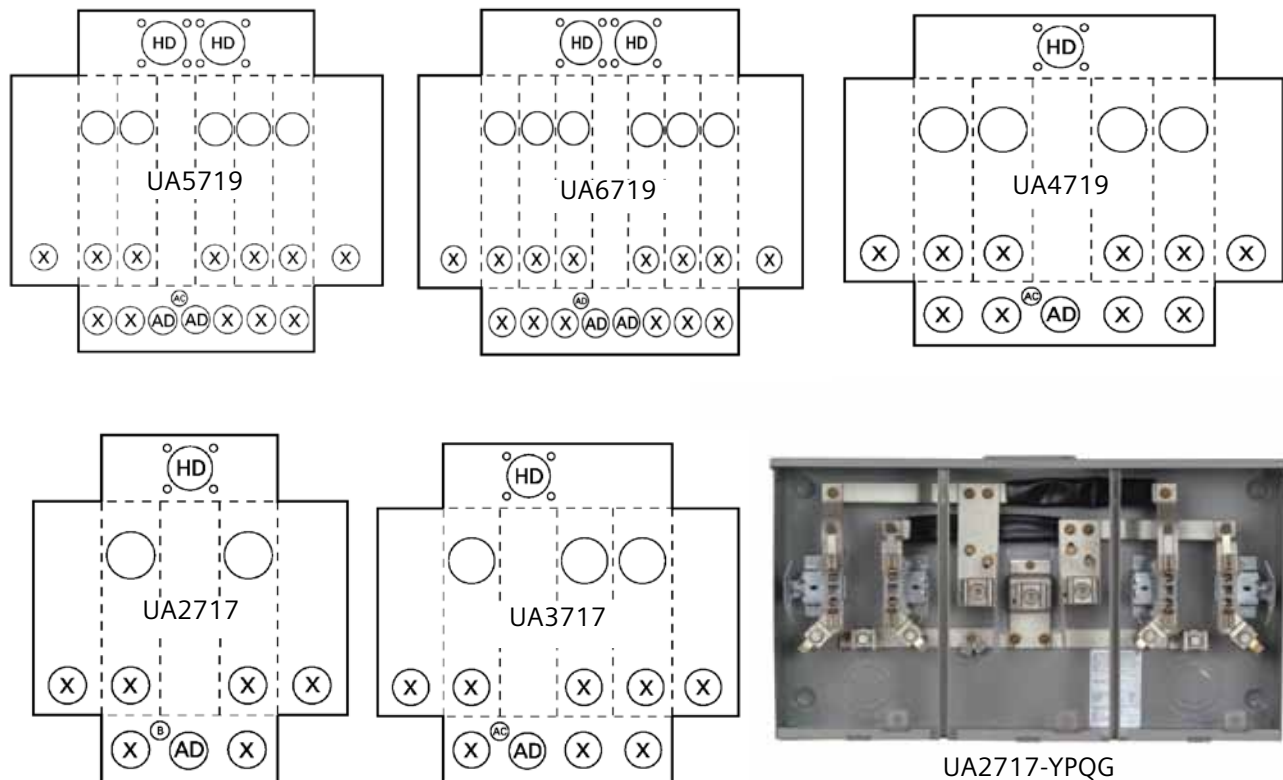
Residential^{①②③}, Horizontal Gang, 4 & 5 terminal for 1 phase, 3 wire

| No. pos. | Cont. amp rating | Connectors Line | Load | Bypass | Dimensions (in.) | | | Hub opening | Catalog number |
|---|------------------|-------------------|--------------|--------|------------------|------|------|-----------------|--------------------------|
| | | | | | W | H | D | | |
| Approved for SIGECO and NIPSCO | | | | | | | | | |
| 2 | 200 | #6-350 kcmil | #6-350 kcmil | None | 24.0 | 14.5 | 5.12 | HD Opening | UA2717-YG |
| Approved for AEP, CINERGY, NIPSCO, and SIGECO | | | | | | | | | |
| 2 | 200 | #6-350 kcmil | #6-350 kcmil | Horn | 24.0 | 14.5 | 5.12 | HD Opening | UA2717-YPQG ^④ |
| 3 | 200 | 1/0-600 kcmil | #6-350 kcmil | Horn | 32.0 | 14.5 | 5.12 | HD Opening | UA3717-YPQG ^④ |
| 4 | 200 | (2) 1/0-600 kcmil | #6-350 kcmil | Horn | 43.0 | 14.5 | 5.12 | HD Opening | UA4719-YPQG ^④ |
| 5 | 200 | (2) 1/0-600 kcmil | #6-350 kcmil | Horn | 51.0 | 14.5 | 5.12 | (2) HD Openings | UA5719-KPQG ^④ |
| 6 | 200 | (2)1/0-600 kcmil | #6-350 kcmil | Horn | 59.0 | 14.5 | 5.12 | (2) HD Openings | UA6719-KPQG ^④ |

- ① All units are UL Listed and are equipped with a ground lug
- ② All sockets are suitable for either overhead or underground feed
- ③ 5th terminal kit for field installation: H659-0121
- ④ Devices come with (2) ground lugs
See accessories page in back.



| Knockouts (inches): | |
|---------------------|---------------------------|
| X: | 1-1/4, 1-1/2, 2, 2-1/2 |
| AC: | 1/4, 1/2 |
| AD: | 1-1/4, 1-1/2, 2, 2-1/2, 3 |
| HD: | Ø4.281 HUB OP |



UA2717-YPQG

200A Meter Mounting Equipment

Commercial/Industrial^{①②③}, Type HQ, 4 terminal for 1 phase, 3 wire;
5 terminal for 1 & 3 phase, 3 wire^④; 7 terminal for 3 phase, 4 wire

| Cont. amp rating | Service | Connectors | No. of term. | Dimensions (in.) | | | Hub opening | Catalog number |
|---|---------|----------------|--------------|------------------|------|-----|--------------|---------------------------|
| | | | | W | H | D | | |
| 200 | OH/UG | #6 - 350 kcmil | 4 | 13.0 | 19.0 | 5.2 | RX Cl. Plate | 40404-025 |
| 200 | OH | #6 - 350 kcmil | 7 | 10.0 | 17.0 | 5.2 | RX Opening | 40007-01GP ^⑦ |
| Approved for AEP and CINERGY | | | | | | | | |
| 200 | OH/UG | #6 - 350 kcmil | 5 | 13.0 | 19.0 | 5.2 | RX Cl. Plate | 40405-025 ^{④⑥} |
| Approved for AEP, CINERGY, NIPSCO and SIGECO | | | | | | | | |
| 200 | OH/UG | #6 - 350 kcmil | 7 | 13.0 | 19.0 | 5.2 | RX Cl. Plate | 40407-025 |
| Approved for CINERGY and NIPSCO | | | | | | | | |
| 200 | OH | #6 - 350 kcmil | 4 | 10.0 | 17.0 | 5.2 | RX Opening | 40804-01QG ^⑧ |
| Approved for CINERGY | | | | | | | | |
| 200 | OH/UG | #6 - 350 kcmil | 4 | 13.0 | 19.0 | 5.2 | RX Cl. Plate | 40404-02QG ^⑧ |
| 200 | OH/UG | 3/8-24 Studs | 4 | 13.0 | 19.0 | 5.2 | RX Cl. Plate | 42504-025 ^⑤ |
| 200 | OH | #6 - 350 kcmil | 7 | 10.0 | 17.0 | 5.2 | RX Opening | 40007-01 |
| Approved for CINERGY, NIPSCO and SIGECO | | | | | | | | |
| 200 | OH/UG | #6 - 350 kcmil | 5 | 10.0 | 17.0 | 5.2 | RX Opening | 40005-01QG ^{④⑥⑧} |
| 200 | OH | #6 - 350 kcmil | 5 | 13.0 | 19.0 | 5.2 | RX Cl. Plate | 40405-02QG ^{④⑥⑧} |
| 200 | OH/UG | #6 - 350 kcmil | 7 | 10.0 | 17.0 | 5.2 | RX Opening | 40007-01QG ^⑧ |
| 200 | OH | #6 - 350 kcmil | 7 | 13.0 | 19.0 | 5.2 | RX Cl. Plate | 40407-02QG ^⑧ |

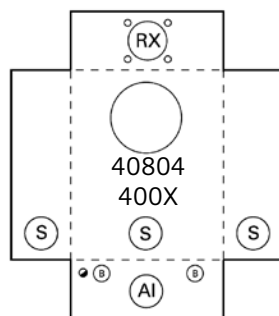
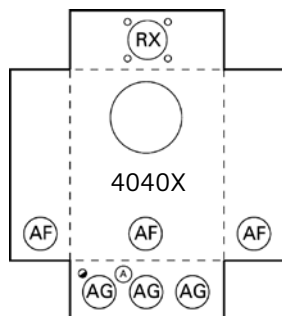
- ① All units are UL Listed
 - ② Bypass mechanism is lever-operated, jaw pressure release with 100% bypass capacity
 - ③ Disconnect sleeves should not be used with this device
 - ④ These units are not for use with 3 phase, 4 wire service. For 3 wire service only. 5th terminal is in the 6 o'clock position
 - ⑤ Recommended lugs for 42504-025 are: H55890, single 350 kcmil or H58022, parallel 250 kcmil
 - ⑥ Neutral must be isolated for 3 phase, 3 wire service
 - ⑦ 7/8" barrel lock KO with bracket installed
 - ⑧ Devices come with (2) ground lugs.
- See accessories page in back.



40407-025



40405-025



| Knockouts (inches): | |
|---------------------|-----------------------------------|
| ●: | 1/4 |
| A: | 1/2 |
| B: | 1/2, 3/4 |
| S: | 1, 1-1/4, 1-1/2, 2, 2-1/2 |
| AF: | 1, 1-1/2, 2, 2-1/2, 3 |
| AG: | 3/4, 1, 1-1/4, 1-1/2, 2, 2-1/2, 3 |
| AI: | 1, 1-1/4, 1-1/2, 2, 2-1/2, 3 |
| RX: | ∅2.750 HUB OP |

320A cont./400A max. Meter Mounting Equipment

Residential/Commercial/Industrial^{①②③}, Type HQ, 4 terminal for 1 phase, 3 wire

| Amp rating Cont./Max. | Service | No. of term. | Connectors Line | Load | Dimensions (in.) | | | Hub opening | Catalog number |
|---|---------|-----------------|-------------------------------------|-------------------------------------|------------------|------|-----|----------------|------------------------------------|
| | | | | | W | H | D | | |
| 320/400 | OH/UG | 4 | 3/8 - 24 Stud | 3/8 - 24 Stud | 16.0 | 31.0 | 5.0 | HD Cl. Plate | 48104-82WI ^⑤ |
| 320/400 | UG | 4 | #4-600 kcmil or (2) #4-250 kcmil | (2) #4-250 kcmil | 12.8 | 28.0 | 5.0 | Blank | 48504-846 |
| Approved for AEP, CINERGY, NIPSCO and SIGECO | | | | | | | | | |
| 320/400 | UG | 4 | 3/8 - 24 Stud | 3/8 - 24 Stud | 16.0 | 31.0 | 5.0 | HD Cl. Plate | 48104-02 |
| Approved for CINERGY | | | | | | | | | |
| 320/400 | OH/UG | 4 | 3/8 - 24 Stud | 3/8 - 24 Stud | 12.8 | 28.0 | 5.0 | HD Cl. Plate | 47604-02QG ^④ |
| 320/400 | UG | 4 | 3/8 - 24 Stud | 3/8 - 24 Stud | 12.8 | 28.0 | 5.0 | Blank | 48504-92 |
| 320/400 | OH/UG | 7 | #4-600 kcmil or (2) #4-250 kcmil | #4-600 kcmil or (2) #4-250 kcmil | 20.0 | 34.0 | 6.0 | HD Cl. Plate | 48704-82GP ^{⑤⑥} |
| Approved for NIPSCO | | | | | | | | | |
| 320/400 | OH | 4 | 3/8 - 24 Stud | 3/8 - 24 Stud | 12.6 | 28.0 | 5.0 | HD Opening | 47604-01NI ^⑤ |

- ① All units are UL Listed, and are supplied with ground lugs
- ② Bypass mechanism is lever-operated, jaw pressure release with 100% bypass capacity
- ③ Disconnect sleeves should not be used with this device
- ④ Sockets with "QG" suffix are supplied with two ground lugs
- ⑤ Devices have an anti-inversion clip H59676 inserted in the upper right-hand jaw
This clip allows only a 320A meter to be used with these devices. This is a requirement of NIPSCO
- ⑥ 7/8" barrel lock KO with bracket included.
See accessories page in back.



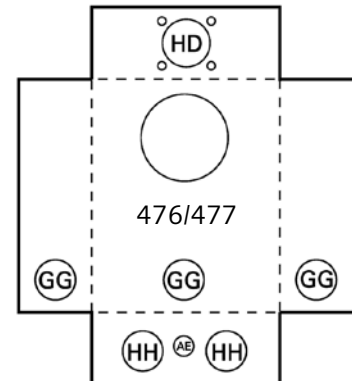
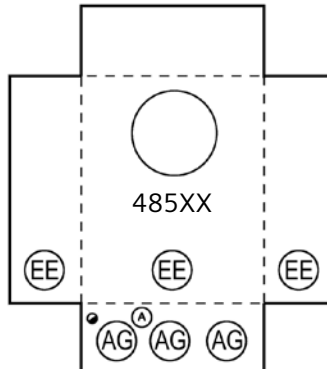
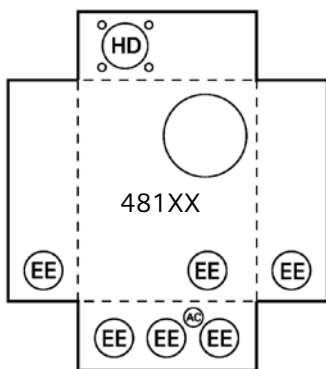
48104-02
(Lugs not included)



48504-92



| Knockouts (inches): | |
|---------------------|-----------------------------------|
| Ø: | 1/4 |
| A: | 1/2 |
| Z: | 1-1/2, 2, 2-1/2 |
| EE: | 1/2, 3/4 |
| GG: | 2-1/2, 3, 3-1.2 |
| HH: | 2-1/2, 3, 3-1/2, 4 |
| AC: | 1/4, 1/2 |
| AE: | 1/4, 1/2, 3/4, 1, 1-1/4 |
| AG: | 3/4, 1, 1-1/4, 1-1/2, 2, 2-1/2, 3 |
| HD: | Ø4.281 HUB OP |



320A cont./400A max. Meter Mounting Equipment

Residential/Commercial/Industrial^{①②③}, Type HQ, Heavy duty, 5 terminal for 1 phase, 3 wire; 7 terminal for 4 wire, Wye, or Delta

| Amp rating cont./max. | Service | No. of term. | Connectors | | Dimensions (in.) | | | Hub opening | Catalog number |
|--|---------|--------------|----------------------------------|----------------------------------|------------------|------|-----|--------------|--------------------------|
| | | | Line | Load | W | H | D | | |
| 320/400 | OH/UG | 5 | 1/2 - 20 Stud | 1/2 - 20 Stud | 14.0 | 28.0 | 6.0 | HD Opening | 47705-01FL ^④ |
| 320/400 | OH/UG | 5 | 1/2 - 20 Stud | 1/2 - 20 Stud | 14.0 | 28.0 | 6.0 | HD Cl. Plate | 47705-02 ^④ |
| 320/400 | OH/UG | 7 | 1/2 - 20 Stud | 1/2 - 20 Stud | 14.0 | 28.0 | 6.0 | HD Opening | 47707-01FL ^⑤ |
| Approved for AEP | | | | | | | | | |
| 320/400 | OH/UG | 7 | 3/8-24 Stud | 3/8-24 Stud | 20.0 | 34.0 | 6.0 | HD Cl. Plate | 48707-02 ^{⑤⑧} |
| 320/400 | OH/UG | 7 | #4-600 kcmil or (2) #4-250 kcmil | (2) #6-250 kcmil | 20.0 | 34.0 | 6.0 | HD Cl. Plate | 48907-82 ^⑥ |
| 320/400 | OH/UG | 5 | #4-600 kcmil or (2) #4-250 kcmil | (2) #4-350 kcmil | 16.0 | 31.0 | 5.0 | HD Cl. Plate | 49505-82 |
| Approved for CINERGY | | | | | | | | | |
| 320/400 | OH/UG | 7 | 3/8-24 Stud | 3/8-24 Stud | 20.0 | 34.0 | 6.0 | HD Opening | 40107-02DU ^⑨ |
| Approved for CINERGY and SIGECO | | | | | | | | | |
| 320/400 | OH/UG | 7 | 1/2 - 20 Stud | 1/2 - 20 Stud | 14.0 | 28.0 | 6.0 | HD Cl. Plate | 47707-02 |
| Approved for NIPSCO | | | | | | | | | |
| 320/400 | OH/UG | 7 | 1/2 - 20 Stud | 1/2 - 20 Stud | 20.0 | 34.0 | 6.0 | HD Cl. Plate | 44707-02 |
| 320/400 | OH/UG | 7 | #4-600 kcmil or (2) #4-250 kcmil | #4-600 kcmil or (2) #4-250 kcmil | 20.0 | 34.0 | 6.0 | HD Cl. Plate | 48707-82GP ^{⑦⑧} |

- ① All units are UL Listed, and are supplied with ground lug
- ② Bypass mechanism is lever-operated, jaw pressure release with 100% bypass capacity
- ③ Disconnect sleeves should not be used with this device
- ④ Recommended lugs for catalog number 47705 are H61300
- ⑤ Recommended lugs for catalog number 47707 are H60162
- ⑥ Aluminum enclosure
- ⑦ Devices have an anti-inversion clip H59676 inserted in the upper right-hand jaw. This clip allows only a 320A meter to be used with these devices. This is a requirement of NIPSCO
- ⑧ 7/8" barrel lock KO with bracket installed
- ⑨ Offset design - no bussing. HQS block. See accessories page in back.

Residential/Commercial/Industrial - 320A - Type HQ



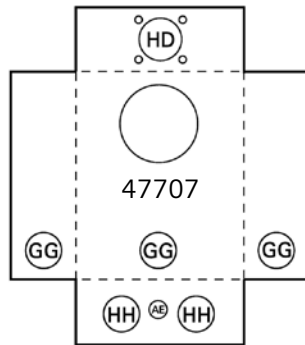
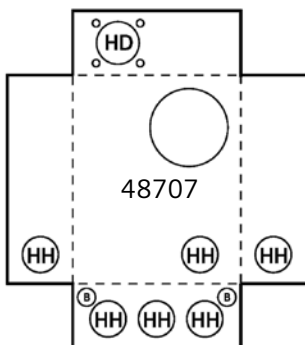
47705-02



47707-01FL



48707-02
(Lugs not included)



| Knockouts (inches): | |
|---------------------|-------------------------|
| B: | 1/2, 3/4 |
| GG: | 2-1/2, 3, 3-1/2 |
| HH: | 2-1/2, 3, 3-1/2, 4 |
| AE: | 1/4, 1/2, 3/4, 1, 1-1/4 |
| HD: | Ø4.281 HUB OP |

100/200A Meter Mounting Equipment

Residential^①, Meter Main
4 and 5 terminal for 1 phase, 3 wire

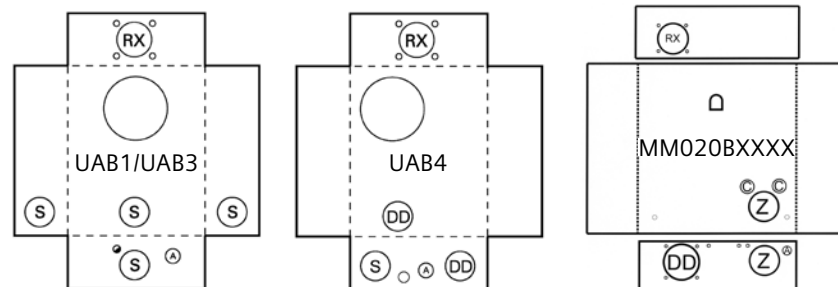
| Rating | Service | Connectors Line | Load | Dimensions (in.) W H D | | | Hub opening | Main breaker | No. term. | Bypass | Cover style | Catalog number |
|----------------------------|---------|--------------------|--------------------------|---------------------------|------|-----|-----------------|-----------------------|--------------|--------|----------------|------------------------------------|
| 100 | OH | #14-2/0 | #6-350 kcmil | 8.0 | 28.5 | 4.5 | RX Opening | 125A Prov. | 4 | Horn | Ringless | UAB111-0PCH ^{③④} |
| 125 | OH/UG | #14-2/0 | See breaker rating | 10.8 | 20.8 | 4.4 | RX Cl. Plate | 125A Prov. | 4 | None | Ringless | UAB111-XG ^⑥ |
| 100 | OH/UG | #14-2/0 | See breaker rating | 10.8 | 20.8 | 4.4 | RX Cl. Plate | 100A Inst. | 4 | None | Ringless | UAB111-100 ^⑥ |
| 125 | OH/UG | #14-2/0 | See breaker rating | 10.8 | 20.8 | 4.4 | RX Cl. Plate | 125A Inst. | 4 | None | Ringless | UAB111-125 ^⑥ |
| 200 | OH | #6-250 kcmil | See breaker rating | 8.0 | 28.5 | 4.5 | RX Opening | 200A Inst. | 4 | Horn | Ringless | UAB317-0PCH ^{③⑤} |
| 200 | OH/UG | #6-250 kcmil | See breaker rating | 11.6 | 28.8 | 5.2 | RX Cl. Plate | 150= 200A Prov. | 4 | None | Ringless | UAB417-XPG ^⑥ |
| 150 | OH/UG | #6-350 kcmil | #6-350 kcmil | 11.6 | 28.8 | 5.2 | RX Cl. Plate | 150A Inst. | 4 | None | Ringless | UAB417-150 ^⑥ |
| 200 | OH/UG | #6-350 kcmil | #6-350 kcmil | 11.6 | 28.8 | 5.2 | RX Cl. Plate | 200A Inst. | 4 | None | Ringless | UAB417-200 ^⑥ |
| Approved for NIPSCO | | | | | | | | | | | | |
| 125 | OH/UG | #6-350 kcmil | #2-1/0 CU, 2/0 AL | 18.5 | 17.0 | 5.1 | RX Cl. Plate | 125A Inst. | 5 | Horn | Ringless | LGMM0202B1125RJBX ^{②⑤} |
| 150 | OH/UG | #6-350 kcmil | #1-300 kcmil | 18.5 | 17.0 | 5.1 | RX Cl. Plate | 150A Inst. | 5 | Horn | Ringless | LGMM0202B1150RJBX ^{②⑤} |
| 200 | OH/UG | #6-350 kcmil | #1-300 kcmil | 18.5 | 17.0 | 5.1 | RX Cl. Plate | 200A Inst. | 5 | Horn | Ringless | LGMM0202B1200RJBX ^{②⑤} |

- ① All units are UL Listed
- ② 5th terminal factory installed
- ③ 5th terminal for field installation: H659-0121
- ④ UAB111-0PCH has a provision for a 125 amp max circuit breaker. See breaker table for details
- ⑤ Breaker factory installed
See breaker table for replacement circuit breakers.
- ⑥ 5th terminal for field installation: EC5J2.

| Breaker table | |
|---------------|-----------------|
| Amps | Circuit breaker |
| 100 | Q2100 |
| 125 | Q2125 |
| 150 | QN2150 |
| 200 | QN2200 |
| UAB317 | |
| 200 | QJ22B200 |



| Knockouts (inches): | |
|---------------------|---------------------------|
| ●: | 1/4 |
| A: | 1/2 |
| C: | 1/2, 3/4, 1 |
| S: | 1, 1-1/4, 1-1/2, 2, 2-1/2 |
| Z: | 1-1/2, 2, 2-1/2 |
| DD: | 1-1/4, 1-1/2, 2, 2-1/2, 3 |
| RX: | ∅2.750 HUB OP |



200/400A Meter Mounting Equipment

Residential, Meter Combination,
4 terminal for 1 phase, 3 wire

| Rating | Service | Dimensions (in.) | | | Hub opening | Main breaker | No. term. | Bypass | Cover style | Catalog number |
|-------------------------|---------|------------------|------|-----|--------------|---|-----------|--------|-------------|-----------------------------|
| | | W | H | D | | | | | | |
| 200 | OH/UG | 30.0 | 14.0 | 5.0 | RX Cl. Plate | 200A Inst. | 4 | None | Ringless | LG0408B1200RT ^① |
| 200 | OH/UG | 32.0 | 14.0 | 5.0 | RX Cl. Plate | 200A Inst. | 4 | None | Ringless | LG0816B1200RCT ^① |
| 200 | OH/UG | 27.0 | 14.0 | 5.0 | RX Cl. Plate | None | 4 | None | Ringless | LG0606L1200R ^① |
| 200 | OH/UG | 27.0 | 14.0 | 5.0 | RX Cl. Plate | None | 4 | None | Ringless | LG0606L1200RA* ^① |
| Approved for AEP | | | | | | | | | | |
| 400 | OH | 29.0 | 27.0 | 6.0 | HD Cl. Plate | None | 4 | Lever | Ringless | LG0404L1400RLM ^② |
| 400 | OH | 29.0 | 27.0 | 6.0 | HD Cl. Plate | 200A Inst. space for one more 200A main | 4 | Lever | Ringless | LG0816B1400RLT ^② |

*Aluminum enclosure

① 5th jaw available - EC5J2

② 5th jaw available - H35815-2



LG0408B1200RT
4 space, 8 circuit
feed thru lugs



LG0816B1200RCT
8 space, 16 circuit
feed thru lugs



LG0606L1200R
12 space, 16 circuit
LG0606L1200RA
2 or 4 pole breakers only



LG0404L1400RLM
Accepts 2 main breakers 60-200A each



LG0816B1400RLT
8 space, 10 circuit feed thru lugs

Circuit Breakers

Features

- Plug in
- UL listed for use with Talon branded meter combinations
- 1" Frame



Single Pole



Double Pole



4-Pole



| Description | Amps | Catalog number |
|-----------------|------|----------------|
| 1-Pole 120V | 15 | L115 |
| 1-Pole 120V | 20 | L120 |
| 2-Pole 120/240V | 20 | L220 |
| 2-Pole 120/240V | 30 | L230 |
| 2-Pole 120/240V | 40 | L240 |
| 2-Pole 120/240V | 50 | L250 |
| 2-Pole 120/240V | 60 | L260 |
| 2-Pole 120/240V | 100 | L2100 |
| 2-Pole 120/240V | 125 | L2125 |
| 4-Pole 120/240V | 150 | LN2150R |
| 4-Pole 120/240V | 200 | LN2200R |

| Accessories | Catalog number |
|-------------------------------------|----------------|
| Single Pole Padlocking Device | ECPLD1 |
| Double Pole Padlocking Device | ECPLD2 |
| 4-Pole Padlocking Device | ECPQLN3 |
| Handle Blocking Device (1 & 2 Pole) | ECQL1 |

Air Conditioning Disconnects

Fused and Non-fused

Features:

Flexibility

- 30-60 amperes
- 240 volts A.C.
- Padlock provisions
- Horsepower rated
- 10,000 A.I.C.
- New models available with internal GFCI receptacle
- Removable door
- Ample wiring space

Rugged Durability

- Noryl® thermoplastic and powder coated G90 steel enclosures are corrosion resistant and extremely durable giving long maintenance free service
- Copper conductors
- Raised mounting embosses

Steel AC Disconnects

| Ampere rating | Disconnect type | Catalog number | Horse power rating | Dimensions (inches) | | |
|---------------|----------------------|----------------|--------------------|---------------------|-----|-----|
| | | | | H | W | D |
| 30 | Fused pullout | LF2030 | 3 | 7.3 | 5.0 | 2.1 |
| 60 | Fused pullout | LF2060 | 10 | 8.0 | 5.0 | 2.1 |
| 60 | Non-fused pullout | LN2060 | 10 | 7.3 | 5.0 | 2.1 |
| 60 | Non-automatic switch | LNAS2060 | 10 | 7.3 | 5.0 | 2.1 |

Plastic AC Disconnects

| Ampere rating | Disconnect type | Catalog number | Horse power rating | Dimensions (inches) | | |
|---------------|-------------------|----------------|--------------------|---------------------|-----|-----|
| | | | | H | W | D |
| 30 | Fused pullout | LF2030PL | 3 | 8.0 | 5.3 | 3.1 |
| 60 | Fused pullout | LF2060PL | 10 | 8.0 | 5.3 | 3.1 |
| 60 | Non-fused pullout | LN2060PL | 10 | 7.3 | 5.0 | 2.1 |
| 60 | Non-fused pullout | LN2060PLX | 10 | 8.0 | 6.0 | 5.8 |

Steel AC Disconnects with 15 Amp GFCI Receptacle

| Ampere rating | Disconnect type | Catalog number | Horse power rating | Dimensions (inches) | | |
|---------------|----------------------|----------------|--------------------|---------------------|-----|-----|
| | | | | H | W | D |
| 30 | Fused pullout | LF2030GFCI | 3 | 9.0 | 6.1 | 5.1 |
| 60 | Fused pullout | LF2060GFCI | 10 | 9.0 | 6.1 | 5.1 |
| 60 | Non-fused pullout | LN2060GFCI | 10 | 7.1 | 5.8 | 5.1 |
| 60 | Non-automatic switch | LNAS2060GFCI | 10 | 7.1 | 5.8 | 5.1 |

Wire Range Table

| Connector | Copper | | Aluminum | |
|--------------|--------|----------|----------|----------|
| | Solid | Stranded | Solid | Stranded |
| Line | #14-8 | #14-3 | #12-8 | #12-3 |
| Load | #14-8 | #14-3 | #12-8 | #12-3 |
| Neutral | #12-8 | #12-2 | #12-8 | #12-2 |
| Equip. grnd. | #12-8 | #12-2 | #12-8 | #12-2 |



Spa Panels

For use as spa/hot tub service disconnect

Features:

- UL Listed
- Factory installed, 2-pole 50A or 60A GFCI breaker for 240V ground fault protection
- NEMA Type 3R outdoor enclosure
- 2 extra spaces (4 circuits maximum) for additional circuit breakers
- 125 Amp rated interior
- Factory installed 5 position ground bar
- Closure plate included
- Compact enclosure size
- Convenient standard package of 1
- Uses reliable Siemens circuit breakers

| 2-Pole GFCI breaker | Dimensions (inches) | | | Catalog number |
|------------------------|---------------------|-----|-----|-------------------|
| | H | W | D | |
| 50A | 12.3 | 6.0 | 4.5 | LGSPA50 |
| 60A | 12.3 | 6.0 | 4.5 | LGSPA60 |



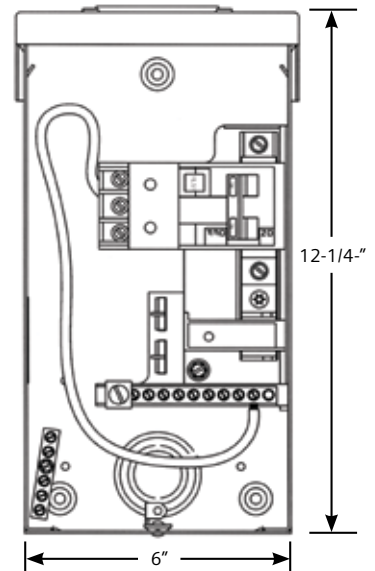
dead front



enclosure



hub cover plate
included



Connector Lugs

| | | | | | | | |
|---|--------------|---|--------------|--|--------------|---|--------------|
| H55890 #6-350 kcmil | 3/8" Stud | H55890-1 #6-350 kcmil | 3/8" Stud | H56734 #6-250 kcmil | 1/2" Stud | H37892 #4-500 kcmil | 1/2" Stud |
|  | |  | |  | |  | |
| H57606-K #6-350 kcmil | 3/8" Stud | H56476 #3/0-800 kcmil | 1/2" Stud | H60162 (1) #4-600 kcmil [or] (2) #1/0-250 kcmil | 1/2" Stud | H61300 (1) #4-600 kcmil [or] (2) #1/0-250 kcmil | 1/2" Stud |
|  | |  | |  | |  | |
| H58022 (2) #6-250 kcmil | 3/8" Stud | H56732 (2) #4-350 kcmil | 1/2" Stud | H56732-1 (2) #4-350 kcmil | 1/2" Stud | H56732-2 (2) #4-350 kcmil | 3/8" Stud |
|  | |  | |  | |  | |
| H56732-M (2) #4-500 kcmil | 1/2" Stud | H68752-1 (3) #6-250 kcmil | 1/2" Stud | H56426 (4) #6-350 kcmil | 1/2" Stud | H56477 #3/0-800 kcmil | 1/2" Stud |
|  | |  | |  | |  | |
| H56425 (2) #6-350 kcmil | 1/2" Stud | H56425-M (2) #4-500 kcmil | 1/2" Stud | H58852 #3/0-800 kcmil | 1/2" Stud | H56733 #3/0-800 kcmil | 1/2" Stud |
|  | |  | |  | |  | |
| H56427 (2) #6-350 kcmil | 1/2" Stud | H56427-M (2) #4-500 kcmil | 1/2" Stud | H58853 (2) #6-350 kcmil | 1/2" Stud | H59299-1 | 1/2" Stud |
|  | |  | |  | |  | |

Connector Lugs

Pressure type lugs for Talon's stud type meter mounting devices are made of 6061-T6 aluminum to provide high strength and high conductivity. All lugs are tin-plated to ensure low contact resistance and to reduce corrosion.

Allen or hex head pressure screws are furnished to provide excellent conductor spread for maximum binding action with the lug. All Talon lugs are listed with Underwriters Laboratories.

Pressure lug connectors for meter mounting devices

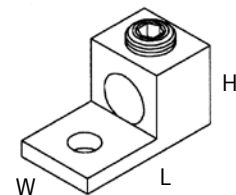
| Device type | Conductor size | Stud opening | Pressure screw head | Dimensions* (inches) | | | Anti-rotation feature | Catalog number |
|-------------------------|---|--------------|---------------------|----------------------|---------|---------|-----------------------|----------------|
| | | | | L | W | H | | |
| | #6-350 kcmil | 13/32" | 9/16" Hex | 2-1/4 | 1-1/8 | 1-1/4 | No | H55890 |
| HQ-4S | #6-350 kcmil | 13/32" | 5/16" Allen | 2-1/4 | 1-1/8 | 1-1/4 | No | H55890-1 |
| HQ-5 S | #6-350 kcmil | 13/32" | 3/8" Allen | 2-1/4 | 1-1/8 | 1-1/4 | No | H57606-K |
| HQ-7S | (2) #6-250 kcmil | 13/32" | 5/16" Allen | 2-3/16 | 1-5/8 | 1-3/16 | No | H58022 |
| HQ-4D | #4-500 kcmil | 9/16" | 3/8" Allen | 2-13/16 | 1-1/2 | 1-9/16 | No | H37892 |
| HQ-5DM HQ-7D, HQ-7DF | (1) #4-600 kcmil or (2) #1/0-250 kcmil | 9/16" | 1/2" Allen | 2-13/16 | 1-3/8 | 1-13/16 | Yes | H60162 |
| | | | | | | | No | H61300 |
| K-4,5,7 | (2) #6-350 kcmil | 9/16" | 5/16" Allen | 2-7/8 | 1-57/64 | 1-1/4 | No | H56425 |
| K-4,5,7 | (2) #4-500 kcmil | 9/16" | 3/8" Allen | 2-13/16 | 2-1/16 | 1-9/16 | No | H56425-M |
| K-4 | (4) #6-350 kcmil | 9/16" | 5/16" Allen | 2-7/8 | 3-15/16 | 1-1/4 | No | H56426 |
| K-4,5,7 | (2) #6-350 kcmil | 9/16" | 5/16" Allen | 4-15/16 | 1-1/8 | 2-1/16 | Yes | H56427 |
| K-4,5,7 | (2) #2-500 kcmil | 9/16" | 3/8" Allen | 4-1/4 | 1-1/8 | 1-13/16 | Yes | H56427-M |
| K-5,7 | #3/0-800 kcmil | 9/16" | 1/2" Allen | 3-1/4 | 1-5/16 | 1-13/16 | Yes | H56476 |
| K-4,5,7 | #3/0-800 kcmil | 9/16" | 1/2" Allen | 3-1/4 | 1-5/16 | 1-13/16 | Yes | H56477 |
| K-5,7 | (2) #4-500 kcmil | 9/16" | 3/8" Allen | 2-13/16 | 2-5/32 | 1-9/16 | No | H56490 |
| K-5,7 | (2) #4-350 kcmil | 9/16" | 5/16" Allen | 2-7/8 | 1-59/64 | 1-1/4 | Yes | H56732 |
| K-5,7 | (2) #4-350 kcmil | 9/16" | 5/16" Allen | 2-7/8 | 1-59/64 | 1-1/4 | No | H56732-1 |
| K-5,7 | (2) #4-500 kcmil | 9/16" | 3/8" Allen | 2-13/16 | 2-5/32 | 1-13/16 | Yes | H56732-M |
| K-4,5,7 | #3/0-800 kcmil | 9/16" | 1/2" Allen | 4-3/16 | 1-3/4 | 2-3/8 | Yes | H56733 |
| K-4,5,7 (Grd.) | #6-250 kcmil | 9/16" | 5/16" Allen | 2-9/16 | 1-9/32 | 1-3/16 | No | H56734 |
| K-4,5,7 | #3/0-800 kcmil | 9/16" | 1/2" Allen | 3-15/16 | 1-3/4 | 1-13/16 | Yes | H58852 |
| K-4,5,7 | (2) #6-350 kcmil | 9/16" | 5/16" Allen | 3-15/16 | 1-1/8 | 1-1/2 | Yes | H58853 |
| K-4,5,7 | (3) #6-250 kcmil | 9/16" | 5/16" Allen | 2-7/8 | 2-31/64 | 1-7/16 | Yes | H68752-1 |
| K-4 extender | 1/2-20 x 1-7/8" Stud | 9/16" | None | 4-1/4 | 1-1/4 | 2-3/8 | Yes | H59299-1 |

Lug Extender

| Device type | Stud opening | Stud size | Dimensions (inches) | | | Catalog number |
|-------------|--------------|-----------------|---------------------|-------|-------|----------------|
| | | | W | H | D | |
| K-4 | 9/16" | 1/2-20 x 1-7/8" | 4-1/4 | 1-1/4 | 2-3/8 | H59299-1** |

* Dimensions do not include height of pressure screw with conductor installed.

** Includes nut and washer assembly and washer.



Accessories



Removable hub kits

| | Conduit Size (inches) | Catalog number |
|---|---------------------------|----------------|
|  <p>Removable hub</p> <p>Cover plate</p> | RX type hubs small | |
| | 1 | H38596-2 |
| | 1-1/4 | H38597-2 |
| | 1-1/2 | H38598-2 |
| | 2 | H38599-2 |
| | 2-1/2 | H38600-2 |
| | Cover plate - steel | H38595-1 |
| | Cover plate - aluminum | H38595-2 |
| | HD Type Hubs Large | |
| | 3 | H56856-2 |
| 3-1/2 | H56857-2 | |
| 4 | H56858-2 | |
| Cover plate - steel | H56933 | |
| Cover plate - aluminum | H56933-1 | |

Accessories

| | Description | Catalog number |
|---|---|----------------|
|  | Insulated 5th terminal kit - Type AS, AT only | H659-0120 |
| | Grounded 5th terminal kit - Type AS, AT only | H659-0121 |
|  | HQ 5th terminal kit - 9:00 w/o wire | H35815-2 |
| | HQ 5th terminal kit - 9:00 w/ wire | H35815-3 |
| | HQ 5th terminal kit - 9:00 w/ 9" lead | H35815-5* |
| | *For use with side wired devices only. | |
|  | Large to small adaptor - steel HD to RX | H9747-1113 |
| | Large to small adaptor - aluminum HD to RX | H9747-1112 |
|  | Black plastic meter opening cover | H39968 |
| | Clear plastic meter opening cover (with plug-in feet) | H659-0162 |

Sealing rings

| | Description | Catalog number |
|--|----------------------------|----------------|
|  | Stainless Steel Snap Type | H54602 |
|  | Stainless Steel Screw Type | H9738-8002 |

Accessories

| | Description | Catalog number |
|--|---|----------------|
|  | HQ isolated neutral kit (for 200A only, not for use with 320A) *Includes neutral and isolation block | H64685-1* |
|  | Neutral isolation kit for HQ (for 200A only, not for use with 320A) *Isolates existing neutral | H64690-1* |
|  | Insulated Jumper | H36479 |
|  | Add-on grounding lug for HQ/HQU | H55303 |
|  | K-7 Rotary Bypass - 600 Amp rated | H69623 |
|  | K-7 Rake Type Bypass - 600 Amp rated, temp use only | H58888 |
|  | K-4 Rake Type Bypass - 600 Amp rated, temp use only | H56495 |

Terms of Sale, Meter Mounting Device Applications

Terms of sale

Transportation Charges: Prices listed are F.O.B. factory with freight prepaid and allowed on all shipments of orders of \$1,000 net or more for single shipments to one location.

Minimum Billing: \$400 net plus transportation charges.

Cancellation: Orders accepted by the factory can be cancelled only with the factory's consent and upon payment to the seller of reasonable charges incurred by the seller which will indemnify the seller against loss.

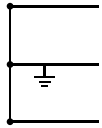
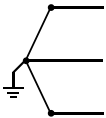
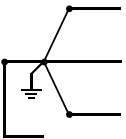
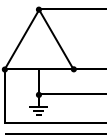
Returns: Goods may not be returned to Talon without written authorization from the factory. A minimum 20% restocking charge will be applicable on all returned goods. Credit will be given only for current production items in unopened cartons. All transportation charges paid by Talon will be deducted from such credit.

Terms: Standard/Stock Products:

2% 10th net 25th for invoices dated the 1st through the 15th of the month.

2% 25th net 10th for invoices dated the 16th through the 31st of the month.

Meter Mounting Device Applications

| Electrical service | Service type | Meter form | Socket type | Standard socket Catalog number |
|--|---------------------------|------------|--------------------|--------------------------------|
| 1-phase  | Self-contained, 3 wire | 2S | 4 jaw 100A | AT-1 |
| | | | 4 jaw 200A | AT-3, AT-4, MQ-4, HQ-4 |
| | | 2SE | 4 jaw 320A | HQ-4S, HQ-4D |
| | Self-contained, bolt-in | 2K | K4-400/480A | K-4, K-4UT |
| | Transformer-rated, 2 wire | 3S! | 5 jaw 20A | HQ-6T, HQ-6TS, PTS-6 |
| | Transformer-rated, 3 wire | 4S! | 6 jaw 20A | HQ-6T, HQ-6TS |
| 3-phase, 3 wire or network  | Self-contained | 12S | 5 jaw 100A | MQ-5, HQ-5 |
| | | 12S | 5 jaw 200A | MQ-5, HQ-5 |
| | | 12SE | 5 jaw 320A | HQ-5SWT, HQ-5D |
| | Self contained bolt-in | 12K | K-5 480/600A | K-5 |
| | Transformer-rated | 5S | 8 jaw 20A | HQ-8T, HQ-8TS, PTS-8 |
| 3-phase, 4 wire  Wye  or Delta | Self-contained | 14S | 7 jaw 100/200/320A | MQ-7, HW-7 |
| | | 15S | | |
| | | 16S | | |
| | Self-contained, bolt-in | 14K | K-7 480/600A | K-7, K-7T |
| | | 15K | | |
| | | 16K | | |
| | Transformer-rated | 6S | 13 jaw 20A | HQ-13T, HQ-13TS, PTS-13 |
| | | 8S | | |
| | | 9S | | |

Represented by:

New Century Sales, Inc.
5684 West 74th Street
Indianapolis, IN 46278
Phone: (317) 334-9697
Fax: (317) 334-9676

www.newcenturysalesinc.com

Talon Meter Mounting Devices
Siemens Industry, Inc.
5400 Triangle Parkway
Norcross, GA 30092

www.talonmetering.com

Subject to change without prior notice
Order No.: RPSA-LG005-0411
All rights reserved
Printed in USA
© 2012 Siemens Industry, Inc.

The information provided in this brochure contains merely general descriptions or characteristics of performance which in case of actual use do not always apply as described or which may change as a result of further development of the products. An obligation to provide the respective characteristics shall only exist if expressly agreed in the terms of contract.

All product designations may be trademarks or product names of Siemens AG or supplier companies whose use by third parties for their own purposes could violate the rights of the owners.