

Figure similar

MLFB-Ordering data 1FK2203-2AG10-1MA0

Client order no. :
 Order no. :
 Offer no. :
 Remarks :

Item no. :
 Consignment no. :
 Project :

| Basic motor data | | Mechanical data | |
|-------------------------|---|-------------------------------|----------------------|
| Motor type | Permanent-magnet synchronous motor, Natural cooling, IP64 | Design acc. to Code I | IM B5 (IM V1, IM V3) |
| Motor type | Compact | Vibration severity grade | Grade A |
| Static torque | 0.64 Nm | Shaft height | 30 |
| Static current | 1.4 A | Flange size (AB) | 60 mm |
| Maximum torque | 1.85 Nm | Centering ring (N) | 50 mm |
| Maximum current | 4.2 A | Hole circle (M) | 70 mm |
| Maximum speed | 8000 rpm | Screw-on hole (S) | 5.5 mm |
| Rotor moment of inertia | 0.220 kgcm ² | Overall length (LB) | 131 mm |
| Weight | 1.6 kg | Diameter of shaft (D) | 14 mm |
| | | Length of shaft (E) | 30 mm |
| | | Length of flange diagonal (P) | 81 mm |
| | | Shaft extension | Fitted key |

Rated data

SINAMICS S210, 1AC 230V

| | |
|---------------|----------|
| Rated speed | 3000 rpm |
| Rated torque | 0.64 Nm |
| Rated current | 1.4 A |
| Rated power | 0.20 kW |

Encoder system

| | |
|----------------|---|
| Encoder system | Encoder AM22DQC: Absolute encoder 22 bit + 12 bit multiturn |
|----------------|---|

Motor connection

| | |
|-----------------|--------------|
| Connection type | OCC for S210 |
| Connector size | M12 |

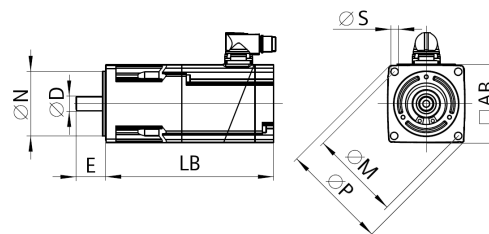
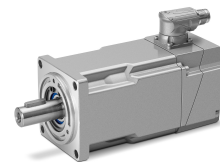


Figure similar



MLFB-Ordering data

1FK2203-2AG10-1MA0

Figure similar

Holding brake

Holding torque 1.30 Nm

Opening time 40 ms

Closing time 10 ms

Maximum single switching energy ¹⁾ 62.0 J

Service life, operating energy 17500 J

Holding current 0.15 A

Break-induced current for 500 ms ²⁾ 0.8 A

¹⁾ Up to three consecutive emergency stops and up to 25% of all emergency stops as a W_{max} high energy stop possible.

²⁾ Typical value for 20°C ambient temperature. At -15°C the break-induced currents can be increased by up to 30%.