



Figure similar

MLFB-Ordering data

1FK7033-4CK71-1BA1

Client order no. :

Order no. :

Offer no. :

Remarks :

Item no. :

Consignment no. :

Project :

Engineering data

Rated speed (100 K)	6000 rpm
Number of poles	6
Rated torque (100 K)	0.9 Nm
Rated current	1.6 A
Static torque (60 K)	1.08 Nm
Static torque (100 K)	1.3 Nm
Stall current (60 K)	1.70 A
Stall current (100 K)	2.10 A
Moment of inertia	0.250 kgcm ²
Efficiency	88.0 %

Physical constants

Torque constant	0.62 Nm/A
Voltage constant at 20° C	39.5 V/1000*min ⁻¹
Winding resistance at 20° C	3.51 Ω
Rotating field inductance	22.0 mH
Electrical time constant	6.30 ms
Mechanical time constant	0.68 ms
Thermal time constant	25 min
Shaft torsional stiffness	7300 Nm/rad
Net weight of the motor	3.0 kg

Mechanical data

Motor type	Permanent-magnet synchronous motor
Motor type	High Dynamic
Shaft height	36
Cooling	Natural cooling
Radial runout tolerance	0.035 mm
Concentricity tolerance	0.08 mm
Axial runout tolerance	0.08 mm
Vibration severity grade	Grade A
Connector size	1
Degree of protection	IP65
Design acc. to Code I	IM B5 (IM V1, IM V3)
Temperature monitoring	Pt1000 temperature sensor
Electrical connectors	Connectors for signals and power rotatable
Color of the housing	Standard (Anthracite RAL 7016)
Holding brake	without holding brake
Shaft extension	Feather key
Encoder system	Encoder AS24DQI: absolute encoder single-turn 24 bits

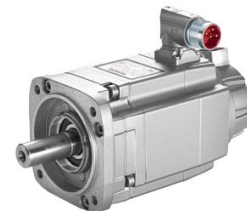


Figure similar

MLFB-Ordering data

1FK7033-4CK71-1BA1

Optimum operating point		Recommended Motor Module	
Optimum speed	6000 rpm	Rated inverter current	3 A
Optimum power	0.6 kW	Maximum inverter current	9 A
Limiting data		Maximum torque	4.30 Nm
Max. permissible speed (mech.)	10000 rpm		
Max. permissible speed (inverter)	10000 rpm		
Maximum torque	4.3 Nm		
Maximum current	7.6 A		