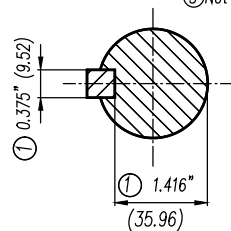


- ① Tolerances According to NEMA Std.
- ② All these dimensions corresponding to assemblies and castings shall have a tolerance as per DIN standard 1686-GTB 19.
- ③ Not According to NEMA Std.



Keyseat detail

CERTIFIED PRINT							
CUSTOMER							
PDR				SOW			
HP	RPM	FRAME	TYPE	VOLTS	PH	RZ	

Tolerance in mm. according to DIN-1686-GTB-19	Quantity	Parts and Measure	Drawing No. Norm No.	Item No.	Material	Weight Lbs.
to 18	± 4.5	 European Projection Dimensions in inches Date: 26/11/15 Name: R. KAISER Type: 1LE2 SD10/100 IEEE 254/256TC W/F FRAME 2...8 Pol. SIEMENS GUADALAJARA FACTORY	Drawing No. Norm No. Item No. Material Weight Lbs.	04 03 02 01	1 0.375" (9.52)	1 1.416" (35.96)
Over 18 to 30	± 4.7					
Over 30 to 50	± 5					
Over 50 to 80	± 5.5					
Over 80 to 120	± 6					
Over 120 to 180	± 6.5					
Over 180 to 250	± 7					
Over 250 to 315	± 7.5					
Over 315 to 400	± 8					
Over 400 to 500	± 8.5					
Over 500 to 630	± 9.5					
Over 630 to 800	± 10					
Remark		Dimension Drawing NEMA NNM Scale W/O 1/1		Ref. 3/SE2230847 3/SE2230846		Replace

E:\010105